

UPPER REACH BOUNDARY
Latitude: 42° 55' 6.40"
Longitude: 121° 19' 4.19"
T 31S, R 12E, S 5, NW 1/4, NE 1/4
Bearing/Distance/Azimuth: From NE corner S 67° 56' 48" W, 661.8m, 247° 56' 48"
LOWER REACH BOUNDARY
Latitude: 42° 49' 45.92"
Longitude: 121° 10' 22.73"
T 32S, R 13E, S 4, SE 1/4, NE 1/4
Bearing/Distance/Azimuth: From NE corner S 1° 38' 39" W, 501.9m, 181° 38' 39"

Upper Boundary



RECEIVED
MAR 01 1999
WATER RESOURCES DEPT.
SALEM, OREGON



Source: USGS 7.5 Minute
Quad: Yamsay Mtn., Hamelton
Butte, Sycan Marsh West.

Vertical Datum: National
Geodetic Vertical Datum of
1929.
Horizontal Datum: 1927 North
American Datum.

KLAMATH ADJUDICATION
CLAIM # **665** PAGE # **07**

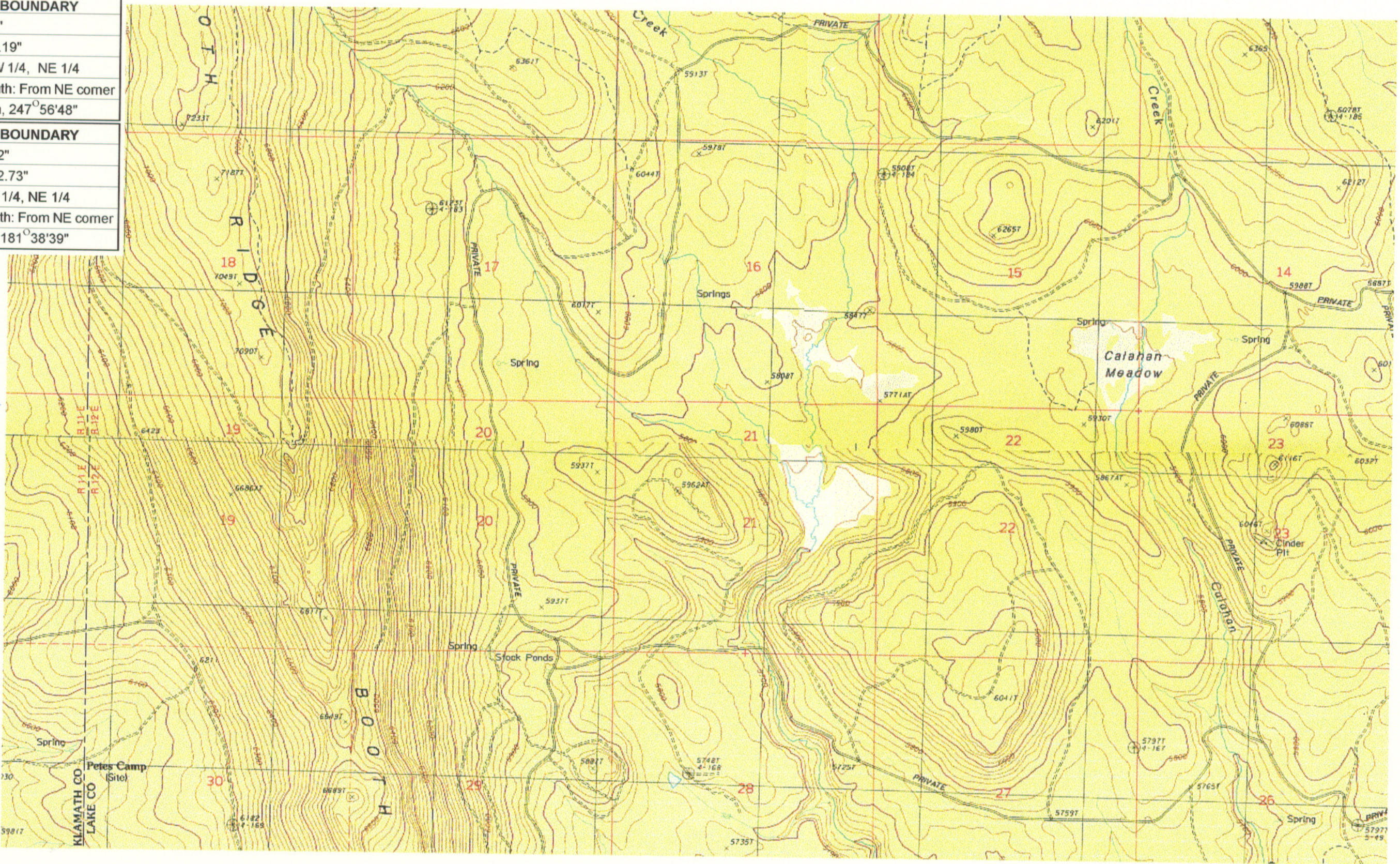
Reach: Long Creek.
Plate 1 of 4.

Klamath Basin Water Rights Claim Map
Department of the Interior Bureau of Indian Affairs
Reach Name: **Sycan River #8**
Scale: 1:24,000

UPPER REACH BOUNDARY
Latitude: 42° 55' 6.40"
Longitude: 121° 19' 4.19"
T 31S, R 12E, S 5, NW 1/4, NE 1/4
Bearing/Distance/Azimuth: From NE corner S 67° 56' 48" W, 661.8m, 247° 56' 48"
LOWER REACH BOUNDARY
Latitude: 42° 49' 45.92"
Longitude: 121° 10' 22.73"
T 32S, R 13E, S 4, SE 1/4, NE 1/4
Bearing/Distance/Azimuth: From NE corner S 1° 38' 39" W, 501.9m, 181° 38' 39"

RECEIVED
MAR 01 1999

WATER RESOURCES DEPT.
SALEM, OREGON



Source: USGS 7.5 Minute
Quad: Yamsay Mtn., Hamelton
Butte, Sycan Marsh West.

Vertical Datum: National
Geodetic Vertical Datum of
1929.

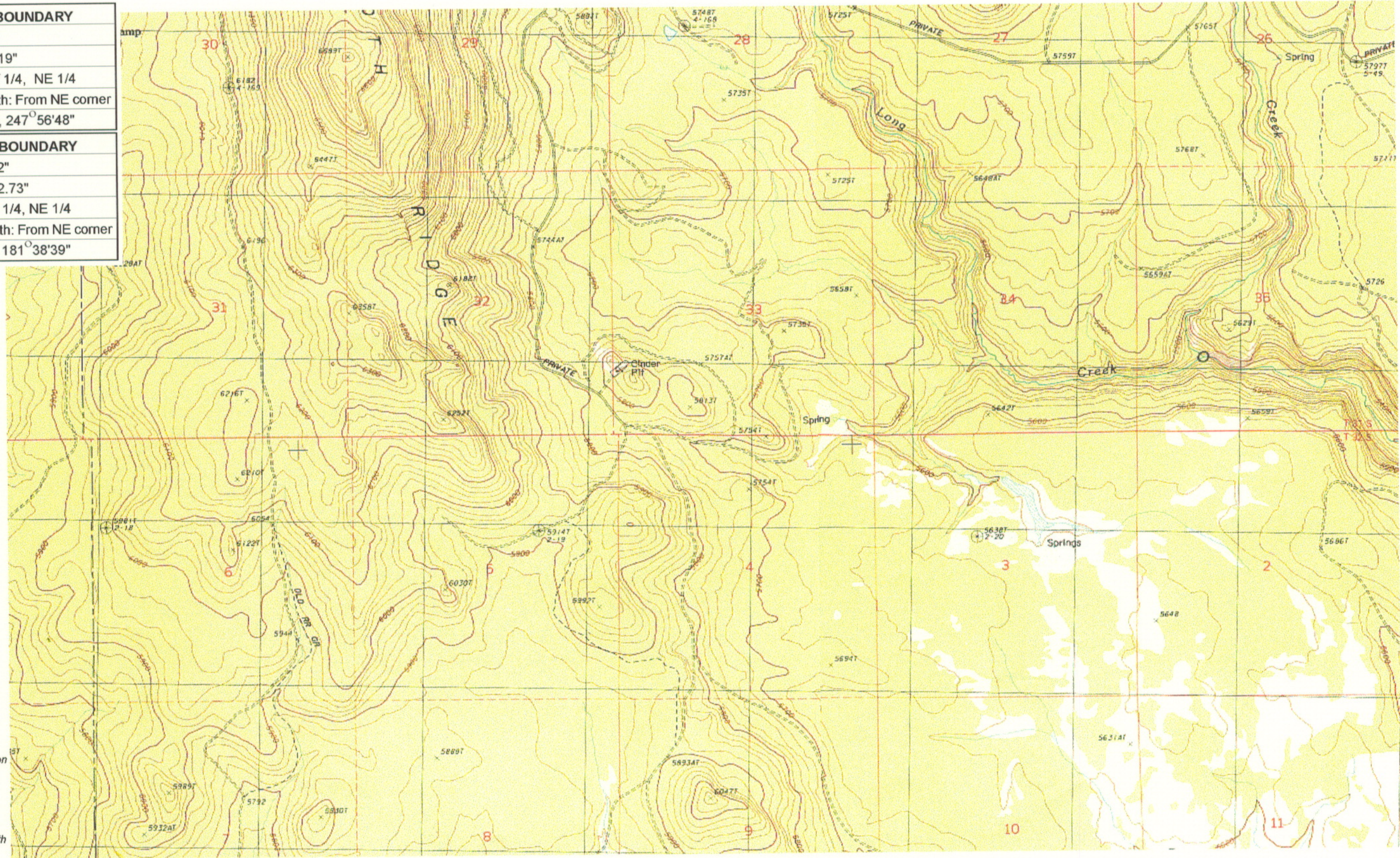
Horizontal Datum: 1927 North
American Datum.

KLAMATH ADJUDICATION
CLAIM #665 PAGE # 08

Reach: Long Creek.
Plate 2 of 4.

Klamath Basin Water Rights Claim Map
Department of the Interior Bureau of Indian Affairs
Reach Name: **Sycan River #8**
Scale: 1:24,000

UPPER REACH BOUNDARY
Latitude: 42° 55' 6.40"
Longitude: 121° 19' 4.19"
T 31S, R 12E, S 5, NW 1/4, NE 1/4
Bearing/Distance/Azimuth: From NE corner S 67°56'48" W, 661.8m, 247°56'48"
LOWER REACH BOUNDARY
Latitude: 42° 49' 45.92"
Longitude: 121° 10' 22.73"
T 32S, R 13E, S 4, SE 1/4, NE 1/4
Bearing/Distance/Azimuth: From NE corner S 1°38'39" W, 501.9m, 181°38'39"



RECEIVED
 MAR 01 1999
 WATER RESOURCES DEPT.
 SALEM, OREGON



Source: USGS 7.5 Minute
 Quad: Yamsay Mtn., Hamelton
 Butte, Sycan Marsh West.

Vertical Datum: National
 Geodetic Vertical Datum of
 1929.

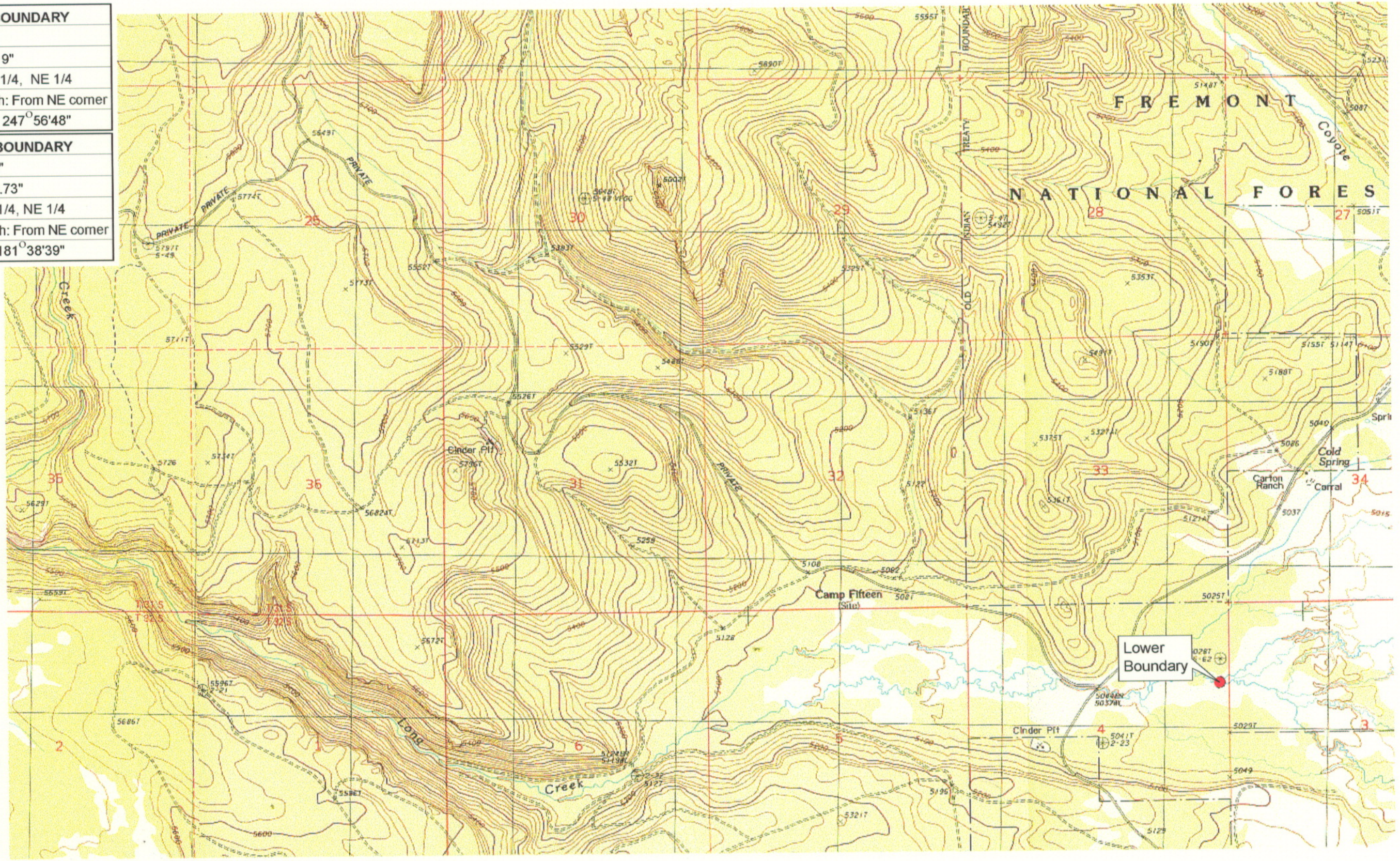
Horizontal Datum: 1927 North
 American Datum.

KLAMATH ADJUDICATION
CLAIM # 665 PAGE # 09

Reach: Long Creek.
 Plate 3 of 4.

Klamath Basin Water Rights Claim Map
 Department of the Interior Bureau of Indian Affairs
 Reach Name: **Sycan River #8**
 Scale: 1:24,000

UPPER REACH BOUNDARY	
Latitude:	42° 55' 6.40"
Longitude:	121° 19' 4.19"
T 31S, R 12E, S 5, NW 1/4, NE 1/4	
Bearing/Distance/Azimuth: From NE corner S 67° 56' 48" W, 661.8m, 247° 56' 48"	
LOWER REACH BOUNDARY	
Latitude:	42° 49' 45.92"
Longitude:	121° 10' 22.73"
T 32S, R 13E, S 4, SE 1/4, NE 1/4	
Bearing/Distance/Azimuth: From NE corner S 1° 38' 39" W, 501.9m, 181° 38' 39"	



RECEIVED

MAR 01 1999

WATER RESOURCES DEPT.
SALEM, OREGON



Source: USGS 7.5 Minute
Quad: Yamsay Mtn., Hamelton
Butte, Sycan Marsh West.

Vertical Datum: National
Geodetic Vertical Datum of
1929.
Horizontal Datum: 1927 North
American Datum.

KLAMATH ADJUDICATION

CLAIM # **665** PAGE # **10**

Reach: Long Creek.
Plate 4 of 4.

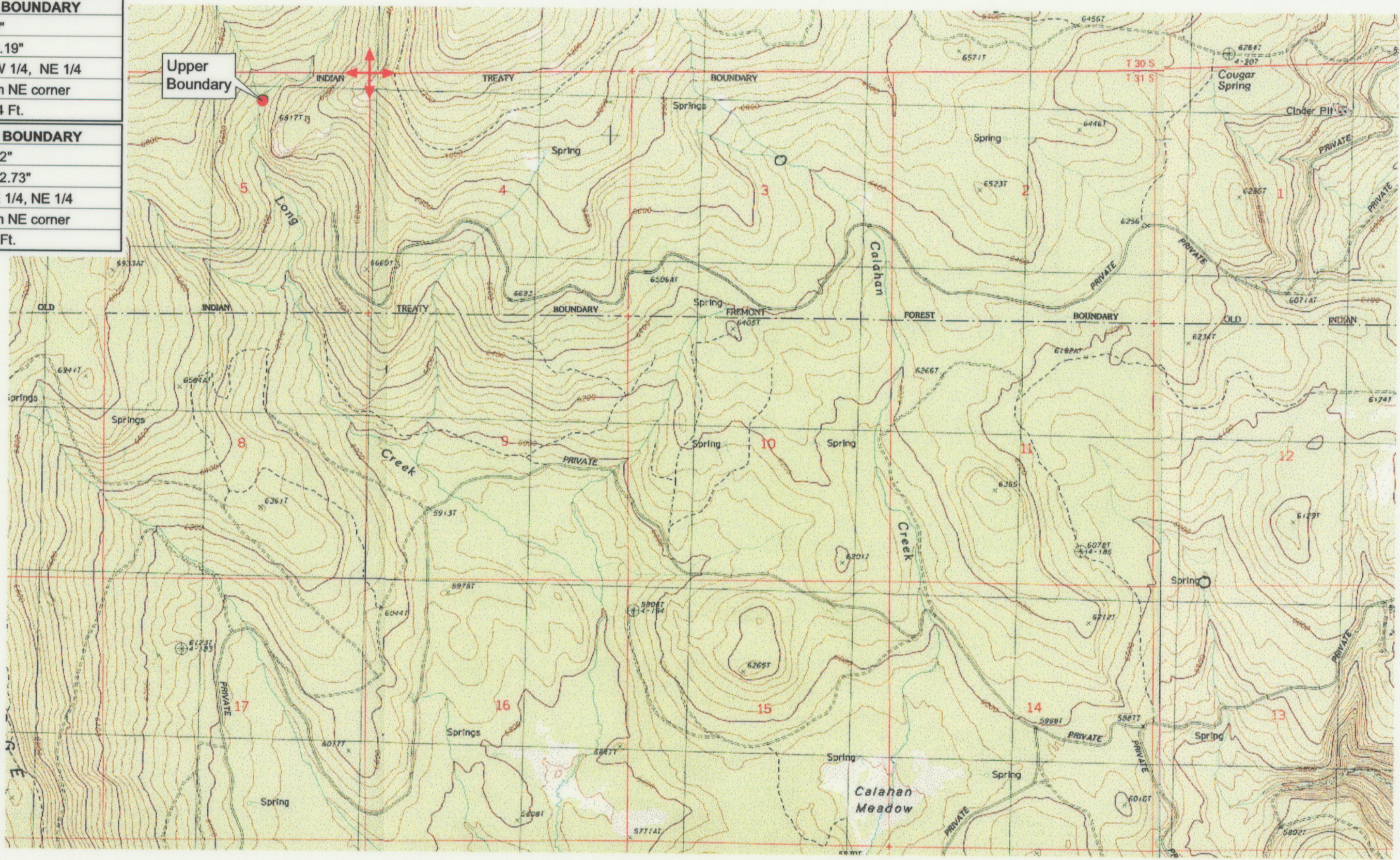
Klamath Basin Water Rights Claim Map

Department of the Interior Bureau of Indian Affairs

Reach Name: **Sycan River #8**

Scale: 1:24,000

UPPER REACH BOUNDARY	
Latitude:	42° 55' 6.40"
Longitude:	121° 19' 4.19"
T 31S, R 12E, S 5, NW 1/4, NE 1/4	
Bearing/Distance: From NE corner S 67° 56' 48" W, 2,171.4 Ft.	
LOWER REACH BOUNDARY	
Latitude:	42° 49' 45.92"
Longitude:	121° 10' 22.73"
T 32S, R 13E, S 4, SE 1/4, NE 1/4	
Bearing/Distance: From NE corner S 1° 38' 39" W, 1,646.9 Ft.	



Source: USGS 7.5 Minute Quad: Yamsay Mtn., Hamelton Butte, Sycan Marsh West.
Vertical Datum: National Geodetic Vertical Datum of 1929.
Horizontal Datum: 1927 North American Datum.

KLAMATH ADJUDICATION
665
CLAIM # **665** PAGE # **021**

Reach: Long Creek.
Plate 1 of 4.

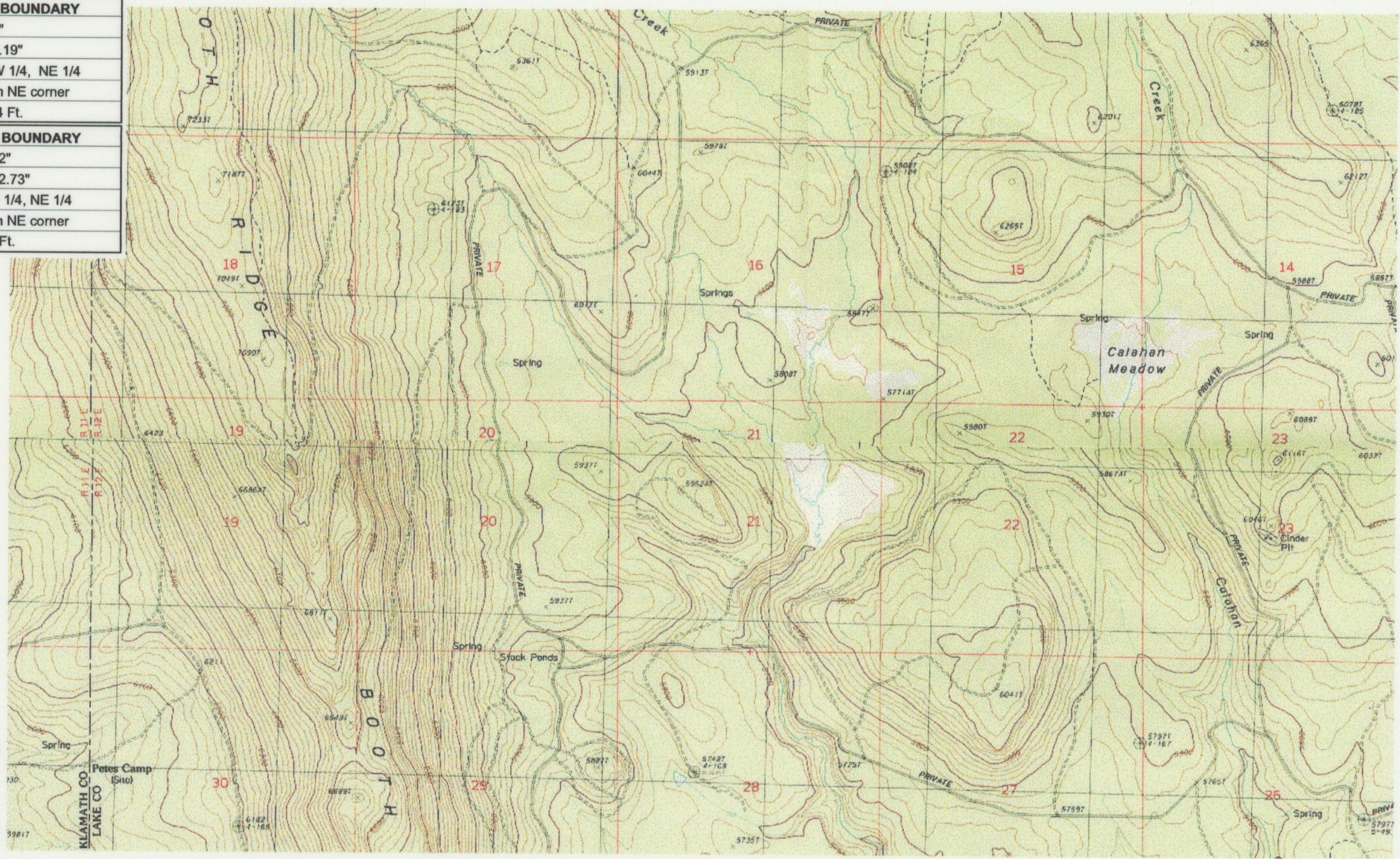
RECEIVED

OCT 01 1999

WATER RESOURCES DEPT.
SALEM, OREGON

Klamath Basin Water Rights Claim #665
Department of the Interior Bureau of Indian Affairs
Reach Name: **Sycan River #8 (SY 8)**
Scale: 1:24,000 (Amended)

UPPER REACH BOUNDARY
Latitude: 42° 55' 6.40"
Longitude: 121° 19' 4.19"
T 31S, R 12E, S 5, NW 1/4, NE 1/4
Bearing/Distance: From NE corner
S 67° 56' 48" W, 2,171.4 Ft.
LOWER REACH BOUNDARY
Latitude: 42° 49' 45.92"
Longitude: 121° 10' 22.73"
T 32S, R 13E, S 4, SE 1/4, NE 1/4
Bearing/Distance: From NE corner
S 1° 38' 39" W, 1,646.9 Ft.



Source: USGS 7.5 Minute Quad: Yamsay Mtn., Hamelton Butte, Sycan Marsh West.

Vertical Datum: National Geodetic Vertical Datum of 1929.

Horizontal Datum: 1927 North American Datum.

KLAMATH ADJUDICATION
CLAIM # 665 PAGE # **022**

Reach: Long Creek.
 Plate 2 of 4.

RECEIVED

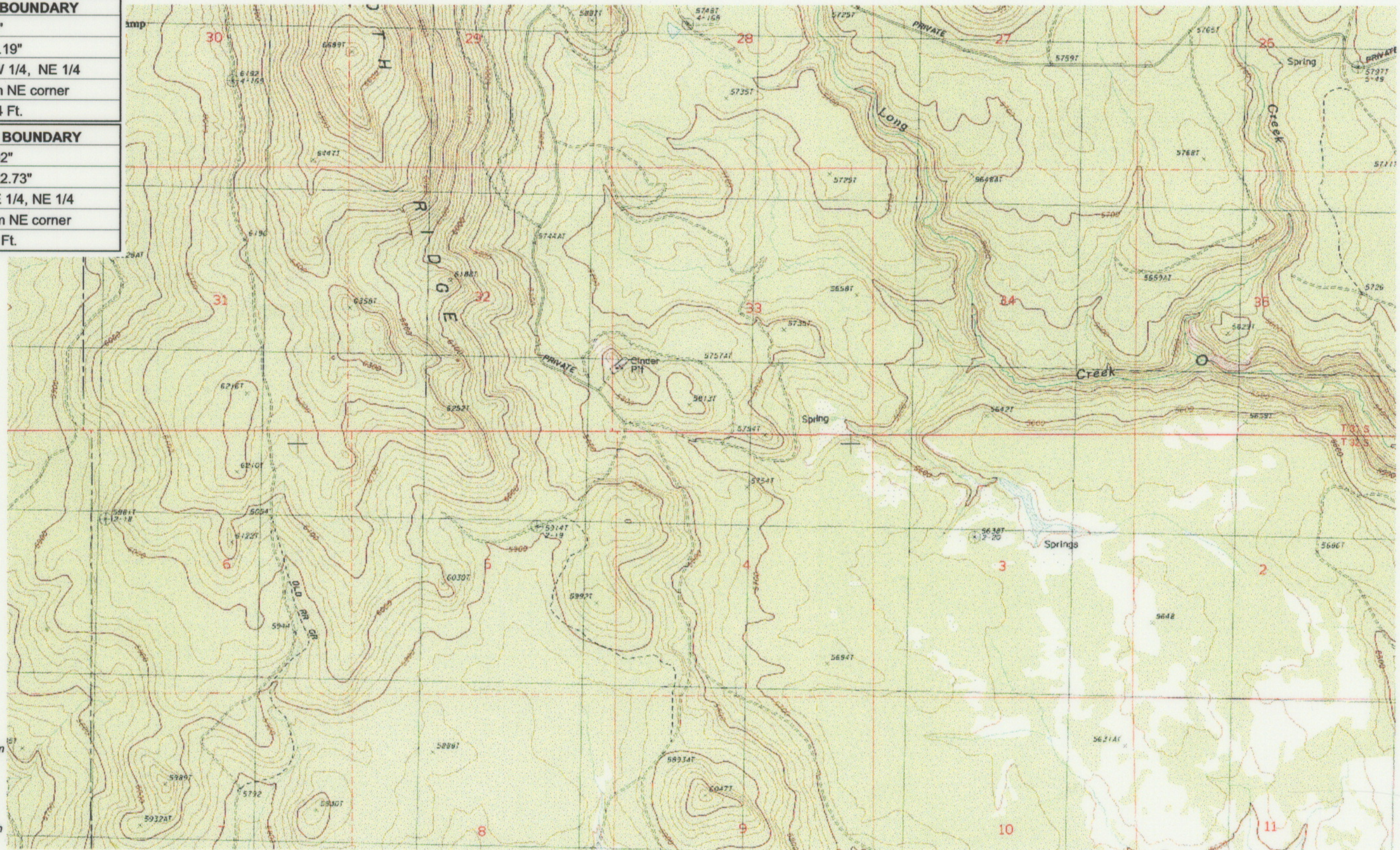
OCT 01 1999

WATER RESOURCES DEPT.
 SALEM, OREGON

Klamath Basin Water Rights Claim #665
 Department of the Interior Bureau of Indian Affairs
 Reach Name: **Sycan River #8 (SY 8)**
 Scale: 1:24,000 (Amended)

\\Lafayette\Graphics\Projects\GIS\BIA\60177.26\Topo\1117gis2.fn8

UPPER REACH BOUNDARY
Latitude: 42° 55' 6.40"
Longitude: 121° 19' 4.19"
T 31S, R 12E, S 5, NW 1/4, NE 1/4
Bearing/Distance: From NE corner S 67° 56' 48" W, 2,171.4 Ft.
LOWER REACH BOUNDARY
Latitude: 42° 49' 45.92"
Longitude: 121° 10' 22.73"
T 32S, R 13E, S 4, SE 1/4, NE 1/4
Bearing/Distance: From NE corner S 1° 38' 39" W, 1,646.9 Ft.



Source: USGS 7.5 Minute Quad: Yamsay Mtn., Hamelton Butte, Sycan Marsh West.

Vertical Datum: National Geodetic Vertical Datum of 1929.
Horizontal Datum: 1927 North American Datum.

KLAMATH ADJUDICATION
665
 CLAIM # PAGE # **023**

Reach: Long Creek.
Plate 3 of 4.

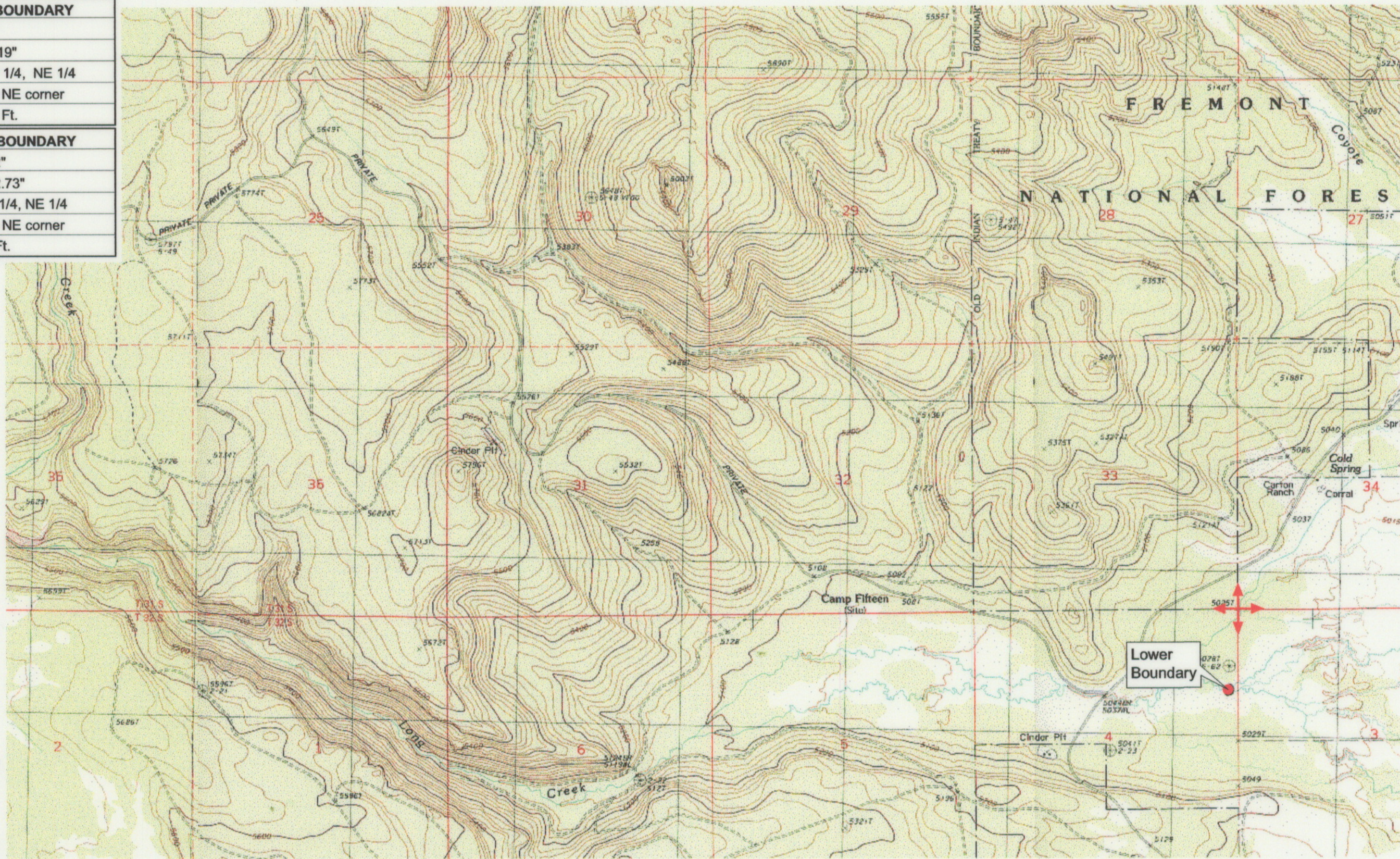
RECEIVED

OCT 01 1999

WATER RESOURCES DEPT.
SALEM, OREGON

Klamath Basin Water Rights Claim #665
 Department of the Interior Bureau of Indian Affairs
 Reach Name: **Sycan River #8 (SY 8)**
 Scale: 1:24,000 (Amended)

UPPER REACH BOUNDARY
Latitude: 42° 55' 6.40"
Longitude: 121° 19' 4.19"
T 31S, R 12E, S 5, NW 1/4, NE 1/4
Bearing/Distance: From NE corner S 67° 56' 48" W, 2,171.4 Ft.
LOWER REACH BOUNDARY
Latitude: 42° 49' 45.92"
Longitude: 121° 10' 22.73"
T 32S, R 13E, S 4, SE 1/4, NE 1/4
Bearing/Distance: From NE corner S 1° 38' 39" W, 1,646.9 Ft.



Source: USGS 7.5 Minute Quad: Yamsay Mtn., Hamelton Butte, Sycan Marsh West.

Vertical Datum: National Geodetic Vertical Datum of 1929.

Horizontal Datum: 1927 North American Datum.

KLAMATH ADJUDICATION
CLAIM # 665 PAGE # 024

Reach: Long Creek.
 Plate 4 of 4.

RECEIVED

OCT 01 1999

WATER RESOURCES DEPT.
 SALEM, OREGON

Klamath Basin Water Rights Claim #665
 Department of the Interior Bureau of Indian Affairs
 Reach Name: **Sycan River #8 (SY 8)**
 Scale: 1:24,000 (Amended)

\\Lafayette\Graphics\Projects\GIS\BIA\60177.26\Topo\1117gis2.fh8