

UPPER REACH BOUNDARY
Latitude: 42° 55' 23.49"
Longitude: 121° 17' 21.41"
T 30S, R 12E, S 34, NW 1/4, SW 1/4
Distance/Bearing/Azimuth: From SW corner N 19° 43' 30" E, 507.8m, 19° 43' 30"
LOWER REACH BOUNDARY
Latitude: 42° 50' 16.80"
Longitude: 121° 15' 55.03"
T 31S, R 12E, S 35, NW 1/4, SW 1/4
Distance/Bearing/Azimuth: From SW corner N 41° 9' 6" E, 608.8m, 41° 9' 6"

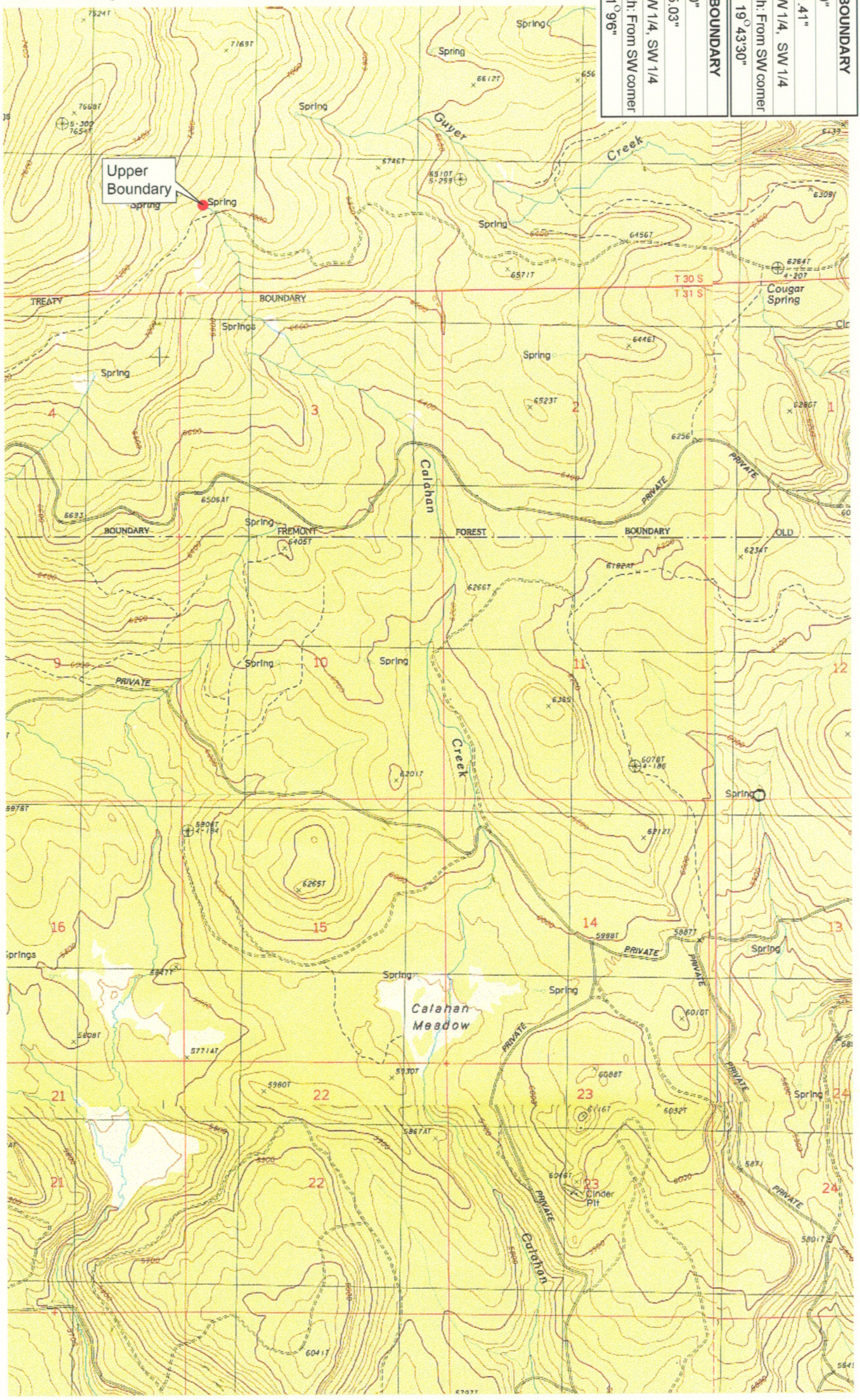
RECEIVED

MAR 01 1999

WATER RESOURCES DEPT.
SALEM, OREGON



Source: USGS 7.5 Minute
Quad: Yamsay Mtn., Hamelton
Butte, Sycan Marsh West,
Parlin Butte.
Vertical Datum: National
Geodetic Vertical Datum of
1929
Horizontal Datum: 1927 North
American Datum.



KLAMATH ADJUDICATION
CLAIM # **666** PAGE # **05**

Reach: Calahan Creek
Plate 1 of 2.

Klamath Basin Water Rights Claim Map
Department of the Interior Bureau of Indian Affairs
Reach Name: Sycan River #9
Scale: 1:24,000

UPPER REACH BOUNDARY
Latitude: 42° 55' 23.49"
Longitude: 121° 17' 21.41"
T 30S, R 12E, S 34, NW 1/4, SW 1/4
Distance/Bearing/Azimuth: From SW corner N 19° 43' 30" E, 507.8m, 19° 43' 30"
LOWER REACH BOUNDARY
Latitude: 42° 50' 16.80"
Longitude: 121° 15' 55.03"
T 31S, R 12E, S 35, NW 1/4, SW 1/4
Distance/Bearing/Azimuth: From SW corner N 41° 9' 6" E, 608.8m, 41° 9' 6"

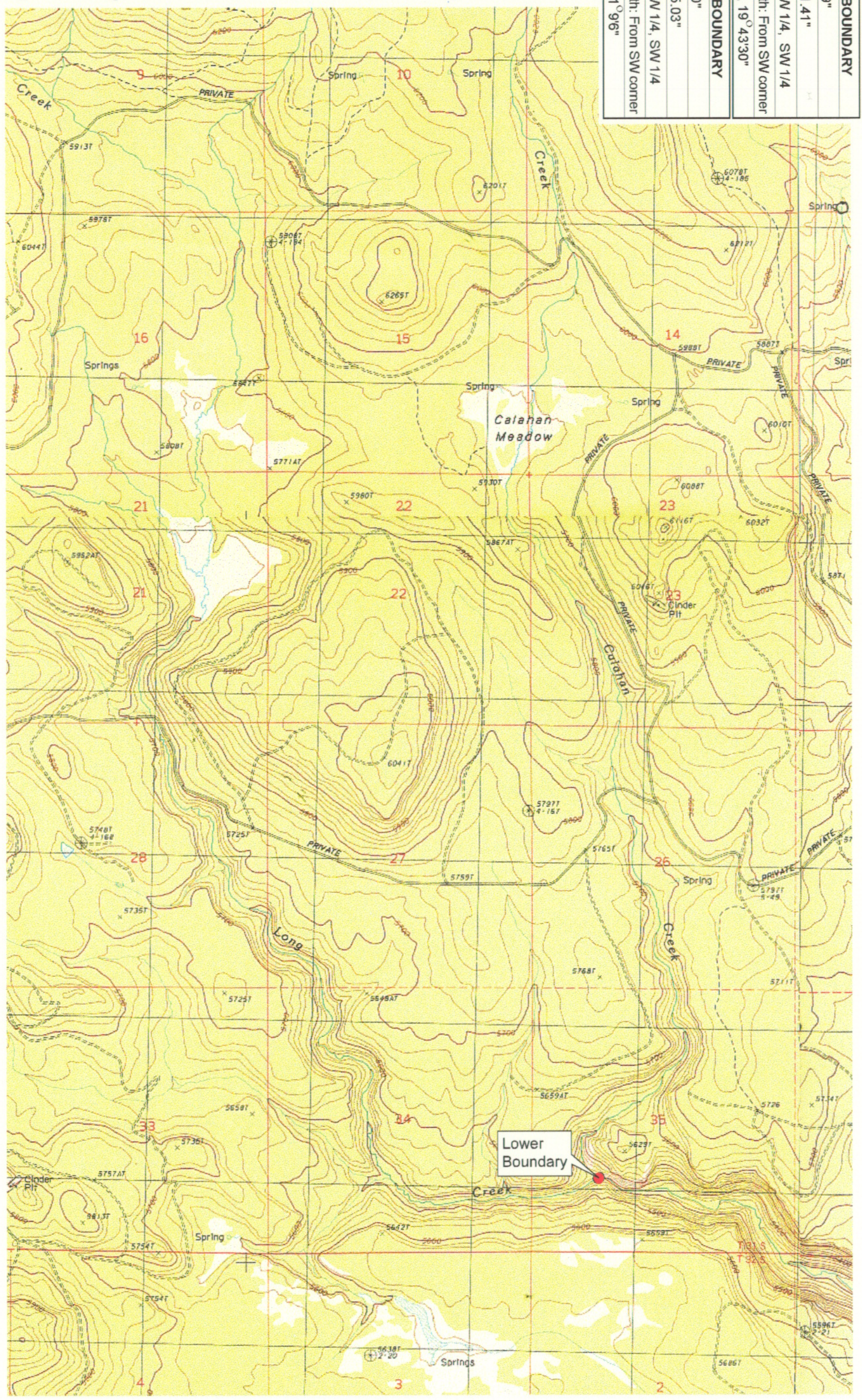
RECEIVED

MAR 01 1999

WATER RESOURCES DEPT
SALEM, OREGON



Source: USGS 7.5 Minute
Quad: Yamsay Mtn., Hamelton
Butte, Sycan Marsh West,
Pardin Butte.
Vertical Datum: National
Geodetic Vertical Datum of
1929.
Horizontal Datum: 1927 North
American Datum.



KLAMATH ADJUDICATION
CLAIM # **666** PAGE # **06**

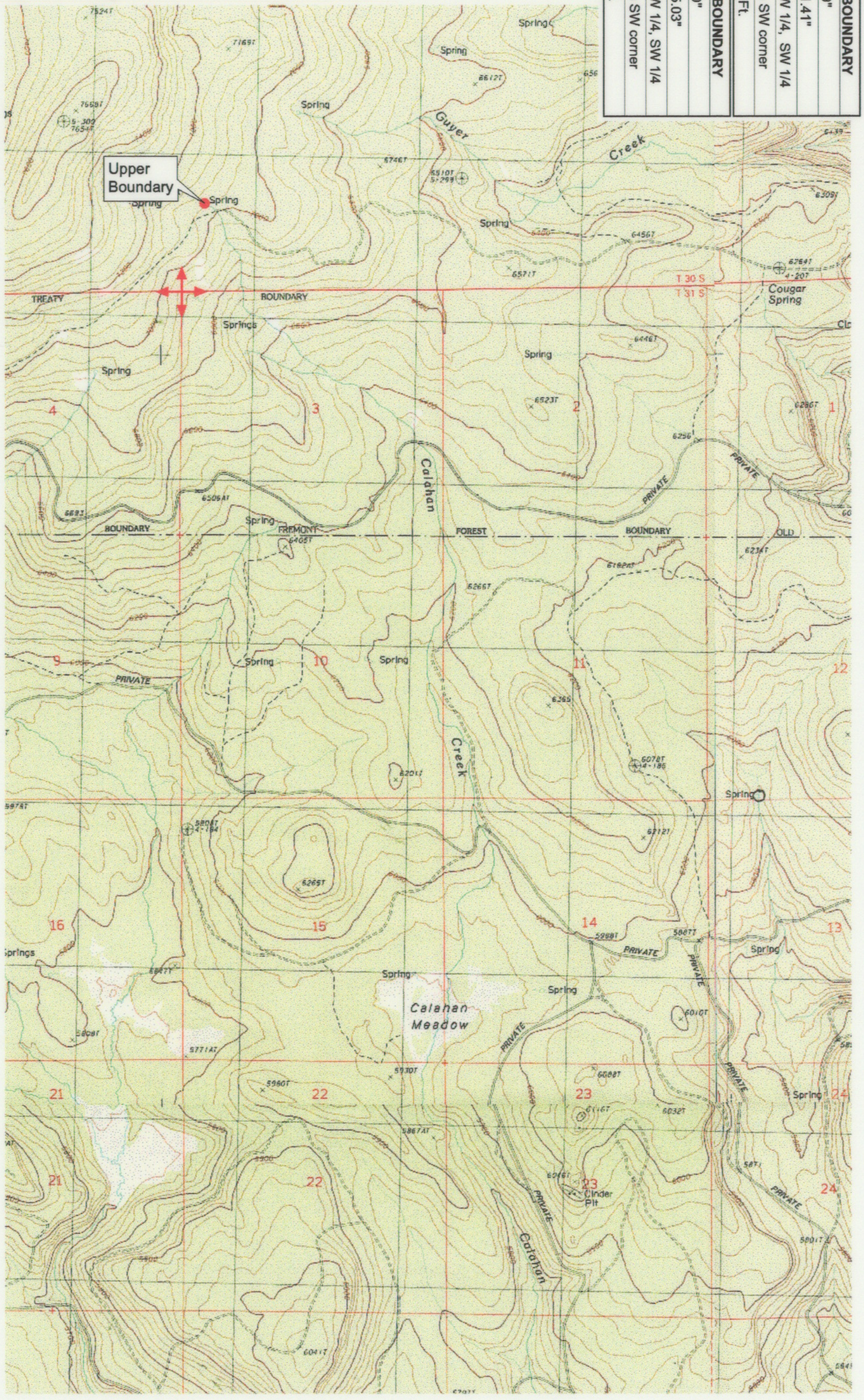
Reach: Calahan Creek.
Plate 2 of 2.

Klamath Basin Water Rights Claim Map
Department of the Interior
Bureau of Indian Affairs
Reach Name: Sycan River #9
Scale: 1:24,000

UPPER REACH BOUNDARY	
Latitude:	42° 55' 23.49"
Longitude:	121° 17' 21.41"
T 30S, R 12E, S 34, NW 1/4, SW 1/4	
Bearing/Distance:	From SW corner N 19° 43' 30" E, 1,666.2 Ft.
LOWER REACH BOUNDARY	
Latitude:	42° 50' 16.80"
Longitude:	121° 15' 55.03"
T 31S, R 12E, S 35, NW 1/4, SW 1/4	
Bearing/Distance:	From SW corner N 41° 9' 6" E, 1,997.4 Ft.



Source: USGS 7.5 Minute
 Quad: Yamsay Mtn., Hamelton
 Butte, Sycan Marsh West,
 Parlin Butte.
 Vertical Datum: National
 Geodetic Vertical Datum of
 1929.
 Horizontal Datum: 1927 North
 American Datum.



KLAMATH ADJUDICATION
CLAIM # 666 PAGE # **017**

Reach: Calahan Creek.
 Plate 1 of 2.

RECEIVED

OCT 01 1999

WATER RESOURCES DEPT.
 SALEM, OREGON

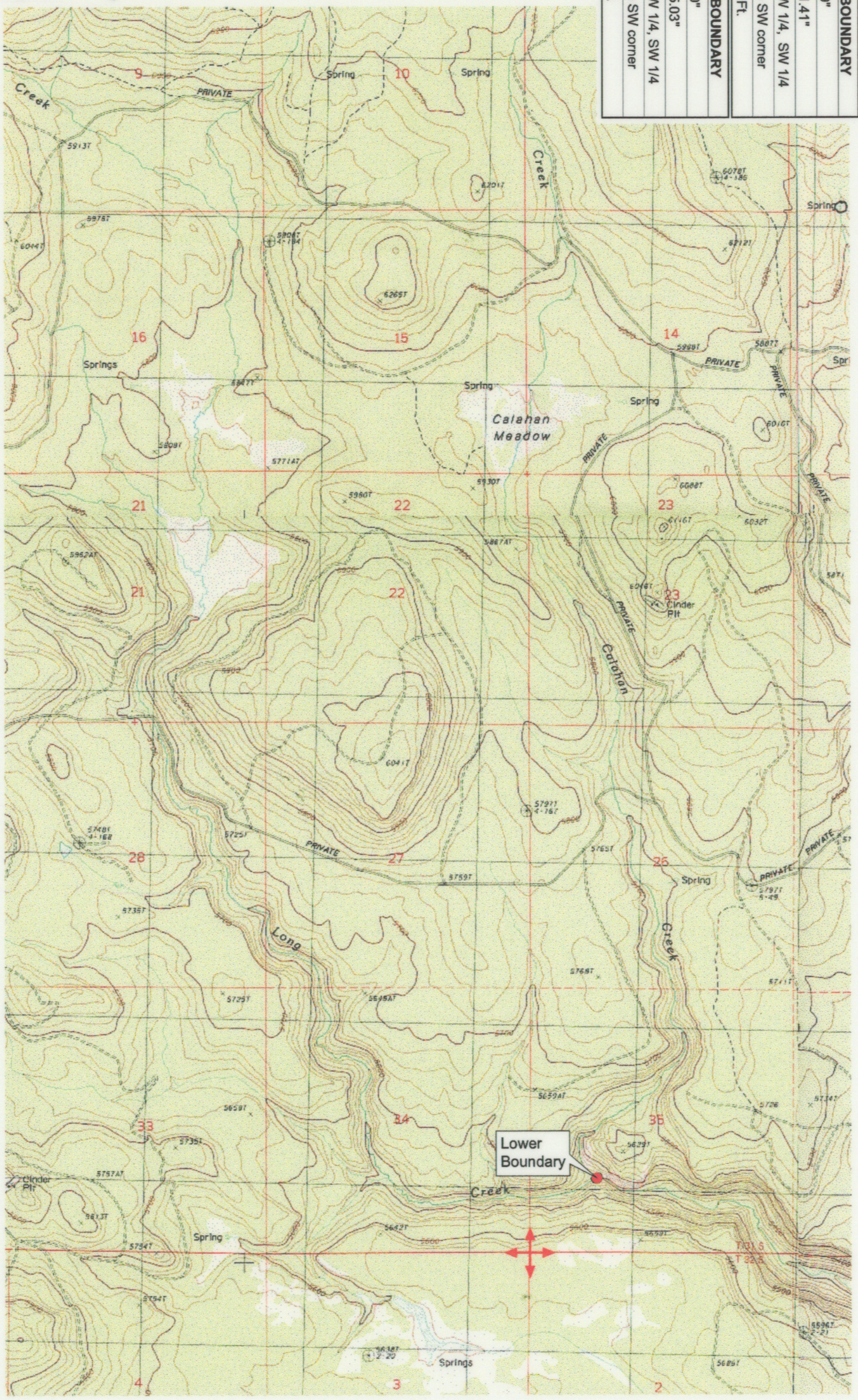
Klamath Basin Water Rights Claim #666
 Department of the Interior Bureau of Indian Affairs
 Reach Name: Sycan River #9 (SY 9)
 Scale: 1:24,000
 (Amended)

\\latyette\Graphics\Projects\GIS\BA\60177_261\Topo\1117gs2.mxd

UPPER REACH BOUNDARY
Latitude: 42° 55' 23.49"
Longitude: 121° 17' 21.41"
T 30S, R 12E, S 34, NW 1/4, SW 1/4
Bearing/Distance: From SW corner N 19° 43' 30" E, 1,666.2 Ft.
LOWER REACH BOUNDARY
Latitude: 42° 50' 16.80"
Longitude: 121° 15' 55.03"
T 31S, R 12E, S 35, NW 1/4, SW 1/4
Bearing/Distance: From SW corner N 41° 09' 6" E, 1,997.4 Ft.



Source: USGS 7.5 Minute
 Quad: Yamsay Mtn., Hamelton
 Butte, Sycan Marsh West,
 Parlin Butte.
 Vertical Datum: National
 Geodetic Vertical Datum of
 1929.
 Horizontal Datum: 1927 North
 American Datum.



KLAMATH ADJUDICATION
 CLAIM # **666** PAGE # **018**

Reach: Calahan Creek.
 Plate 2 of 2.

RECEIVED
 OCT 01 1999

WATER RESOURCES DEPT.
 SALEM, OREGON

Klamath Basin Water Rights Claim #666
 Department of the Interior Bureau of Indian Affairs
 Reach Name: Sycan River #9 (SY 9)
 Scale: 1:24,000
 (Amended)

\\afayvel\Graphics\Projects\GIS\BIA\60177_26\Topo\1117\gs2.th8