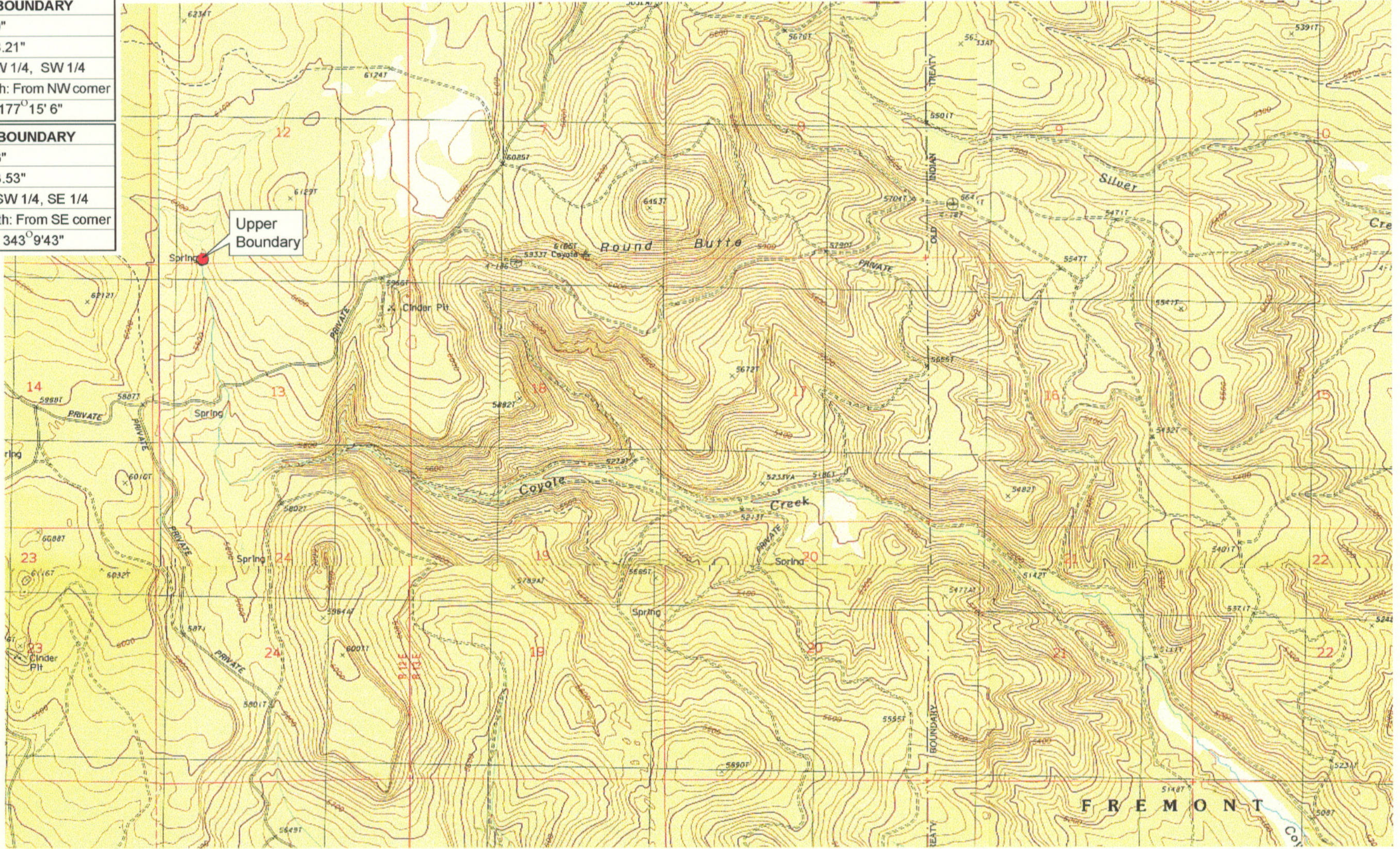


<b>UPPER REACH BOUNDARY</b>
Latitude: 42° 53' 31.59"
Longitude: 121° 14' 48.21"
T 31S, R 12E, S 12, SW 1/4, SW 1/4
Distance/Bearing/Azimuth: From NW corner S 2° 44' 54" W, 326.9m, 177° 15' 6"
<b>LOWER REACH BOUNDARY</b>
Latitude: 42° 50' 59.66"
Longitude: 121° 07' 13.53"
T 31S, R 13E, S 25, SW 1/4, SE 1/4
Distance/Bearing/Azimuth: From SE corner N16° 50' 17" W, 692.2m, 343° 9' 43"



RECEIVED

MAR 01 1999

WATER RESOURCES DEPT.  
SALEM, OREGON



Source: USGS 7.5 Minute  
Quad: Partin Butte, Sycan  
Marsh West, Sycan Marsh East,  
Yamsay Mtn. Hamelton Butte.

Vertical Datum: National  
Geodetic Vertical Datum of  
1929.  
Horizontal Datum: 1927 North  
American Datum.

**KLAMATH ADJUDICATION**  
**CLAIM #667** PAGE # **05**

Reach: Coyote Creek.  
Plate 1 of 2.

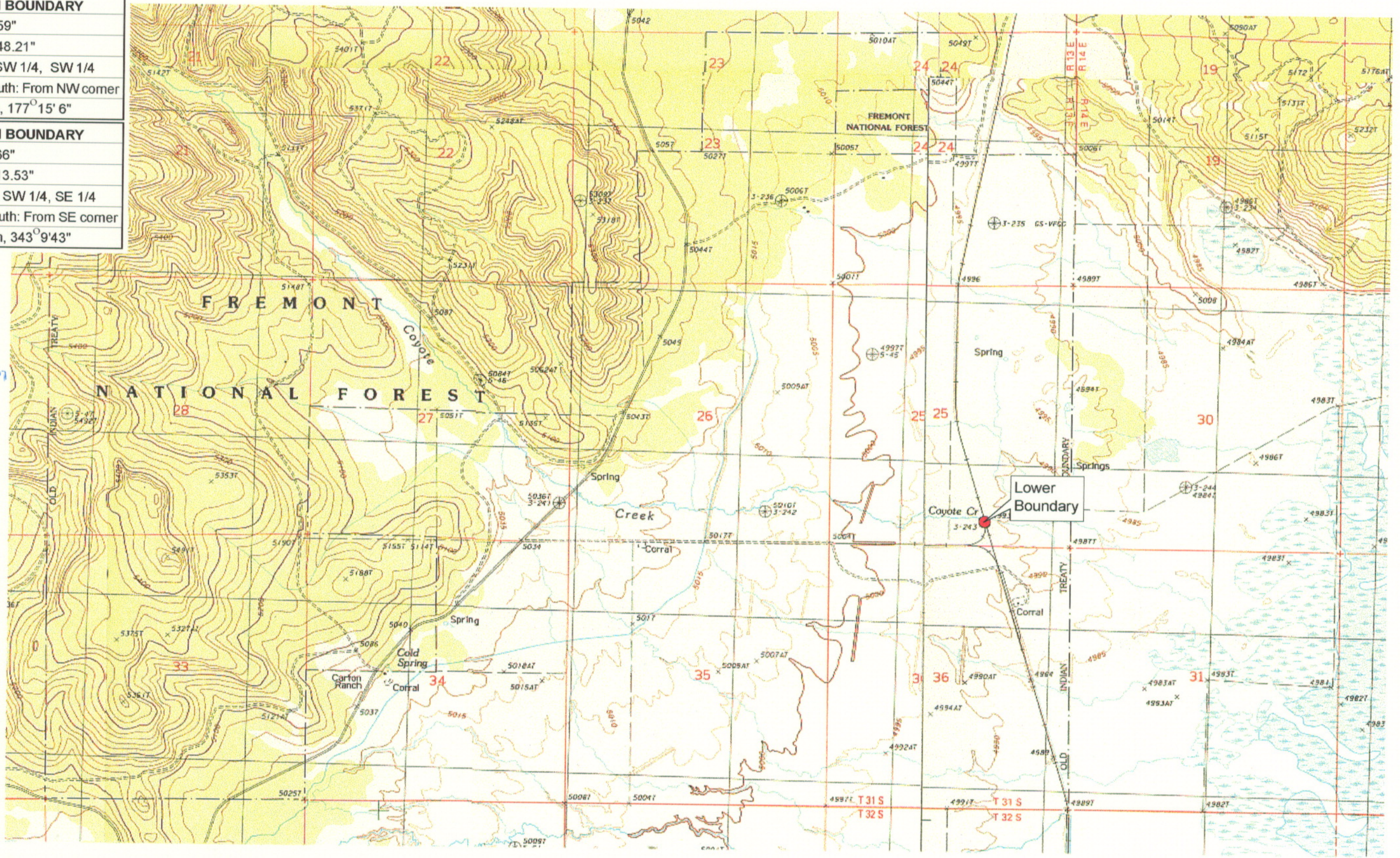
**Klamath Basin Water Rights Claim Map**  
Department of the Interior Bureau of Indian Affairs  
Reach Name: **Sycan River #10**  
Scale: 1:24,000

UPPER REACH BOUNDARY	
Latitude:	42° 53' 31.59"
Longitude:	121° 14' 48.21"
T 31S, R 12E, S 12, SW 1/4, SW 1/4	
Distance/Bearing/Azimuth: From NW corner S 2° 44' 54" W, 326.9m, 177° 15' 6"	
LOWER REACH BOUNDARY	
Latitude:	42° 50' 59.66"
Longitude:	121° 07' 13.53"
T 31S, R 13E, S 25, SW 1/4, SE 1/4	
Distance/Bearing/Azimuth: From SE corner N16° 50' 17" W, 692.2m, 343° 9' 43"	

RECEIVED

MAR 01 1999

WATER RESOURCES DEPT  
SALEM, OREGON



Source: USGS 7.5 Minute  
Quad: Partin Butte, Sycan  
Marsh West, Sycan Marsh East,  
Yamsay Mtn., Hamelton Butte.

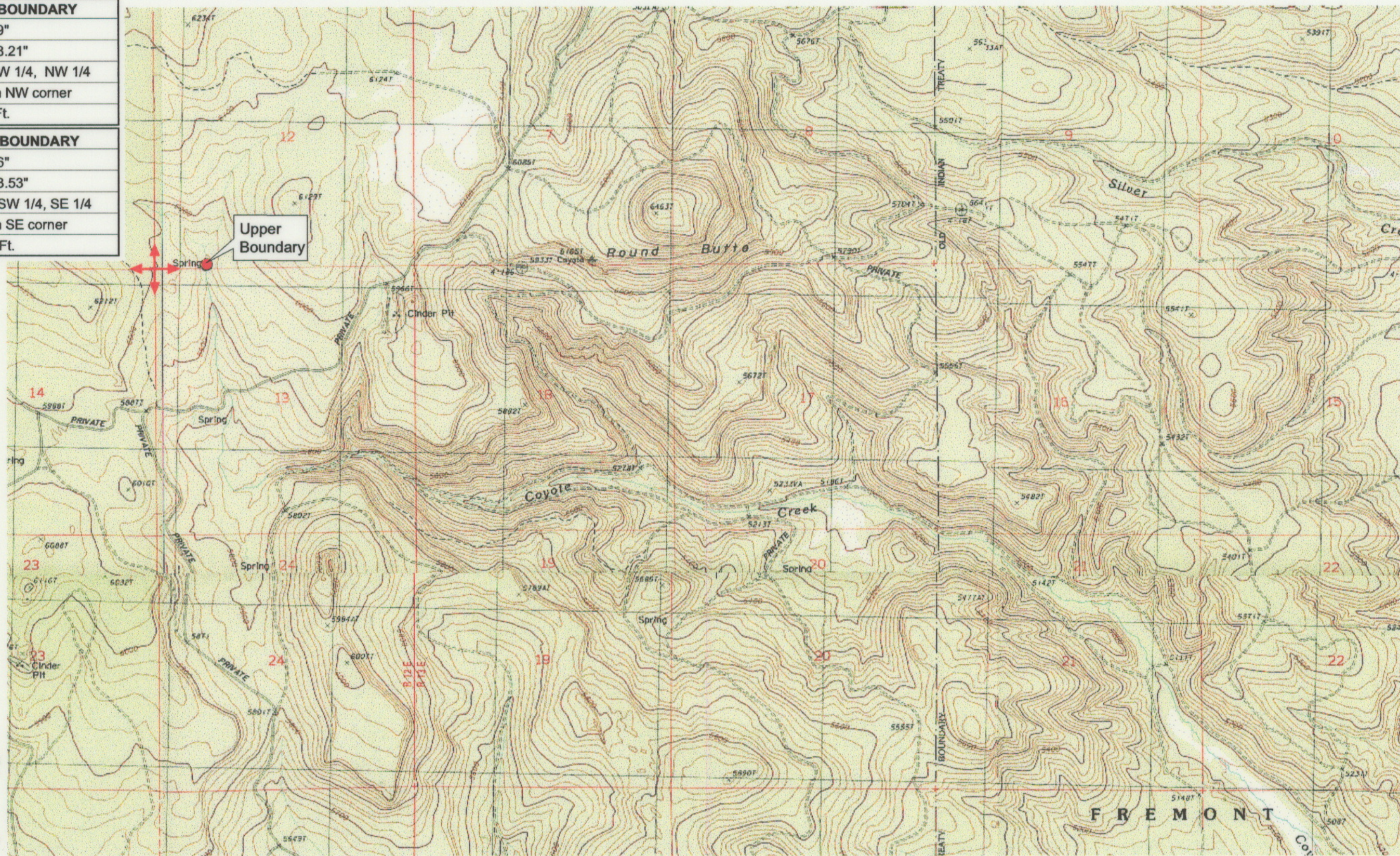
Vertical Datum: National  
Geodetic Vertical Datum of  
1929.  
Horizontal Datum: 1927 North  
American Datum.

**KLAMATH ADJUDICATION**  
CLAIM # **667** PAGE # **06**

Reach: Coyote Creek.  
Plate 2 of 2.

**Klamath Basin Water Rights Claim Map**  
Department of the Interior Bureau of Indian Affairs  
Reach Name: **Sycan River #10**  
Scale: 1:24,000

<b>UPPER REACH BOUNDARY</b>
Latitude: 42° 53' 31.59"
Longitude: 121° 14' 48.21"
T 31S, R 12E, S 13, NW 1/4, NW 1/4
Bearing/Distance: From NW corner S 87° 15' 6" E, 1,072.7 Ft.
<b>LOWER REACH BOUNDARY</b>
Latitude: 42° 50' 59.66"
Longitude: 121° 07' 13.53"
T 31S, R 13E, S 25, SW 1/4, SE 1/4
Bearing/Distance: From SE corner N 73° 9' 43" W, 2,271.0 Ft.



Source: USGS 7.5 Minute  
 Quad: Partin Butte, Sycan  
 Marsh West, Sycan Marsh East,  
 Yamsay Mtn. Hamelton Butte.

Vertical Datum: National  
 Geodetic Vertical Datum of  
 1929.  
 Horizontal Datum: 1927 North  
 American Datum.

**KLAMATH ADJUDICATION**  
**667** PAGE # **019**  
 CLAIM #

Reach: Coyote Creek.  
 Plate 1 of 2.

**RECEIVED**

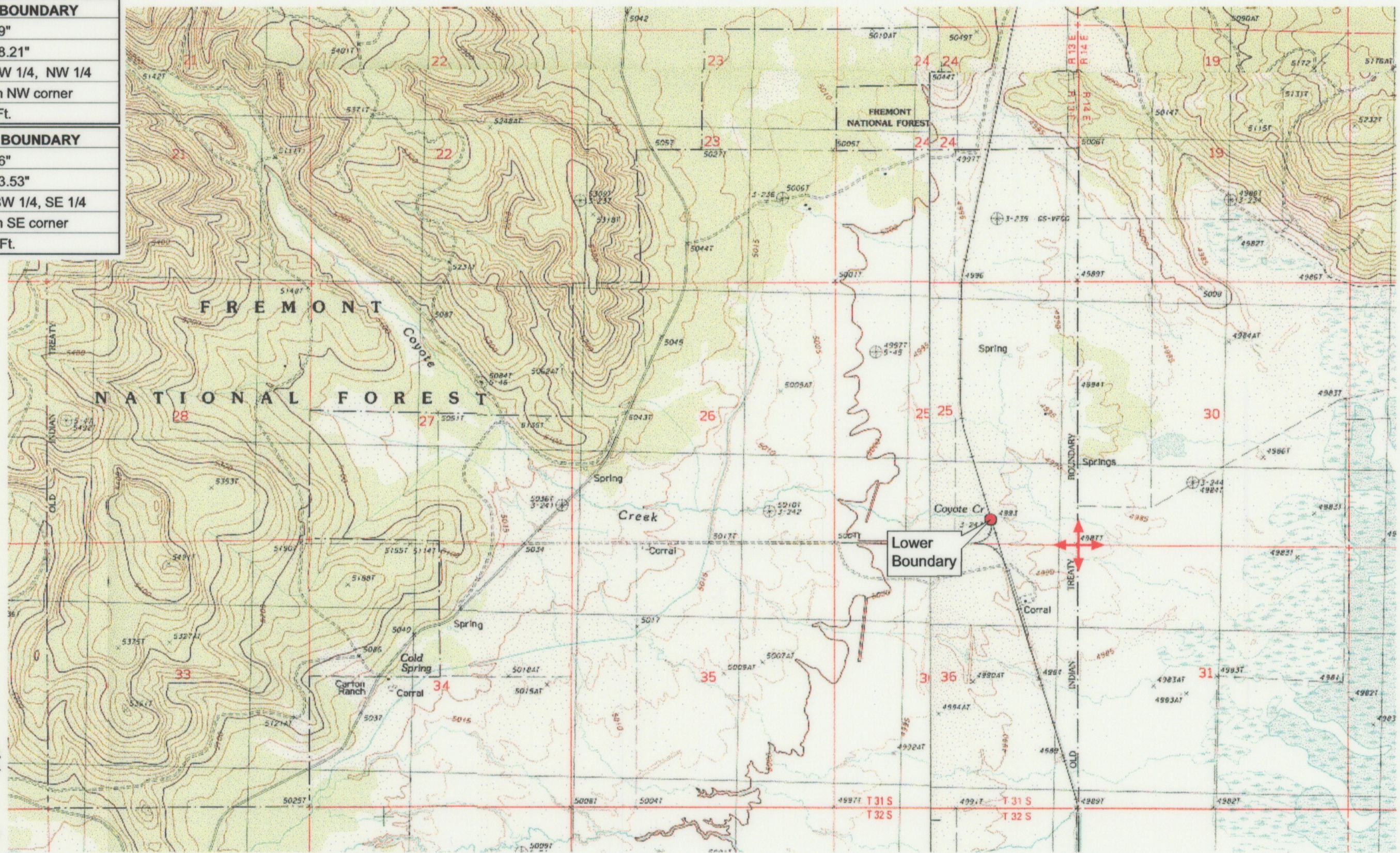
OCT 01 1999

WATER RESOURCES DEPT.  
 SALEM, OREGON

**Klamath Basin Water Rights Claim #667**  
 Department of the Interior Bureau of Indian Affairs  
 Reach Name: **Sycan River #10 (SY 10)**  
 Scale: 1:24,000 (Amended)

\\Lafayette\Graphics\Projects\GIS\BIA\60177.26\Topo\1117gis2.m8

<b>UPPER REACH BOUNDARY</b>
Latitude: 42° 53' 31.59"
Longitude: 121° 14' 48.21"
T 31S, R 12E, S 13, NW 1/4, NW 1/4
Bearing/Distance: From NW corner S 87° 15' 6" E, 1,072.7 Ft.
<b>LOWER REACH BOUNDARY</b>
Latitude: 42° 50' 59.66"
Longitude: 121° 07' 13.53"
T 31S, R 13E, S 25, SW 1/4, SE 1/4
Bearing/Distance: From SE corner N 73° 9' 43" W, 2,271.0 Ft.



Source: USGS 7.5 Minute  
 Quad: Partin Butte, Sycan  
 Marsh West, Sycan Marsh East,  
 Yamsay Mtn., Hamelton Butte.

Vertical Datum: National  
 Geodetic Vertical Datum of  
 1929.  
 Horizontal Datum: 1927 North  
 American Datum.

**KLAMATH ADJUDICATION**  
 CLAIM # **667** PAGE # **020**

Reach: Coyote Creek.  
 Plate 2 of 2.

**RECEIVED**

OCT 01 1999

WATER RESOURCES DEPT.  
 SALEM, OREGON

**Klamath Basin Water Rights Claim #667**  
 Department of the Interior Bureau of Indian Affairs  
 Reach Name: **Sycan River #10 (SY 10)**  
 Scale: 1:24,000 (Amended)

\\Lafayette\Graphics\Projects\GIS\BIA\60177.26\Topo\1117gis2.th8