

RECEIVED

MAR 0 1 1999

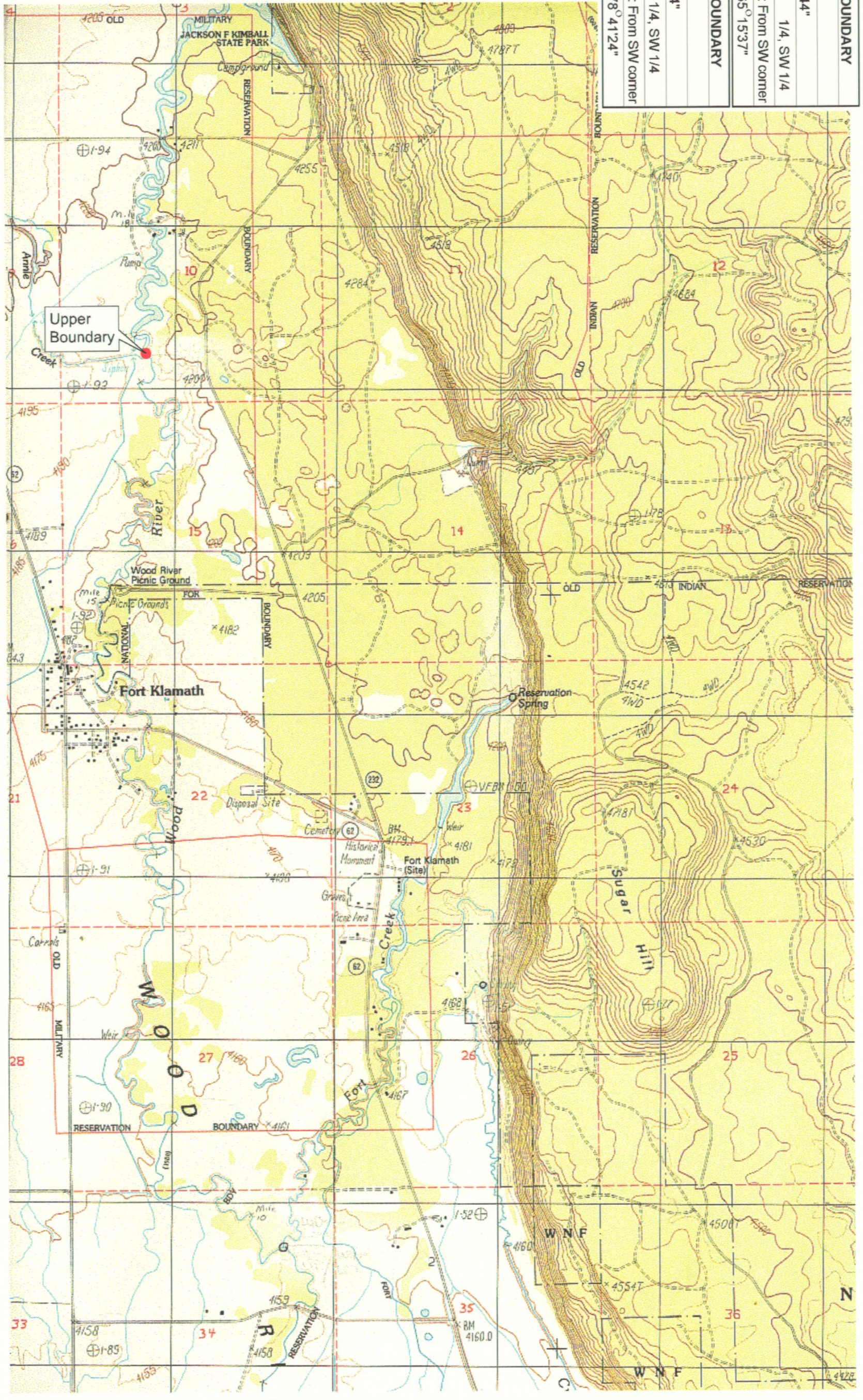
WATER RESOURCES DEPT
SALEM, OREGON

UPPER REACH BOUNDARY
Latitude: 42° 43' 18.57"
Longitude: 121° 59' 18.44"
T 33S, R 7.5E, S 10, SE 1/4, SW 1/4
Distance/Bearing/Azimuth: From SW corner N 65° 15' 37" E, 591.9m, 65° 15' 37"
LOWER REACH BOUNDARY
Latitude: 42° 36' 15.93"
Longitude: 121° 57' 0.34"
T 34S, R 7.5E, S 13, SW 1/4, SW 1/4
Distance/Bearing/Azimuth: From SW corner N 78° 41' 24" E, 369.3m, 78° 41' 24"



Source: USGS 7.5 Minute
Quad: Fort Klamath, Fort Creek,
Agency Lake.

Vertical Datum: National
Geodetic Vertical Datum of 1929
Horizontal Datum: 1927 North
American Datum.



KLAMATH ADJUDICATION
CLAIM 668 PAGE # **05**

Reach boundaries: Annie Creek to Agency Lake.
Plate 1 of 2.

Klamath Basin Water Rights Claim Map
Department of the Interior Bureau of Indian Affairs
Reach Name: **Wood River #2**
Scale: 1:24,000

f:\ea\graphics\1117\gs1.mxd

UPPER REACH BOUNDARY

Latitude: 42° 43' 18.57"

Longitude: 121° 59' 18.44"

T 33S, R 7.5E, S 10, SE 1/4, SW 1/4

Distance/Bearing/Azimuth: From SW corner N 65° 15'37" E, 591.9m, 65° 15'37"

LOWER REACH BOUNDARY

Latitude: 42° 36' 15.93"

Longitude: 121° 57' 0.34"

T 34S, R 7.5E, S 13, SW 1/4, SW 1/4

Distance/Bearing/Azimuth: From SW corner N 78° 41'24" E, 369.3m, 78° 41'24"

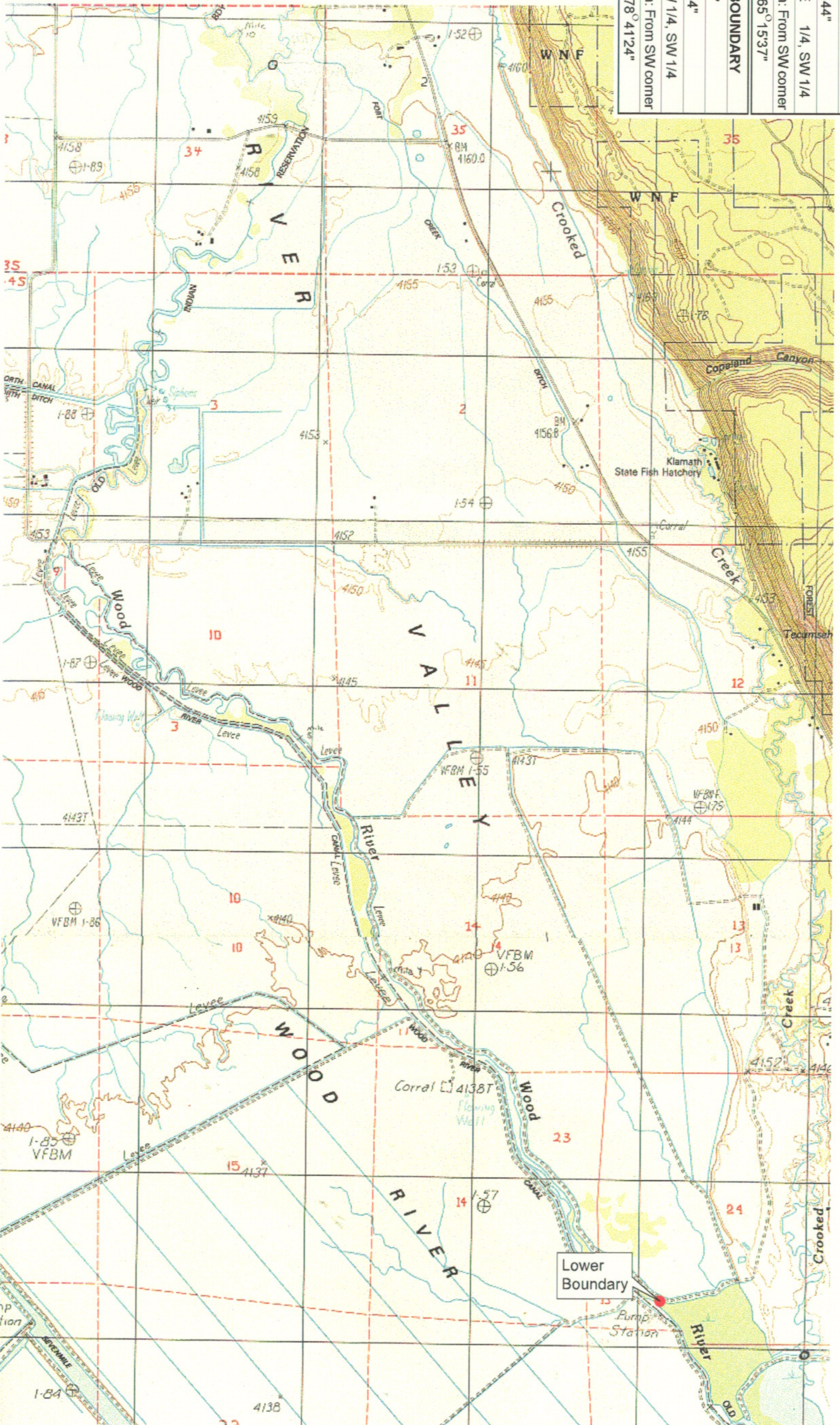
RECEIVED

MAR 01 1999

WATER RESOURCES DEPT.
SALEM OREGON



Source: USGS 7.5 Minute
Quad: Fort Klamath, Fort Creek
Agency Lake.
Vertical Datum: National
Geodetic Vertical Datum of 1929
Horizontal Datum: 1927 North
American Datum.

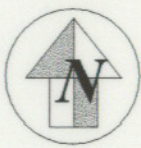
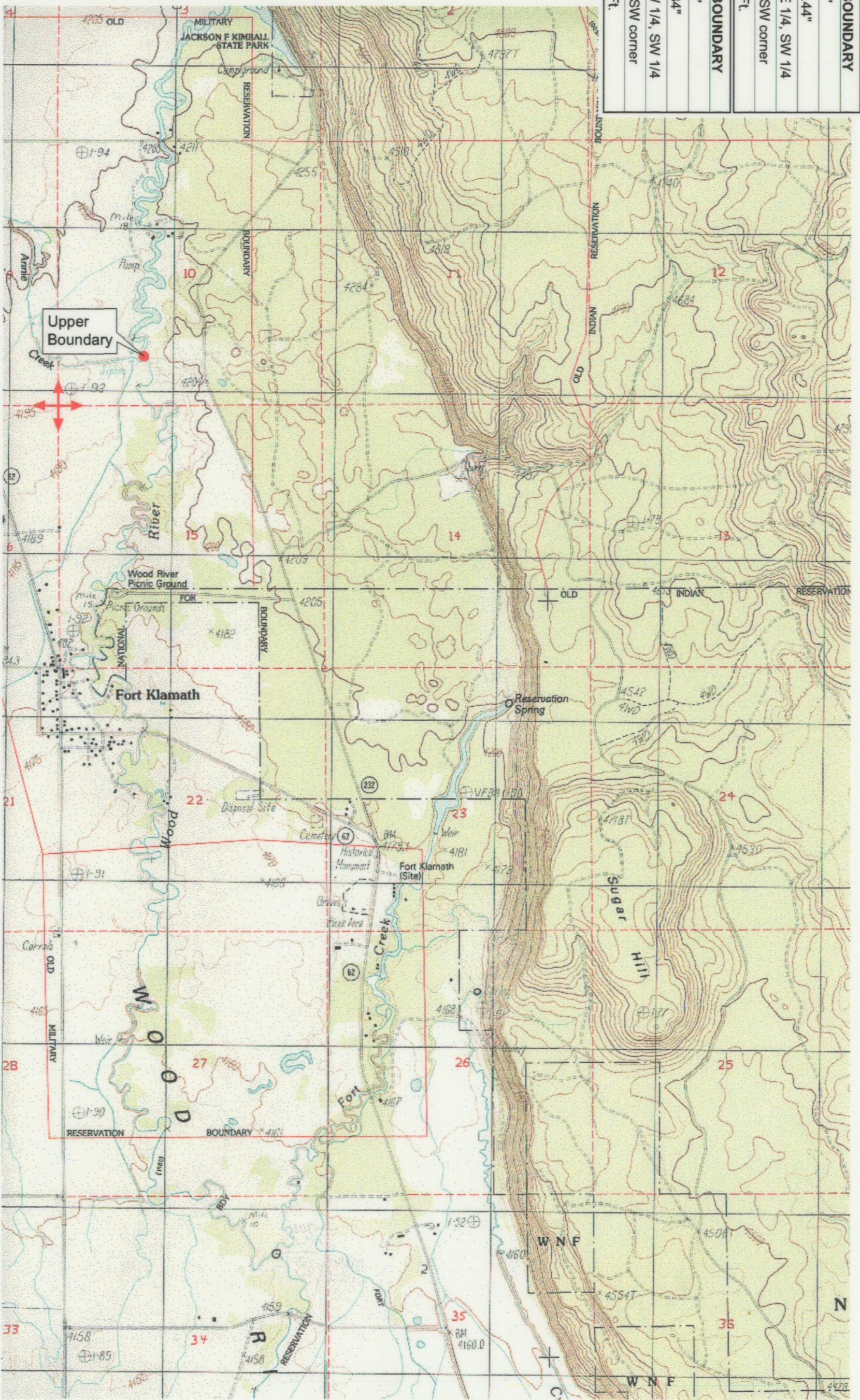


KLAMATH ADJUDICATION
CLAIM 668 PAGE # 06

Reach boundaries: Annie Creek to Agency Lake.
Plate 2 of 2.

Klamath Basin Water Rights Claim Map
Department of the Interior Bureau of Indian Affairs
Reach Name: Wood River #2
Scale: 1:24,000

UPPER REACH BOUNDARY
Latitude: 42° 43' 18.57"
Longitude: 121° 59' 18.44"
T 33S, R 7.5E, S 10, SE 1/4, SW 1/4
Bearing/Distance: From SW corner N 65° 15' 37" E, 1,942.1 Ft.
LOWER REACH BOUNDARY
Latitude: 42° 36' 15.93"
Longitude: 121° 57' 0.34"
T 34S, R 7.5E, S 24, SW 1/4, SW 1/4
Bearing/Distance: From SW corner N 78° 41' 24" E, 1,211.8 Ft.



Source: USGS 7.5 Minute
 Quad: Fort Klamath, Fort Creek,
 Agency Lake.
 Vertical Datum: National
 Geodetic Vertical Datum of 1929.
 Horizontal Datum: 1927 North
 American Datum.

KLAMATH ADJUDICATION
 CLAIM # **668** PAGE # **013**

Reach boundaries: Annie Creek to Agency Lake.
 Plate 1 of 2.

RECEIVED
 OCT 01 1999

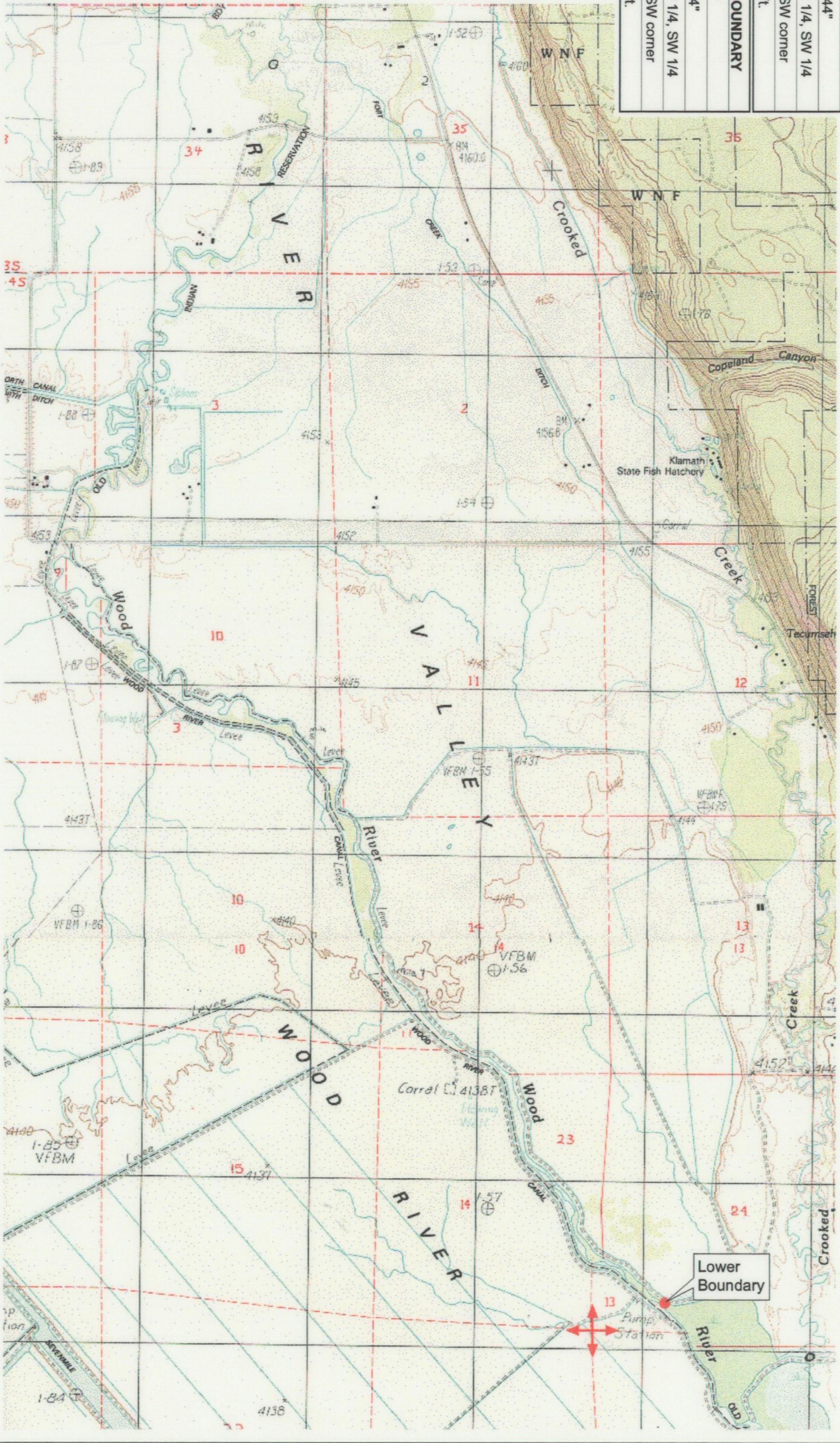
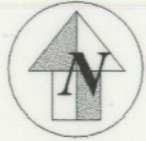
WATER RESOURCES DEPT.
 SALEM, OREGON

Klamath Basin Water Rights Claim #668
 Department of the Interior Bureau of Indian Affairs
 Reach Name: Wood River #2 (WD 2)
 Scale: 1:24,000
 (Amended)

\\lafayette\Graphics\Projects\GIS\BIA\60177_26\Topo\1117g1s1.mxd

UPPER REACH BOUNDARY
Latitude: 42° 43' 18.57"
Longitude: 121° 59' 18.44"
T 33S, R 7.5E, S 10, SE 1/4, SW 1/4
Bearing/Distance: From SW corner N 65° 15' 37" E, 1,942.1 Ft.
LOWER REACH BOUNDARY
Latitude: 42° 36' 15.93"
Longitude: 121° 57' 0.34"
T 34S, R 7.5E, S 24, SW 1/4, SW 1/4
Bearing/Distance: From SW corner N 78° 41' 24" E, 1,211.8 Ft.

Source: USGS 7.5 Minute
 Quad: Fort Klamath, Fort Creek,
 Agency Lake.
 Vertical Datum: National
 Geodetic Vertical Datum of 1929.
 Horizontal Datum: 1927 North
 American Datum.



KLAMATH ADJUDICATION
 CLAIM # **668** PAGE # **014**

Reach boundaries: Annie Creek to Agency Lake.
 Plate 2 of 2.

RECEIVED

OCT 01 1999

WATER RESOURCES DEPT.
 SALEM, OREGON

Klamath Basin Water Rights Claim #668

Department of the Interior Bureau of Indian Affairs

Reach Name: Wood River #2 (WD 2)

Scale: 1:24,000 (Amended)

\\lafayette\graphics\projects\GIS\BIA\60177_26\Topo\1117g11.mxd