

UPPER REACH BOUNDARY

Latitude: 42° 41' 12.01"
Longitude: 121° 57' 49.46"
T 33S, R 7.5E, S 26, NW 1/4, NE 1/4
Distance/Bearing/Azimuth: From NE corner S 59° 38' 53" W, 781.5m, 239° 38' 53"
LOWER REACH BOUNDARY
Latitude: 42° 36' 1.06"
Longitude: 121° 56' 18.12"
T 34S, R 7.5E, S 24, NW 1/4, NE 1/4
Distance/Bearing/Azimuth: From NW corner S 89° 13' 50" W, 477.6m, 269° 13' 50"

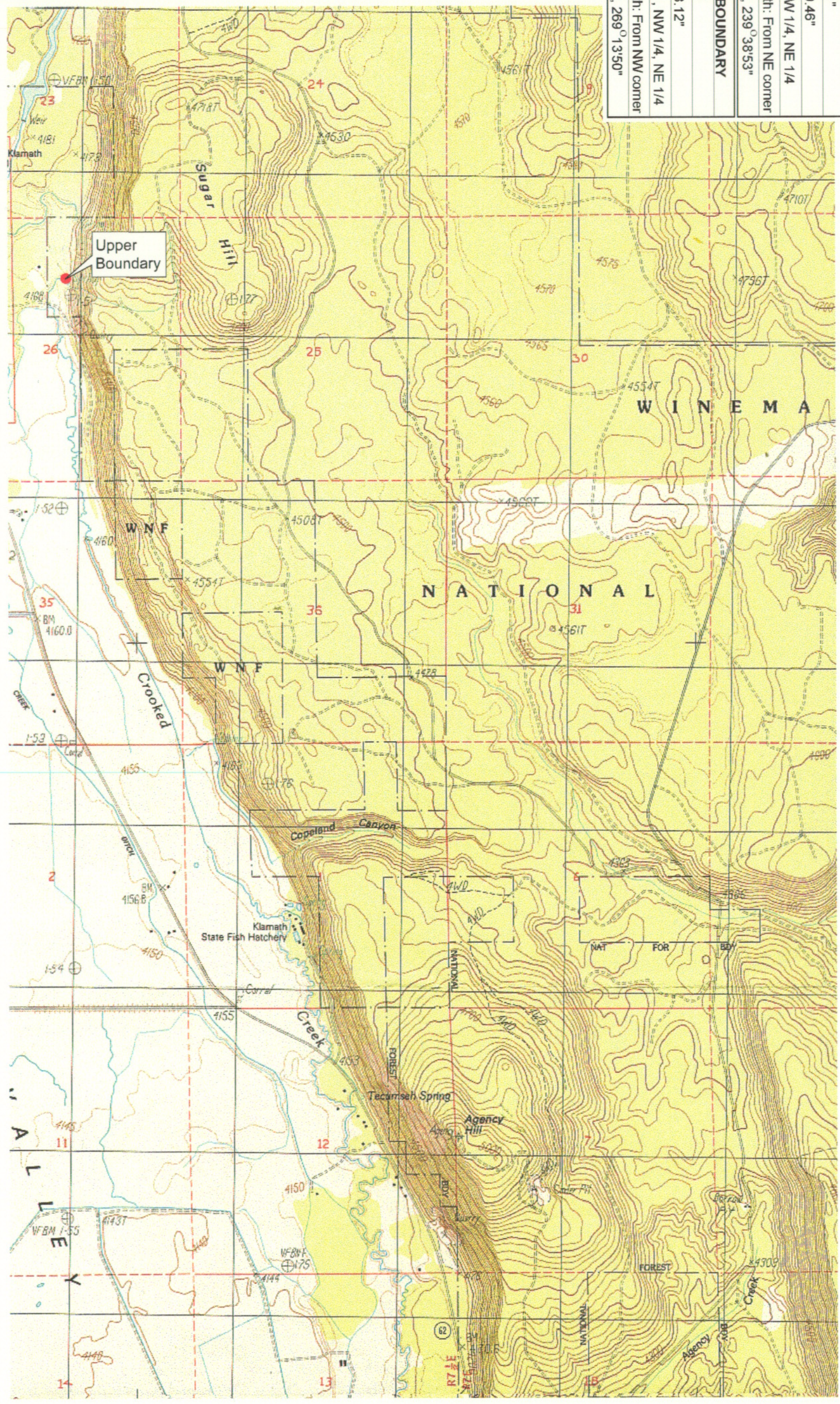
RECEIVED

MAR 01 1999

WATER RESOURCES DEPT.
SALEM, OREGON



Source: USGS 7.5 Minute
Quad: Fort Klamath, Agency
Lake.
Vertical Datum: National
Geodetic Vertical Datum of
1929.
Horizontal Datum: 1927 North
American Datum.



KLAMATH ADJUDICATION

CLAIM 669 PAGE # 05

Reach: Crooked Creek.
Plate 1 of 2.

Klamath Basin Water Rights Claim Map
Department of the Interior Bureau of Indian Affairs
Reach Name: Wood River #3
Scale: 1:24,000

f:\ea\graphics\1117gk1.m5

UPPER REACH BOUNDARY

Latitude: 42° 41' 12.01"
Longitude: 121° 57' 49.46"
T 33S, R 7.5E, S 26, NW 1/4, NE 1/4
Distance/Bearing/Azimuth: From NE corner S 59° 38' 53" W, 781.5m, 239° 38' 53"
LOWER REACH BOUNDARY
Latitude: 42° 36' 1.06"
Longitude: 121° 56' 18.12"
T 34S, R 7.5E, S 24, NW 1/4, NE 1/4
Distance/Bearing/Azimuth: From NW corner S 89° 13' 50" W, 477.6m, 269° 13' 50"

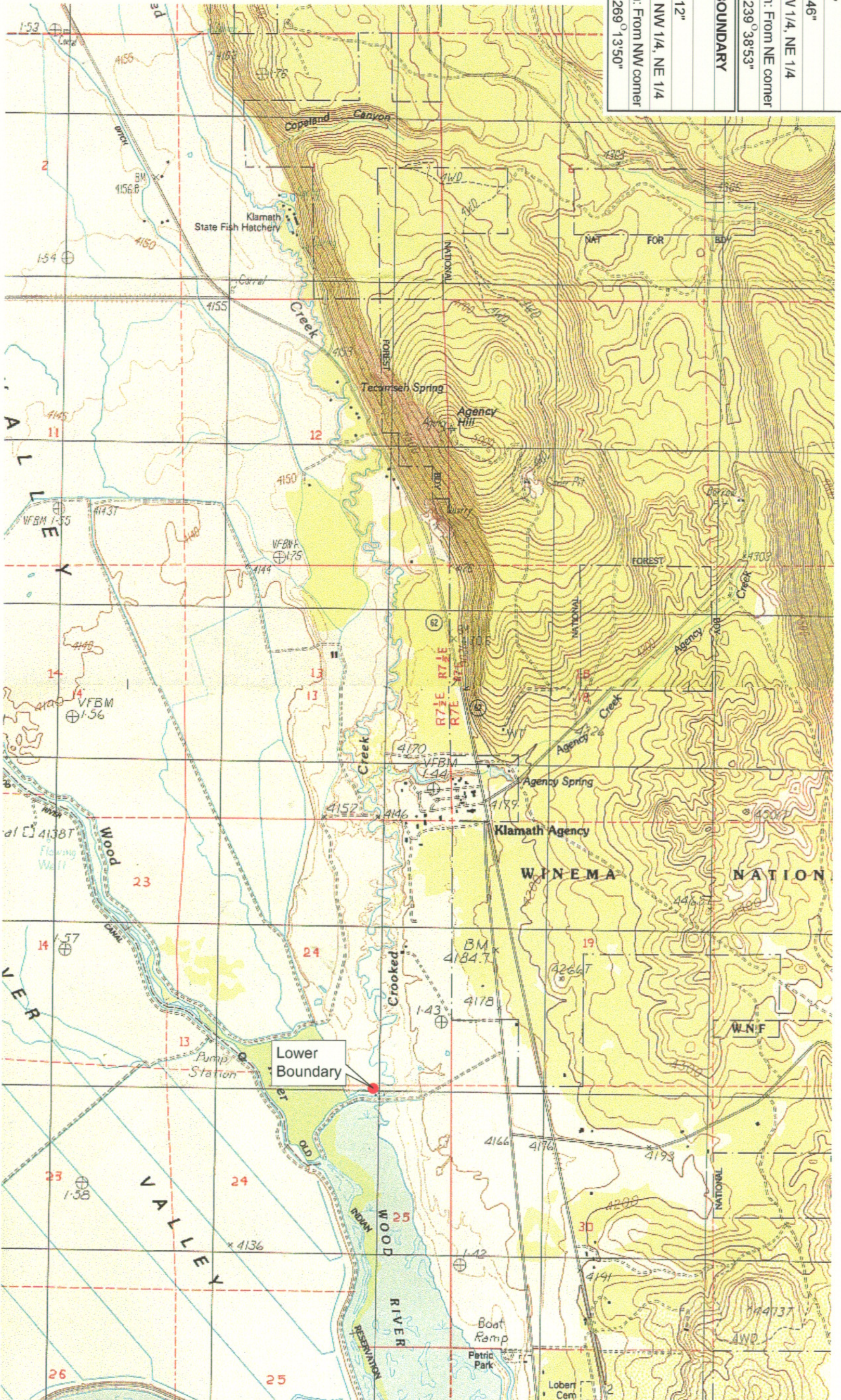
RECEIVED

MAR 01 1999

WATER RESOURCES DEPT.
SALEM, OREGON



Source: USGS 7.5 Minute
Quad: Fort Klamath, Agency
Lake.
Vertical Datum: National
Geodetic Vertical Datum of
1929
Horizontal Datum: 1927 North
American Datum.



KLAMATH ADJUDICATION
CLAIM # **669** PAGE # **06**

Reach: Crooked Creek.
Plate 2 of 2.

Klamath Basin Water Rights Claim Map
Department of the Interior Bureau of Indian Affairs
Reach Name: **Wood River #3**
Scale: 1:24,000

f:\ea\graphics\1117.gis\1.mxd

UPPER REACH BOUNDARY
Latitude: 42° 41' 12.01"
Longitude: 121° 57' 49.46"
T 33S, R 7.5E, S 26, NW 1/4, NE 1/4
Bearing/Distance: From NE corner S 59° 38' 53" W, 2,564.0 Ft.
LOWER REACH BOUNDARY
Latitude: 42° 36' 1.06"
Longitude: 121° 56' 18.12"
T 34S, R 7.5E, S 25, NW 1/4, NE 1/4
Bearing/Distance: From NE corner S 89° 13' 50" W, 1,567.1 Ft.



Source: USGS 7.5 Minute
 Quad: Fort Klamath, Agency
 Lake.
 Vertical Datum: National
 Geodetic Vertical Datum of
 1929.
 Horizontal Datum: 1927 North
 American Datum.



KLAMATH ADJUDICATION
 CLAIM # **669** PAGE # **018**

Reach: Crooked Creek.
 Plate 1 of 2.

RECEIVED

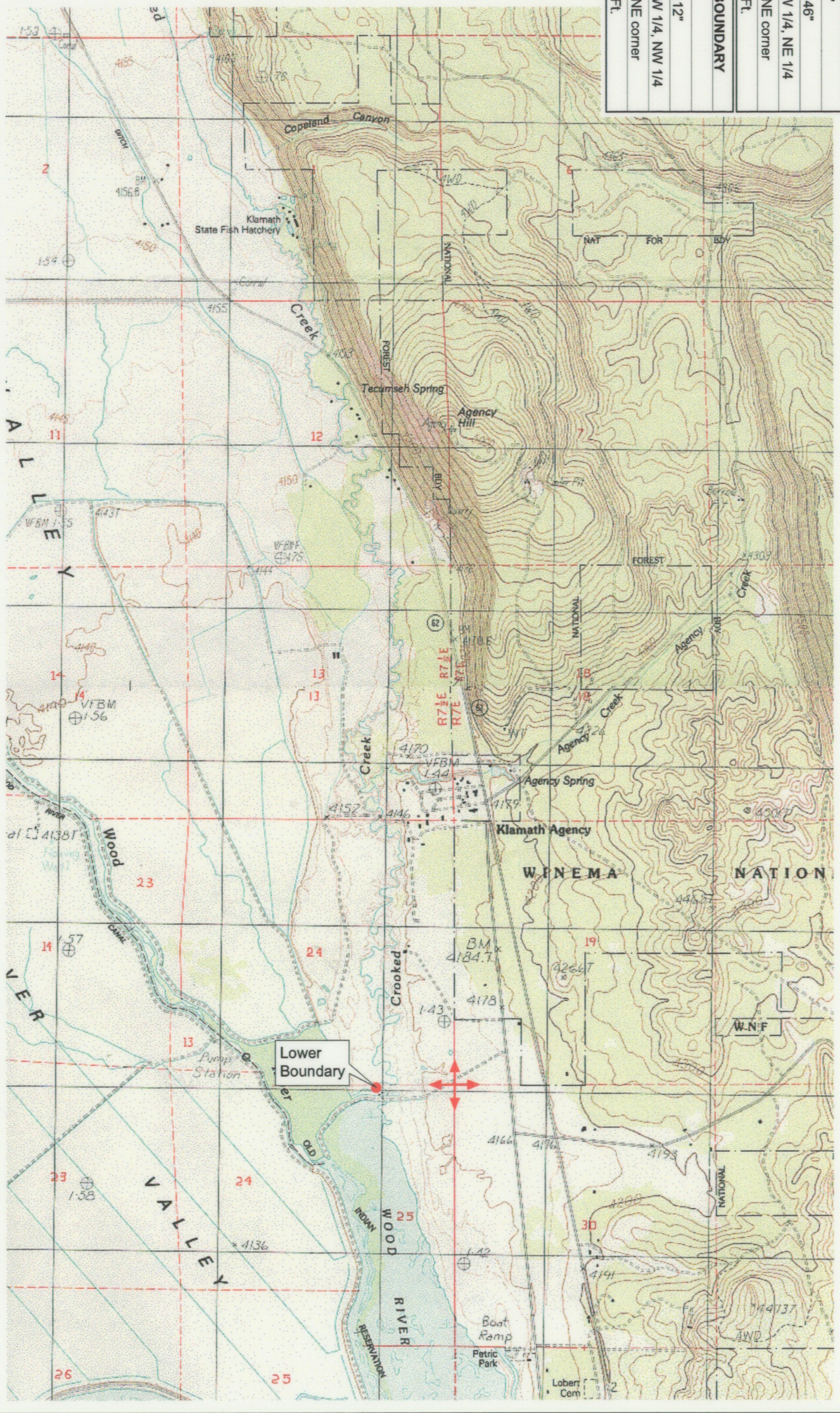
OCT 01 1999

WATER RESOURCES DEPT.
 SALEM, OREGON

Klamath Basin Water Rights Claim #669
 Department of the Interior Bureau of Indian Affairs
 Reach Name: **Wood River #3 (WD 3)**
 Scale: 1:24,000
 (Amended)

\\arfay\etk\Graphics\Projects\GIS\BIA\60177_26\Topo\11179\1.fth

UPPER REACH BOUNDARY
Latitude: 42° 41' 12.01"
Longitude: 121° 57' 49.46"
T 33S, R 7.5E, S 26, NW 1/4, NE 1/4
Bearing/Distance: From NE corner S 59° 38' 53" W, 2,564.0 Ft.
LOWER REACH BOUNDARY
Latitude: 42° 36' 1.06"
Longitude: 121° 56' 18.12"
T 34S, R 7.5E, S 25, NW 1/4, NW 1/4
Bearing/Distance: From NE corner S 89° 13' 50" W, 1,567.1 Ft.



Source: USGS 7.5 Minute
 Quad: Fort Klamath, Agency
 Lake.
 Vertical Datum: National
 Geodetic Vertical Datum of
 1929.
 Horizontal Datum: 1927 North
 American Datum.

KLAMATH ADJUDICATION
 CLAIM # **669** PAGE # **019**

Reach: Crooked Creek.
 Plate 2 of 2.

RECEIVED

OCT 01 1999

WATER RESOURCES DEPT.
 SALEM, OREGON

Klamath Basin Water Rights Claim #669
 Department of the Interior Bureau of Indian Affairs
 Reach Name: **Wood River #3 (WD 3)**
 Scale: 1:24,000
 (Amended)

\\lafayette\graphics\Projects\GIS\BIA60177_26\Topo\1117g1s1.mxd