

UPPER REACH BOUNDARY
Latitude: 42° 42' 9.38"
Longitude: 121° 57' 40.56"
T 33S, R 7.5E, S 23, NW 1/4, NE 1/4
Distance/Bearing/Azimuth: From NE corner S 65° 50' 56" W, 536.3m, 245° 50' 56"
LOWER REACH BOUNDARY
Latitude: 42° 40' 20.41"
Longitude: 121° 58' 42.97"
T 33S, R 7.5E, S 34, NE 1/4, NE 1/4
Distance/Bearing/Azimuth: From NE corner S 41° 28' 52" W, 481.2m, 221° 28' 52"

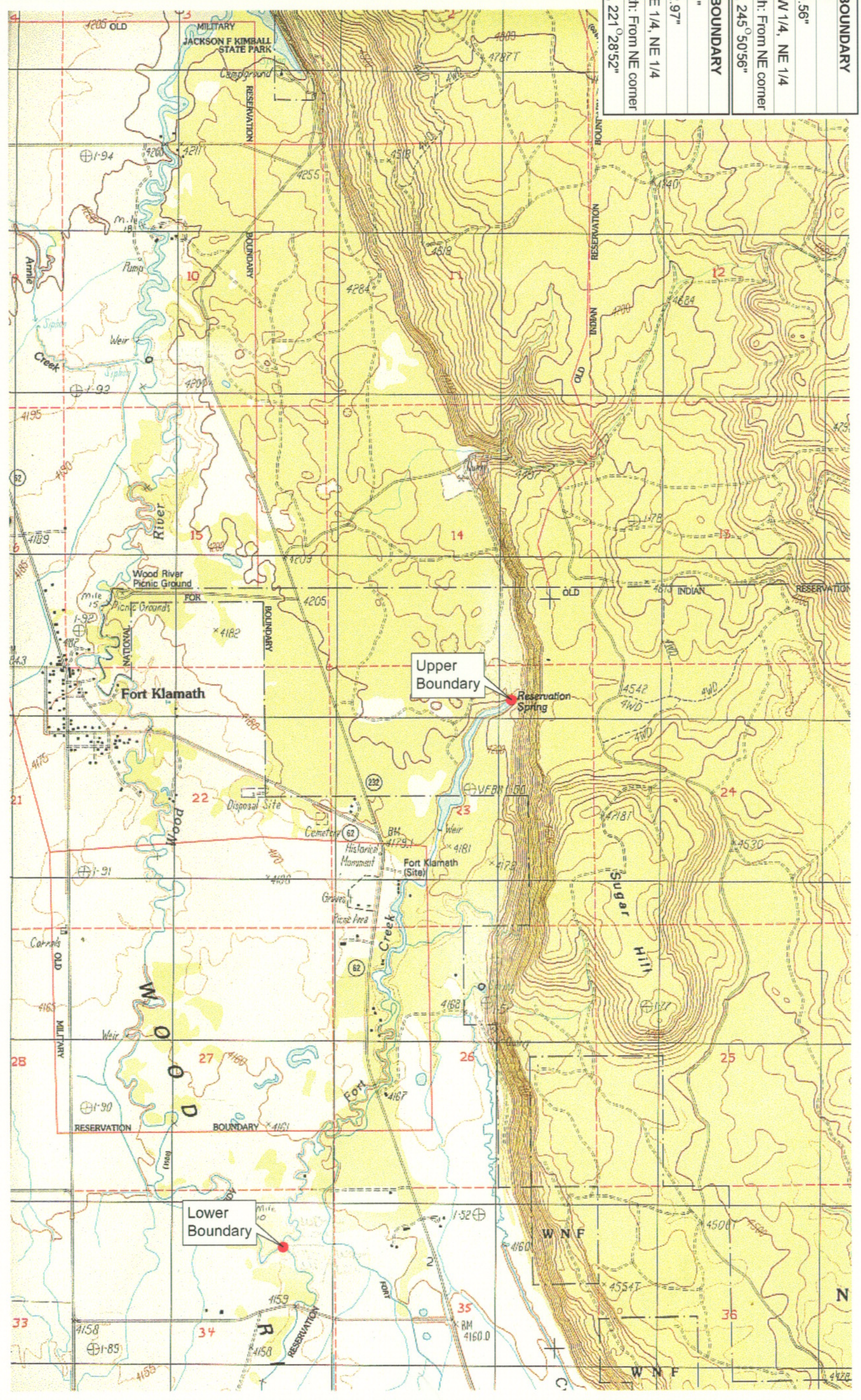
RECEIVED

MAR 01 1999

WATER RESOURCES DEPT
SALEM, OREGON



Source: USGS 7.5 Minute
Quad: Fort Klamath.
Vertical Datum: National
Geodetic Vertical Datum of
1929.
Horizontal Datum: 1927 North
American Datum.



KLAMATH ADJUDICATION
CLAIM 670 PAGE # 04

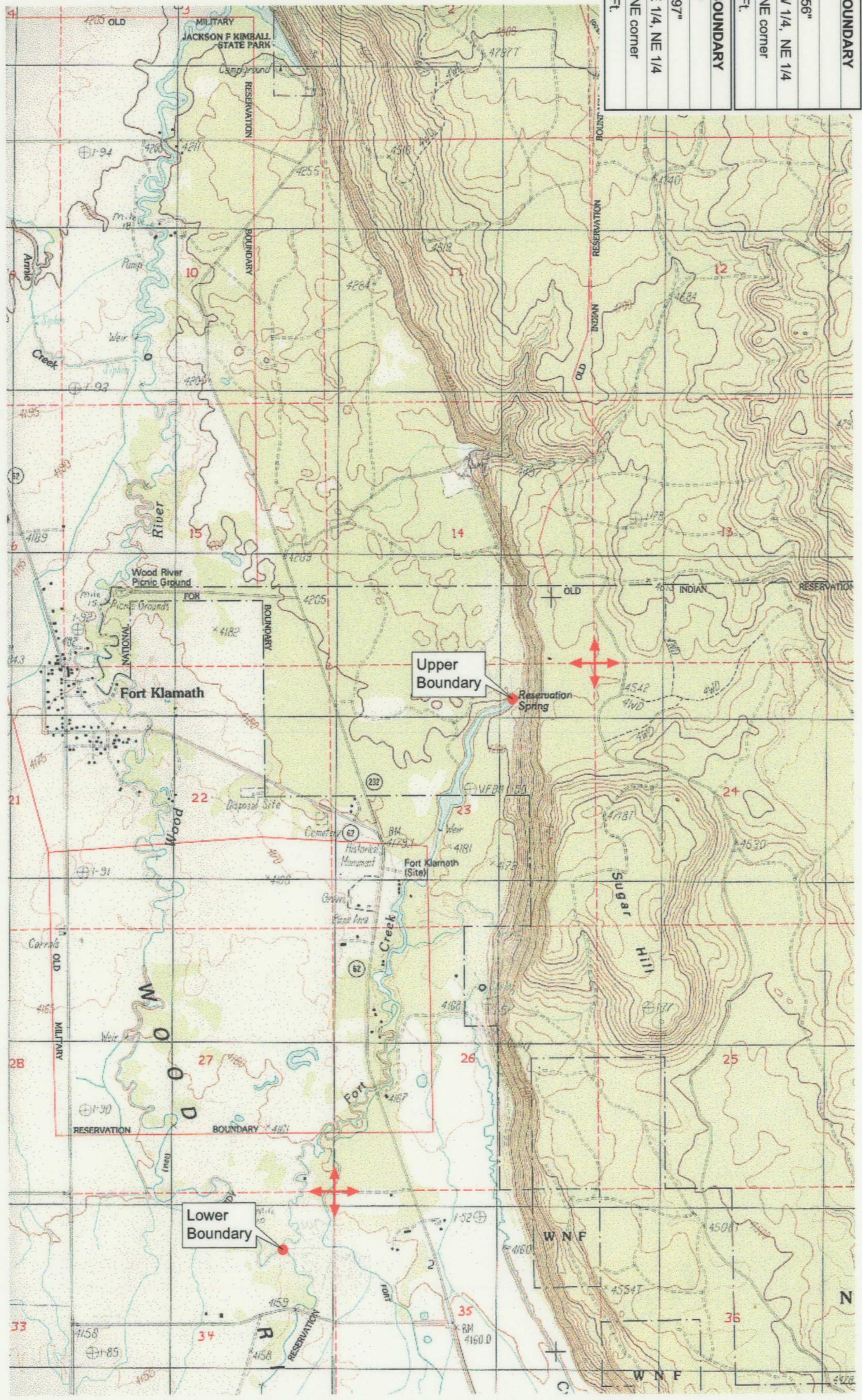
Reach: Fort Creek.
Plate 1 of 1.

Klamath Basin Water Rights Claim Map
Department of the Interior Bureau of Indian Affairs
Reach Name: Wood River #4
Scale: 1:24,000

UPPER REACH BOUNDARY
Latitude: 42° 42' 9.38"
Longitude: 121° 57' 40.56"
T 33S, R 7.5E, S 23, NW 1/4, NE 1/4
Bearing/Distance: From NE corner S 65° 50' 56" W, 1,759.5 Ft.
LOWER REACH BOUNDARY
Latitude: 42° 40' 20.41"
Longitude: 121° 58' 42.97"
T 33S, R 7.5E, S 34, NE 1/4, NE 1/4
Bearing/Distance: From NE corner S 41° 28' 52" W, 1,578.7 Ft.



Source: USGS 7.5 Minute Quad: Fort Klamath.
Vertical Datum: National Geodetic Vertical Datum of 1929.
Horizontal Datum: 1927 North American Datum.



KLAMATH ADJUDICATION
CLAIM # **670** PAGE # **016**

Reach: Fort Creek.
Plate 1 of 1.

RECEIVED
OCT 01 1999
WATER RESOURCES DEPT.
SALEM, OREGON

Klamath Basin Water Rights Claim #670
Department of the Interior Bureau of Indian Affairs
Reach Name: Wood River #4 (WD 4)
Scale: 1:24,000
(Amended)
\\latroy\et\Graphics\Projects\GIS\BA\60177_261\Topo\1117\g1s1.frb