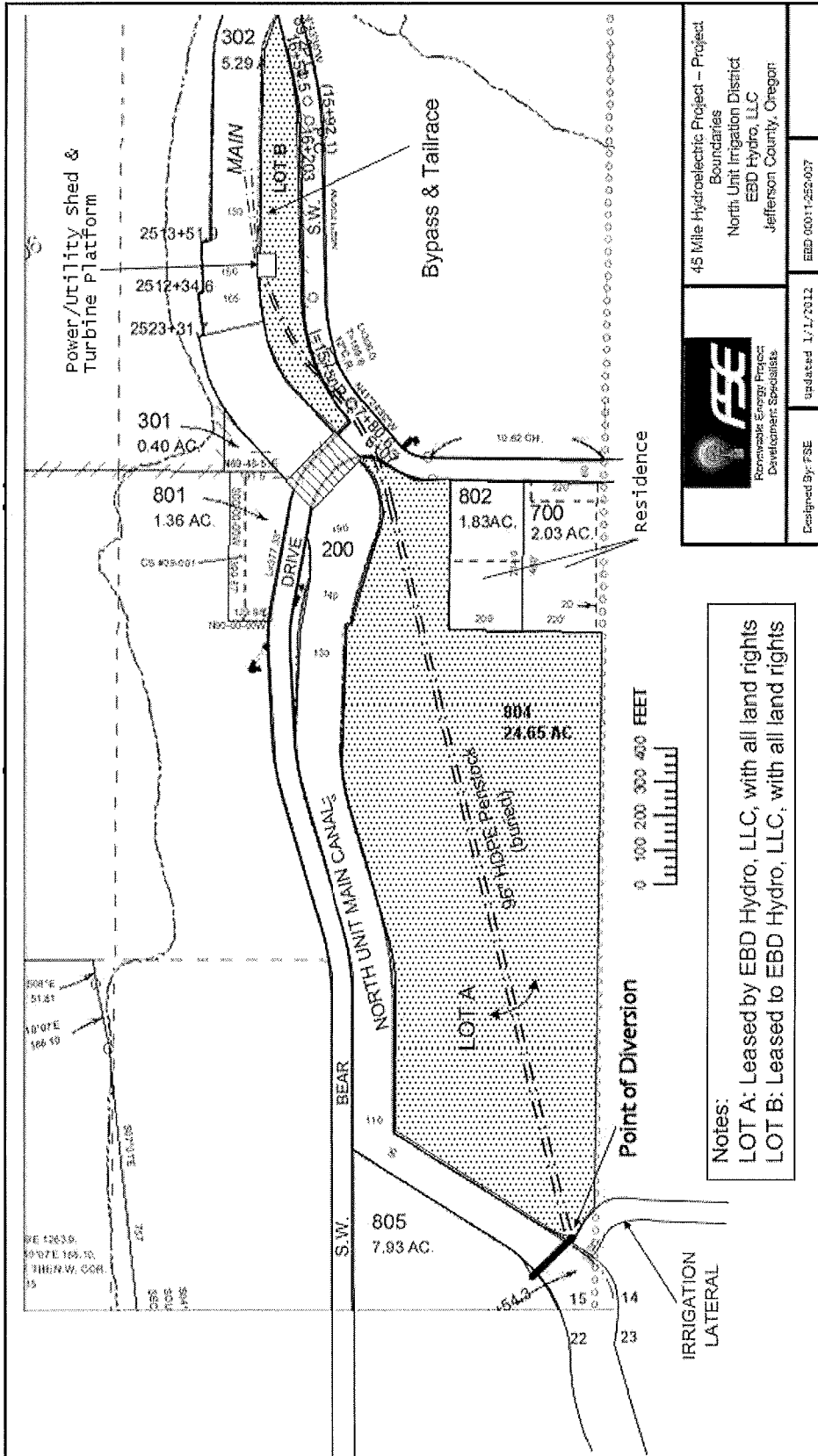


EXHIBIT A - MAP TO ACCOMPANY APPLICATION FOR
 HYDROELECTRIC LICENSE
 45 -Mile Hydroelectric Project Boundary
 SECTION 15 T.12S. R.13E. W.M. - 12.13.15



Notes:
 LOT A: Leased by EBD Hydro, LLC, with all land rights
 LOT B: Leased to EBD Hydro, LLC, with all land rights

RECEIVED

MAR 05 2012

WATER RESOURCES DEPT
 SALEM, OREGON