

RECEIVED

FEB 23 1993

WATER RESOURCES DEPT  
SALEM, OREGON

Map of  
Pre-1909 Vested Water Claim

for

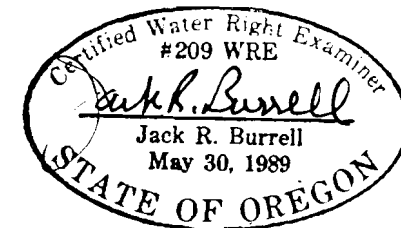
CORY AND GEORGE KOOS

Sec. 32, T. 11 S., R. 2 W., W.M.  
Linn County, Oregon

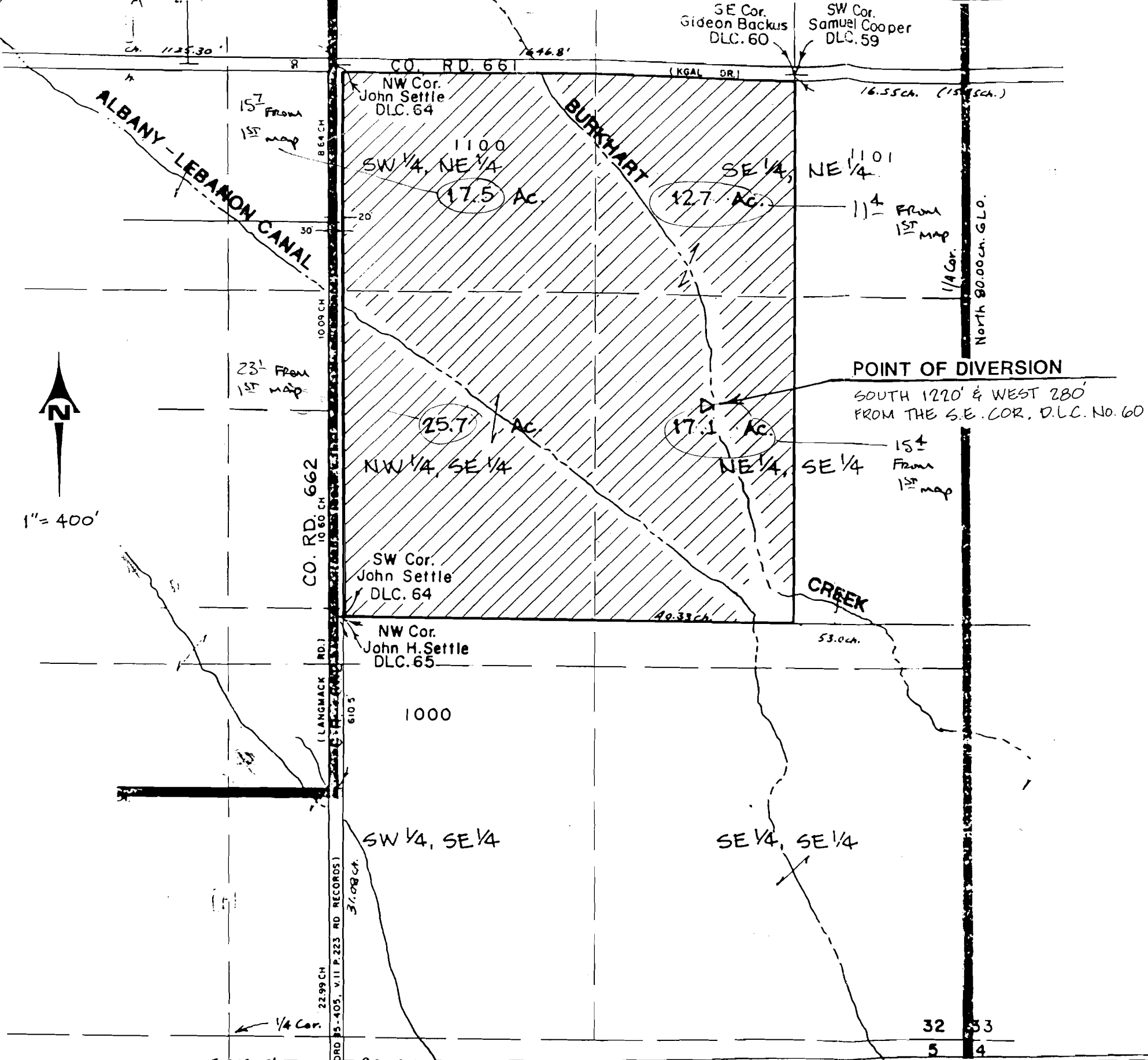
January 18, 1993

LAND IRRIGATION

SW 1/4, NE 1/4	-	17.5 AC.
SE 1/4, NE 1/4	-	12.7 AC.
NW 1/4, SE 1/4	-	25.7 AC.
NE 1/4, SE 1/4	-	17.1 AC.
<b>TOTAL:</b>		<b>73.0 AC.</b>



EXPIRATION DATE: 12/31/93



**KD ENGINEERING, INC.**  
 202 NW HICKORY STREET  
 POST OFFICE BOX 725  
 ALBANY, OREGON 97321

**KOOS WATER RIGHT**  
 LOCATED IN  
 SEC. 32, T. 11 S., R. 2 W., W.M., LINN COUNTY, OR.

DSGN. BY:	SCALE: 1" = 400'
DWG. BY: M.M.S.	DATE: JAN 18, 1993
CKD. BY: J.R.B.	PROJECT NO: 92-152

SHEET NO.  
**1**