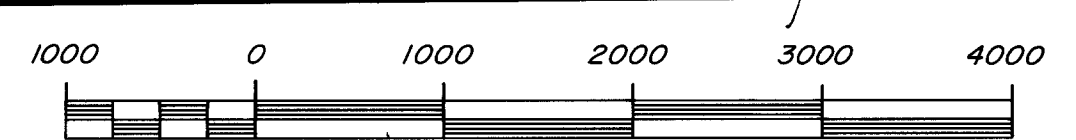


T.41S.

OREGON  
NEVADA



SCALE 1" = 1000'

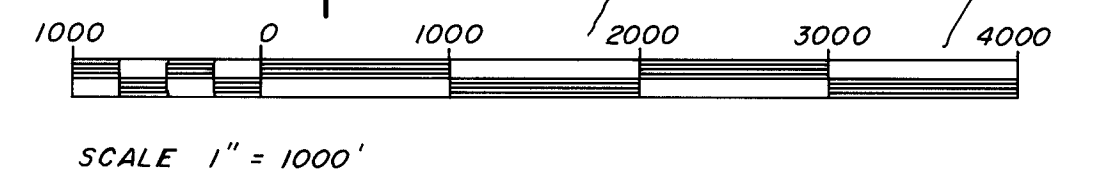
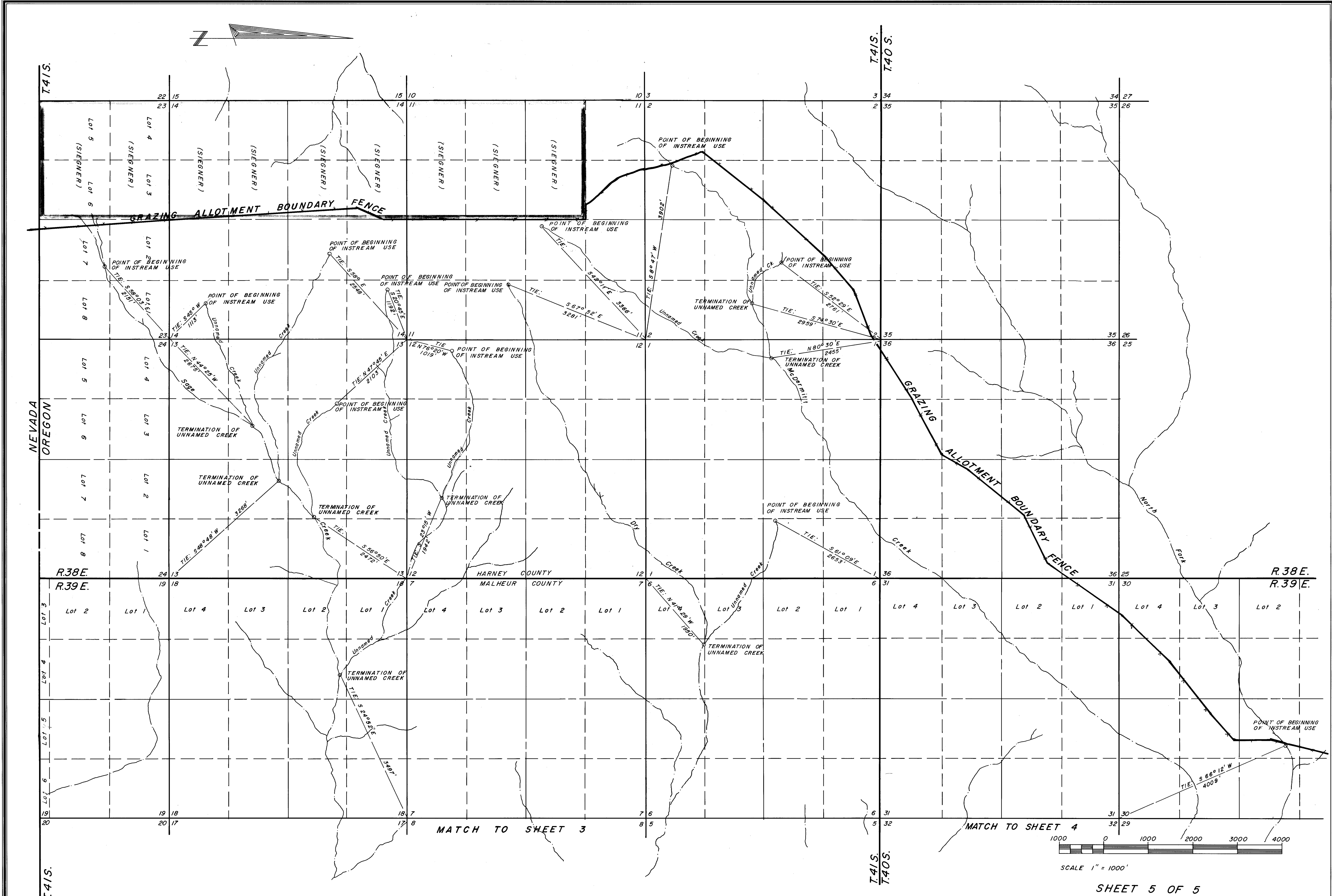
SHEET 3 OF 5

RECEIVED  
DEC 23 1992  
WATER RESOURCES DEPT  
SALEM, OREGON

Desert-Mountain Inc.  
Land and Water Right Surveyors  
146 West Second Street  
Winnemucca, Nevada 89445  
(702) 623-4414

MAP  
TO ACCOMPANY REGISTRATION STATEMENTS  
OF IN STREAM USE OF WATER  
FOR STOCKWATERING PURPOSES

By Evan & Tillie Zimmerman  
FROM MCDERMITT CREEK AND  
ITS TRIBUTARIES  
In Harney & Malheur County, Oregon



SHEET 5 OF 5

RECEIVED  
 DEC 22 1992  
 WATER RESOURCES DEPT  
 SALEM, OREGON

Desert-Mountain Inc.  
 Land and Water Right Surveyors  
 146 West Second Street  
 Winnemucca, Nevada 89445  
 (702) 623-4414

MAP  
 TO ACCOMPANY REGISTRATION STATEMENTS  
 OF IN STREAM USE OF WATER  
 FOR STOCKWATERING PURPOSES

By Evan & Tillie Zimmerman  
 FROM McDERMITT CREEK AND  
 ITS TRIBUTARIES  
 In Harney & Malheur County, Oregon