

SE 1/4 NE 1/4 SEC. 31 T. 3S. R. 10W. W.M.  
TILLAMOOK COUNTY

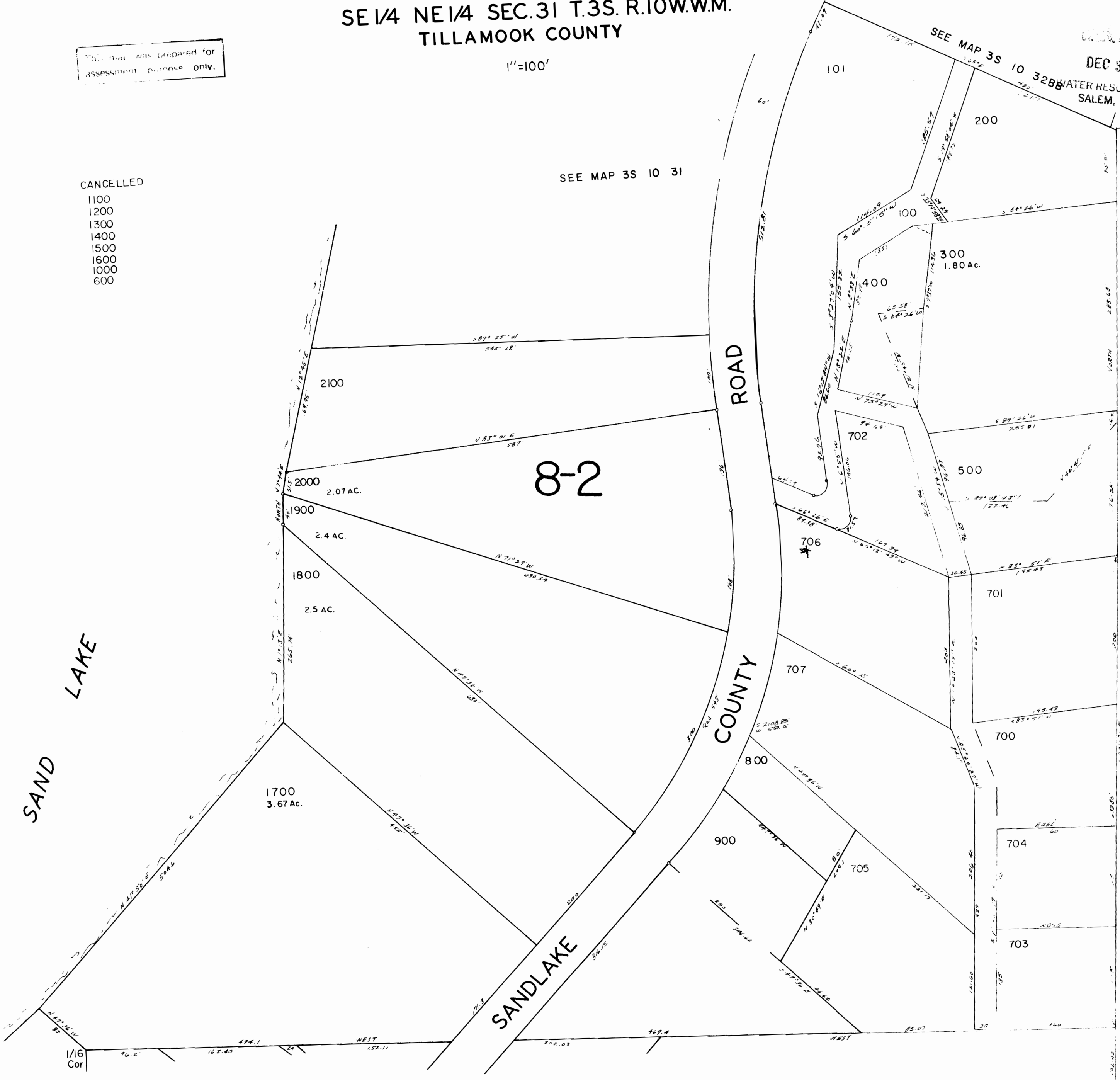
1"=100'

This map was prepared for  
assessment purpose only.

CANCELLED

- 1100
- 1200
- 1300
- 1400
- 1500
- 1600
- 1000
- 600

DEC 30 1992  
WATER RESOURCES DEPT.  
SALEM, OREGON



8-2

SAND LAKE

SANDLAKE

ROAD

COUNTY

SEE MAP 3S 10 31

SEE MAP 3S 10 32BB

SEE MAP 3S 10 31

SEE MAP 3S 10 31DA

SEE MAP 3S 10 31DB

Historical  
1/4

Proportioned  
1/4

3S 10 31AD