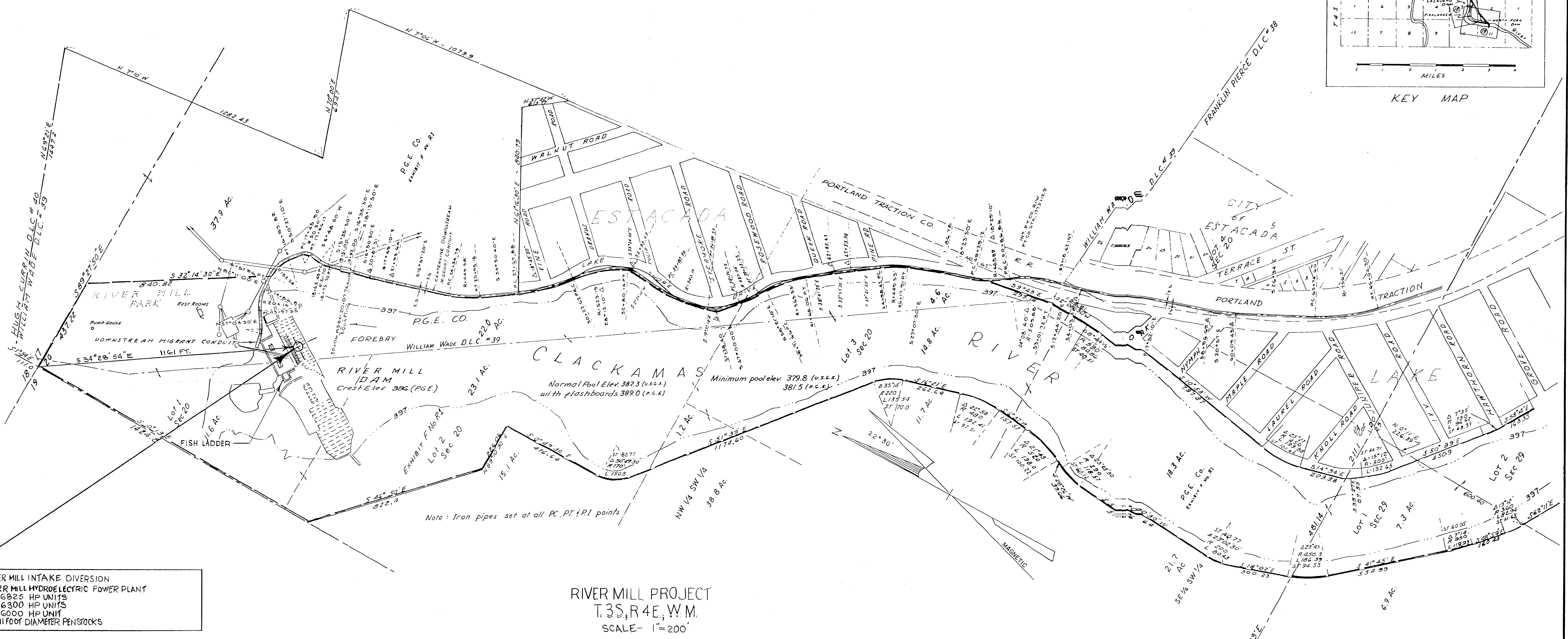


KEY MAP

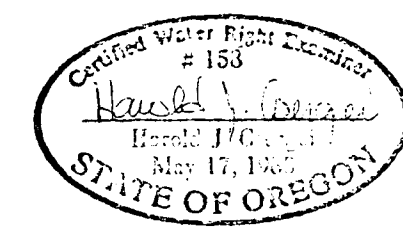


RIVER MILL INTAKE DIVERSION
 RIVER MILL HYDROELECTRIC POWER PLANT
 2- 6025 HP UNITS
 2- 6300 HP UNITS
 1- 6000 HP UNIT
 5- 11 FOOT DIAMETER PENSTOCKS

RIVER MILL PROJECT
 T. 3S, R. 4E, W. 1M.
 SCALE- 1"=200'

- REFERENCE DRAWINGS
- FERC RIVER MILL PROJECT LICENSE DRAWINGS
 - EXHIBIT L, SHT 1 OF 9
 - EXHIBIT L, SHT 2 OF 9
 - EXHIBIT L, SHT 5 OF 9
 - EXHIBIT L, SHT 9A OF 9

THE PURPOSE OF THIS MAP IS TO IDENTIFY THE LOCATION OF WATER RIGHTS. IT IS NOT INTENDED TO PROVIDE INFORMATION RELATIVE TO THE LOCATION OF PROPERTY OWNERSHIP BOUNDARY LINES.



THIS FINAL PROOF SURVEY WAS PERFORMED DURING THE PERIOD OCTOBER-DECEMBER, 1992.

REV.	DATE	DESCRIPTION	BY	CHK	ENGR	SUPV	MGR
REVISIONS							
PORTLAND GENERAL ELECTRIC CO. PORTLAND, OREGON							
RIVER MILL PROJECT PRE-1909 VESTED WATER RIGHTS FINAL PROOF SURVEY							
APPROVALS				SCALE: 1"=200'			
DESIGNER	DRAWN BY HJC						
DESIGN ENGR	CHECKED BY						
ENGR SUPV	DATE 12/28/92						
ENGR MANAGER	C-20443						

SWR-386