

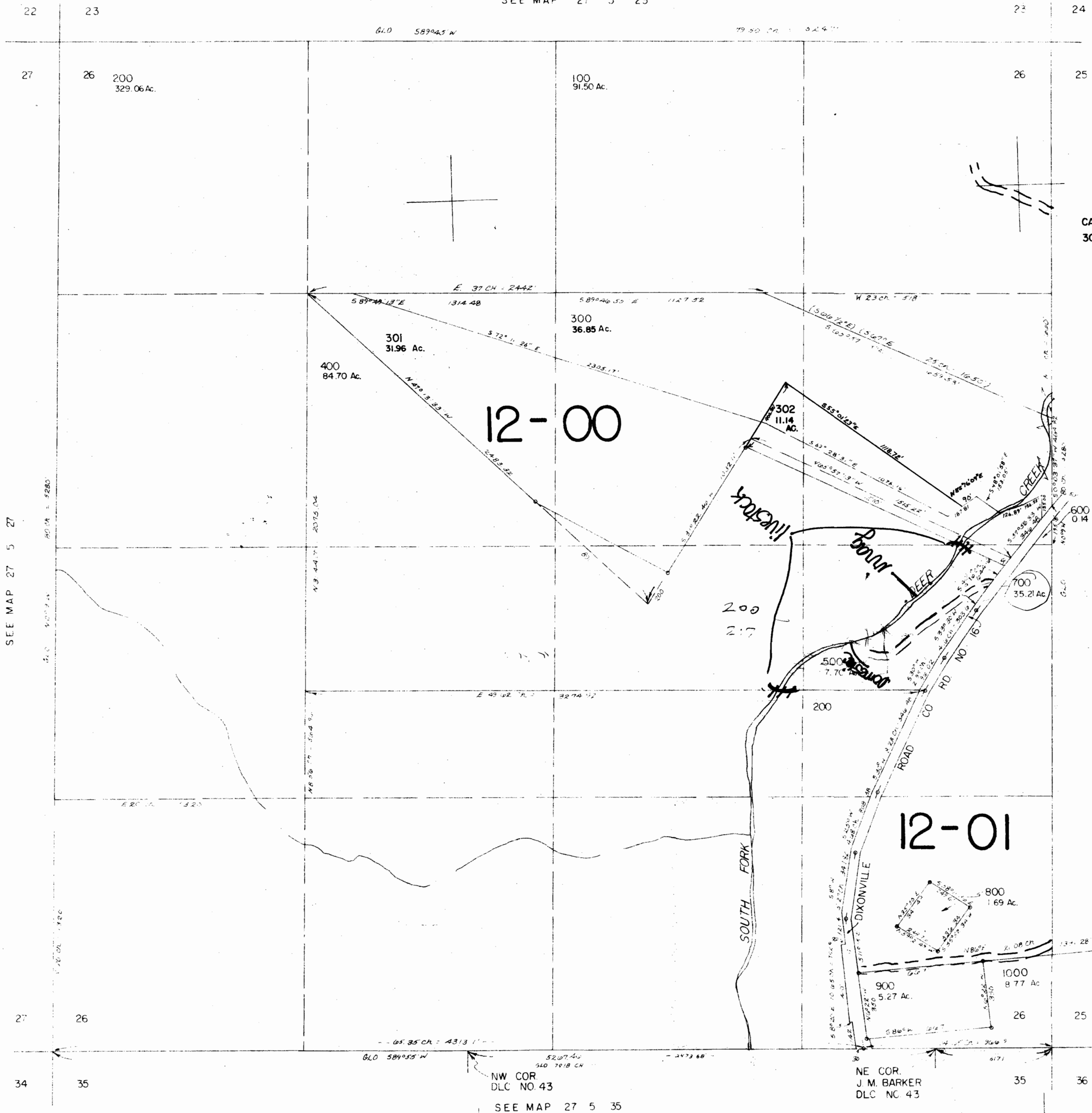
This map was prepared for assessment purpose only

SECTION 26 T.27S. R.5 W. W.M.
DOUGLAS COUNTY

REVISED ON
3-27-92

27 5 26

1" = 400'
SEE MAP 27 5 23



RECEIVED

JAN 04 1993
WATER RESOURCES DEPT.
SALEM, OREGON

CANCELLED NO'S
303

Domestic, irrag. /
livestock use
SEE MAP 27 5 25

570,00

565,00

27 5 26