

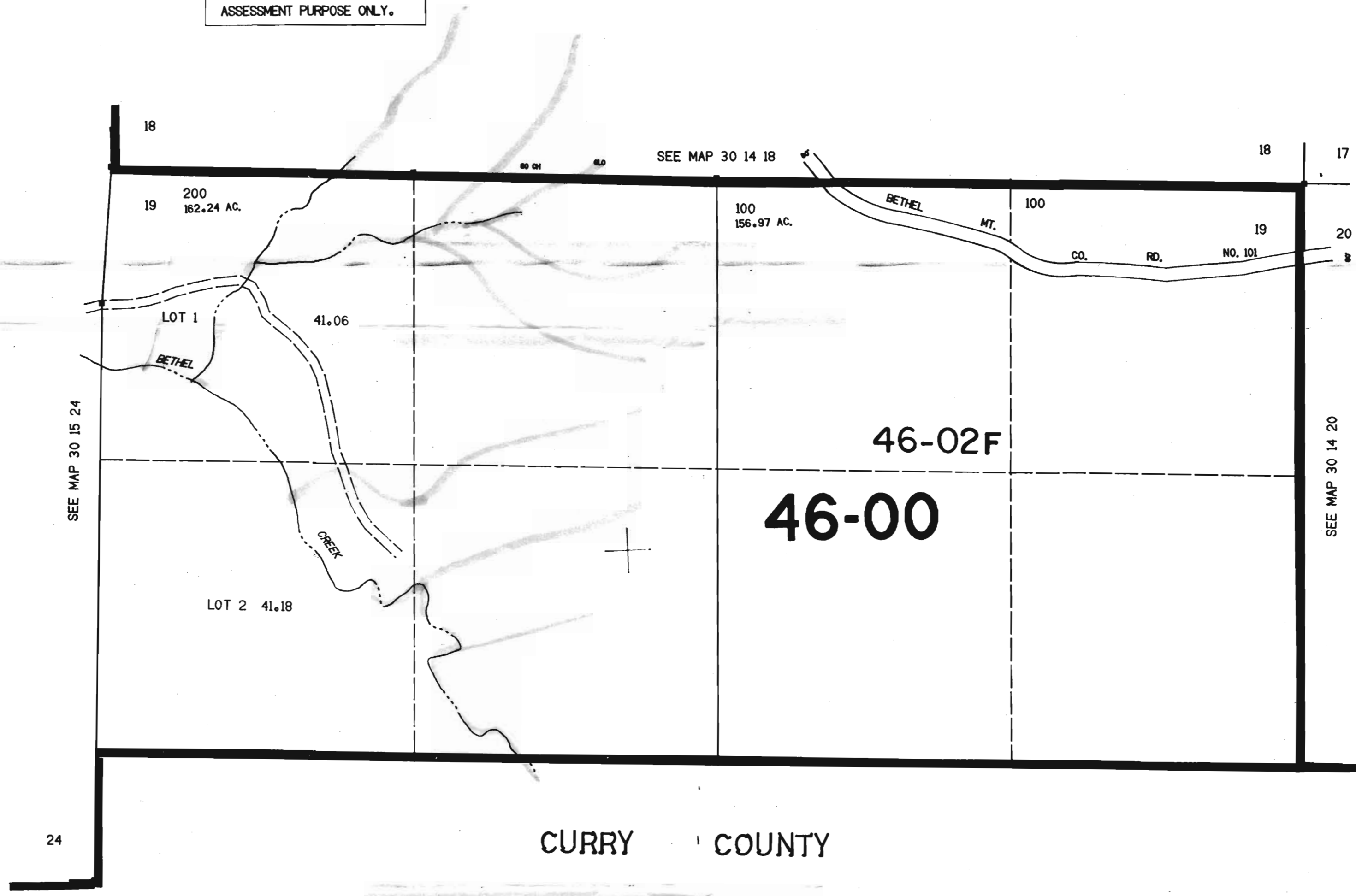
SECTION 19 T.30S. R.14W. W.M.  
COOS COUNTY

30 14 19

1"=400'

THIS MAP WAS PREPARED FOR  
ASSESSMENT PURPOSE ONLY.

RECEIVED  
JAN 05 1993  
WATER RESOURCES DEPT.  
SALEM, OREGON



CURRY COUNTY

CONTROL — LAYOUT — TRACED — CHECKED

30 14 19

3015.000

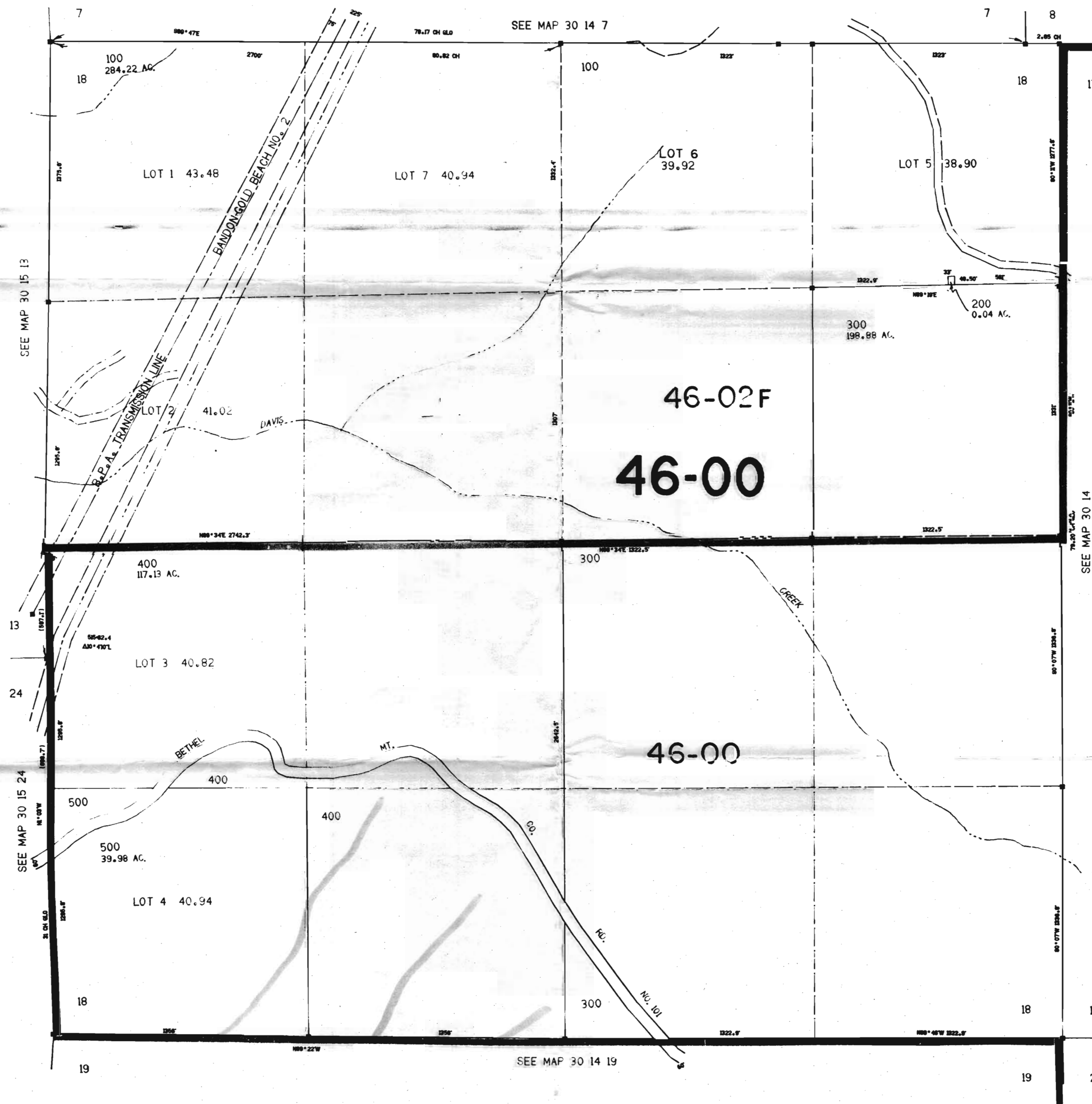
SECTION 18 T.30S. R.14W. W.M.  
COOS COUNTY

30 14 18

THIS MAP WAS PREPARED FOR  
ASSESSMENT PURPOSE ONLY.

1"=400'

CONTROL — LAYOUT — TRACED — CHECKED



CANCELLED  
5001 & U2

RECEIVED  
JAN 05 1933  
WATER RESOURCES DEPT.  
SALEM, OREGON

500.000

435,000

30 14 18