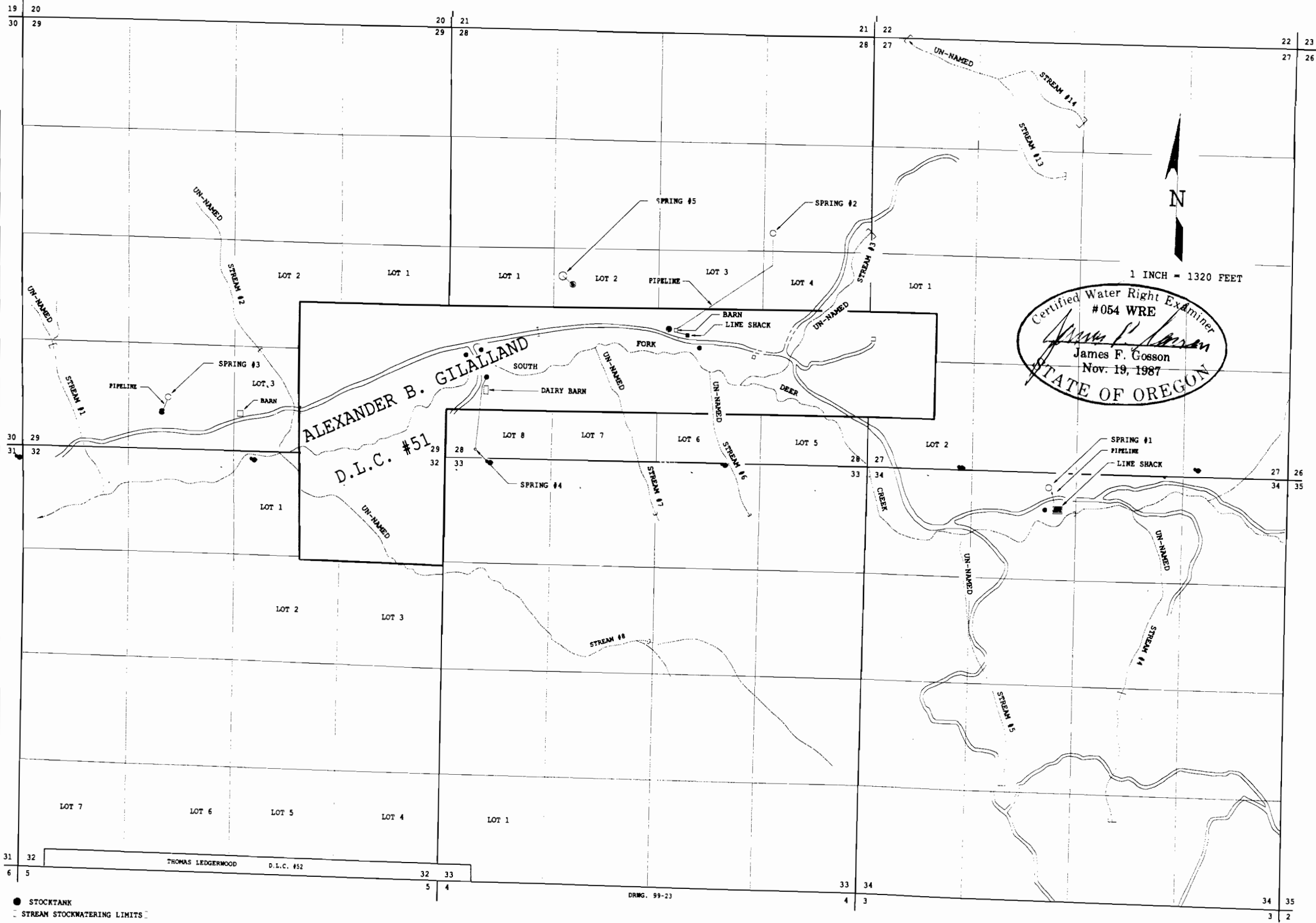
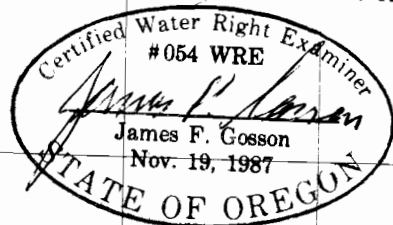


RECEIVED

NOV - 4 1999

WATER RIGHTS DIVISION  
ALLEN COUNTY DISTRICT

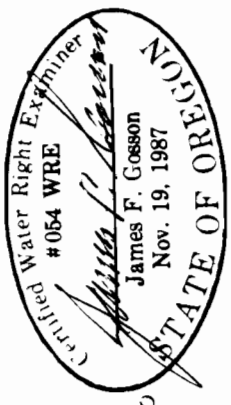
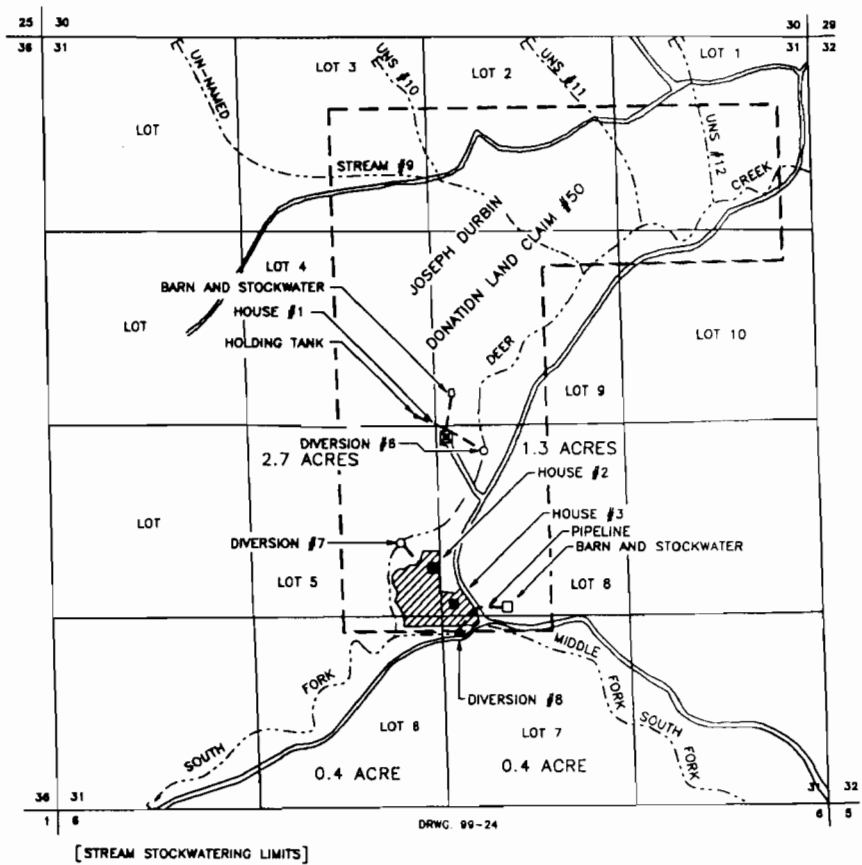
**SURFACE WATER REGISTRATION MAP**  
**IN THE NAME OF HATFIELD RANCH**  
 REGISTRATION 563  
 TOWNSHIP 27 SOUTH, RANGE 4 WEST, W.M.  
 MAP 1 OF 2



RECEIVED

SURFACE WATER REGISTRATION MAP  
 IN THE NAME OF HATFIELD RANCH  
 REGISTRATION 563  
 SECTION 31, TOWNSHIP 27 SOUTH, RANGE 4 WEST, W.M.  
 MAP 2 OF 2

AUG - 6 1987



SOURCE	DIVERSION #	FT. N/S	FT. E/W	FROM	LOCATION
S FORK DEER CR	6	2460' N	250' E	S 1/4 COR. S31	NW 1/4 SE 1/4 S31
S FORK DEER CR	7	1830' N	280' W	S 1/4 COR. S31	NE 1/4 SW 1/4 S31
M FORK S FORK DEER CREEK	8	1210' N	120' E	S 1/4 COR. S31	SW 1/4 SE 1/4 S31

THE PURPOSE OF THIS MAP IS TO IDENTIFY THE LOCATION OF THE WATER RIGHT. IT IS NOT INTENDED TO PROVIDE INFORMATION RELATIVE TO THE LOCATION OF PROPERTY OWNERSHIP BOUNDARY LINES.