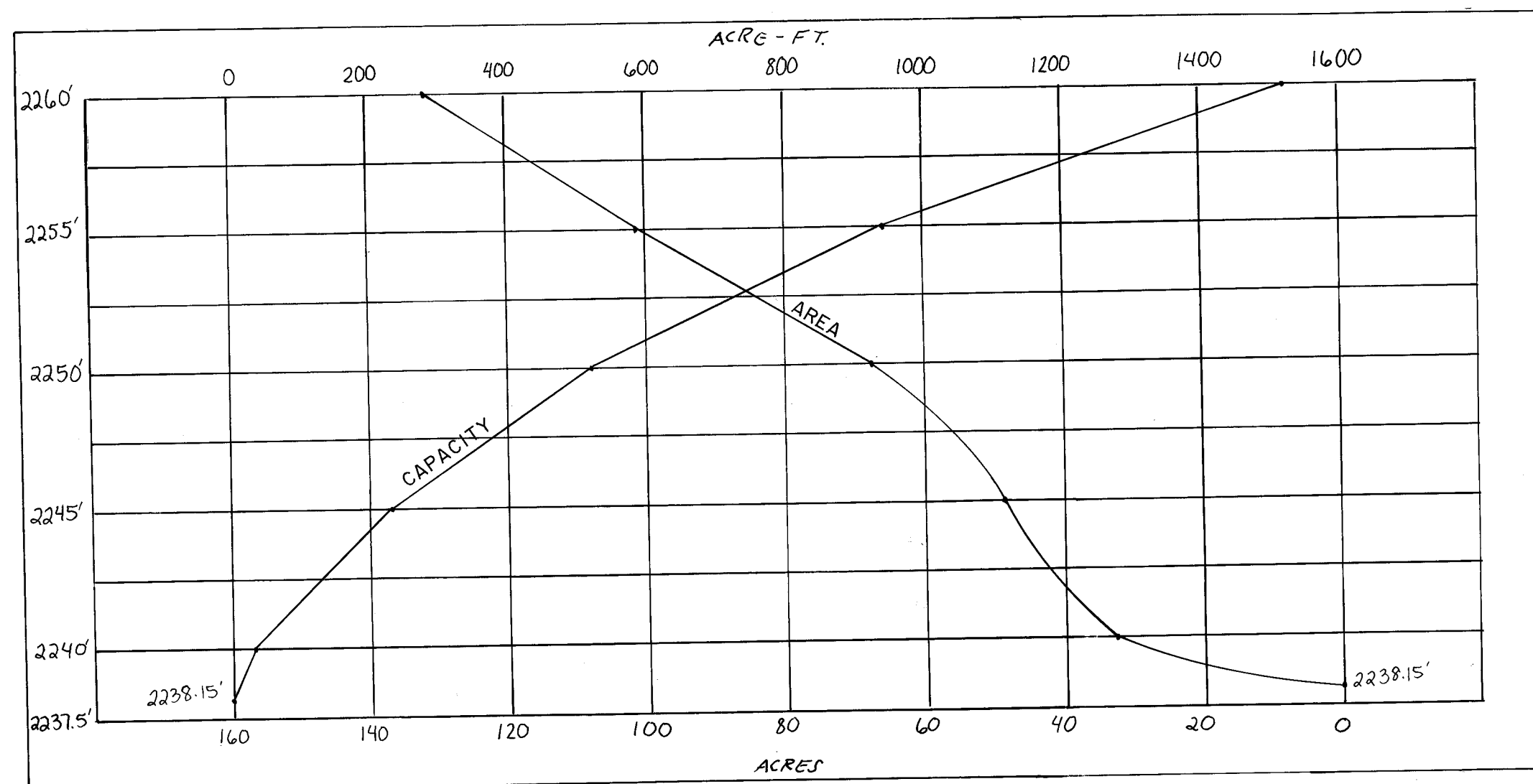
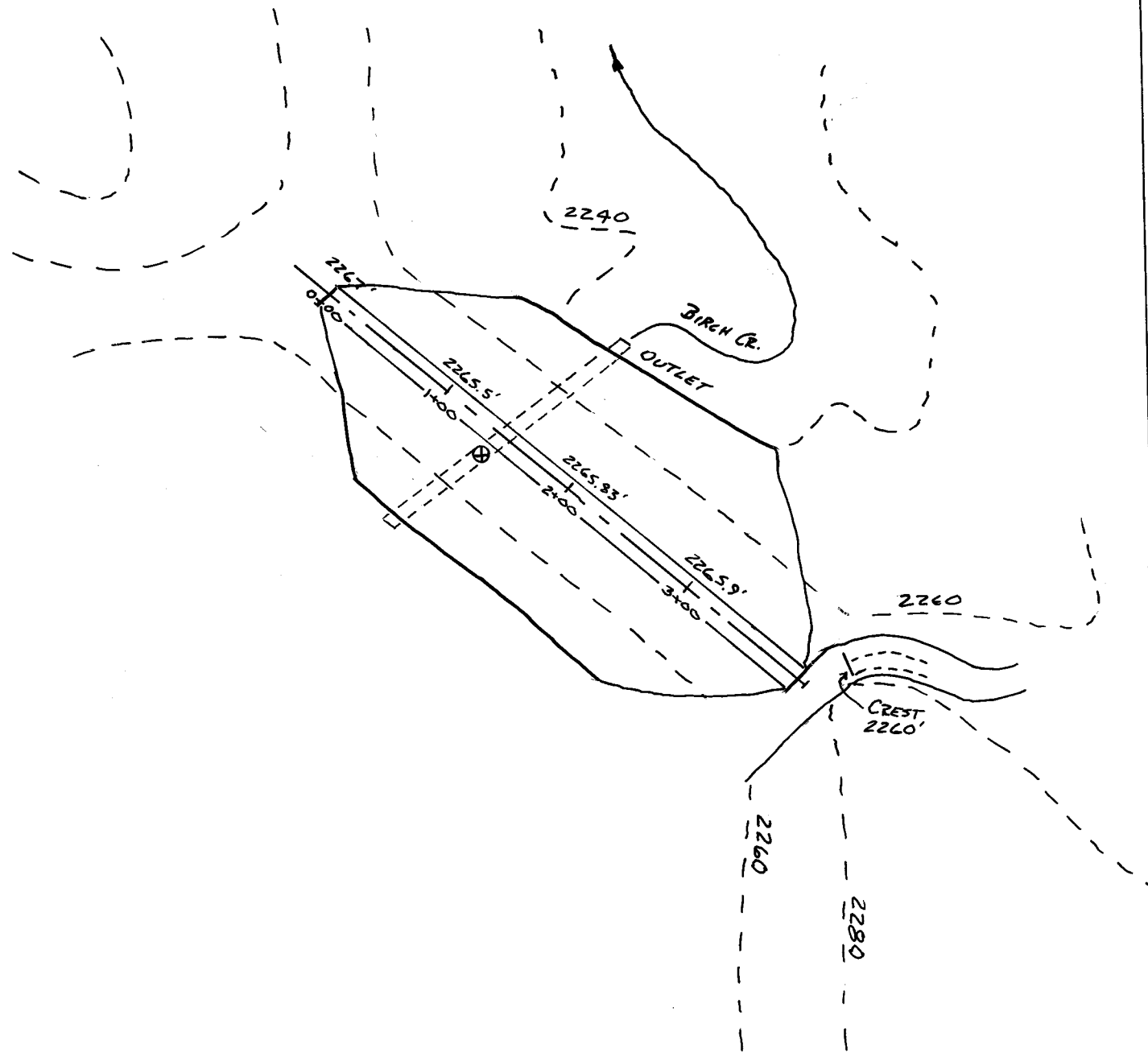


RECEIVED
 AUG 27 1998
 WATER RESOURCES DEPT
 SALMON REGION

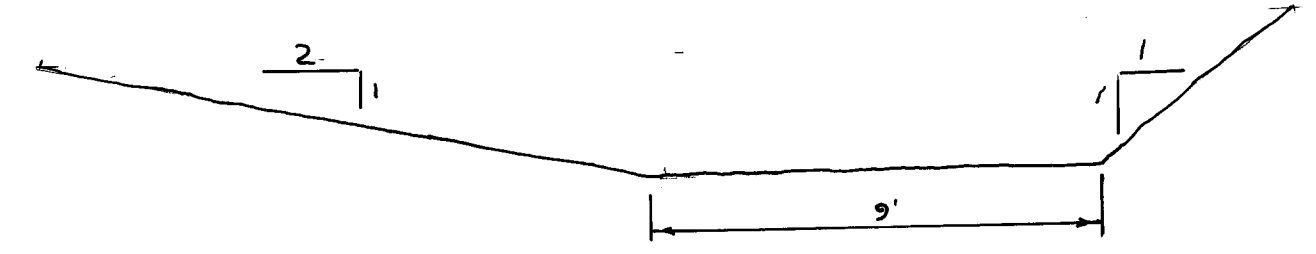
SWR-614
 SWR-617
 SWR-618



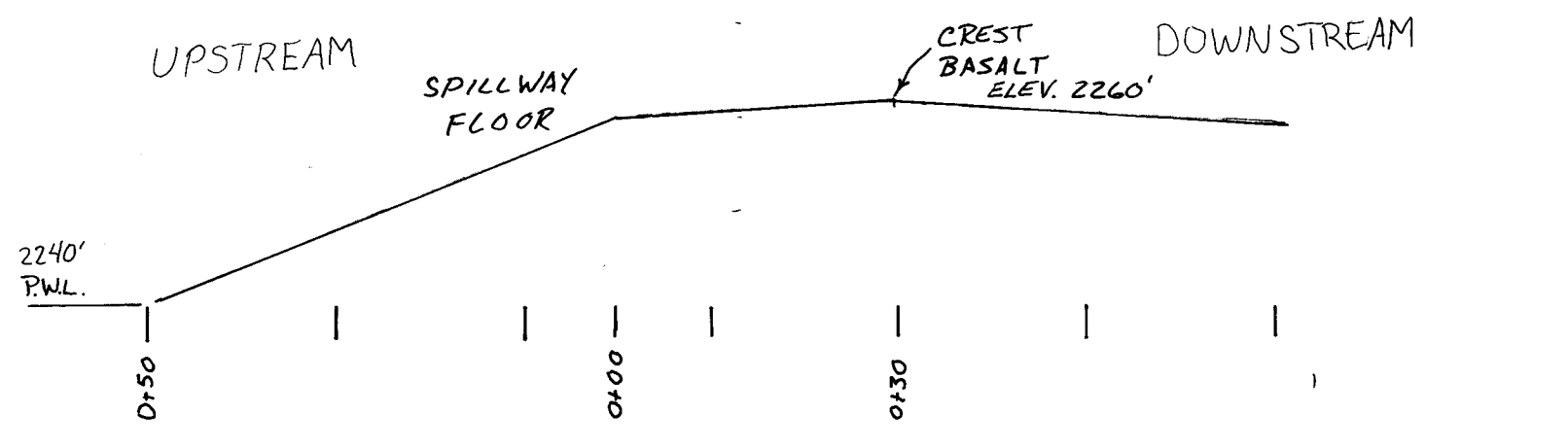
AREA-CAPACITY CURVES



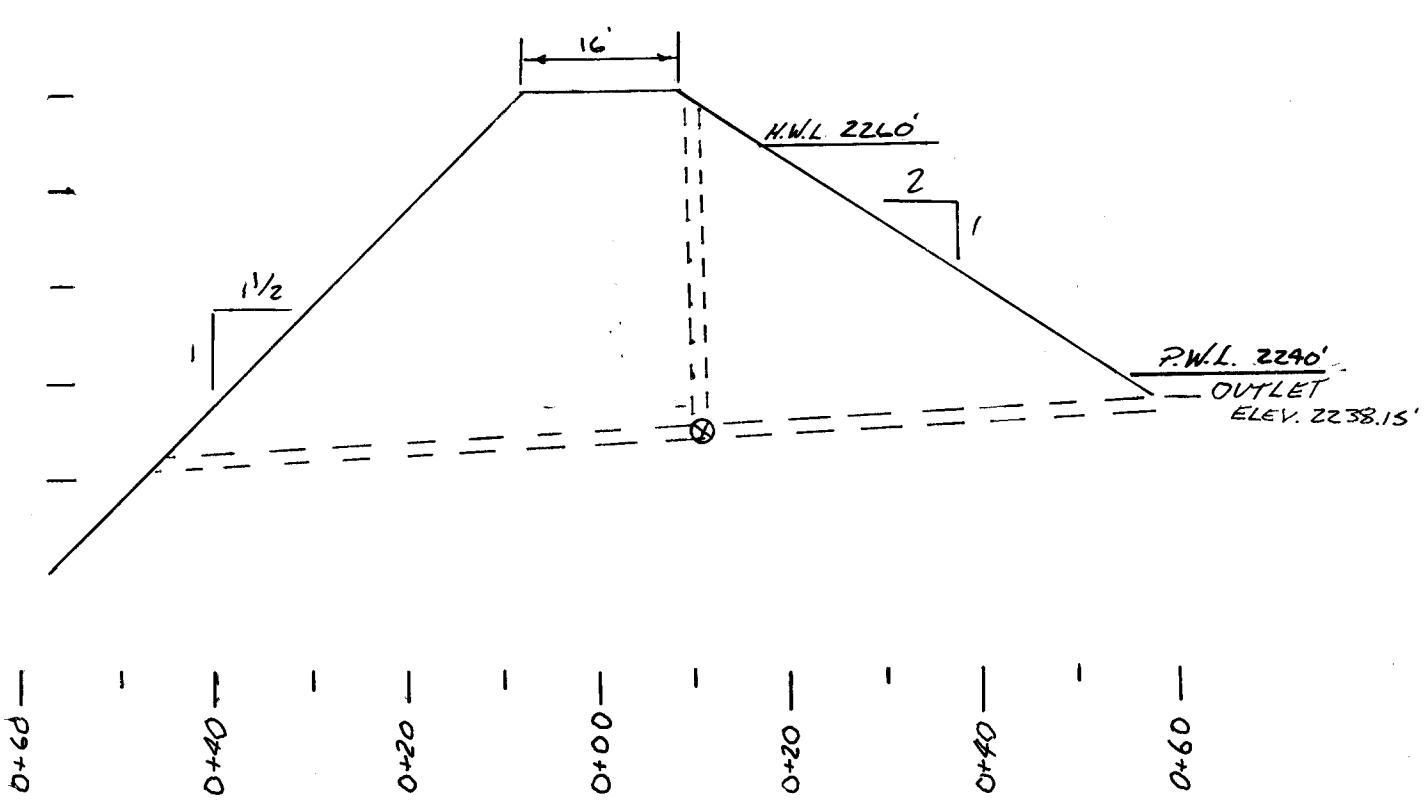
DAM & SPILLWAY PLAN
 SCALE: 1" = 100'



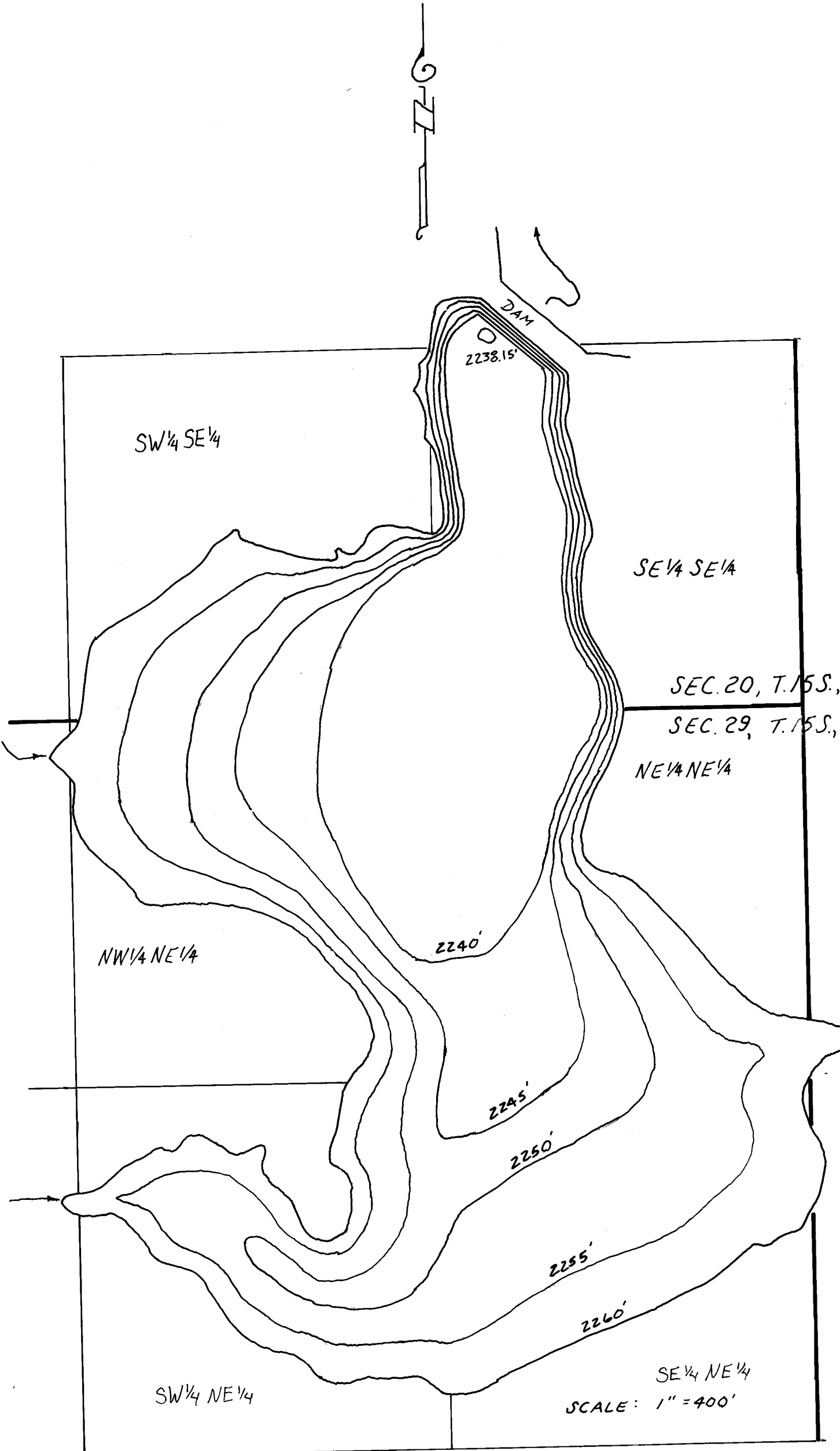
SPILLWAY CROSS SECTION @ CREST
 LOOKING DOWNSTREAM
 CREST ELEV. 2260'



SPILLWAY PROFILE



DAM CROSS SECTION



LOVE RESERVOIR
 AS-BUILT

DRAWN FROM SURVEY AND AERIAL PHOTOS

SCALES AS SHOWN
 AUGUST, 1998

BY:
 HANLEY ENGINEERING, INC.
 2043 MAIN STREET
 BAKER CITY, OREGON

