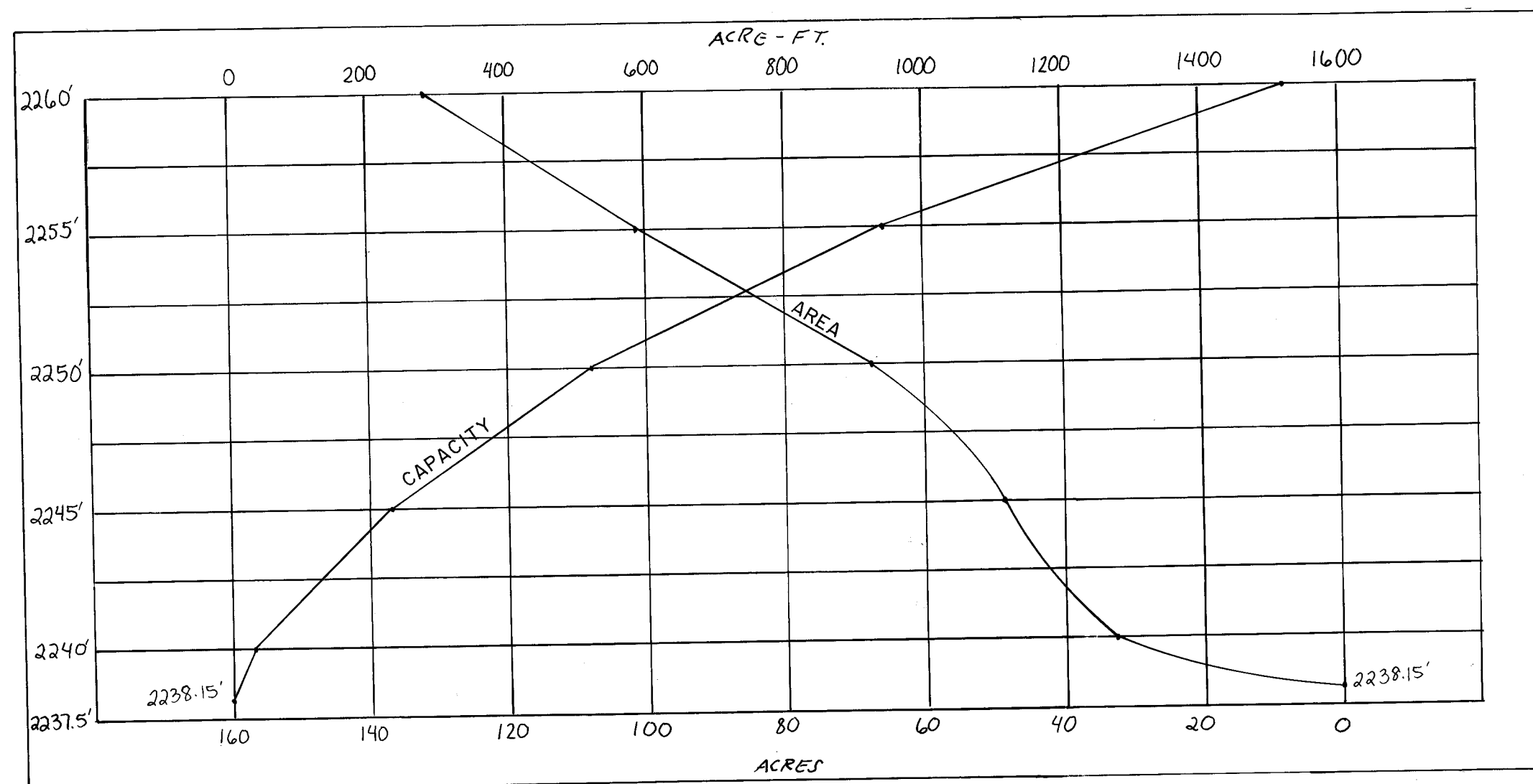


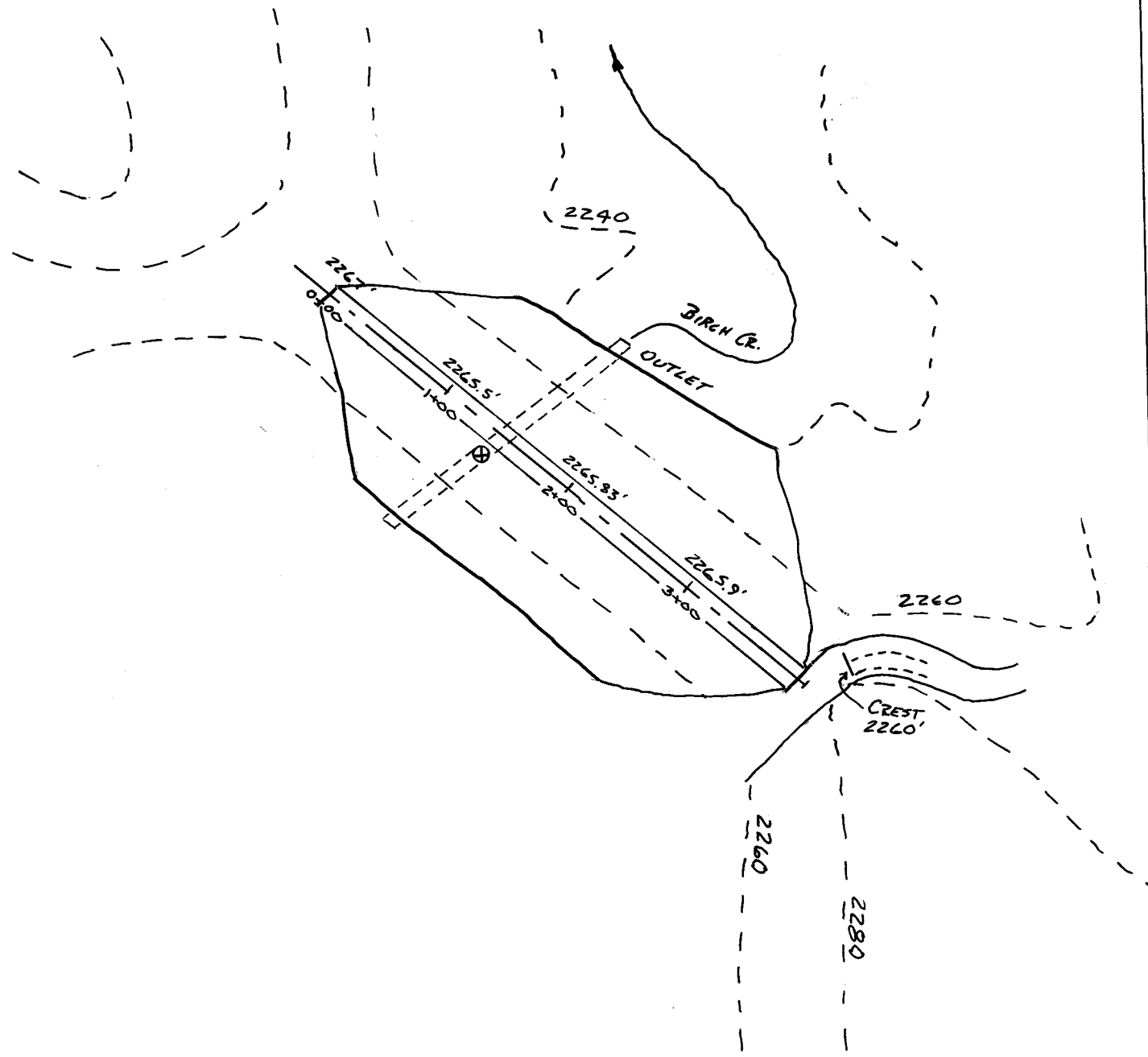


RECEIVED  
 AUG 27 1998  
 WATER RESOURCES DEPT  
 SALMON REGION

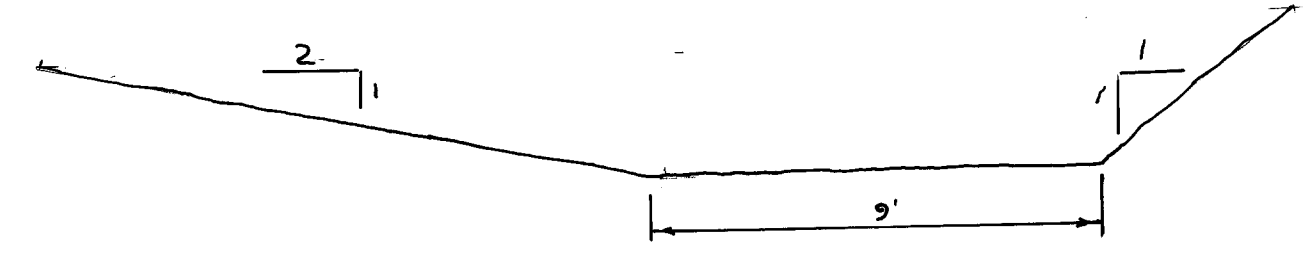
SWR-614  
 SWR-617  
 SWR-618



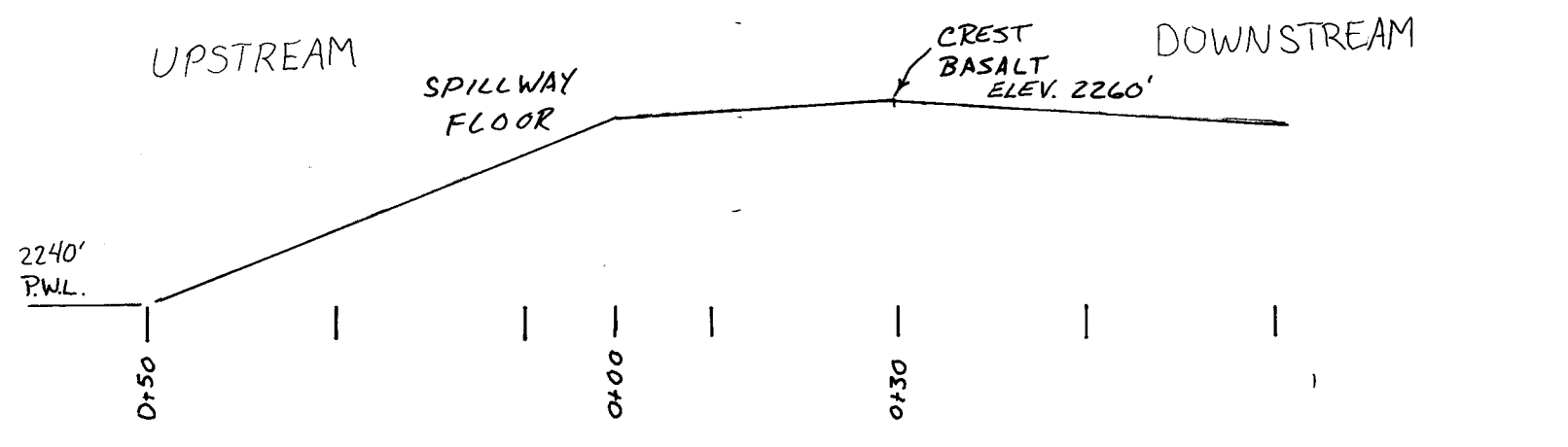
AREA-CAPACITY CURVES



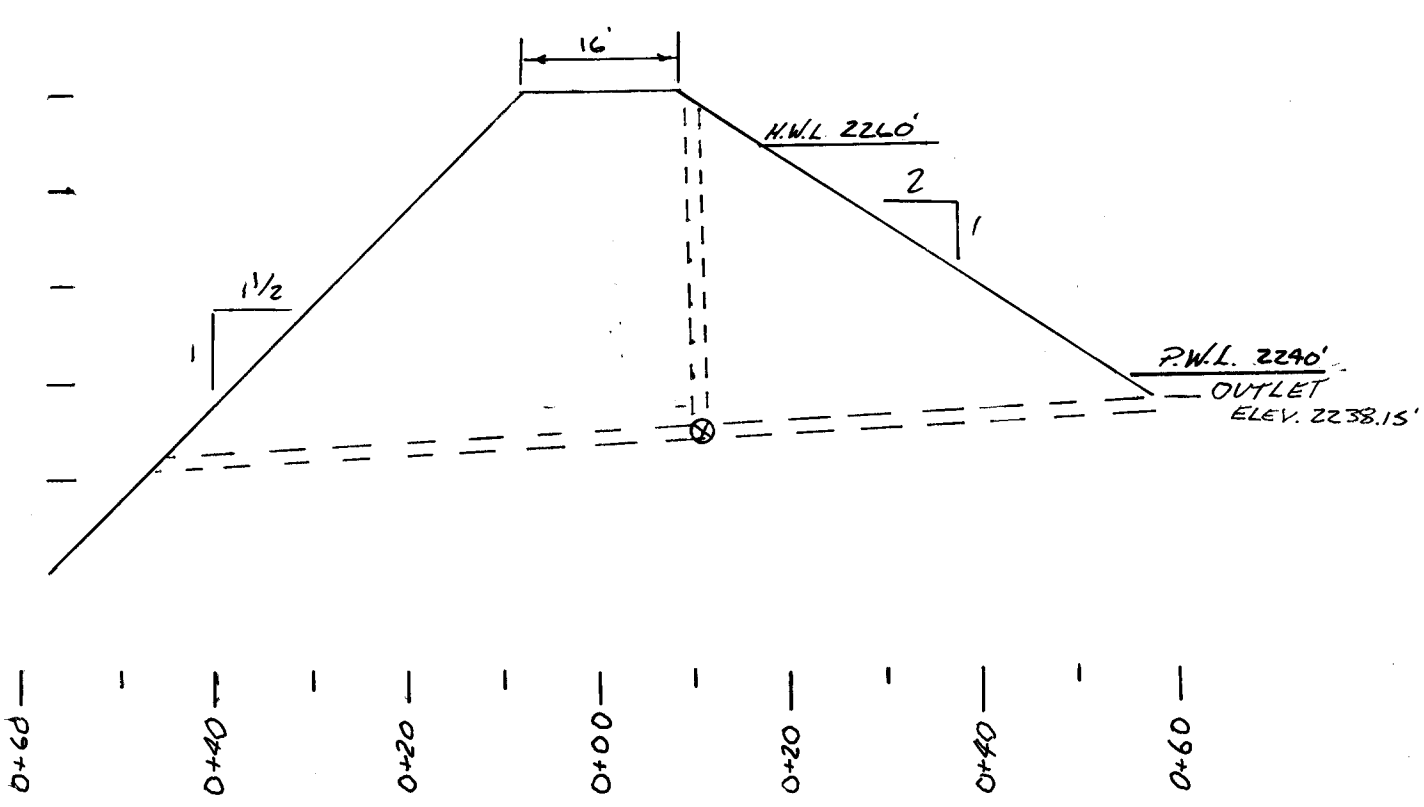
DAM & SPILLWAY PLAN  
 SCALE: 1" = 100'



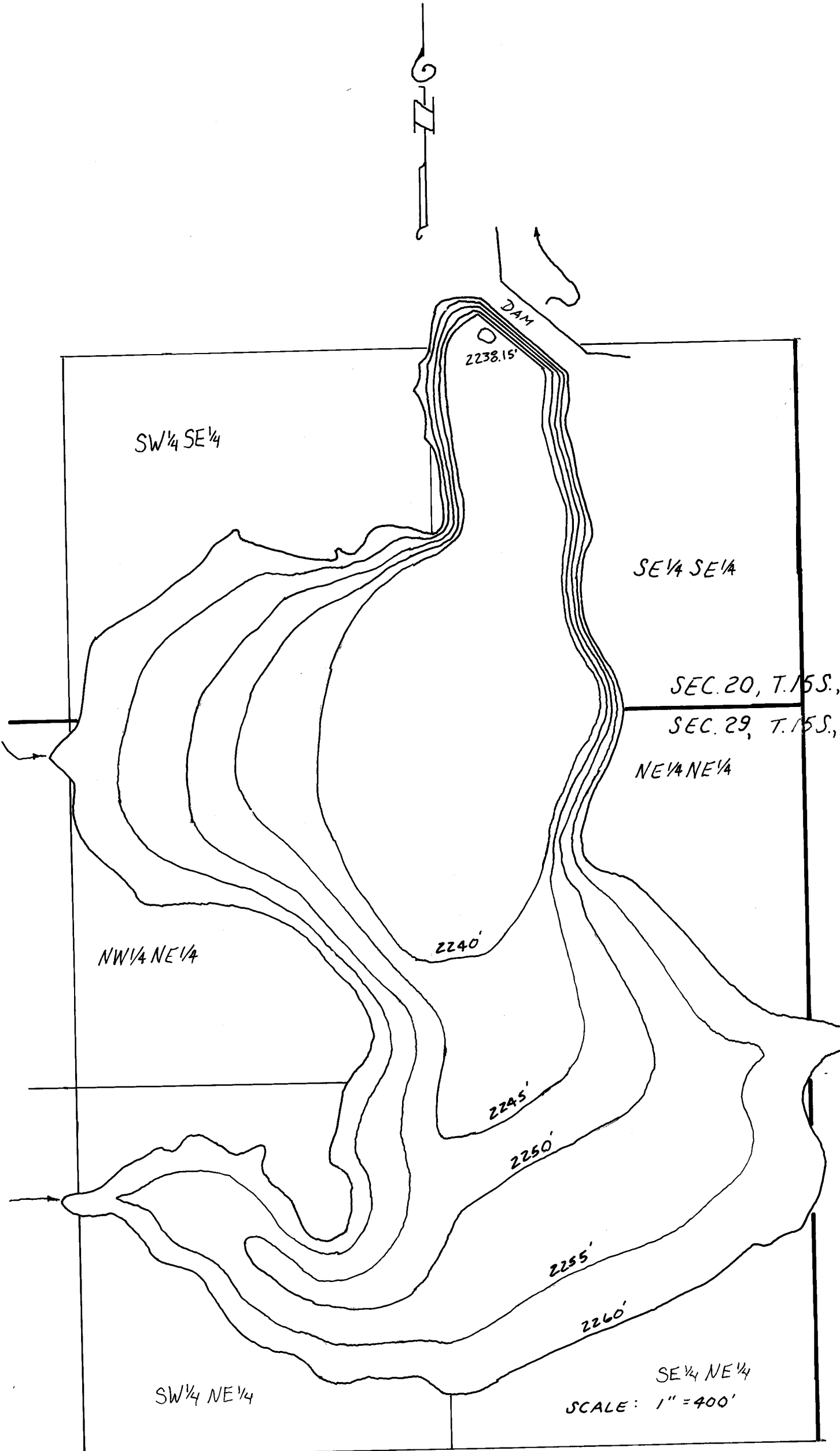
SPILLWAY CROSS SECTION @ CREST  
 LOOKING DOWNSTREAM  
 CREST ELEV. 2260'



SPILLWAY PROFILE



DAM CROSS SECTION



LOVE RESERVOIR  
 AS-BUILT  
 DRAWN FROM SURVEY AND AERIAL PHOTOS  
 SCALES AS SHOWN  
 AUGUST, 1998

BY:  
 HANLEY ENGINEERING, INC.  
 2043 MAIN STREET  
 BAKER CITY, OREGON

