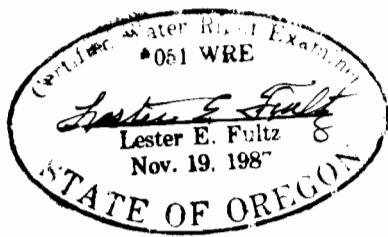
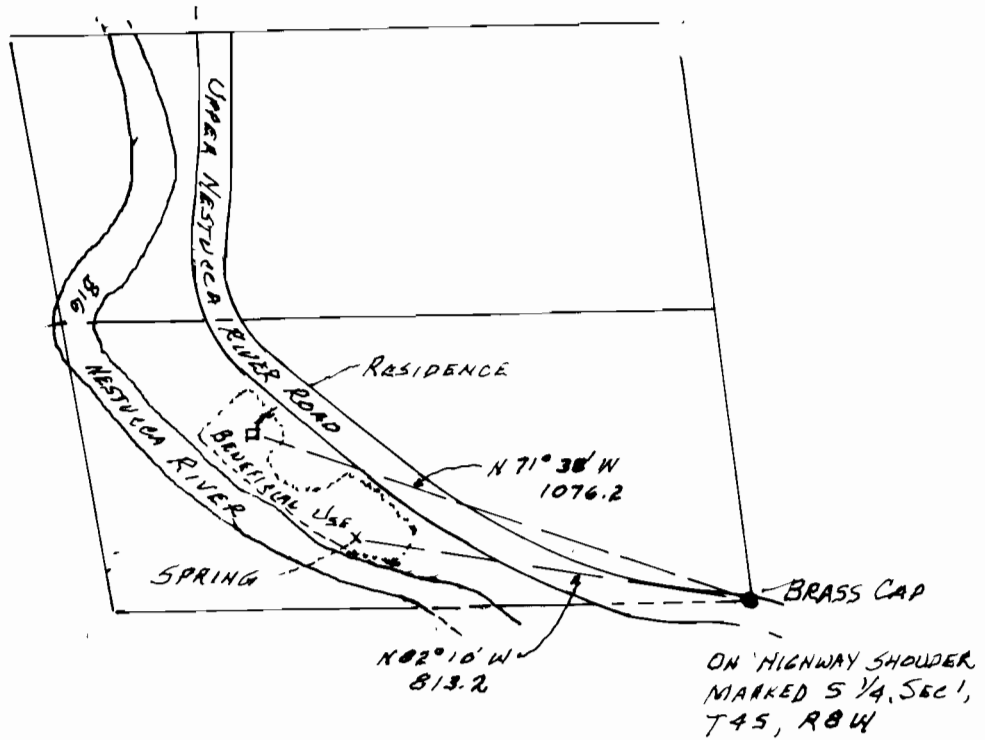
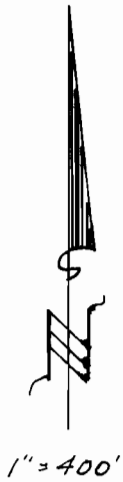


FINAL PROOF SURVEY MAP

A DRAWING PREPARED TO ACCOMPANY A REGISTRATION STATEMENT OF CLAIM OF BENEFICIAL USE BY LES & PAT HELGESON.



PRESSURE - 40 PSI
TAP OPENING - 3/4-INCH

CERTIFICATE:

THE FINAL PROOF SURVEY AND INSPECTION OF THE USE WAS FOUND TO BE COMPLETED ESSENTIALLY AS USED PRIOR TO 1909. THE SPRING HAD BEEN IMPROVED BY CONSTRUCTION OF STREAM ROCK AND MORTAR. THE SPRING SUPPLIED WATER BY GRAVITY INITIALLY. THE SPRING WATER HAS NOW BEEN PRESSURIZED BY AN ELECTRIC PUMP AND SURCHARGED WATER TANK.

THE WATER SYSTEM WAS INSPECTED BY ME ON 13 MAY 1992 AND THE FACTS CONTAINED ON THIS FINAL PROOF SURVEY AND THE WRITTEN FINAL PROOF STATEMENT ARE CORRECT TO THE BEST OF MY KNOWLEDGE.

L. E. FULTZ
1 NOV 92