

IN THE COUNTY COURT FOR GILLIAM COUNTY, OREGON

RESOLUTION NO. R2023-10

A RESOLUTION DECLARING A STATE OF DROUGHT EMERGENCY

THIS MATTER, coming before the County Court for Gilliam County, sitting as the governing body, at a regularly scheduled meeting on this 5th day of July 2023; and

WHEREAS, the total precipitation for the area is significantly below average; and

WHEREAS, Gilliam County will be faced with the effects of ongoing drought conditions that will impact crop health, reduce upland grass production, reduce spring flows, and result in extremely low surface water levels; and

WHEREAS, 30.28% of Gilliam County is currently in a D0 drought (Abnormally Dry), 32.52% is in D1 Drought (Moderate Drought), and 7.02% is in D2 drought (Severe Drought), according to the U.S. Drought Monitor; and

WHEREAS, the U.S. Seasonal Drought Outlook for June 15- September 30, 2023 expects the drought to persist.

NOW, THEREFORE, the Gilliam County Court hereby resolves as follows:

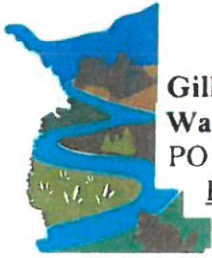
- (1) The Gilliam County Court declares that a state of drought emergency exists within Gilliam County; and
- (2) The Gilliam County Court respectfully requests that Governor Tina Kotek declare a state of drought emergency for Gilliam County and request the United States Secretaries of Interior and Agriculture issue a Drought Disaster Declaration for Gilliam County.

ADOPTED by the Gilliam County Court this 5th day of July 2023.


Elizabeth A. Farrar Campbell, County Judge

ATTEST:


Miranda Rees, Recording Secretary



**Gilliam County Soil and
Water Conservation District**

PO Box 106, 234 S. Main St. Condon, OR 97823

Phone (541) 384-2672 <https://www.gilliamcountyswcd.com>

June 21, 2023

Gilliam County Court
221 S. Oregon St.
P.O. Box 427
Condon, OR 97823

To the
Honorable Elizabeth Farrar
And
Commissioners of Gilliam County

The Gilliam County Soil and Water Conservation District formally request that the Gilliam County Court consider and approve an emergency declaration of drought for Gilliam County. In coordination with the Gilliam County Emergency Management Department, we request that the Gilliam County Court pursue the necessary steps to attain an emergency drought declaration from the Governor's office. The following points are our request basis, as are the attached documents:

- Over 30.28% of Gilliam County is currently in a D0 drought (Abnormally Dry), 32.52% of the County is in D1 drought (Moderate Drought), and 7.02% in D2 (Severe Drought) according to the U.S. Drought Monitor.
- The U.S. Seasonal Drought Outlook for June 15 – September 30, 2023 expects the drought to persist.
- Only 7.14 inches of rain has fallen for the current water year in Condon.
- The John Day River is currently 820 cfs below the average cfs for this time of year.

Throughout Gilliam County, the effects of the ongoing drought conditions will affect crop health, reduce upland grass production, reduce spring flows, and result in extremely low surface water levels. A county declaration of drought emergency is the first step in receiving the declaration from the Governor. We need the Governor's declaration to allow our local producers access to State and Federal drought assistance programs.

Please feel free to contact me with any questions.

Sincerely,

Herb Winters
District Manager



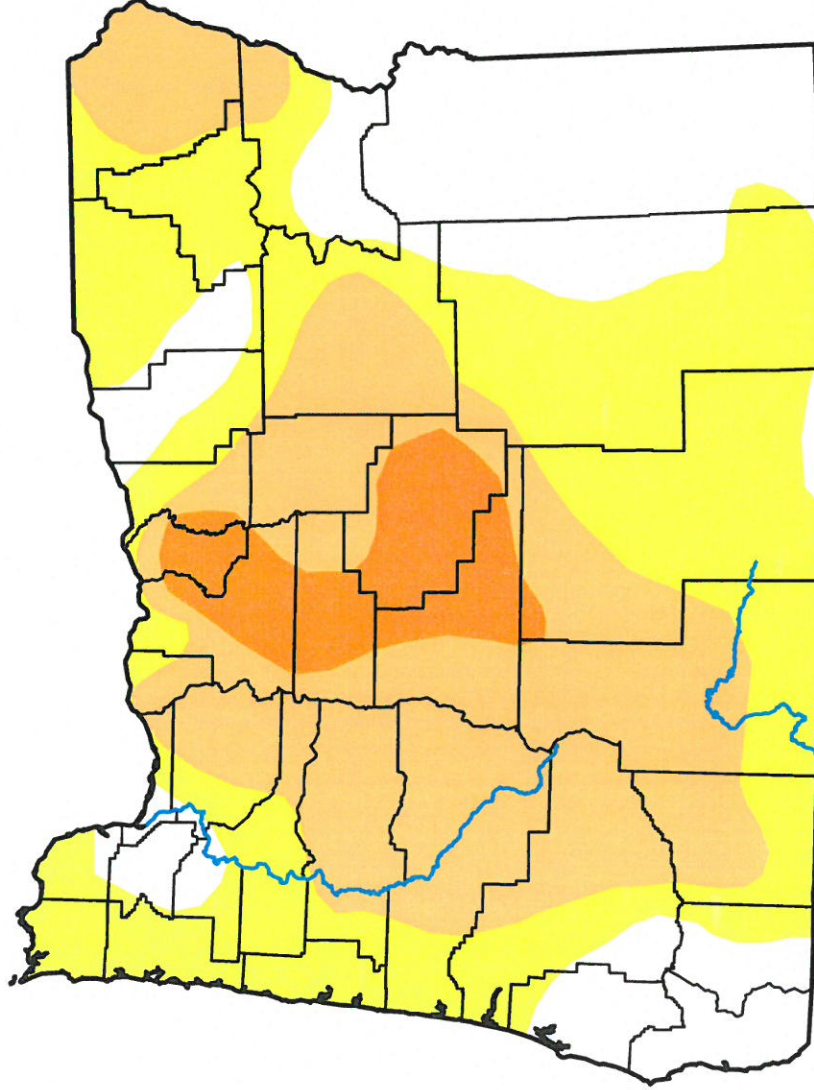
U.S. Drought Monitor

Oregon

June 13, 2023

(Released Thursday, Jun. 15, 2023)

Valid 8 a.m. EDT



Drought Conditions (Percent Area)

	None	D0-D4	D1-D4	D2-D4	D3-D4	D4
Current	23.16	76.84	39.54	7.02	0.00	0.00
Last Week 06-06-2023	15.92	84.08	42.57	9.37	0.00	0.00
3 Months Ago 03-14-2023	8.28	91.72	77.32	37.70	13.51	1.40
Start of Calendar Year 01-03-2023	13.46	86.54	59.75	46.03	26.18	1.40
Start of Water Year 09-27-2022	0.42	99.58	68.05	52.42	30.73	1.40
One Year Ago 06-14-2022	24.25	75.75	67.93	56.72	40.06	1.93

Intensity:

- None
- D0 Abnormally Dry
- D1 Moderate Drought
- D2 Severe Drought
- D3 Extreme Drought
- D4 Exceptional Drought

The Drought Monitor focuses on broad-scale conditions. Local conditions may vary. For more information on the Drought Monitor, go to <https://droughtmonitor.unl.edu/About.aspx>

Author:

Adam Hartman
NOAA/NWS/NCEP/CPC

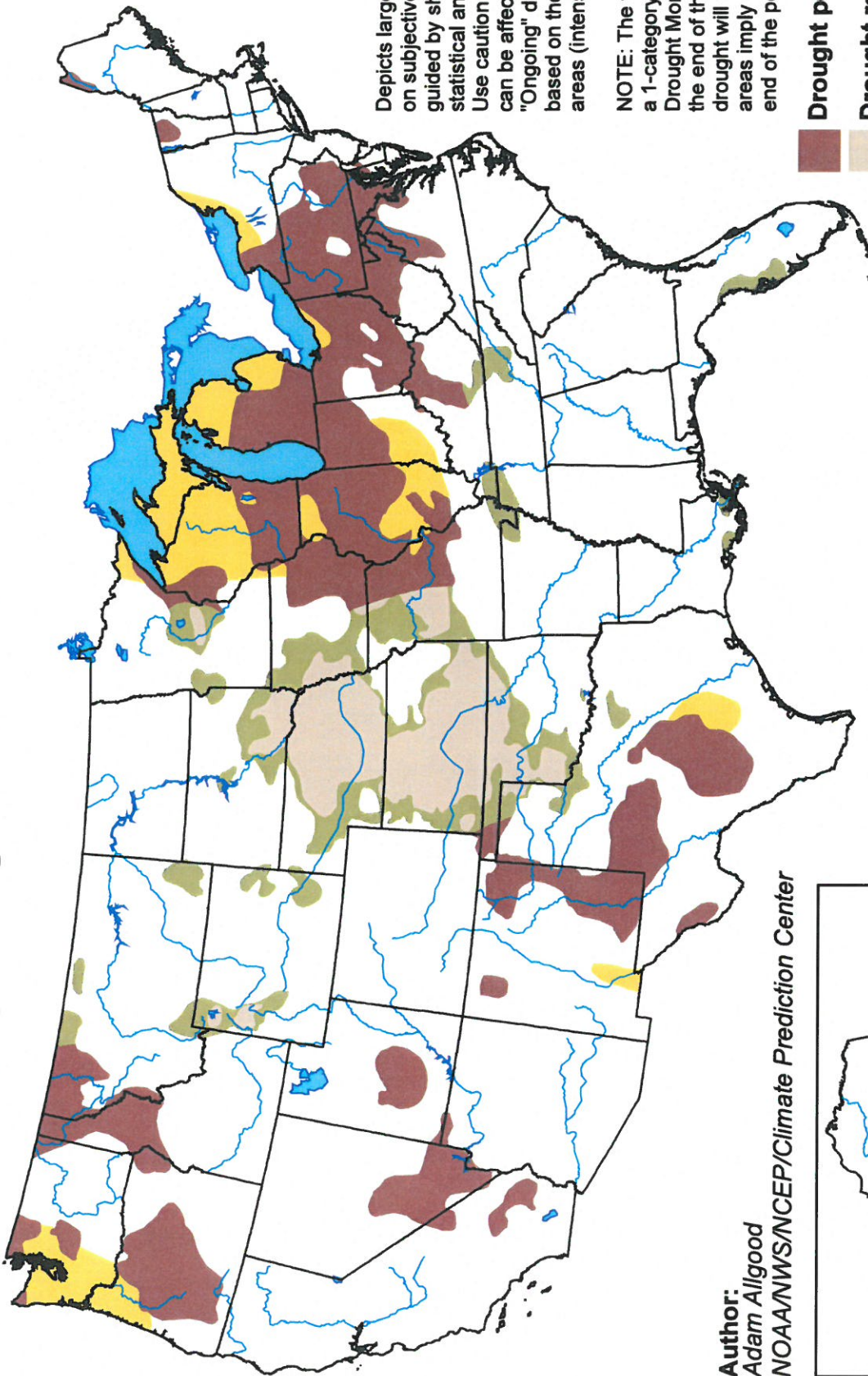


droughtmonitor.unl.edu

U.S. Seasonal Drought Outlook

Drought Tendency During the Valid Period

Valid for June 15 - September 30, 2023
Released June 15

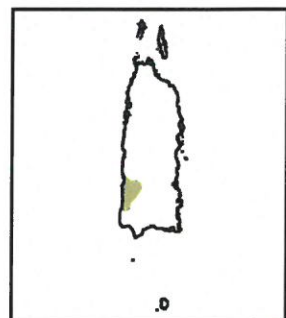
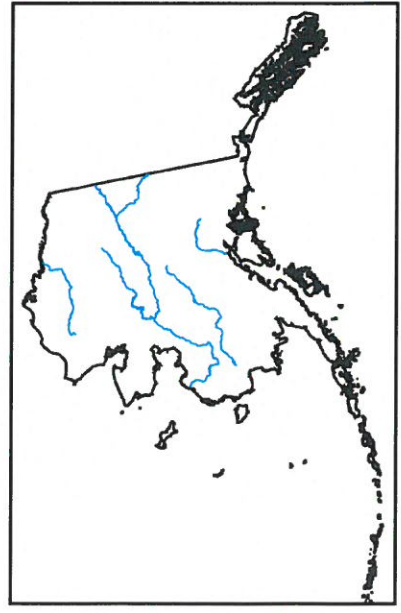


Depicts large-scale trends based on subjectively derived probabilities guided by short- and long-range statistical and dynamical forecasts. Use caution for applications that can be affected by short lived events. "Ongoing" drought areas are based on the U.S. Drought Monitor areas (intensities of D1 to D4).

NOTE: The tan areas imply at least a 1-category improvement in the Drought Monitor intensity levels by the end of the period, although drought will remain. The green areas imply drought removal by the end of the period (D0 or none).

-  Drought persists
-  Drought remains but improves
-  Drought removal likely
-  Drought development likely

Author:
Adam Allgood
NOAA/NWS/NCEP/Climate Prediction Center

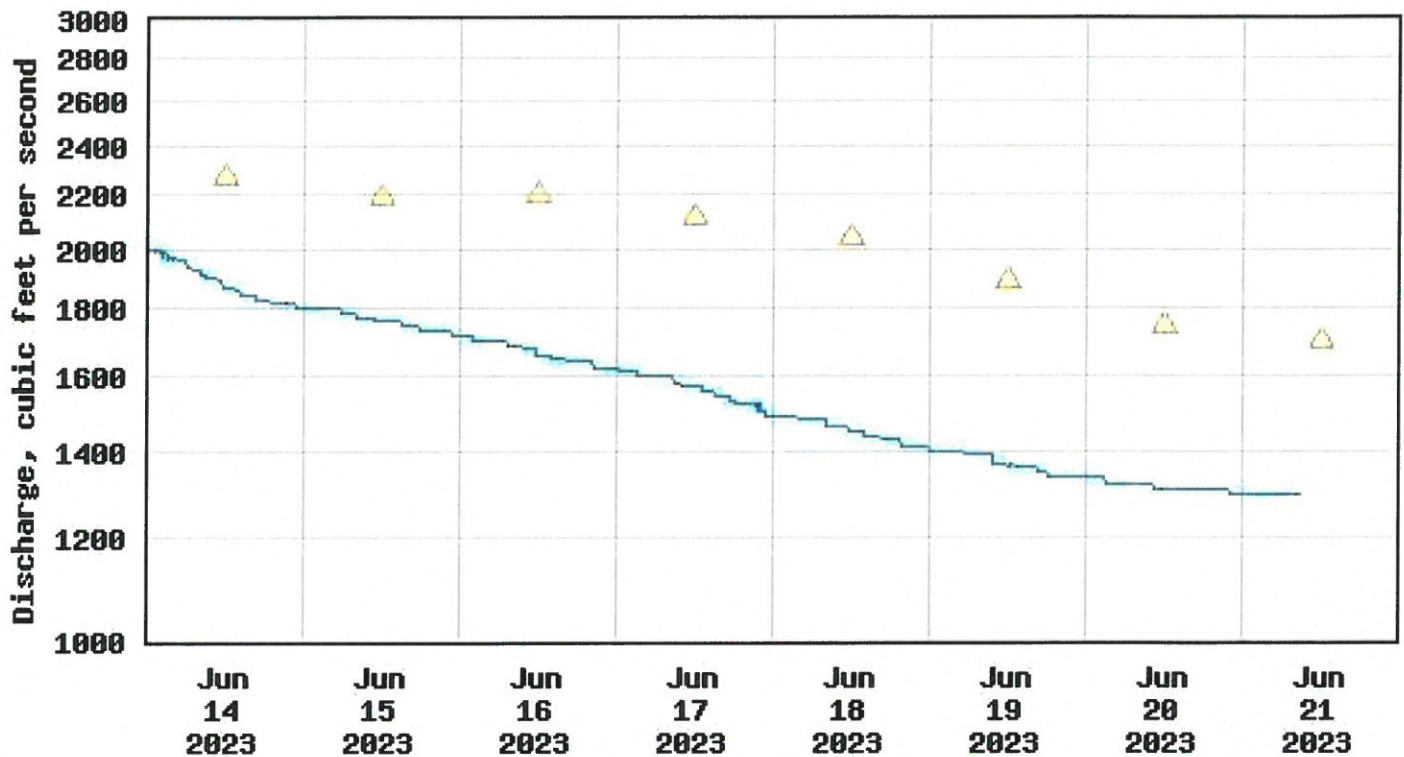


<http://go.usa.gov/3eZ73>

Discharge, cubic feet per second

Most recent instantaneous value: 1300 06-21-2023 08:45 PDT

USGS 14048000 JOHN DAY RIVER AT MCDONALD FERRY, OR



----- Provisional Data Subject to Revision -----

△ Median daily statistic (116 years) — Discharge

Create [presentation-quality](#) / [stand-alone](#) graph. Subscribe to [WaterAlert](#)

See this graph on the [Monitoring Location Pages](#)

[+ Share this graph](#) | [f](#) [t](#) [s](#) [e](#)

Daily discharge, cubic feet per second -- statistics for Jun 21 based on 116 water years of record [more](#)

Min (1926)	25th percentile	Most Recent Instantaneous Value Jun 21	Median	Mean	75th percentile	Max (1948)
246	970	1300	1700	2120	2800	8680