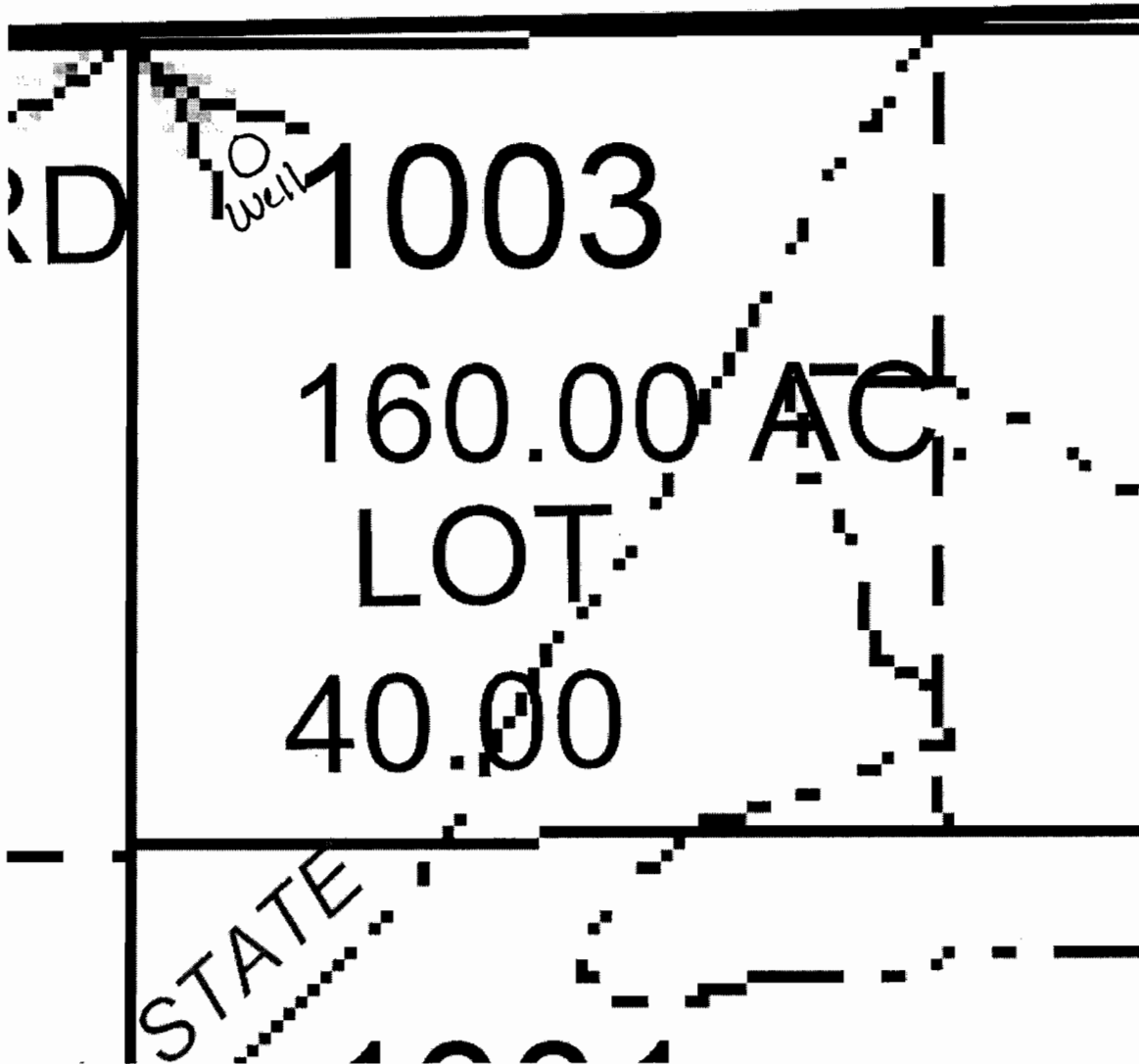


EXEMPT USE WELL LOCATION MAP



Harney County

Assessor Map Reference Number: 26S 31E 5 NWNW; Tax Lot 1003

Street Address of Well, if Available: 30040 Weaver Springs Road, Burns OR.

Well Log # HARN 51693, Well Label (ID Tag) # L 101624. (Please Locate Well and Indicate distance From Property or Survey Corner, See Attached Sample Well Location Map.) You may also locate your well using our exempt use well mapping tool on our website at www.wrd.state.or.us/exempt_use_788_info.shtml or by contacting the Exempt Use Well Program Coordinator at 503 986-0861.

PAPER MAP NOT TO SCALE

RECEIVED

APR 14 2010

WATER RESOURCES DEPT
SALEM, OREGON