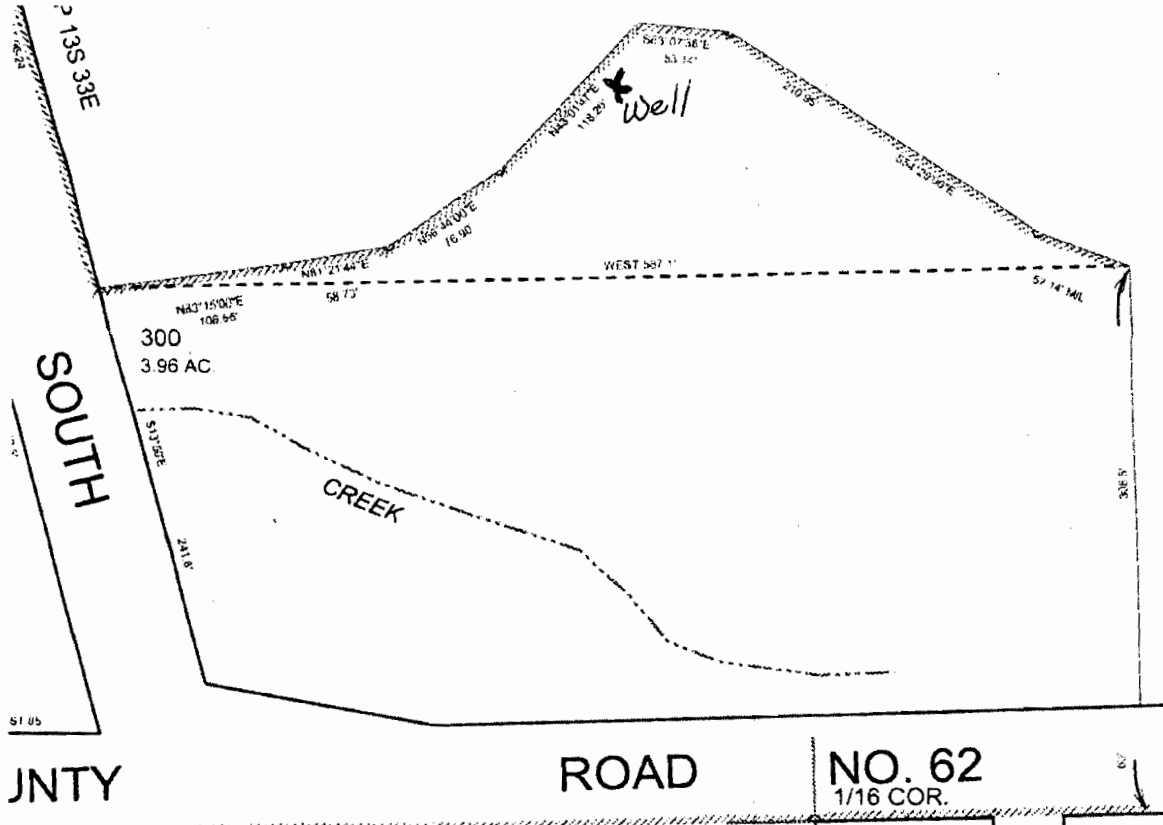


EXEMPT USE WELL LOCATION MAP



RECEIVED

FEB 04 2011

WATER RESOURCES DEPT
SALEM, OREGON

Grant County

Assessor Map Reference Number: 13S 33E 11 NENW; Tax Lot 300

Street Address of Well, if Available: 425 S Main, Prairie City, OR.

Well Log # GRAN 51033. Well Label (ID Tag) # L 103004. (Please Locate Well and Indicate distance From Property or Survey Corner, See Attached Sample Well Location Map.) You may also locate your well using our exempt use well mapping tool on our website at www.wrd.state.or.us/OWRD/exempt_use_788_info.shtml or by contacting the Exempt Use Well Program Coordinator at 503 986-0861.

MAP NOT TO SCALE

GRANT COUNTY
GRAN 51033
INV 3308
SC 197304

RECEIVED

SEP 15 2011

WATER RESOURCES DEPT
SALEM, OREGON