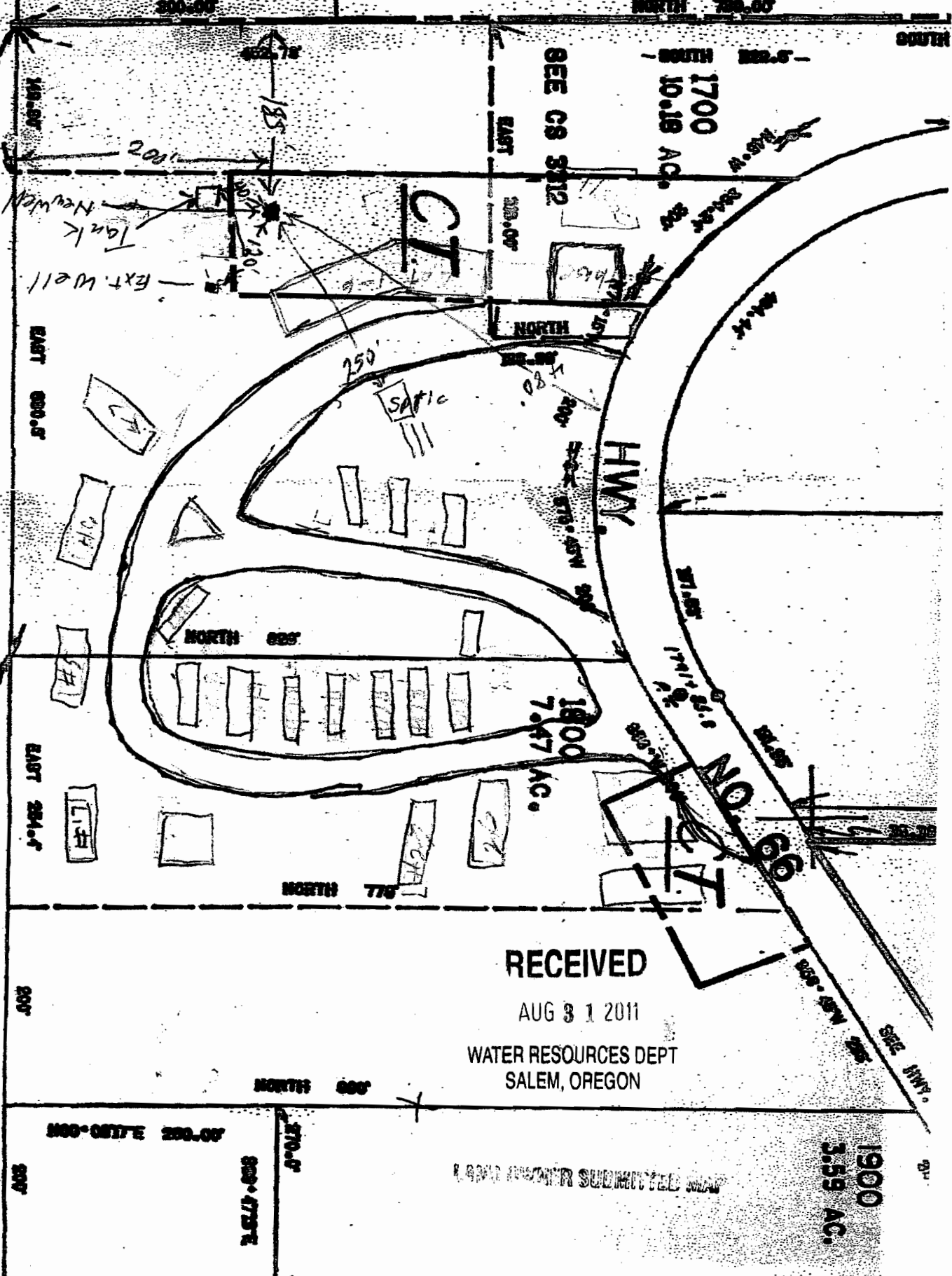


KLAM 57831

SEE MAP 40 07



RECEIVED

AUG 3 1 2011

WATER RESOURCES DEPT  
SALEM, OREGON

LAND WATER SUBMITTED MAP

1900  
3.59 AC.

SOUTH

NORTH 700.00

1700  
10.18 AC.

SEE CS 5812

CT

HWY

NO. 1

1800  
7.47 AC.

NORTH 775

NORTH 800

NORTH 800

EAST 300.00

EAST 284.00

800

800-087E 200.00

800-4737E

270.00

800

SEE HWY

800

EAST 400.00

140.00

200

185

120

Ext. Well  
Tank  
Newden

250

180

200

200

200

200

200

200

200

200

200

200

200

200

200

200

200

200

200

200

200