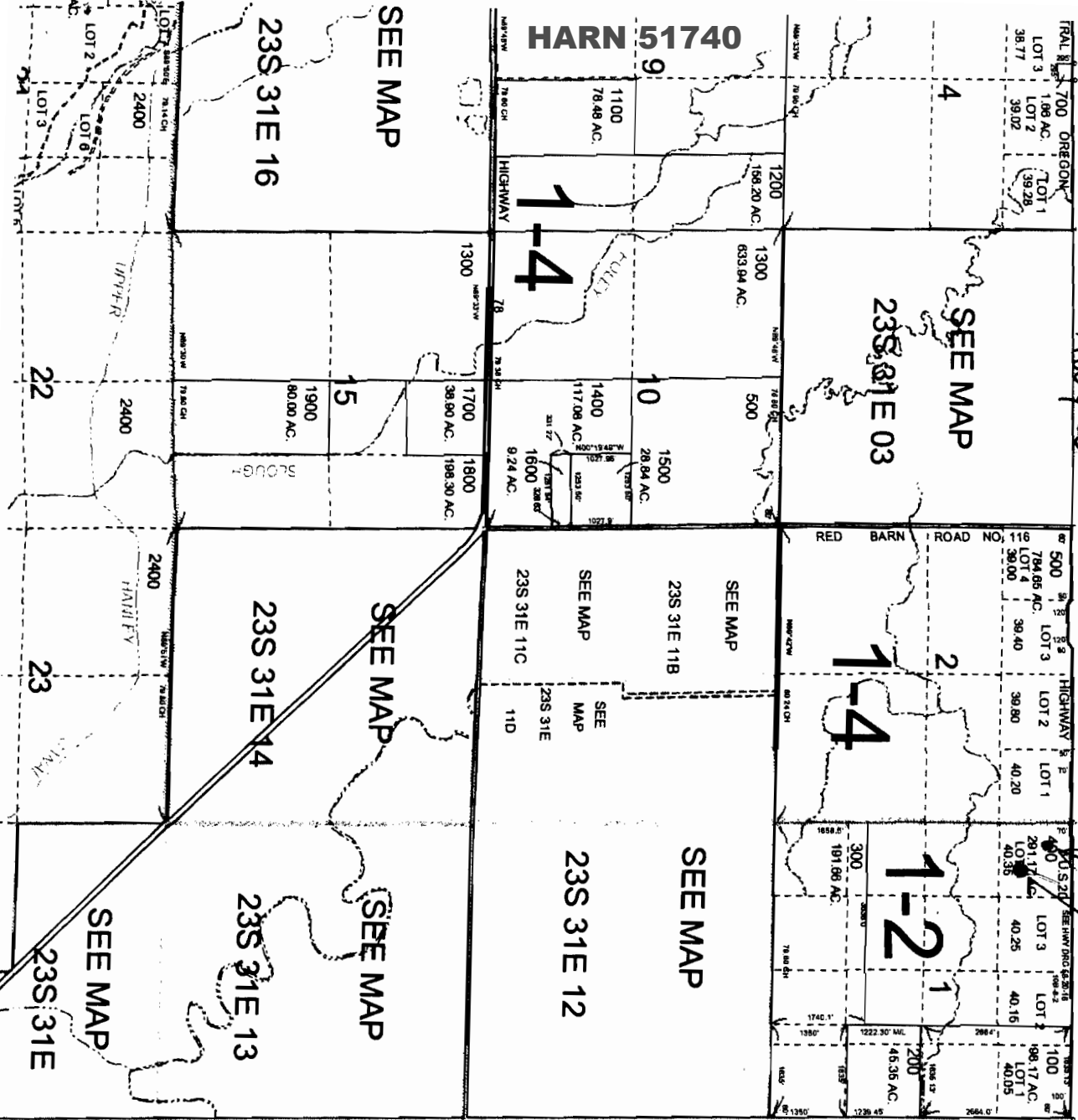


T.23S. R.31E. W.M.
HARNEY COUNTY

1" = 2000'
 SEE MAP 22S 31E



SEE MAP 23S 32E

23S 31E
 & INDEX

CANCELLED NO.
 200M1
 601
 801

*well located
 918 feet SE.
 of the pump
 house.
 TAX LOT 400
 Twp. 23S
 R. 31E.W.M
 Sec. 1*

RECEIVED

JAN 9 8 2012

WATER RESOURCES DEPT
 SALEM, OREGON

RECEIVED

JAN 9 8 2012

WATER RESOURCES DEPT
 SALEM, OREGON

DATE OF NEXT SUBMITTED MAP