

STATE OF OREGON

COUNTY OF KLAMATH

PERMIT TO APPROPRIATE THE PUBLIC WATERS

THIS PERMIT IS HEREBY ISSUED TO

KLAMATH BASIN IMPROVEMENT DISTRICT  
6640 KID LANE  
KLAMATH FALLS, OR 97603

The specific limits and conditions of the use are listed below.

APPLICATION FILE NUMBER: G-16030

SOURCE OF WATER: A WELL (KIAM 53737) IN NUSS LAKE BASIN

PURPOSE OR USE: SUPPLEMENTAL IRRIGATION OF 8959.82 ACRES

MAXIMUM RATE: 11.14 CUBIC FEET PER SECOND

PERIOD OF USE: MARCH 15 THROUGH OCTOBER 14

DATE OF PRIORITY: JUNE 4, 2003

WELL LOCATION: SE  $\frac{1}{4}$  SW  $\frac{1}{4}$ , SECTION 27, T39S, R10E, W.M.; 607 FEET NORTH & 2510 FEET EAST FROM SW CORNER, SECTION 27

The amount of water used for irrigation under this right, together with the amount secured under any other right existing for the same lands, is limited to a diversion of ONE-EIGHTIETH of one cubic foot per second and 3.0 acre-feet for each acre irrigated during the irrigation season of each year.

THE PLACE OF USE IS LOCATED AS FOLLOWS:

NE  $\frac{1}{4}$  NE  $\frac{1}{4}$  0.40 ACRE

SE  $\frac{1}{4}$  NE  $\frac{1}{4}$  23.34 ACRES

NE  $\frac{1}{4}$  SE  $\frac{1}{4}$  4.34 ACRES

SECTION 36

TOWNSHIP 39 SOUTH, RANGE 8 EAST, W.M.

NE  $\frac{1}{4}$  SW  $\frac{1}{4}$  11.24 ACRES

SE  $\frac{1}{4}$  SW  $\frac{1}{4}$  26.77 ACRES

NW  $\frac{1}{4}$  SE  $\frac{1}{4}$  2.40 ACRES

SW  $\frac{1}{4}$  SE  $\frac{1}{4}$  15.10 ACRES

SE  $\frac{1}{4}$  SE  $\frac{1}{4}$  5.80 ACRES

SECTION 9

TOWNSHIP 39 SOUTH, RANGE 9 EAST, W.M.

THE PLACE OF USE IS LOCATED AS FOLLOWS (CONTINUED):

NE  $\frac{1}{4}$  NE  $\frac{1}{4}$  3.80 ACRES  
 SE  $\frac{1}{4}$  NE  $\frac{1}{4}$  0.40 ACRE  
 SE  $\frac{1}{4}$  SW  $\frac{1}{4}$  0.50 ACRE  
 SECTION 13

NE  $\frac{1}{4}$  NW  $\frac{1}{4}$  1.50 ACRES  
 SW  $\frac{1}{4}$  NW  $\frac{1}{4}$  3.38 ACRES  
 NW  $\frac{1}{4}$  SW  $\frac{1}{4}$  1.00 ACRE  
 SECTION 14

NE  $\frac{1}{4}$  NE  $\frac{1}{4}$  1.00 ACRE  
 NW  $\frac{1}{4}$  NE  $\frac{1}{4}$  1.45 ACRES  
 SECTION 15

NE  $\frac{1}{4}$  NE  $\frac{1}{4}$  3.60 ACRES  
 NW  $\frac{1}{4}$  NE  $\frac{1}{4}$  2.80 ACRES  
 SW  $\frac{1}{4}$  SE  $\frac{1}{4}$  6.00 ACRES  
 SECTION 16

SE  $\frac{1}{4}$  SE  $\frac{1}{4}$  8.80 ACRES  
 SECTION 17

SE  $\frac{1}{4}$  SE  $\frac{1}{4}$  6.60 ACRES  
 SECTION 19

NE  $\frac{1}{4}$  NW  $\frac{1}{4}$  4.00 ACRES  
 NW  $\frac{1}{4}$  NW  $\frac{1}{4}$  4.00 ACRES  
 SW  $\frac{1}{4}$  NW  $\frac{1}{4}$  11.44 ACRES  
 SW  $\frac{1}{4}$  SW  $\frac{1}{4}$  6.40 ACRES  
 SE  $\frac{1}{4}$  SW  $\frac{1}{4}$  6.00 ACRES  
 SW  $\frac{1}{4}$  SE  $\frac{1}{4}$  11.10 ACRES  
 SECTION 21

SW  $\frac{1}{4}$  SE  $\frac{1}{4}$  7.10 ACRES  
 SE  $\frac{1}{4}$  SE  $\frac{1}{4}$  1.30 ACRES  
 SECTION 24

NE  $\frac{1}{4}$  NE  $\frac{1}{4}$  1.07 ACRES  
 NW  $\frac{1}{4}$  NE  $\frac{1}{4}$  9.36 ACRES  
 SECTION 25

SW  $\frac{1}{4}$  SW  $\frac{1}{4}$  20.50 ACRES  
 SECTION 27

TOWNSHIP 39 SOUTH, RANGE 9 EAST, W.M.

THE PLACE OF USE IS LOCATED AS FOLLOWS (CONTINUED) :

NW ¼ NE ¼ 25.30 ACRES  
 SW ¼ NE ¼ 38.10 ACRES  
 SE ¼ NE ¼ 1.30 ACRES  
 SE ¼ NW ¼ 12.40 ACRES  
 SW ¼ SW ¼ 8.00 ACRES  
 NE ¼ SE ¼ 5.00 ACRES  
 NW ¼ SE ¼ 4.60 ACRES

## SECTION 28

SW ¼ SW ¼ 7.70 ACRES

## SECTION 29

NE ¼ NE ¼ 34.92 ACRES  
 NW ¼ NE ¼ 18.06 ACRES  
 SE ¼ SE ¼ 19.60 ACRES

## SECTION 30

NE ¼ NE ¼ 8.70 ACRES  
 SE ¼ NE ¼ 2.40 ACRES  
 SE ¼ SW ¼ 14.00 ACRES  
 SW ¼ SE ¼ 17.80 ACRES

## SECTION 31

NW ¼ NE ¼ 2.60 ACRES  
 NW ¼ NW ¼ 9.70 ACRES  
 SW ¼ NW ¼ 6.60 ACRES  
 NE ¼ SW ¼ 8.30 ACRES  
 NW ¼ SW ¼ 9.20 ACRES  
 SW ¼ SW ¼ 1.00 ACRE  
 SE ¼ SW ¼ 17.60 ACRES  
 SW ¼ SE ¼ 13.90 ACRES  
 SE ¼ SE ¼ 24.80 ACRES

## SECTION 32

NW ¼ NE ¼ 12.70 ACRES  
 SW ¼ NE ¼ 40.00 ACRES  
 SE ¼ NE ¼ 28.30 ACRES  
 NE ¼ NW ¼ 18.20 ACRES  
 NW ¼ NW ¼ 27.40 ACRES  
 SW ¼ NW ¼ 16.50 ACRES  
 SE ¼ NW ¼ 40.00 ACRES  
 NE ¼ SW ¼ 13.40 ACRES  
 NW ¼ SW ¼ 0.50 ACRE  
 SW ¼ SW ¼ 10.40 ACRES  
 NE ¼ SE ¼ 39.50 ACRES

## SECTION 33

TOWNSHIP 39 SOUTH, RANGE 9 EAST, W.M.

THE PLACE OF USE IS LOCATED AS FOLLOWS (CONTINUED) :

NW ¼ SE ¼ 38.60 ACRES  
 SW ¼ SE ¼ 17.00 ACRES  
 SE ¼ SE ¼ 35.40 ACRES  
 SECTION 33

SW ¼ NE ¼ 16.00 ACRES  
 NE ¼ NW ¼ 8.00 ACRES  
 SE ¼ NW ¼ 7.00 ACRES  
 NW ¼ SW ¼ 5.30 ACRES  
 SW ¼ SW ¼ 13.40 ACRES  
 SE ¼ SW ¼ 7.00 ACRES  
 NE ¼ SE ¼ 3.00 ACRES  
 SW ¼ SE ¼ 1.30 ACRES  
 SE ¼ SE ¼ 1.00 ACRE  
 SECTION 34

SE ¼ NW ¼ 6.00 ACRES  
 NE ¼ SW ¼ 13.70 ACRES  
 SE ¼ SW ¼ 3.60 ACRES  
 NW ¼ SE ¼ 12.60 ACRES  
 SW ¼ SE ¼ 20.70 ACRES  
 SECTION 35

TOWNSHIP 39 SOUTH, RANGE 9 EAST, W.M.

SW ¼ NE ¼ 38.80 ACRES  
 SE ¼ NE ¼ 31.20 ACRES  
 SW ¼ NW ¼ 8.70 ACRES  
 SE ¼ NW ¼ 37.80 ACRES  
 NE ¼ SW ¼ 32.60 ACRES  
 NW ¼ SW ¼ 9.10 ACRES  
 SE ¼ SW ¼ 6.10 ACRES  
 NE ¼ SE ¼ 24.00 ACRES  
 NW ¼ SE ¼ 40.00 ACRES  
 SW ¼ SE ¼ 4.30 ACRES  
 SECTION 2

NW ¼ NE ¼ 8.10 ACRES  
 SW ¼ NE ¼ 22.80 ACRES  
 NE ¼ NW ¼ 3.70 ACRES  
 SE ¼ NW ¼ 0.70 ACRE  
 NW ¼ SE ¼ 3.20 ACRES  
 SECTION 11

TOWNSHIP 39 SOUTH, RANGE 10 EAST, W.M.

THE PLACE OF USE IS LOCATED AS FOLLOWS (CONTINUED):

NW ¼ NE ¼ 13.90 ACRES  
 SW ¼ NE ¼ 3.10 ACRES  
 NE ¼ NW ¼ 1.50 ACRES  
 NE ¼ SW ¼ 25.90 ACRES  
 NW ¼ SW ¼ 0.10 ACRE  
 SE ¼ SW ¼ 0.80 ACRE  
 NE ¼ SE ¼ 7.30 ACRES

## SECTION 12

LOT 6 SW ¼ NW ¼ 13.00 ACRES  
 SW ¼ NW ¼ 15.60 ACRES  
 SE ¼ NW ¼ 2.00 ACRES  
 NE ¼ SW ¼ 6.30 ACRES  
 NW ¼ SW ¼ 12.00 ACRES  
 SE ¼ SW ¼ 16.90 ACRES  
 SW ¼ SE ¼ 3.60 ACRES

## SECTION 13

LOT 7 SE ¼ NE ¼ 0.80 ACRE  
 SW ¼ SW ¼ 1.80 ACRES  
 NE ¼ SE ¼ 25.40 ACRES  
 NW ¼ SE ¼ 9.60 ACRES  
 SW ¼ SE ¼ 12.90 ACRES  
 SE ¼ SE ¼ 28.30 ACRES

## SECTION 14

NW ¼ NW ¼ 6.20 ACRES  
 SW ¼ NW ¼ 32.70 ACRES  
 NE ¼ SW ¼ 11.70 ACRES  
 NW ¼ SW ¼ 19.50 ACRES  
 SE ¼ SW ¼ 3.12 ACRES  
 NW ¼ SE ¼ 1.00 ACRE  
 SW ¼ SE ¼ 9.73 ACRES  
 SE ¼ SE ¼ 0.60 ACRE

## SECTION 15

NE ¼ NE ¼ 44.80 ACRES  
 NW ¼ NE ¼ 22.80 ACRES  
 SW ¼ NE ¼ 3.70 ACRES  
 SE ¼ NE ¼ 36.30 ACRES  
 NE ¼ NW ¼ 12.00 ACRES  
 SW ¼ SW ¼ 2.00 ACRES  
 NE ¼ SE ¼ 4.40 ACRES  
 SW ¼ SE ¼ 0.60 ACRE  
 SE ¼ SE ¼ 6.50 ACRES

## SECTION 16

TOWNSHIP 39 SOUTH, RANGE 10 EAST, W.M.

## THE PLACE OF USE IS LOCATED AS FOLLOWS (CONTINUED):

NE  $\frac{1}{4}$  SW  $\frac{1}{4}$  6.50 ACRES  
NW  $\frac{1}{4}$  SW  $\frac{1}{4}$  3.50 ACRES  
SW  $\frac{1}{4}$  SW  $\frac{1}{4}$  8.00 ACRES  
NE  $\frac{1}{4}$  SE  $\frac{1}{4}$  10.50 ACRES  
SECTION 17

NE  $\frac{1}{4}$  NE  $\frac{1}{4}$  16.80 ACRES  
SE  $\frac{1}{4}$  NE  $\frac{1}{4}$  38.80 ACRES  
NE  $\frac{1}{4}$  NW  $\frac{1}{4}$  1.50 ACRES  
SE  $\frac{1}{4}$  SW  $\frac{1}{4}$  1.90 ACRES  
NE  $\frac{1}{4}$  SE  $\frac{1}{4}$  40.00 ACRES  
NW  $\frac{1}{4}$  SE  $\frac{1}{4}$  25.00 ACRES  
SW  $\frac{1}{4}$  SE  $\frac{1}{4}$  38.50 ACRES  
SE  $\frac{1}{4}$  SE  $\frac{1}{4}$  37.10 ACRES  
SECTION 18

NW  $\frac{1}{4}$  NE  $\frac{1}{4}$  33.50 ACRES  
SE  $\frac{1}{4}$  NE  $\frac{1}{4}$  8.20 ACRES  
NE  $\frac{1}{4}$  NW  $\frac{1}{4}$  5.80 ACRES  
SECTION 19

NE  $\frac{1}{4}$  NE  $\frac{1}{4}$  2.00 ACRES  
NW  $\frac{1}{4}$  NW  $\frac{1}{4}$  4.10 ACRES  
SECTION 20

NE  $\frac{1}{4}$  NE  $\frac{1}{4}$  11.60 ACRES  
NW  $\frac{1}{4}$  NE  $\frac{1}{4}$  12.50 ACRES  
SW  $\frac{1}{4}$  NE  $\frac{1}{4}$  1.20 ACRES  
NE  $\frac{1}{4}$  NW  $\frac{1}{4}$  18.60 ACRES  
NW  $\frac{1}{4}$  NW  $\frac{1}{4}$  15.00 ACRES  
SW  $\frac{1}{4}$  NW  $\frac{1}{4}$  4.00 ACRES  
SE  $\frac{1}{4}$  NW  $\frac{1}{4}$  9.30 ACRES  
SW  $\frac{1}{4}$  SW  $\frac{1}{4}$  1.50 ACRES  
SECTION 21

NE  $\frac{1}{4}$  SW  $\frac{1}{4}$  26.40 ACRES  
NW  $\frac{1}{4}$  SE  $\frac{1}{4}$  12.10 ACRES  
SECTION 22

NE  $\frac{1}{4}$  NW  $\frac{1}{4}$  8.00 ACRES  
NW  $\frac{1}{4}$  NW  $\frac{1}{4}$  37.60 ACRES  
SW  $\frac{1}{4}$  NW  $\frac{1}{4}$  5.70 ACRES  
SE  $\frac{1}{4}$  SW  $\frac{1}{4}$  2.20 ACRES  
SECTION 27

TOWNSHIP 39 SOUTH, RANGE 10 EAST, W.M.

THE PLACE OF USE IS LOCATED AS FOLLOWS (CONTINUED):

NE  $\frac{1}{4}$  NE  $\frac{1}{4}$  9.80 ACRES  
 NW  $\frac{1}{4}$  NE  $\frac{1}{4}$  2.60 ACRES  
 SW  $\frac{1}{4}$  NE  $\frac{1}{4}$  3.70 ACRES  
 SE  $\frac{1}{4}$  NE  $\frac{1}{4}$  9.30 ACRES  
 NE  $\frac{1}{4}$  NW  $\frac{1}{4}$  3.20 ACRES  
 NW  $\frac{1}{4}$  NW  $\frac{1}{4}$  1.00 ACRE  
 SE  $\frac{1}{4}$  NW  $\frac{1}{4}$  0.70 ACRE  
 SW  $\frac{1}{4}$  SE  $\frac{1}{4}$  12.10 ACRES  
 SE  $\frac{1}{4}$  SE  $\frac{1}{4}$  0.80 ACRE

## SECTION 28

SE  $\frac{1}{4}$  SW  $\frac{1}{4}$  0.80 ACRE  
 SW  $\frac{1}{4}$  SE  $\frac{1}{4}$  7.00 ACRES  
 SE  $\frac{1}{4}$  SE  $\frac{1}{4}$  18.80 ACRES

## SECTION 29

NE  $\frac{1}{4}$  NE  $\frac{1}{4}$  2.94 ACRES

## SECTION 31

NE  $\frac{1}{4}$  NE  $\frac{1}{4}$  25.10 ACRES  
 NW  $\frac{1}{4}$  NE  $\frac{1}{4}$  19.80 ACRES  
 SE  $\frac{1}{4}$  NE  $\frac{1}{4}$  5.40 ACRES  
 NE  $\frac{1}{4}$  NW  $\frac{1}{4}$  15.00 ACRES  
 NW  $\frac{1}{4}$  NW  $\frac{1}{4}$  6.70 ACRES

## SECTION 32

NE  $\frac{1}{4}$  NE  $\frac{1}{4}$  16.70 ACRES  
 NW  $\frac{1}{4}$  NE  $\frac{1}{4}$  14.10 ACRES  
 SW  $\frac{1}{4}$  NE  $\frac{1}{4}$  11.90 ACRES  
 NE  $\frac{1}{4}$  NW  $\frac{1}{4}$  0.40 ACRE  
 NW  $\frac{1}{4}$  NW  $\frac{1}{4}$  15.20 ACRES  
 SE  $\frac{1}{4}$  NW  $\frac{1}{4}$  5.00 ACRES  
 NE  $\frac{1}{4}$  SW  $\frac{1}{4}$  1.50 ACRES  
 NW  $\frac{1}{4}$  SE  $\frac{1}{4}$  9.30 ACRES

## SECTION 33

NE  $\frac{1}{4}$  NW  $\frac{1}{4}$  11.40 ACRES  
 NW  $\frac{1}{4}$  NW  $\frac{1}{4}$  9.00 ACRES

## SECTION 34

TOWNSHIP 39 SOUTH, RANGE 10 EAST, W.M.

NW  $\frac{1}{4}$  NE  $\frac{1}{4}$  13.10 ACRES

## SECTION 32

TOWNSHIP 39 SOUTH, RANGE 11 EAST, W.M.

## THE PLACE OF USE IS LOCATED AS FOLLOWS (CONTINUED):

SW ¼ NE ¼ 5.00 ACRES  
 SW ¼ NW ¼ 12.10 ACRES  
 SE ¼ NW ¼ 34.00 ACRES  
 NE ¼ SW ¼ 7.20 ACRES  
 NE ¼ SE ¼ 0.60 ACRE  
 NW ¼ SE ¼ 25.00 ACRES  
 SW ¼ SE ¼ 1.00 ACRE  
 SE ¼ SE ¼ 10.00 ACRES  
 SECTION 18

SE ¼ SW ¼ 2.40 ACRES  
 SECTION 19

LOT 5 (SW ¼ SW ¼) 2.50 ACRES  
 LOT 6 (SE ¼ SW ¼) 2.50 ACRES  
 LOT 7 (SW ¼ SE ¼) 2.50 ACRES  
 LOT 8 (SE ¼ SE ¼) 2.50 ACRES  
 SW ¼ NE ¼ 2.50 ACRES  
 SE ¼ NE ¼ 4.73 ACRES  
 NE ¼ NW ¼ 6.40 ACRES  
 NW ¼ NW ¼ 14.80 ACRES  
 SE ¼ NW ¼ 3.80 ACRES  
 SECTION 20

LOT 2 NW ¼ NE ¼ 2.30 ACRES  
 SW ¼ NE ¼ 6.10 ACRES  
 SE ¼ NW ¼ 5.50 ACRES  
 SECTION 21

NW ¼ NW ¼ 2.70 ACRES  
 SW ¼ NW ¼ 26.70 ACRES  
 NW ¼ SW ¼ 12.60 ACRES  
 SE ¼ SW ¼ 8.00 ACRES  
 SW ¼ SE ¼ 10.00 ACRES  
 SECTION 22

NE ¼ NE ¼ 5.00 ACRES  
 NW ¼ NE ¼ 32.00 ACRES  
 SW ¼ NE ¼ 30.00 ACRES  
 SE ¼ NE ¼ 10.00 ACRES  
 NE ¼ NW ¼ 5.00 ACRES  
 SECTION 27

TOWNSHIP 39 SOUTH, RANGE 11.5 EAST, W.M.



THE PLACE OF USE IS LOCATED AS FOLLOWS (CONTINUED) :

SW ¼ NE ¼ 11.20 ACRES  
 NE ¼ NW ¼ 11.20 ACRES  
 SW ¼ NW ¼ 13.40 ACRES  
 SE ¼ NW ¼ 25.10 ACRES  
 NE ¼ SW ¼ 29.00 ACRES  
 SE ¼ SW ¼ 10.30 ACRES  
 NE ¼ SE ¼ 0.20 ACRE  
 NW ¼ SE ¼ 6.30 ACRES  
 SW ¼ SE ¼ 16.50 ACRE  
 SE ¼ SE ¼ 13.70 ACRES

SECTION 29

SW ¼ NE ¼ 1.00 ACRE  
 SE ¼ NE ¼ 14.80 ACRES  
 NE ¼ SE ¼ 17.70 ACRES  
 SE ¼ SE ¼ 33.40 ACRES

SECTION 32

SW ¼ NW ¼ 6.30 ACRES  
 NE ¼ SW ¼ 0.20 ACRE  
 NW ¼ SW ¼ 3.10 ACRES  
 SW ¼ SW ¼ 23.30 ACRES  
 SE ¼ SW ¼ 10.90 ACRES

SECTION 33

SW ¼ SW ¼ 6.60 ACRES  
 SECTION 34

SE ¼ SE ¼ 22.40 ACRES  
 SECTION 35

TOWNSHIP 39 SOUTH, RANGE 11.5 EAST, W.M.

NW ¼ SW ¼ 3.00 ACRES  
 SW ¼ SW ¼ 0.40 ACRE  
 SECTION 1

NW ¼ NE ¼ 10.20 ACRES  
 SE ¼ NE ¼ 13.00 ACRES  
 NE ¼ NW ¼ 6.60 ACRES  
 SW ¼ NW ¼ 4.60 ACRES  
 SE ¼ NW ¼ 8.30 ACRES  
 NE ¼ SW ¼ 8.30 ACRES

SECTION 2

TOWNSHIP 40 SOUTH, RANGE 9 EAST, W.M.

## THE PLACE OF USE IS LOCATED AS FOLLOWS (CONTINUED) :

SE  $\frac{1}{4}$  SW  $\frac{1}{4}$  15.00 ACRES  
 NE  $\frac{1}{4}$  SE  $\frac{1}{4}$  15.10 ACRES  
 NW  $\frac{1}{4}$  SE  $\frac{1}{4}$  26.60 ACRES  
 SW  $\frac{1}{4}$  SE  $\frac{1}{4}$  35.50 ACRES  
 SE  $\frac{1}{4}$  SE  $\frac{1}{4}$  39.00 ACRES  
 SECTION 2

NW  $\frac{1}{4}$  NE  $\frac{1}{4}$  20.70 ACRES  
 SW  $\frac{1}{4}$  NE  $\frac{1}{4}$  39.50 ACRES  
 SE  $\frac{1}{4}$  NE  $\frac{1}{4}$  8.40 ACRES  
 NE  $\frac{1}{4}$  NW  $\frac{1}{4}$  33.00 ACRES  
 NW  $\frac{1}{4}$  NW  $\frac{1}{4}$  16.20 ACRES  
 SW  $\frac{1}{4}$  NW  $\frac{1}{4}$  1.92 ACRES  
 NW  $\frac{1}{4}$  SW  $\frac{1}{4}$  0.40 ACRE  
 SW  $\frac{1}{4}$  SW  $\frac{1}{4}$  12.61 ACRES  
 NW  $\frac{1}{4}$  SE  $\frac{1}{4}$  14.30 ACRES  
 SW  $\frac{1}{4}$  SE  $\frac{1}{4}$  4.60 ACRES  
 SE  $\frac{1}{4}$  SE  $\frac{1}{4}$  4.10 ACRES  
 SECTION 3

NE  $\frac{1}{4}$  NE  $\frac{1}{4}$  37.40 ACRES  
 NW  $\frac{1}{4}$  NE  $\frac{1}{4}$  11.90 ACRES  
 SE  $\frac{1}{4}$  NE  $\frac{1}{4}$  8.90 ACRES  
 NE  $\frac{1}{4}$  NW  $\frac{1}{4}$  0.20 ACRE  
 SW  $\frac{1}{4}$  NW  $\frac{1}{4}$  3.00 ACRES  
 SE  $\frac{1}{4}$  NW  $\frac{1}{4}$  25.50 ACRES  
 NE  $\frac{1}{4}$  SW  $\frac{1}{4}$  1.50 ACRES  
 SW  $\frac{1}{4}$  SW  $\frac{1}{4}$  36.40 ACRES  
 SE  $\frac{1}{4}$  SW  $\frac{1}{4}$  13.10 ACRES  
 NW  $\frac{1}{4}$  SE  $\frac{1}{4}$  9.90 ACRES  
 SW  $\frac{1}{4}$  SE  $\frac{1}{4}$  6.40 ACRES  
 SE  $\frac{1}{4}$  SE  $\frac{1}{4}$  8.50 ACRES  
 SECTION 4

NW  $\frac{1}{4}$  NE  $\frac{1}{4}$  1.30 ACRES  
 NE  $\frac{1}{4}$  NW  $\frac{1}{4}$  7.20 ACRES  
 NW  $\frac{1}{4}$  NW  $\frac{1}{4}$  11.00 ACRES  
 SE  $\frac{1}{4}$  SW  $\frac{1}{4}$  34.00 ACRES  
 SW  $\frac{1}{4}$  SE  $\frac{1}{4}$  40.00 ACRES  
 SE  $\frac{1}{4}$  SE  $\frac{1}{4}$  38.80 ACRES  
 SECTION 5

NE  $\frac{1}{4}$  NE  $\frac{1}{4}$  6.40 ACRES  
 NE  $\frac{1}{4}$  SE  $\frac{1}{4}$  12.10 ACRES  
 SECTION 8

TOWNSHIP 40 SOUTH, RANGE 9 EAST, W.M.

THE PLACE OF USE IS LOCATED AS FOLLOWS (CONTINUED):

NE ¼ NE ¼ 7.80 ACRES  
 NW ¼ NE ¼ 3.30 ACRES  
 SW ¼ NE ¼ 23.60 ACRES  
 NE ¼ NW ¼ 10.90 ACRES  
 SW ¼ NW ¼ 6.20 ACRES  
 SE ¼ NW ¼ 35.00 ACRES  
 NE ¼ SW ¼ 2.00 ACRES  
 NW ¼ SW ¼ 11.00 ACRES

## SECTION 9

NE ¼ NE ¼ 11.70 ACRES  
 NW ¼ NE ¼ 29.30 ACRES  
 SW ¼ NE ¼ 18.80 ACRES  
 SE ¼ NE ¼ 12.40 ACRES  
 NE ¼ NW ¼ 5.30 ACRES  
 NW ¼ NW ¼ 4.90 ACRES  
 SW ¼ NW ¼ 2.80 ACRES  
 NE ¼ SW ¼ 19.40 ACRES  
 NW ¼ SW ¼ 30.40 ACRES  
 SW ¼ SW ¼ 2.80 ACRES  
 NE ¼ SE ¼ 13.50 ACRES  
 NW ¼ SE ¼ 8.10 ACRES  
 SE ¼ SE ¼ 6.30 ACRES

## SECTION 10

NE ¼ NE ¼ 13.60 ACRES  
 NW ¼ NE ¼ 2.40 ACRES  
 SW ¼ NE ¼ 15.00 ACRES  
 SE ¼ NE ¼ 37.10 ACRES  
 SW ¼ SW ¼ 4.90 ACRES  
 NE ¼ SE ¼ 10.40 ACRES  
 SE ¼ SE ¼ 10.40 ACRES

## SECTION 11

NW ¼ NW ¼ 19.90 ACRES  
 SW ¼ NW ¼ 39.10 ACRES  
 SE ¼ NW ¼ 8.20 ACRES  
 NE ¼ SW ¼ 28.20 ACRES  
 NW ¼ SW ¼ 35.60 ACRES  
 SW ¼ SW ¼ 17.20 ACRES  
 SE ¼ SW ¼ 23.80 ACRES

## SECTION 12

TOWNSHIP 40 SOUTH, RANGE 9 EAST, W.M.

## THE PLACE OF USE IS LOCATED AS FOLLOWS (CONTINUED):

NW  $\frac{1}{4}$  NE  $\frac{1}{4}$  3.00 ACRES  
 NE  $\frac{1}{4}$  NW  $\frac{1}{4}$  6.30 ACRES  
 NW  $\frac{1}{4}$  NW  $\frac{1}{4}$  36.60 ACRES  
 SW  $\frac{1}{4}$  NW  $\frac{1}{4}$  22.10 ACRES  
 NW  $\frac{1}{4}$  SW  $\frac{1}{4}$  22.80 ACRES  
 SW  $\frac{1}{4}$  SW  $\frac{1}{4}$  36.00 ACRES  
 SE  $\frac{1}{4}$  SW  $\frac{1}{4}$  16.60 ACRES  
 SW  $\frac{1}{4}$  SE  $\frac{1}{4}$  23.00 ACRES  
 SE  $\frac{1}{4}$  SE  $\frac{1}{4}$  19.00 ACRES  
 SECTION 13

NE  $\frac{1}{4}$  NE  $\frac{1}{4}$  13.40 ACRES  
 NW  $\frac{1}{4}$  NE  $\frac{1}{4}$  1.00 ACRE  
 SE  $\frac{1}{4}$  NE  $\frac{1}{4}$  22.50 ACRES  
 NW  $\frac{1}{4}$  NW  $\frac{1}{4}$  0.50 ACRE  
 SW  $\frac{1}{4}$  NW  $\frac{1}{4}$  0.60 ACRE  
 SW  $\frac{1}{4}$  SW  $\frac{1}{4}$  0.40 ACRE  
 NE  $\frac{1}{4}$  SE  $\frac{1}{4}$  23.30 ACRES  
 SW  $\frac{1}{4}$  SE  $\frac{1}{4}$  22.30 ACRES  
 SE  $\frac{1}{4}$  SE  $\frac{1}{4}$  38.40 ACRES  
 SECTION 14

SE  $\frac{1}{4}$  SE  $\frac{1}{4}$  1.80 ACRES  
 SECTION 15

NE  $\frac{1}{4}$  NE  $\frac{1}{4}$  4.00 ACRES  
 SECTION 16

NE  $\frac{1}{4}$  NE  $\frac{1}{4}$  40.00 ACRES  
 SW  $\frac{1}{4}$  NE  $\frac{1}{4}$  5.20 ACRES  
 SE  $\frac{1}{4}$  NE  $\frac{1}{4}$  23.00 ACRES  
 NE  $\frac{1}{4}$  NW  $\frac{1}{4}$  7.80 ACRES  
 NW  $\frac{1}{4}$  NW  $\frac{1}{4}$  3.10 ACRES  
 SE  $\frac{1}{4}$  NW  $\frac{1}{4}$  2.30 ACRES  
 SECTION 23

NE  $\frac{1}{4}$  NE  $\frac{1}{4}$  15.00 ACRES  
 NW  $\frac{1}{4}$  NE  $\frac{1}{4}$  9.00 ACRES  
 NW  $\frac{1}{4}$  NW  $\frac{1}{4}$  27.30 ACRES  
 SW  $\frac{1}{4}$  NW  $\frac{1}{4}$  12.40 ACRES  
 SECTION 24

TOWNSHIP 40 SOUTH, RANGE 9 EAST, W.M.

NW  $\frac{1}{4}$  SW  $\frac{1}{4}$  21.50 ACRES  
 SECTION 4

TOWNSHIP 40 SOUTH, RANGE 10 EAST, W.M.

THE PLACE OF USE IS LOCATED AS FOLLOWS (CONTINUED):

NE 1/4 NW 1/4 3.60 ACRES  
NW 1/4 NW 1/4 14.40 ACRES  
SW 1/4 NW 1/4 4.50 ACRES  
SE 1/4 NW 1/4 10.60 ACRES  
NW 1/4 SE 1/4 3.10 ACRES  
SW 1/4 SE 1/4 19.60 ACRES

SECTION 5

NE 1/4 SE 1/4 0.30 ACRE  
SE 1/4 SE 1/4 3.50 ACRES

SECTION 6

NW 1/4 NE 1/4 9.20 ACRES  
SW 1/4 NE 1/4 8.08 ACRES  
SW 1/4 SE 1/4 11.70 ACRES

SECTION 8

SW 1/4 SW 1/4 37.10 ACRES

SECTION 16

LOT 9

NW 1/4 NE 1/4 14.50 ACRES  
SW 1/4 NE 1/4 4.50 ACRES  
SE 1/4 NE 1/4 35.10 ACRES  
NE 1/4 SE 1/4 29.30 ACRES  
SE 1/4 SE 1/4 14.00 ACRES

SECTION 17

SW 1/4 SW 1/4 2.60 ACRES  
SE 1/4 SW 1/4 10.80 ACRES

SECTION 18

SW 1/4 NE 1/4 1.00 ACRE  
SE 1/4 NE 1/4 4.00 ACRES  
NE 1/4 NW 1/4 2.70 ACRES  
SE 1/4 NW 1/4 1.00 ACRE  
NE 1/4 SE 1/4 33.50 ACRES  
NW 1/4 SE 1/4 2.20 ACRES  
SE 1/4 SE 1/4 28.70 ACRES

SECTION 19

NW 1/4 SW 1/4 7.50 ACRES  
SW 1/4 SW 1/4 33.50 ACRES  
SE 1/4 SW 1/4 4.40 ACRES

SECTION 20

TOWNSHIP 40 SOUTH, RANGE 10 EAST, W.M.

## THE PLACE OF USE IS LOCATED AS FOLLOWS (CONTINUED):

NW  $\frac{1}{4}$  NW  $\frac{1}{4}$  14.60 ACRES  
SE  $\frac{1}{4}$  NW  $\frac{1}{4}$  7.90 ACRES  
NE  $\frac{1}{4}$  SE  $\frac{1}{4}$  17.90 ACRES  
SE  $\frac{1}{4}$  SE  $\frac{1}{4}$  1.60 ACRES  
SECTION 21

NW  $\frac{1}{4}$  SW  $\frac{1}{4}$  2.10 ACRES  
SW  $\frac{1}{4}$  SW  $\frac{1}{4}$  6.60 ACRES  
SE  $\frac{1}{4}$  SW  $\frac{1}{4}$  0.70 ACRE  
SECTION 22

SW  $\frac{1}{4}$  SW  $\frac{1}{4}$  6.00 ACRES  
SE  $\frac{1}{4}$  SW  $\frac{1}{4}$  2.20 ACRES  
SW  $\frac{1}{4}$  SE  $\frac{1}{4}$  6.00 ACRES  
SE  $\frac{1}{4}$  SE  $\frac{1}{4}$  10.90 ACRES  
SECTION 25

SW  $\frac{1}{4}$  NW  $\frac{1}{4}$  12.40 ACRES  
SE  $\frac{1}{4}$  NW  $\frac{1}{4}$  1.60 ACRES  
NE  $\frac{1}{4}$  SW  $\frac{1}{4}$  5.40 ACRES  
NW  $\frac{1}{4}$  SW  $\frac{1}{4}$  9.90 ACRES  
NW  $\frac{1}{4}$  SE  $\frac{1}{4}$  0.10 ACRE  
SECTION 26

NW  $\frac{1}{4}$  NE  $\frac{1}{4}$  6.20 ACRES  
SW  $\frac{1}{4}$  NE  $\frac{1}{4}$  3.40 ACRES  
SE  $\frac{1}{4}$  NE  $\frac{1}{4}$  18.70 ACRES  
NE  $\frac{1}{4}$  NW  $\frac{1}{4}$  2.90 ACRES  
SECTION 27

SE  $\frac{1}{4}$  SW  $\frac{1}{4}$  2.10 ACRES  
SW  $\frac{1}{4}$  SW  $\frac{1}{4}$  1.90 ACRES  
SECTION 28

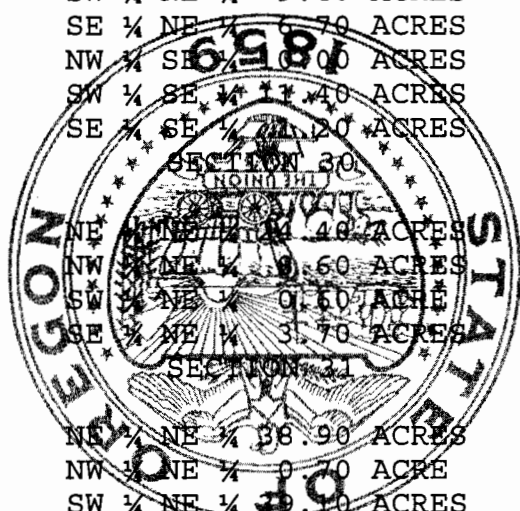
NE  $\frac{1}{4}$  NE  $\frac{1}{4}$  4.40 ACRES  
SE  $\frac{1}{4}$  NE  $\frac{1}{4}$  0.20 ACRE  
NE  $\frac{1}{4}$  NW  $\frac{1}{4}$  32.40 ACRES  
NW  $\frac{1}{4}$  NW  $\frac{1}{4}$  38.10 ACRES  
SW  $\frac{1}{4}$  NW  $\frac{1}{4}$  40.00 ACRES  
SE  $\frac{1}{4}$  NW  $\frac{1}{4}$  30.00 ACRES  
NW  $\frac{1}{4}$  SW  $\frac{1}{4}$  7.80 ACRES  
SW  $\frac{1}{4}$  SW  $\frac{1}{4}$  28.40 ACRES  
SE  $\frac{1}{4}$  SW  $\frac{1}{4}$  23.20 ACRES  
SECTION 29

TOWNSHIP 40 SOUTH, RANGE 10 EAST, W.M.

THE PLACE OF USE IS LOCATED AS FOLLOWS (CONTINUED) :

NW ¼ SE ¼ 0.60 ACRE  
 SW ¼ SE ¼ 14.30 ACRES  
 SE ¼ SE ¼ 3.40 ACRES  
 SECTION 29

NE ¼ NE ¼ 13.80 ACRES  
 SW ¼ NE ¼ 9.40 ACRES  
 SE ¼ NE ¼ 6.70 ACRES  
 NW ¼ SE ¼ 0.00 ACRES  
 SW ¼ SE ¼ 17.40 ACRES  
 SE ¼ SE ¼ 21.20 ACRES



SECTION 30  
 NE ¼ NE ¼ 48.00 ACRES  
 NW ¼ NE ¼ 0.60 ACRES  
 SW ¼ NE ¼ 0.60 ACRES  
 SE ¼ NE ¼ 3.70 ACRES

SECTION 31  
 NE ¼ NE ¼ 38.90 ACRES  
 NW ¼ NE ¼ 0.70 ACRE  
 SW ¼ NE ¼ 20.50 ACRES  
 SE ¼ NE ¼ 38.20 ACRES  
 NE ¼ NW ¼ 40.00 ACRES  
 NW ¼ NW ¼ 35.00 ACRES  
 SW ¼ NW ¼ 6.00 ACRES  
 SE ¼ NW ¼ 26.10 ACRES  
 SECTION 32

NE ¼ NW ¼ 0.60 ACRE  
 NW ¼ NW ¼ 13.30 ACRES  
 SW ¼ NW ¼ 24.10 ACRES  
 NE ¼ SW ¼ 32.40 ACRES  
 NW ¼ SW ¼ 13.20 ACRES  
 SW ¼ SW ¼ 36.60 ACRES  
 SE ¼ SW ¼ 40.00 ACRES  
 NE ¼ SE ¼ 3.20 ACRES  
 NW ¼ SE ¼ 23.30 ACRES  
 SW ¼ SE ¼ 39.10 ACRES  
 SE ¼ SE ¼ 34.60 ACRES  
 SECTION 33

SW ¼ SW ¼ 24.30 ACRES  
 SECTION 34

TOWNSHIP 40 SOUTH, RANGE 10 EAST, W.M.

## THE PLACE OF USE IS LOCATED AS FOLLOWS (CONTINUED):

|        |       |       |
|--------|-------|-------|
| LOT 5  | 39.60 | ACRES |
| LOT 6  | 19.60 | ACRES |
| LOT 11 | 39.70 | ACRES |
| LOT 12 | 40.00 | ACRES |
| LOT 13 | 39.40 | ACRES |
| LOT 14 | 32.80 | ACRES |
| LOT 15 | 0.50  | ACRE  |

## SECTION 1

|                                   |       |       |
|-----------------------------------|-------|-------|
| LOT 1                             | 1.70  | ACRES |
| LOT 2                             | 3.30  | ACRES |
| LOT 7                             | 7.70  | ACRES |
| LOT 8                             | 18.90 | ACRES |
| LOT 9                             | 30.80 | ACRES |
| LOT 13                            | 3.20  | ACRES |
| LOT 15                            | 16.30 | ACRES |
| LOT 16                            | 36.60 | ACRES |
| LOT 17                            | 39.40 | ACRES |
| LOT 18                            | 39.10 | ACRES |
| LOT 19                            | 27.60 | ACRES |
| LOT 20                            | 23.00 | ACRES |
| NE $\frac{1}{4}$ SW $\frac{1}{4}$ | 39.70 | ACRES |
| NW $\frac{1}{4}$ SW $\frac{1}{4}$ | 38.30 | ACRES |
| SW $\frac{1}{4}$ SW $\frac{1}{4}$ | 18.80 | ACRES |
| SE $\frac{1}{4}$ SW $\frac{1}{4}$ | 40.00 | ACRES |
| NE $\frac{1}{4}$ SE $\frac{1}{4}$ | 37.40 | ACRES |
| NW $\frac{1}{4}$ SE $\frac{1}{4}$ | 40.00 | ACRES |
| SW $\frac{1}{4}$ SE $\frac{1}{4}$ | 40.00 | ACRES |
| SE $\frac{1}{4}$ SE $\frac{1}{4}$ | 17.20 | ACRES |

## SECTION 2

|        |       |       |
|--------|-------|-------|
| LOT 3  | 0.70  | ACRE  |
| LOT 4  | 7.20  | ACRES |
| LOT 5  | 1.50  | ACRES |
| LOT 6  | 13.20 | ACRES |
| LOT 7  | 1.30  | ACRES |
| LOT 9  | 6.00  | ACRES |
| LOT 10 | 0.30  | ACRE  |
| LOT 11 | 24.40 | ACRES |
| LOT 12 | 33.40 | ACRES |
| LOT 13 | 39.10 | ACRES |
| LOT 14 | 38.20 | ACRES |
| LOT 15 | 12.20 | ACRES |
| LOT 16 | 6.30  | ACRES |

## SECTION 3

TOWNSHIP 40 SOUTH, RANGE 11 EAST, W.M.



THE PLACE OF USE IS LOCATED AS FOLLOWS (CONTINUED) :

LOT 17 11.60 ACRES  
 LOT 18 38.50 ACRES  
 LOT 19 29.50 ACRES  
 LOT 20 34.10 ACRES  
 NE  $\frac{1}{4}$  SW  $\frac{1}{4}$  13.20 ACRES  
 SE  $\frac{1}{4}$  SW  $\frac{1}{4}$  27.80 ACRES  
 NE  $\frac{1}{4}$  SE  $\frac{1}{4}$  36.00 ACRES  
 NW  $\frac{1}{4}$  SE  $\frac{1}{4}$  40.00 ACRES  
 SW  $\frac{1}{4}$  SE  $\frac{1}{4}$  40.00 ACRES  
 SE  $\frac{1}{4}$  SE  $\frac{1}{4}$  40.00 ACRES

## SECTION 3

LOT 2 3.40 ACRES  
 LOT 3 1.00 ACRE  
 LOT 4 6.30 ACRES  
 LOT 5 19.80 ACRES  
 LOT 6 8.50 ACRES  
 LOT 7 25.40 ACRES  
 LOT 9 2.50 ACRES  
 LOT 10 36.50 ACRES  
 LOT 11 37.50 ACRES  
 LOT 12 14.20 ACRES  
 LOT 13 0.10 ACRE  
 LOT 14 33.10 ACRES  
 LOT 15 36.50 ACRES  
 LOT 16 32.90 ACRES  
 LOT 18 40.00 ACRES  
 LOT 19 30.00 ACRES

## SECTION 4

LOT 1 16.50 ACRES  
 LOT 8 3.30 ACRES

## SECTION 5

SW  $\frac{1}{4}$  NW  $\frac{1}{4}$  20.00 ACRES  
 SE  $\frac{1}{4}$  NW  $\frac{1}{4}$  20.00 ACRES  
 NE  $\frac{1}{4}$  SW  $\frac{1}{4}$  37.60 ACRES  
 NW  $\frac{1}{4}$  SW  $\frac{1}{4}$  35.80 ACRES  
 SW  $\frac{1}{4}$  SW  $\frac{1}{4}$  38.60 ACRES  
 SE  $\frac{1}{4}$  SW  $\frac{1}{4}$  39.50 ACRES  
 NW  $\frac{1}{4}$  SE  $\frac{1}{4}$  19.60 ACRES  
 SW  $\frac{1}{4}$  SE  $\frac{1}{4}$  38.20 ACRES

## SECTION 28

TOWNSHIP 40 SOUTH, RANGE 11 EAST, W.M.

THE PLACE OF USE IS LOCATED AS FOLLOWS (CONTINUED) :

SE  $\frac{1}{4}$  NE  $\frac{1}{4}$  19.60 ACRES  
 NE  $\frac{1}{4}$  SW  $\frac{1}{4}$  23.00 ACRES  
 SE  $\frac{1}{4}$  SW  $\frac{1}{4}$  27.90 ACRES  
 NE  $\frac{1}{4}$  SE  $\frac{1}{4}$  38.30 ACRES  
 NW  $\frac{1}{4}$  SE  $\frac{1}{4}$  32.00 ACRES  
 SW  $\frac{1}{4}$  SE  $\frac{1}{4}$  27.70 ACRES  
 SE  $\frac{1}{4}$  SE  $\frac{1}{4}$  38.60 ACRES  
 SECTION 29

NE  $\frac{1}{4}$  SW  $\frac{1}{4}$  11.00 ACRES  
 NW  $\frac{1}{4}$  SW  $\frac{1}{4}$  16.20 ACRES  
 SW  $\frac{1}{4}$  SW  $\frac{1}{4}$  0.90 ACRE  
 NE  $\frac{1}{4}$  SE  $\frac{1}{4}$  14.90 ACRES  
 NW  $\frac{1}{4}$  SE  $\frac{1}{4}$  31.70 ACRES  
 SW  $\frac{1}{4}$  SE  $\frac{1}{4}$  3.30 ACRES  
 SE  $\frac{1}{4}$  SE  $\frac{1}{4}$  30.40 ACRES  
 SECTION 30

NE  $\frac{1}{4}$  NE  $\frac{1}{4}$  30.50 ACRES  
 SE  $\frac{1}{4}$  NE  $\frac{1}{4}$  17.90 ACRES  
 NE  $\frac{1}{4}$  NW  $\frac{1}{4}$  4.00 ACRES  
 NE  $\frac{1}{4}$  SE  $\frac{1}{4}$  0.70 ACRE  
 SECTION 31

NE  $\frac{1}{4}$  NE  $\frac{1}{4}$  39.10 ACRES  
 SE  $\frac{1}{4}$  NE  $\frac{1}{4}$  36.50 ACRES  
 NW  $\frac{1}{4}$  NW  $\frac{1}{4}$  0.40 ACRE  
 SW  $\frac{1}{4}$  NW  $\frac{1}{4}$  14.50 ACRES  
 NW  $\frac{1}{4}$  SW  $\frac{1}{4}$  7.20 ACRES  
 NE  $\frac{1}{4}$  SE  $\frac{1}{4}$  31.30 ACRES  
 NW  $\frac{1}{4}$  SE  $\frac{1}{4}$  11.90 ACRES  
 SW  $\frac{1}{4}$  SE  $\frac{1}{4}$  0.10 ACRE  
 SE  $\frac{1}{4}$  SE  $\frac{1}{4}$  6.20 ACRES  
 SECTION 32

NW  $\frac{1}{4}$  NE  $\frac{1}{4}$  27.60 ACRES  
 SW  $\frac{1}{4}$  NE  $\frac{1}{4}$  33.10 ACRES  
 NE  $\frac{1}{4}$  NW  $\frac{1}{4}$  39.50 ACRES  
 NW  $\frac{1}{4}$  NW  $\frac{1}{4}$  25.00 ACRES  
 SW  $\frac{1}{4}$  NW  $\frac{1}{4}$  26.80 ACRES  
 SE  $\frac{1}{4}$  NW  $\frac{1}{4}$  39.70 ACRES  
 NW  $\frac{1}{4}$  SW  $\frac{1}{4}$  12.90 ACRES  
 SW  $\frac{1}{4}$  SW  $\frac{1}{4}$  6.30 ACRES  
 NE  $\frac{1}{4}$  SE  $\frac{1}{4}$  19.80 ACRES  
 SECTION 33

TOWNSHIP 40 SOUTH, RANGE 11 EAST, W.M.

THE PLACE OF USE IS LOCATED AS FOLLOWS (CONTINUED) :

NW  $\frac{1}{4}$  SW  $\frac{1}{4}$  5.00 ACRES

SW  $\frac{1}{4}$  SW  $\frac{1}{4}$  10.90 ACRES

SECTION 34

TOWNSHIP 40 SOUTH, RANGE 11 EAST, W.M.

SW  $\frac{1}{4}$  SW  $\frac{1}{4}$  18.00 ACRES

SECTION 11

TOWNSHIP 41 SOUTH, RANGE 10 EAST, W.M.

SW  $\frac{1}{4}$  NW  $\frac{1}{4}$  2.00 ACRES

NW  $\frac{1}{4}$  SW  $\frac{1}{4}$  9.80 ACRES

SECTION 1

NW  $\frac{1}{4}$  NE  $\frac{1}{4}$  29.20 ACRES

SW  $\frac{1}{4}$  NE  $\frac{1}{4}$  32.60 ACRES

SE  $\frac{1}{4}$  NE  $\frac{1}{4}$  3.00 ACRES

SE  $\frac{1}{4}$  NW  $\frac{1}{4}$  5.00 ACRES

NE  $\frac{1}{4}$  SW  $\frac{1}{4}$  6.30 ACRES

NE  $\frac{1}{4}$  SE  $\frac{1}{4}$  34.20 ACRES

NW  $\frac{1}{4}$  SE  $\frac{1}{4}$  9.70 ACRES

SW  $\frac{1}{4}$  SE  $\frac{1}{4}$  2.10 ACRES

SE  $\frac{1}{4}$  SE  $\frac{1}{4}$  7.10 ACRES

SECTION 2

SW  $\frac{1}{4}$  NE  $\frac{1}{4}$  4.80 ACRES

SE  $\frac{1}{4}$  NE  $\frac{1}{4}$  18.80 ACRES

NW  $\frac{1}{4}$  NW  $\frac{1}{4}$  2.10 ACRES

NE  $\frac{1}{4}$  SE  $\frac{1}{4}$  11.90 ACRES

NW  $\frac{1}{4}$  SE  $\frac{1}{4}$  18.10 ACRES

SW  $\frac{1}{4}$  SE  $\frac{1}{4}$  2.80 ACRES

SE  $\frac{1}{4}$  SE  $\frac{1}{4}$  11.90 ACRES

SECTION 3

SE  $\frac{1}{4}$  NE  $\frac{1}{4}$  14.00 ACRES

NE  $\frac{1}{4}$  NW  $\frac{1}{4}$  8.00 ACRES

NW  $\frac{1}{4}$  NW  $\frac{1}{4}$  11.60 ACRES

SE  $\frac{1}{4}$  NW  $\frac{1}{4}$  12.00 ACRES

NE  $\frac{1}{4}$  SW  $\frac{1}{4}$  25.30 ACRES

NW  $\frac{1}{4}$  SE  $\frac{1}{4}$  16.40 ACRES

SE  $\frac{1}{4}$  SE  $\frac{1}{4}$  7.90 ACRES

SECTION 4

TOWNSHIP 41 SOUTH, RANGE 11 EAST, W.M.

THE PLACE OF USE IS LOCATED AS FOLLOWS (CONTINUED):

NE  $\frac{1}{4}$  NE  $\frac{1}{4}$  1.50 ACRES  
 NW  $\frac{1}{4}$  NE  $\frac{1}{4}$  4.00 ACRES  
 SW  $\frac{1}{4}$  NW  $\frac{1}{4}$  15.00 ACRES  
 NW  $\frac{1}{4}$  SW  $\frac{1}{4}$  1.00 ACRE  
 SECTION 5

NW  $\frac{1}{4}$  NE  $\frac{1}{4}$  3.70 ACRES  
 SECTION 10  
 TOWNSHIP 41 SOUTH, RANGE 11 EAST, W.M.

NW  $\frac{1}{4}$  NE  $\frac{1}{4}$  3.50 ACRES  
 SECTION 3

SW  $\frac{1}{4}$  NE  $\frac{1}{4}$  10.40 ACRES  
 NW  $\frac{1}{4}$  NW  $\frac{1}{4}$  5.00 ACRES  
 SE  $\frac{1}{4}$  NW  $\frac{1}{4}$  10.00 ACRES  
 SECTION 4

LOT 1 NE  $\frac{1}{4}$  NW  $\frac{1}{4}$  7.70 ACRES  
 NW  $\frac{1}{4}$  NW  $\frac{1}{4}$  2.90 ACRES  
 SECTION 6

SW  $\frac{1}{4}$  SE  $\frac{1}{4}$  3.00 ACRES  
 SE  $\frac{1}{4}$  SE  $\frac{1}{4}$  12.00 ACRES  
 SECTION 9

NW  $\frac{1}{4}$  SW  $\frac{1}{4}$  6.90 ACRES  
 SW  $\frac{1}{4}$  SW  $\frac{1}{4}$  5.90 ACRES  
 SECTION 10

SW  $\frac{1}{4}$  NE  $\frac{1}{4}$  10.00 ACRES  
 SE  $\frac{1}{4}$  NE  $\frac{1}{4}$  14.40 ACRES  
 NE  $\frac{1}{4}$  NW  $\frac{1}{4}$  12.20 ACRES  
 SE  $\frac{1}{4}$  NW  $\frac{1}{4}$  3.80 ACRES  
 SECTION 11

NE  $\frac{1}{4}$  NE  $\frac{1}{4}$  6.20 ACRES  
 SE  $\frac{1}{4}$  NE  $\frac{1}{4}$  0.60 ACRE  
 SECTION 13  
 TOWNSHIP 41 SOUTH, RANGE 12 EAST, W.M.

## Measurement, recording and reporting conditions:

- A. Before water use may begin under this permit, the permittee shall install a totalizing flow meter at each point of appropriation. The totalizing flow meter(s) must be installed and maintained in good working order. The permittee shall keep a complete record of the amount of water used each month and shall submit a report which includes the recorded water use measurements to the Department annually or more frequently as may be required by the Director. Further, the Director may require the permittee to report general water use information, including the place and nature of use of water under the permit.
- B. The permittee shall allow the watermaster access to the meter(s); provided however, where any meter is located within a private structure, the watermaster shall request access upon reasonable notice.

To monitor the effect of water use from the well(s) authorized under this permit, the Department requires the water user to make and report annual static water level measurements. The static water level shall be measured in the month of March. Reports shall be submitted to the Department within 30 days of measurement.

Measurements must be made according to the following schedule:

**Before Use of Water Takes Place**Initial and Annual Measurements

The Department requires the permittee to submit an initial water level measurement in the month specified above once well construction is complete and annually thereafter until use of water begins; and

**After Use of Water has Begun**Seven Consecutive Annual Measurements

Following the first year of water use, the user shall submit seven consecutive annual reports of static water level measurements. The first of these seven annual measurements will establish the reference level against which future annual measurements will be compared. Based on an analysis of the data collected, the Director may require that the user obtain and report additional annual static water level measurements beyond the seven year minimum reporting period. The additional measurements may be required in a different month. If the measurement requirement is stopped, the Director may restart it at any time.

All measurements shall be made by a certified water rights examiner, registered professional geologist, registered professional engineer, licensed well constructor or pump installer licensed by the Construction

Contractors Board and be submitted to the Department on forms provided by the Department. The Department requires the individual performing the measurement to:

- A. Identify each well with its associated measurement; and
- B. Measure and report water levels to the nearest tenth of a foot as depth-to-water below ground surface; and
- C. Specify the method used to obtain each well measurement; and
- D. Certify the accuracy of all measurements and calculations submitted to the Department.

The water user shall discontinue use of, or reduce the rate or volume of withdrawal from, the well(s) if any of the following events occur:

- A. Annual water level measurements reveal an average water level decline of three or more feet per year for five consecutive years; or
- B. Annual water level measurements reveal a water level decline of 15 or more feet in fewer than five consecutive years; or
- C. Annual water level measurements reveal a water level decline of 25 or more feet; or
- D. Hydraulic interference leads to a decline of 25 or more feet in any neighboring well with senior priority.

The period of non or restricted use shall continue until the water level rises above the decline level which triggered the action or until the Department determines, based on the permittee's and/or the Department's data and analysis, that no action is necessary because the aquifer in question can sustain the observed declines without adversely impacting the resource or senior water rights. The water user shall in no instance allow excessive decline, as defined in Commission rules, to occur within the aquifer as a result of use under this permit. If more than one well is involved, the water user may submit an alternative measurement and reporting plan for review and approval by the Department.

If it is determined there are no underlying rights for these same lands after the adjudication of claims in the Klamath Basin, a certificate resulting from use of water under this permit may allow primary, rather than supplemental, irrigation of the lands described above. However, the right evidenced by such a certificate will be limited to the actual use made under this permit.

#### **STANDARD CONDITIONS**

If the number, location, source, or construction of any well deviates from that proposed in the permit application or required by permit conditions, this permit may not be valid, unless the Department authorizes the change in writing.

If substantial interference with a senior water right occurs due to withdrawal of water from any well listed on this permit, then use of water from the well(s) shall be discontinued or reduced and/or the schedule of withdrawal shall be regulated until or unless the Department approves or implements an alternative administrative action to mitigate the interference. The Department encourages junior and senior appropriators to jointly develop plans to mitigate interferences.

The well shall be constructed in accordance with the General Standards for the Construction and Maintenance of Water Wells in Oregon. The works shall be equipped with a usable access port, and may also include an air line and pressure gauge adequate to determine water level elevation in the well at all times.

Where two or more water users agree among themselves as to the manner of rotation in the use of water and such agreement is placed in writing and filed by such water users with the watermaster, and such rotation system does not infringe upon such prior rights of any water user not a party to such rotation plan, the watermaster shall distribute the water according to such agreement.

Prior to receiving a certificate of water right, the permit holder shall submit the results of a pump test meeting the department's standards, to the Water Resources Department. The Director may require water level or pump test results every ten years thereafter.

Failure to comply with any of the provisions of this permit may result in action including, but not limited to, restrictions on the use, civil penalties, or cancellation of the permit.

This permit is for the beneficial use of water without waste. The water user is advised that new regulations may require the use of best practical technologies or conservation practices to achieve this end.

By law, the land use associated with this water use must be in compliance with statewide land-use goals and any local acknowledged land-use plan.

The use of water shall be limited when it interferes with any prior surface or ground water rights.

Completion of construction and complete application of the water to the use shall be made on or before October 1, 2011. If the water is not completely applied before this date, and the permittee wishes to continue development under the permit, the permittee must submit an application for extension of time, which may be approved based upon the merit of the application.

Within one year after complete application of water to the proposed use, the permittee shall submit a claim of beneficial use, which includes a map and report, prepared by a Certified Water Rights Examiner (CWRE).

Issued July 19, 2007,

 for

Phillip C. Ward, Director  
Water Resources Department