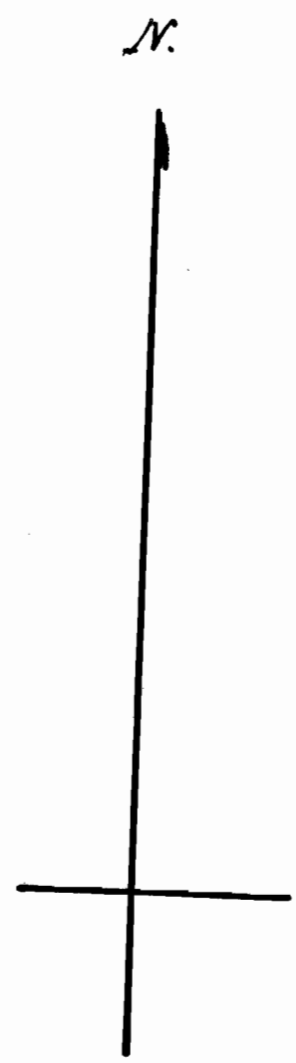


Tk. 2 N. R. 8 E. W. 7th.



es  
as  
W

Sec. Cor.  
1320 ft.

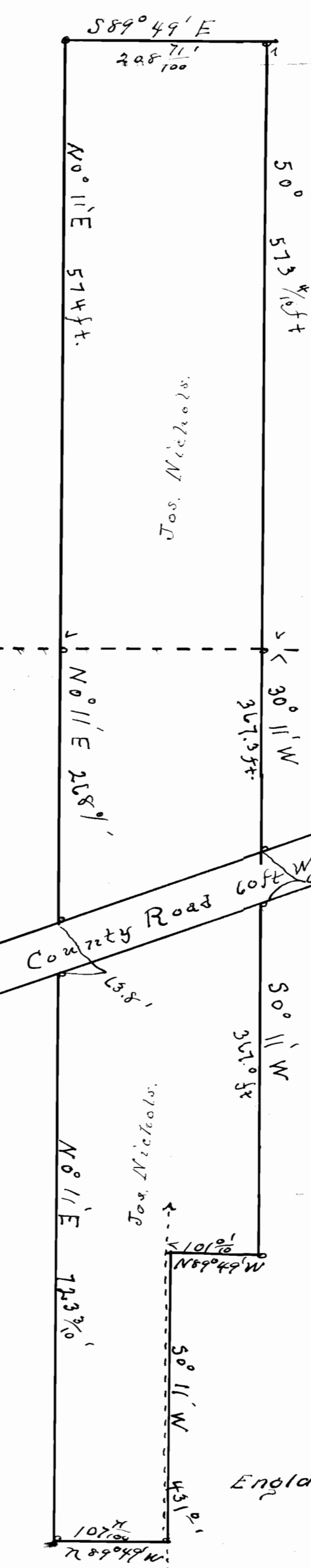
SE<sup>4</sup>SW<sup>4</sup> Sec. 6.

NE<sup>4</sup>NW<sup>4</sup> Sec. 7.

Application # 223  
Enlarge. - Permit # 14.

Joseph Nichols' Pipe Line.

Dry Creek



1/6  
12/7