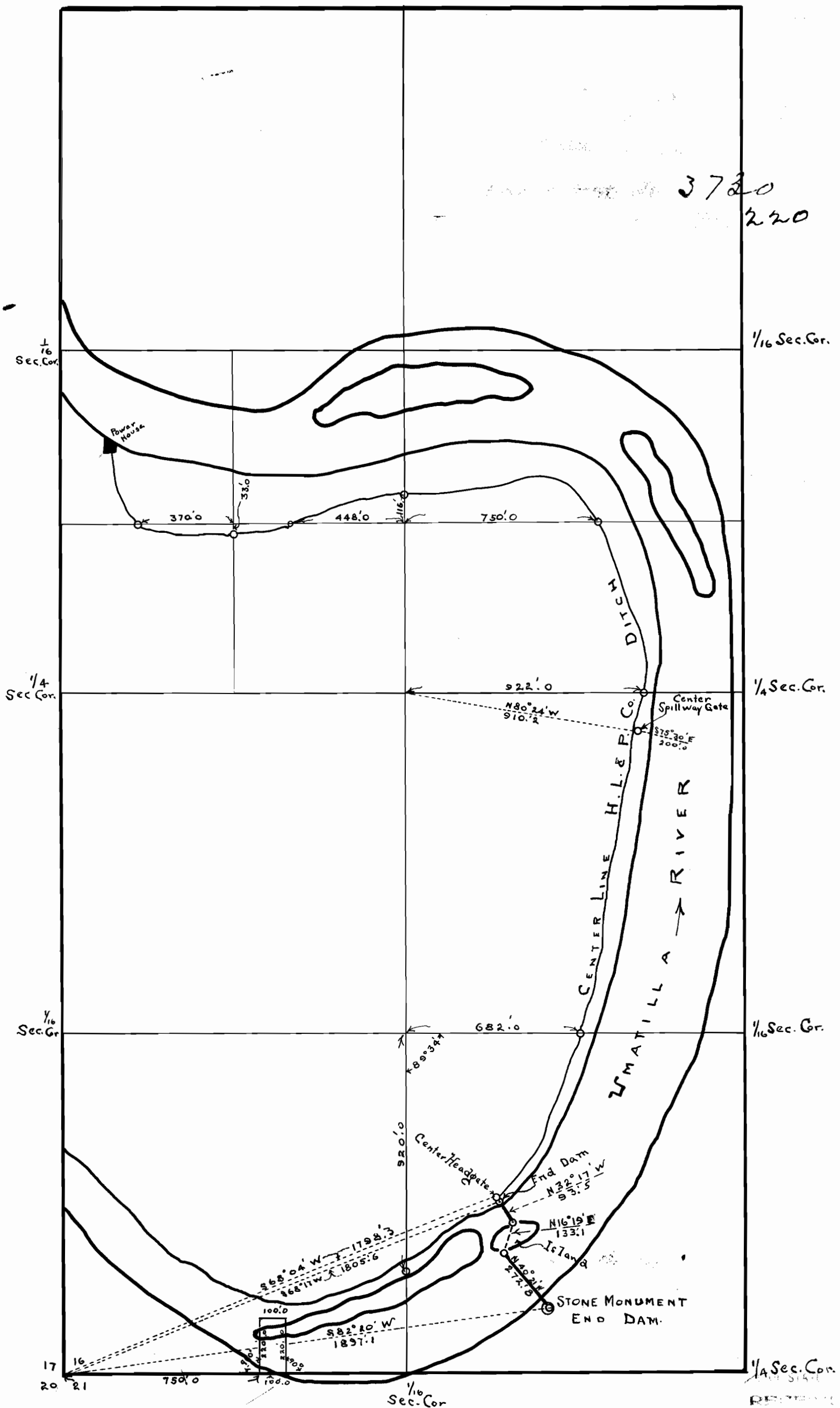


M A P
 WEST HALF SECTION 16. T 4 N - R 28 E. W.M.
 SHOWING LOCATION
 DAM - HEADGATE - DITCH - SPILLWAY - POWER HOUSE
 HERMISTON LIGHT & POWER CO.
 August 1913 SCALE 1" = 400.



I, C. S. McNaught of Hermiston Oregon
 DO HEREBY CERTIFY THAT THIS MAP AND ACCOMPANYING
 PROFILE WERE MADE FROM NOTES TAKEN DURING AN
 ACTUAL SURVEY MADE BY ME ON JULY 21 ~ 22 ~ 27 1913
 AND THAT THEY REPRESENT THE WORKS DESCRIBED IN THE
 ACCOMPANYING APPLICATION, TOGETHER WITH THE LOCATION
 OF THE UMATILLA RIVER ~ AND I FURTHER CERTIFY THAT
 THERE ARE NO DITCHES TAKING WATER FROM THE UMATILLA
 RIVER ON EITHER SIDE OF THE SAID RIVER BETWEEN THE
 BEGINNING AND ENDING POINTS OF THE DITCH OF THE
 HERMISTON LIGHT AND POWER COMPANY.

C. S. McNaught
 Application No. 3126
 Enlargement Permit No. 189

1/4 Sec. Cor.
 AUG 3 1913
 SALEM, - OREGON.