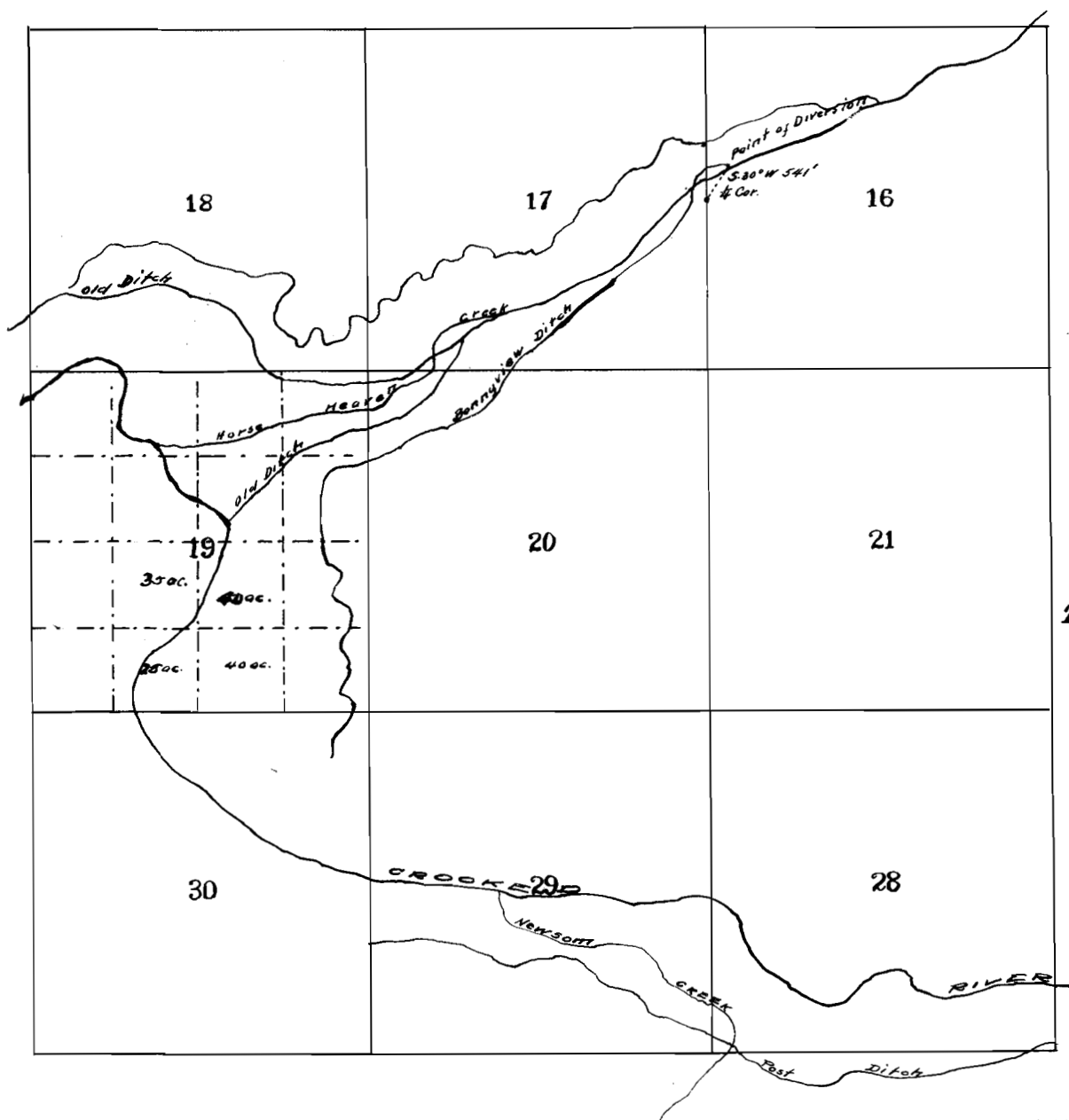


MAP OF
BONNYVIEW DITCH
SHOWING PROPOSED
ENLARGEMENT



Copy

I, Fred A. Rice, hereby certify that this map was made by me & from notes taken during an actual survey made by me on March 28, 29 and 30, 1910, and that it correctly represents the works described in the accompanying application together with the ~~(marks described in the account)~~ location of streams and other ditches in the immediate vicinity and has written thereon the area in each smallest legal subdivision which it is proposed to irrigate.

Fred A Rice
Surveyor.

T. 16S. R. 19E. WM.

OFFICE OF STATE ENGINEER
RECEIVED
JAN 15 1915
SALMON, OREGON

4056
2.735