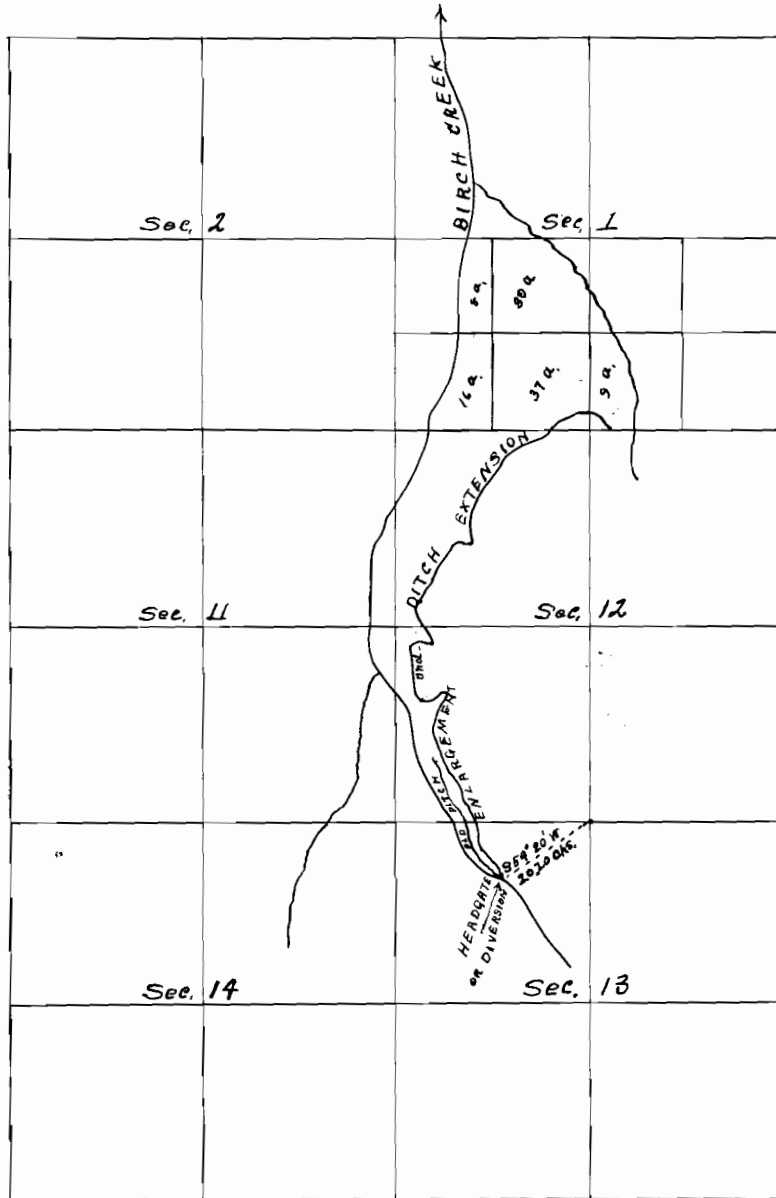


*MAP of H. Boylen's Irrigation Ditch  
Enlargement and extension  
In Sections 1-12 and 13 T. 2. S. R. 31. E. W. No.*



*I J. W. Kimbrell of Pendleton Or. do hereby certify that this map was made from notes taken during an actual survey made by me on the 4<sup>th</sup> day of April 1910 and that it correctly represents the DITCH Extension in the accompanying application together with the location of Streams and other ditches in the immediate vicinity and has written thereon the area in each smallest legal subdivision which it is proposed to irrigate*

*John W Kimbrell*

County Surveyor

**Application No. 654**

**Enlargement Permit No. 46**



Scale 40. Chs. 1"