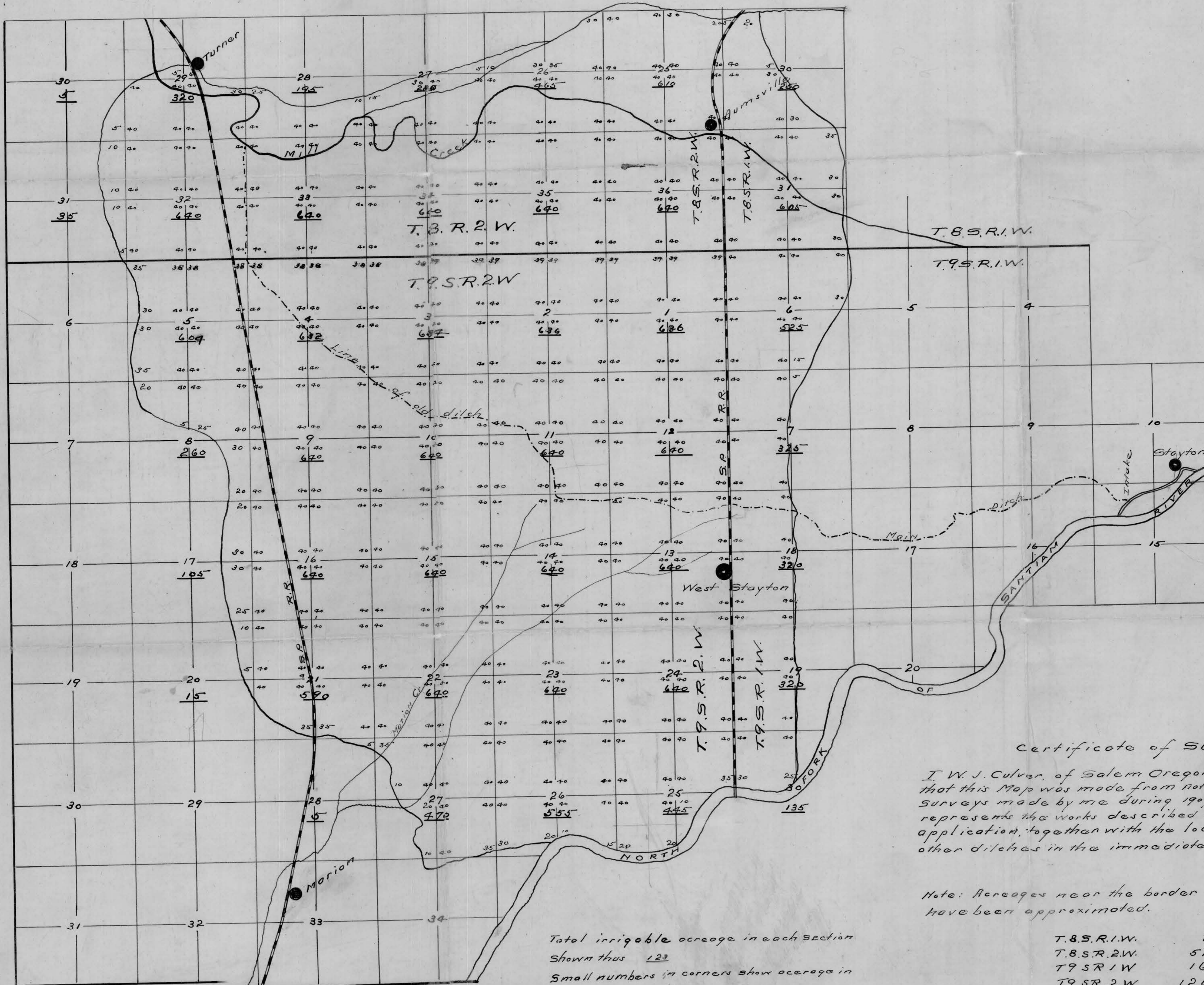


FULLACRES IRRIGATION DISTRICT. IRRIGABLE ACREAGES

IN
T.8.^{2nd}S.9.S.R.1.^{2nd}W.2.W
MARION COUNTY OREGON.

Scale: 1 inch = 40 Chains.



Certificate of Surveyor.

I, W. J. Culver, of Salem Oregon hereby certify that this Map was made from notes taken during actual surveys made by me during 1909 and 1910 and that it correctly represents the works described in the accompanying application, together with the location of streams and other ditches in the immediate vicinity.

W. J. Culver.

Note: Acreages near the border of the District have been approximated.

Total irrigable acreage in each section shown thus 122
Small numbers in corners show acreage in corresponding 70.

T.8.S.R.1.W.	855 Acres
T.8.S.R.2.W.	5120 "
T.9.S.R.1.W.	1625 "
T.9.S.R.2.W.	12627 "
	20,227 "

Application No. 81
Enlargement Permit No. 82

263,557