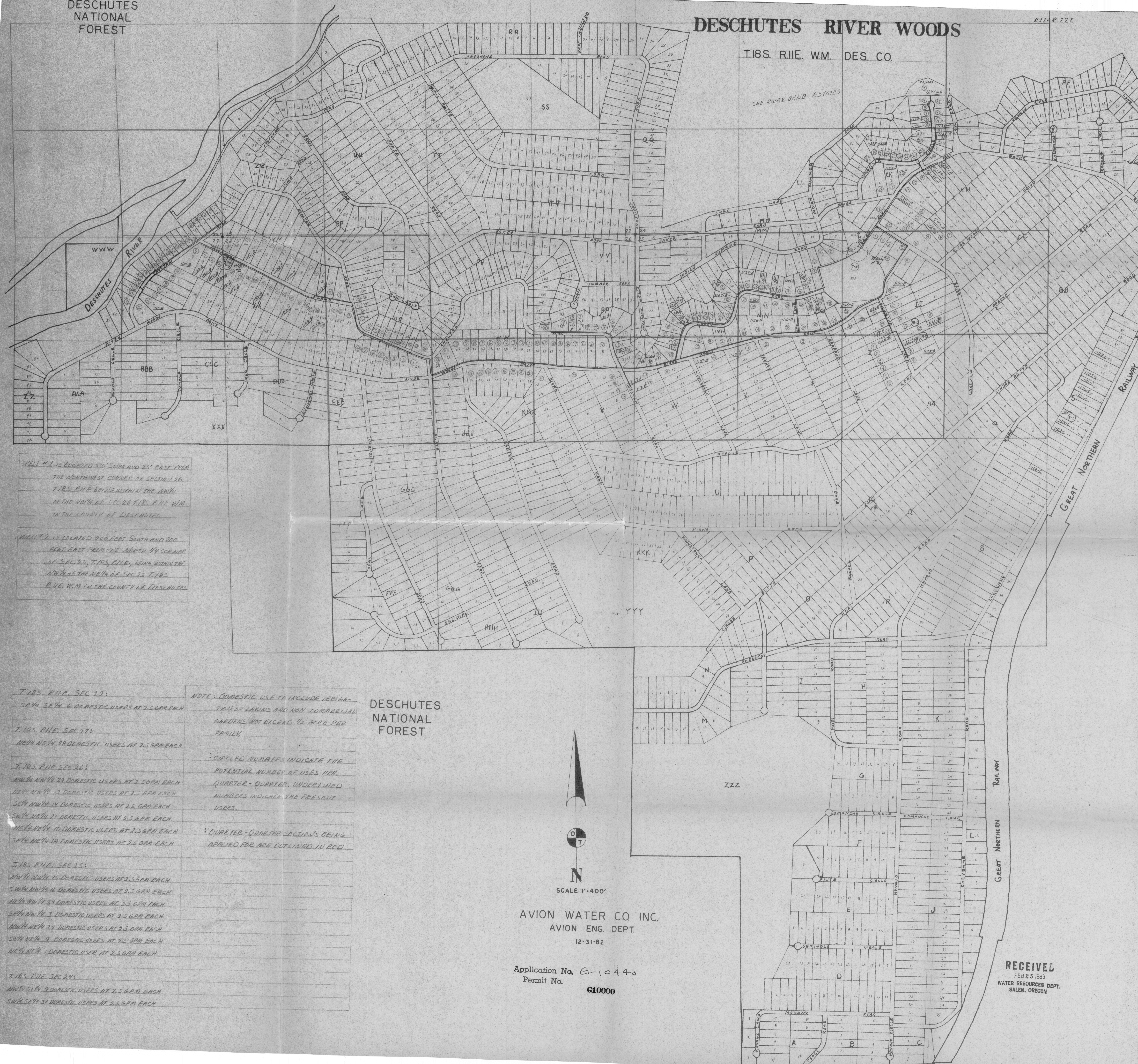


T.18S. R.11E. W.M. DES. CO.

SEE RIVER BEND ESTATES



WELL #1 IS LOCATED 300' SOUTH AND 75' EAST FROM THE NORTHWEST CORNER OF SECTION 26 T.18S. R.11E. BEING WITHIN THE NW/4 OF THE NW/4 OF SEC. 26 T.18S. R.11E. W.M. IN THE COUNTY OF DESCHUTES.

WELL #2 IS LOCATED 250 FEET SOUTH AND 200 FEET EAST FROM THE NORTH 1/4 CORNER OF SEC. 23, T.18S. R.11E, BEING WITHIN THE NW/4 OF THE NW/4 OF SEC. 23 T.18S. R.11E. W.M. IN THE COUNTY OF DESCHUTES.

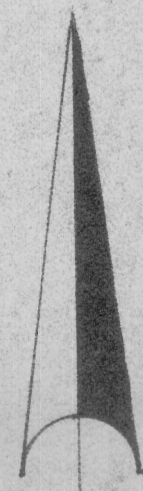
- T.18S. R.11E. SEC. 22:
SE/4 SE/4 6 DOMESTIC USERS AT 2.5 GPM EACH
- T.18S. R.11E. SEC. 21:
NE/4 NE/4 28 DOMESTIC USERS AT 2.5 GPM EACH
- T.18S. R.11E. SEC. 26:
NW/4 NW/4 29 DOMESTIC USERS AT 2.5 GPM EACH
SE/4 NW/4 12 DOMESTIC USERS AT 2.5 GPM EACH
SW/4 NW/4 21 DOMESTIC USERS AT 2.5 GPM EACH
NE/4 NE/4 10 DOMESTIC USERS AT 2.5 GPM EACH
SE/4 NE/4 18 DOMESTIC USERS AT 2.5 GPM EACH
- T.18S. R.11E. SEC. 25:
NW/4 NW/4 15 DOMESTIC USERS AT 2.5 GPM EACH
SW/4 NW/4 14 DOMESTIC USERS AT 2.5 GPM EACH
NE/4 NW/4 24 DOMESTIC USERS AT 2.5 GPM EACH
SE/4 NW/4 3 DOMESTIC USERS AT 2.5 GPM EACH
NW/4 NE/4 24 DOMESTIC USERS AT 2.5 GPM EACH
SW/4 NE/4 9 DOMESTIC USERS AT 2.5 GPM EACH
NE/4 NW/4 1 DOMESTIC USER AT 2.5 GPM EACH
- T.18S. R.11E. SEC. 24:
NW/4 SE/4 9 DOMESTIC USERS AT 2.5 GPM EACH
SW/4 SE/4 21 DOMESTIC USERS AT 2.5 GPM EACH

NOTE: DOMESTIC USE TO INCLUDE IRRIGATION OF LAWNS AND NON-COMMERCIAL GARDENS NOT EXCEED 1/8 ACRE PER FAMILY.

CIRCLED NUMBERS INDICATE THE POTENTIAL NUMBER OF USES PER QUARTER-QUARTER. UNDERLINED NUMBERS INDICATE THE PRESENT USERS.

QUARTER-QUARTER SECTIONS BEING APPLIED FOR ARE OUTLINED IN RED.

DESCHUTES NATIONAL FOREST



SCALE: 1"=400'

AVION WATER CO. INC.
AVION ENG. DEPT.
12-31-82

Application No. G-10440
Permit No. 610000

RECEIVED
FEB 25 1983
WATER RESOURCES DEPT.
SALEM, OREGON