

# CHAPARRAL

LOCATED IN T.15S. R.12E SEC.36 W.M. DES. CO.

SEE NW 1/4 SEC 36 T.15S R.12E.

E12 R13E

WELL # 1 IS LOCATED 1230 FEET NORTH AND 948 FEET EAST FROM THE S 1/4 CORNER OF SEC. 36 T.15S. R.12E, BEING WITHIN THE SW 1/4 OF THE SE 1/4 OF SEC. 36, T.15S. R.12E, W.M., IN THE COUNTY OF DESCHUTES.

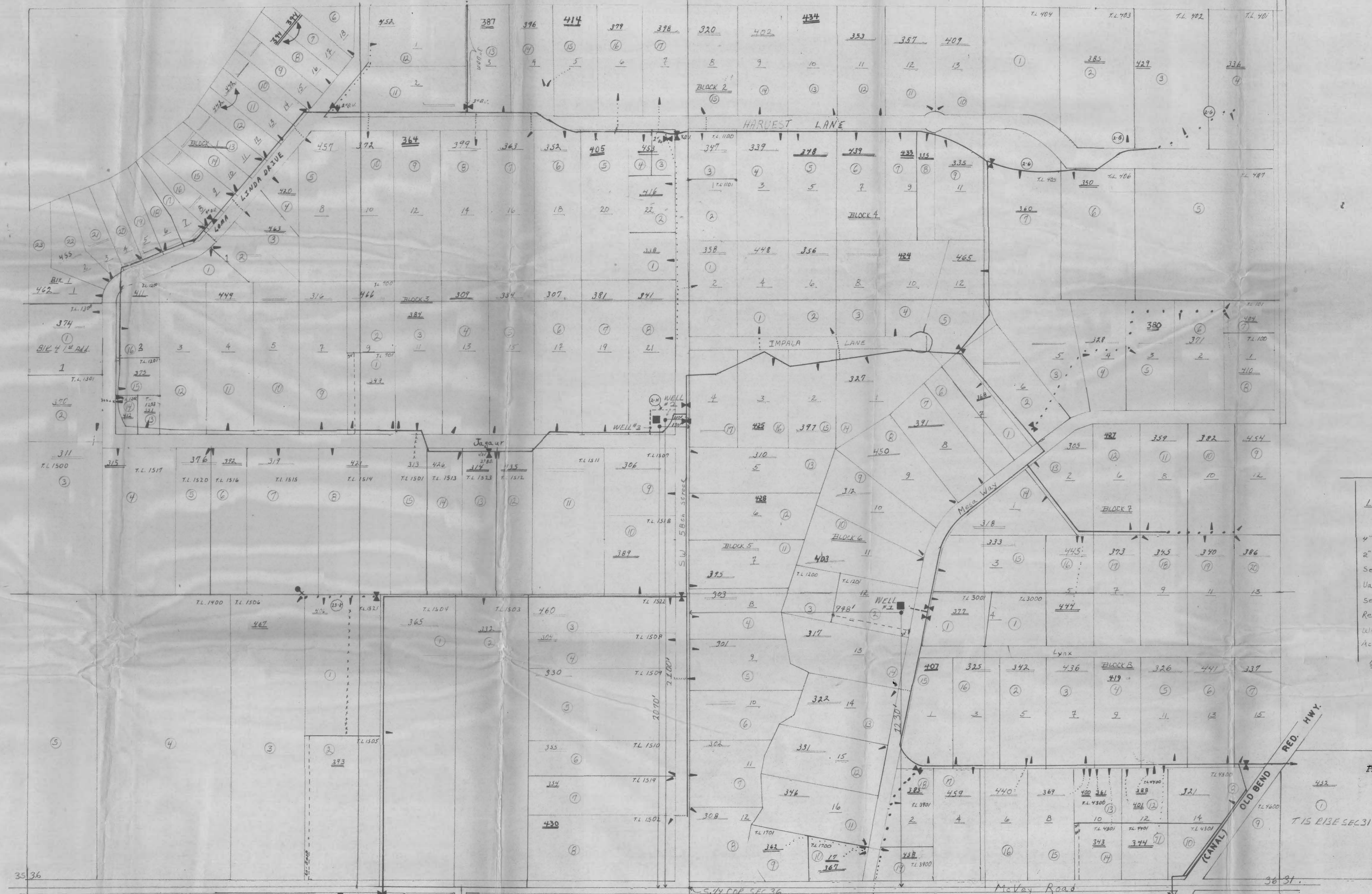
WELL # 2 IS LOCATED 2100 FEET NORTH AND 110 FEET WEST FROM THE S 1/4 CORNER OF SEC. 36, T.15S. R.12E, BEING WITHIN THE NE 1/4 OF THE SW 1/4 OF SEC. 36, T.15S. R.12E, W.M. IN THE COUNTY OF DESCHUTES.

WELL # 3 IS LOCATED 2070 FEET NORTH AND 130 FEET WEST FROM THE S 1/4 CORNER OF SEC. 36, T.15S. R.12E, BEING WITHIN THE NE 1/4 OF THE SW 1/4 OF SEC. 36 T.15S. R.12E, W.M. IN THE COUNTY OF DESCHUTES.

T.15S. R.12E. SEC 36:  
SW 1/4 NW 1/4 23 DOMESTIC USERS AT 2.5 GPM EACH  
SE 1/4 NW 1/4 17 DOMESTIC USERS AT 2.5 GPM EACH  
SW 1/4 NE 1/4 15 DOMESTIC USERS AT 2.5 GPM EACH  
SE 1/4 NE 1/4 5 DOMESTIC USERS AT 2.5 GPM EACH  
NW 1/4 SW 1/4 16 DOMESTIC USERS AT 2.5 GPM EACH  
SW 1/4 SW 1/4 5 DOMESTIC USERS AT 2.5 GPM EACH  
NE 1/4 SW 1/4 18 DOMESTIC USERS AT 2.5 GPM EACH  
SE 1/4 SW 1/4 8 DOMESTIC USERS AT 2.5 GPM EACH  
NW 1/4 SE 1/4 17 DOMESTIC USERS AT 2.5 GPM EACH  
SW 1/4 SE 1/4 19 DOMESTIC USERS AT 2.5 GPM EACH  
NE 1/4 SE 1/4 20 DOMESTIC USERS AT 2.5 GPM EACH  
SE 1/4 SE 1/4 16 DOMESTIC USERS AT 2.5 GPM EACH

T.15S. R.13E SEC. 31:  
SW 1/4 SW 1/4 1 DOMESTIC USER AT 2.5 GPM

NOTE: DOMESTIC USES TO INCLUDE IRRIGATION OF LAWNS AND NON-COMMERCIAL GARDENS NOT TO EXCEED 1/2 ACRE PER FAMILY.  
CIRCLED NUMBERS INDICATE NUMBER OF POTENTIAL USERS PER QUARTER-QUARTER SECTION. UNDERLINED NUMBERS INDICATE PRESENT USERS.



Scale 1" = 200'

**LEGEND**

- 4" Dom ————
- 2" Dom ······
- Service Line ————
- Valve ————
- Service ————
- Reservoir ■
- Well ●
- Account Number #

NOTE: GENERAL EASE SEE 13-L

Application No. G-10406  
Permit No. G10019

**RECEIVED**  
FEB 8 1983  
WATER RESOURCES DEPT.  
SALEM, OREGON

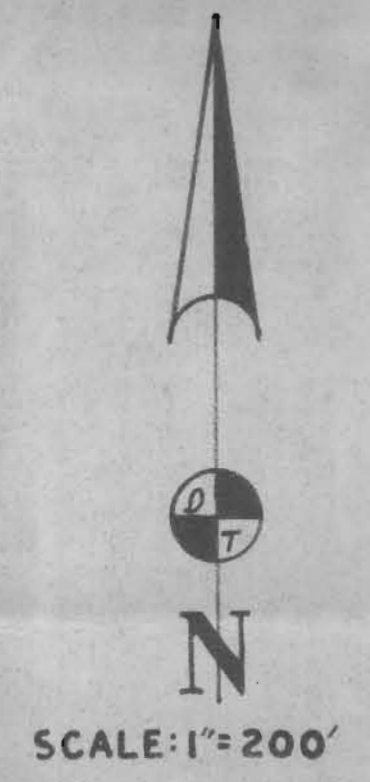
SEE E 1/2 SEC 2 T.16S. R.12E. W.M.      SEE W 1/2 SEC 1 T.16S. R.12E. W.M.      SEE E 1/2 SEC 1 T.16S. R.12E. W.M.

T.16S R.12E SEC 1:  
 GOVT. LOT #1 2 DOMESTIC USERS AT 2.5 GPM EACH  
 GOVT. LOT #2 4 DOMESTIC USERS AT 2.5 GPM EACH

NOTE: DOMESTIC USES TO INCLUDE IRRIGATION OF  
 LAWNS AND NON-COMMERCIAL GARDENS  
 NOT TO EXCEED 1/2 ACRE PER FAMILY.  
 CIRCLED NUMBERS INDICATE POTENTIAL USERS  
 UNDERLINED NUMBERS INDICATE PRESENT USERS

CHAPARRAL AREA  
 E.1/2 SEC.1 T.16S. R.12E. W.M. DES. CO.

AVION WATER CO. INC.  
 AVION ENG. DEPT.  
 8-10-82



LEGEND	
4' DOM	---
VALVE	X
SERVICE	-
ACCOUNT NO.	#

Application No. G-10466  
 Permit No. 610019

**RECEIVED**  
 FEB 8 1983  
 WATER RESOURCES DEPT.  
 SALEM, OREGON

W1/2 SEC.1 T.16 S. R.12 E. W.M. DES.CO.

16 12 10

AVION WATER CO. INC  
AVION ENG. DEPT.

P-3-82

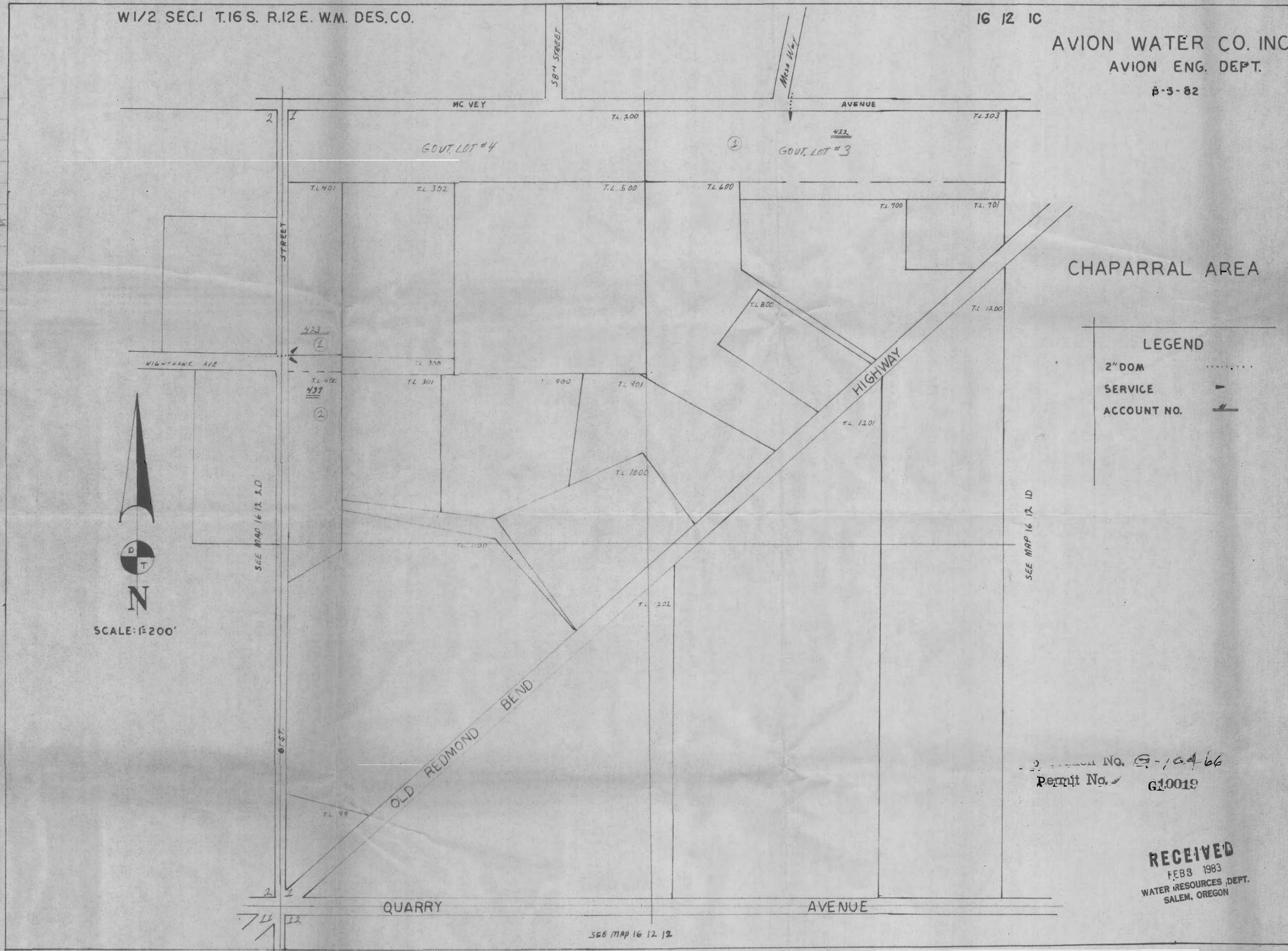
T.16 S. R.12 E. SEC. 1:

GOVT. LOT #3 1 DOMESTIC USER AT 2.5 GPM

NW 1/4 SW 1/4 2 DOMESTIC USERS AT 2.5 GPM EACH

NOTE: DOMESTIC USES TO INCLUDE IRRIGATION  
OF LAWNS AND NON-COMMERCIAL GARDENS  
NOT TO EXCEED 1/2 ACRE PER FAMILY

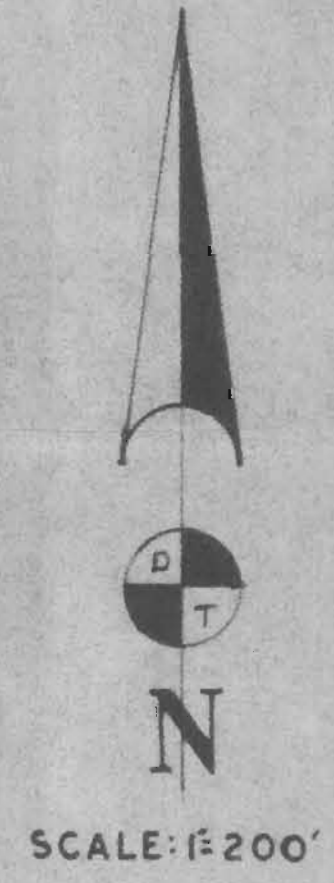
CIRCLED NUMBERS INDICATE POTENTIAL  
USER, UNDERLINED NUMBERS INDICATE  
PRESENT USERS.



CHAPARRAL AREA

LEGEND

2" DOM SERVICE	.....
ACCOUNT NO.	---





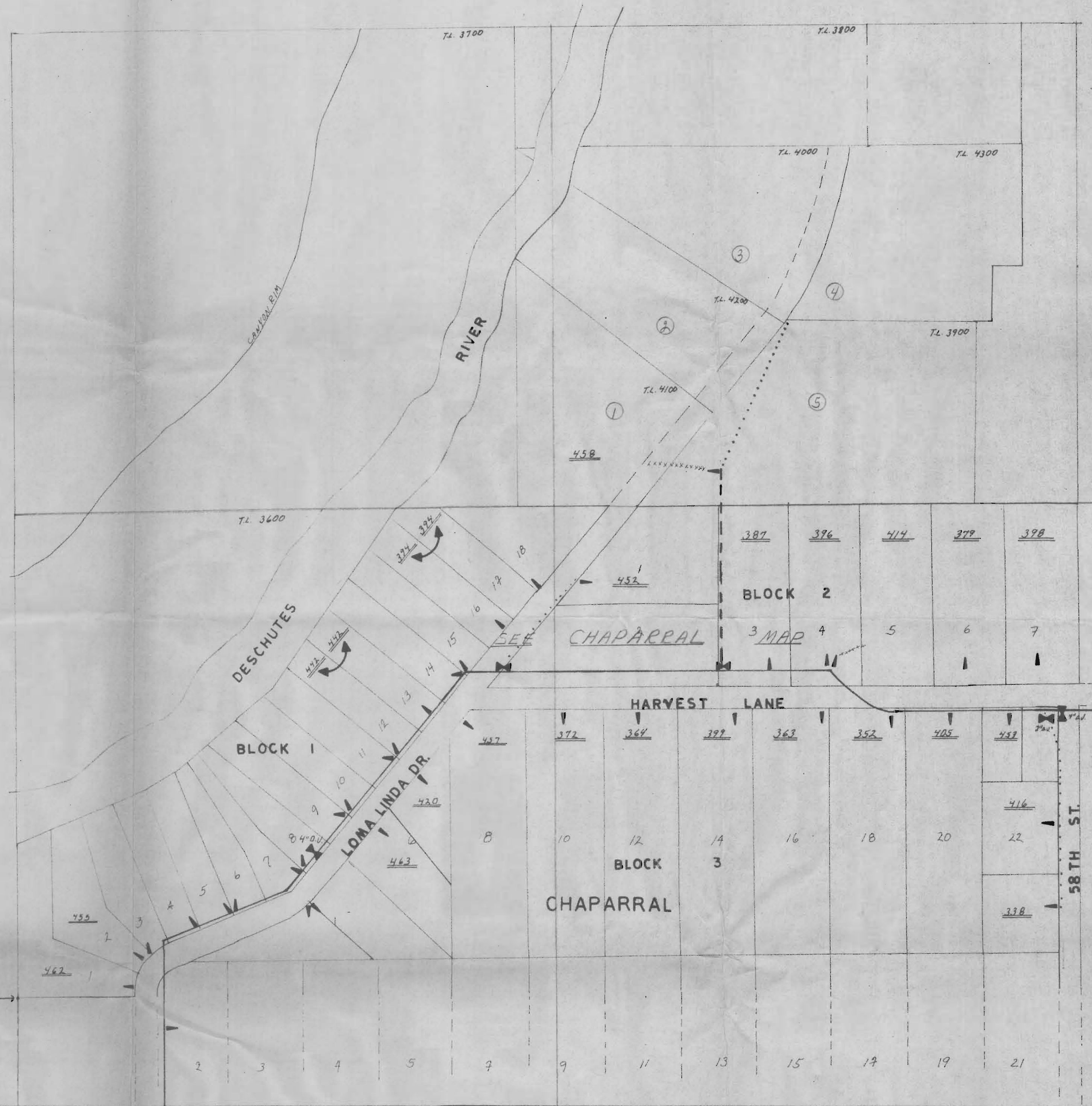
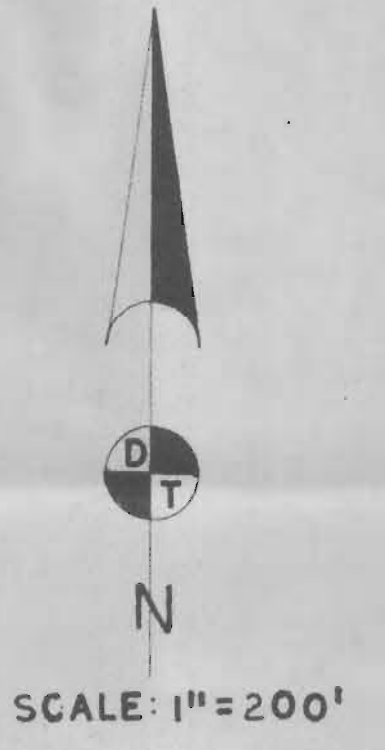
Permit No. 9-10466  
G10019

RECEIVED  
FEB 8 1983  
WATER RESOURCES DEPT.  
SALEM, OREGON

SEE MAP 16 12 12

T. 15 S. R. 12 E. SEC. 36:  
 NE 1/4 NW 1/4 5 DOMESTIC USERS AT 2.5 GPM EACH  
 NOTE: DOMESTIC USE TO INCLUDE IRRIGATION OF  
 LAWNS AND NON-COMMERCIAL GARDENS  
 NOT TO EXCEED 1/2 ACRE PER FAMILY.  
 : CIRCLED NUMBERS INDICATE POTENTIAL  
 USERS. UNDERLINED NUMBERS INDICATE  
 PRESENT USERS.

**LEGEND**  
 4" DOM. —————  
 2" DOM. ······  
 VALVE   
 SERVICE   
 3" DOM. - - - - -  
 ACCOUNT NO. #



Application No. G-10466  
 Permit No. G10019

**RECEIVED**  
 FEB 1983  
 WATER RESOURCES DEPT.  
 SALEM, OREGON

CHAPARRAL AREA  
 E. 1/2 SEC. 2 T. 16 S. R. 12 E. W.M. DES. CO.

SEE CHAPARRAL

T. 16 S. R. 12 E. SEC. 2:  
 GOVT. LOT #2 3 DOMESTIC USERS AT 2.5 GPM EACH  
 NE 1/4 SE 1/4 7 DOMESTIC USERS AT 2.5 GPM EACH  
 NOTE: DOMESTIC USES TO INCLUDE IRRIGATION  
 OF LAWNS AND NON-COMMERCIAL GAR-  
 DENS NOT TO EXCEED 1/2 ACRE PER FAM-  
 ILY.  
 : CIRCLED NUMBERS INDICATE POTENTIAL  
 USES. UNDERLINED NUMBERS INDICATE  
 PRESENT USERS.



SCALE: 1" = 200'

LEGEND

4" DOM	---
3" DOM	----
2" DOM	.....
SERVICE	▲
ACCOUNT NO.	#



Application No. 6100446  
 Permit No. 610019

RECEIVED  
 FEB 8 1983  
 WATER RESOURCES DEPT.  
 SALEM, OREGON