

6-10867, R-64419, 64420

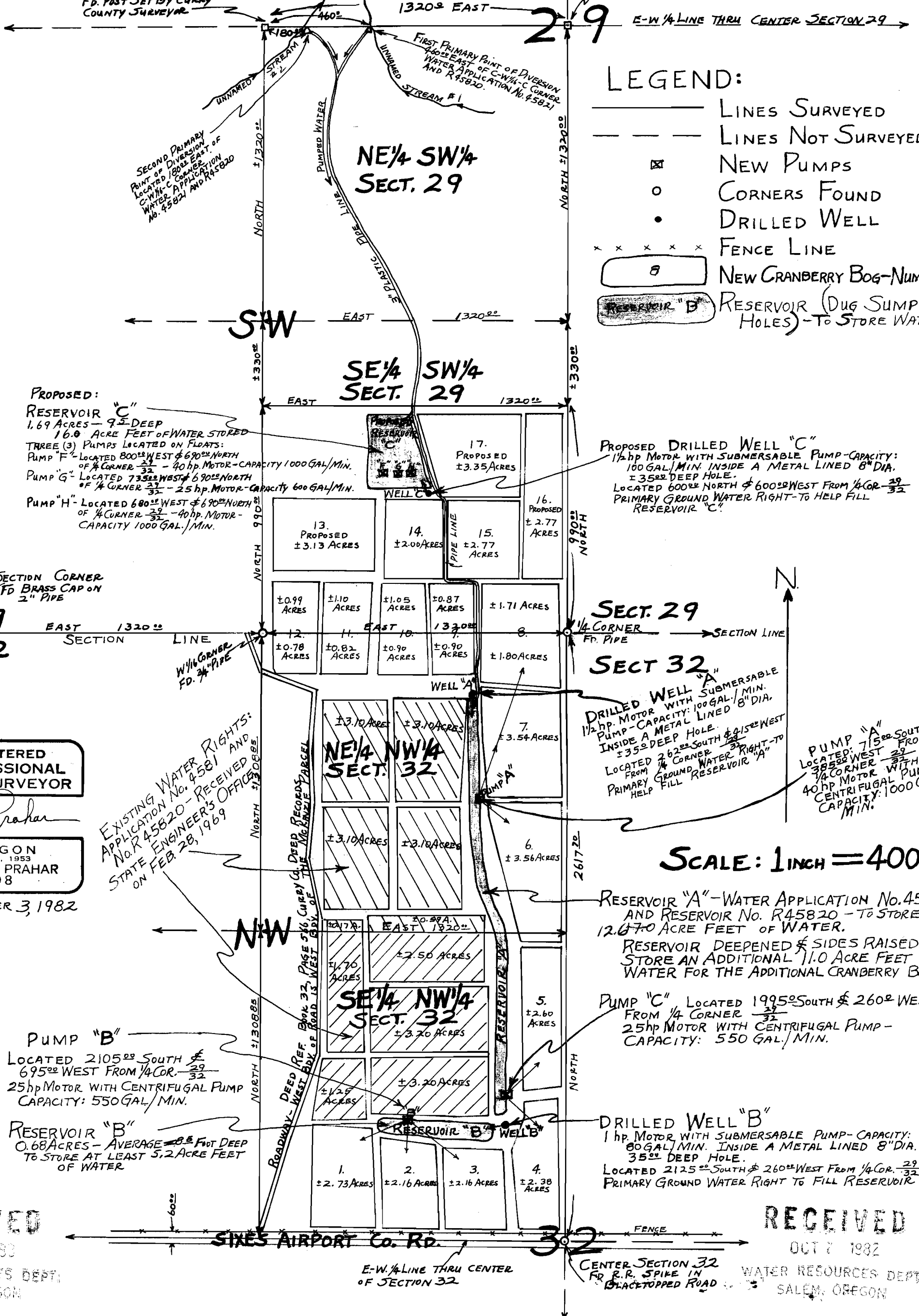
610027 R 8604 47420

APPLICATION FOR WATER RIGHTS

FOR ROBERT G. MCKENZIE, JR. SECTIONS 29 & 32, T.31S., R.15W.W.M.,
CURRY COUNTY, OREGON

C-W 1/4-C CORNER
FD. POST SET BY CURRY
COUNTY SURVEYOR

CENTER SECTION 29
FD. POST SET BY CURRY COUNTY SURVEYOR



LEGEND:

- LINES SURVEYED
- - - LINES NOT SURVEYED
- ⊠ NEW PUMPS
- CORNERS FOUND
- DRILLED WELL
- x x x x x FENCE LINE
- ⊡ NEW CRANBERRY BOG-NUMBERED
- ⊡ RESERVOIR "B" RESERVOIR (DUG SUMP HOLES) - TO STORE WATER

PROPOSED:
RESERVOIR "C"
 1.69 ACRES - 9.2 DEEP
 16.0 ACRE FEET OF WATER STORED
 THREE (3) PUMPS LOCATED ON FLOATS:
 PUMP "F" - LOCATED 800' WEST & 690' NORTH OF 1/4 CORNER 29-32 - 40 hp. MOTOR - CAPACITY 1000 GAL./MIN.
 PUMP "G" - LOCATED 735' WEST & 690' NORTH OF 1/4 CORNER 29-32 - 25 hp. MOTOR - CAPACITY 600 GAL./MIN.
 PUMP "H" - LOCATED 600' WEST & 690' NORTH OF 1/4 CORNER 29-32 - 40 hp. MOTOR - CAPACITY 1000 GAL./MIN.

PROPOSED DRILLED WELL "C"
 1/2 hp. MOTOR WITH SUBMERSABLE PUMP - CAPACITY: 100 GAL./MIN. INSIDE A METAL LINED 8" DIA. ± 35' DEEP HOLE. LOCATED 600' NORTH & 600' WEST FROM 1/4 CORNER 29-32 PRIMARY GROUND WATER RIGHT - TO HELP FILL RESERVOIR "C"

DRILLED WELL "A"
 1/2 hp. MOTOR WITH SUBMERSABLE PUMP - CAPACITY: 100 GAL./MIN. INSIDE A METAL LINED 8" DIA. ± 35' DEEP HOLE. LOCATED 262' SOUTH & 415' WEST FROM 1/4 CORNER 29-32 PRIMARY GROUND WATER RIGHT - TO HELP FILL RESERVOIR "A"

PUMP "A"
 LOCATED 715' SOUTH & 385' WEST FROM 1/4 CORNER 29-32 40 hp. MOTOR WITH CENTRIFUGAL PUMP CAPACITY: 1000 GAL./MIN.

SCALE: 1 INCH = 400 FT.

RESERVOIR "A" - WATER APPLICATION NO. 45821 AND RESERVOIR NO. R45820 - TO STORE 12.67 ACRE FEET OF WATER.
 RESERVOIR DEEPEMED & SIDES RAISED TO STORE AN ADDITIONAL 11.0 ACRE FEET OF WATER FOR THE ADDITIONAL CRANBERRY BOGS.

RESERVOIR "B" - AVERAGE 8.5 FEET DEEP TO STORE AT LEAST 5.2 ACRE FEET OF WATER

PUMP "C" LOCATED 1995' SOUTH & 260' WEST FROM 1/4 CORNER 29-32 25 hp. MOTOR WITH CENTRIFUGAL PUMP - CAPACITY: 550 GAL./MIN.

DRILLED WELL "B"
 1 hp. MOTOR WITH SUBMERSABLE PUMP - CAPACITY: 80 GAL./MIN. INSIDE A METAL LINED 8" DIA. 35' DEEP HOLE. LOCATED 2125' SOUTH & 260' WEST FROM 1/4 CORNER 29-32 PRIMARY GROUND WATER RIGHT TO FILL RESERVOIR "B"

PUMP "B"
 LOCATED 2105' SOUTH & 695' WEST FROM 1/4 CORNER 29-32 25 hp. MOTOR WITH CENTRIFUGAL PUMP CAPACITY: 550 GAL./MIN.

RESERVOIR "B"
 0.68 ACRES - AVERAGE 8.5 FEET DEEP TO STORE AT LEAST 5.2 ACRE FEET OF WATER

REGISTERED PROFESSIONAL LAND SURVEYOR

Louis Prahar

OREGON NOV. 6, 1953 LOUIS B. PRAHAR 308

SEPTEMBER 3, 1982

EXISTING WATER RIGHTS: APPLICATION NO. 4581 AND NO. R45820 - RECEIVED AND ENGINEER'S OFFICE STATE ENGINEER FEB. 28, 1969

RECEIVED WATER RESOURCES DEPT. SALEM, OREGON

RECEIVED WATER RESOURCES DEPT. SALEM, OREGON

RECEIVED JAN 12 1982 WATER RESOURCES DEPT. SALEM, OREGON

RECEIVED OCT 7 1982 WATER RESOURCES DEPT. SALEM, OREGON