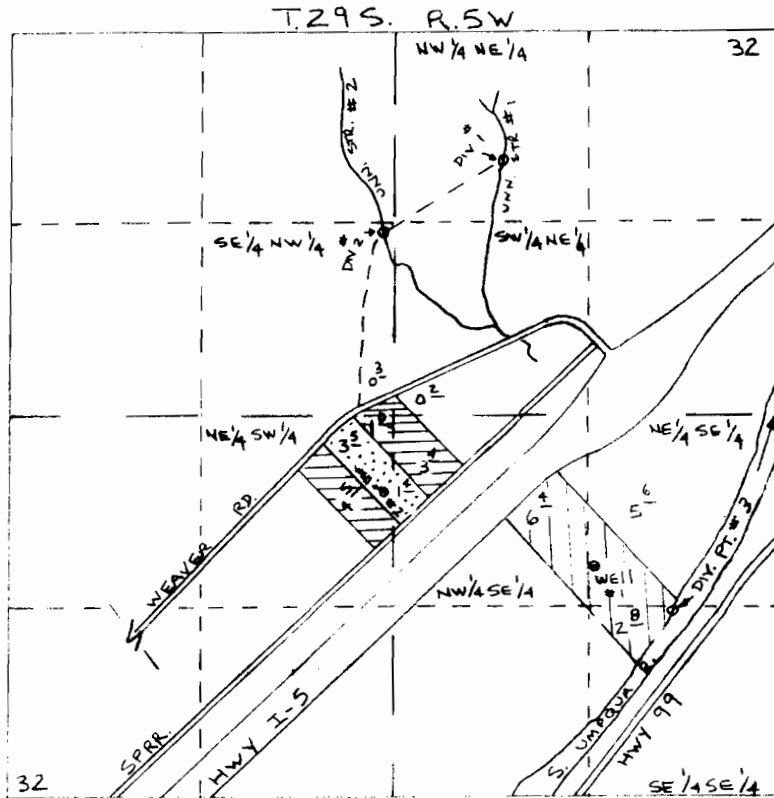


Application No. G-11048  
 Permit No. G10207

RECEIVED

AUG 5 1983


WATER RESOURCES DEPT.  
 SALEM, OREGON

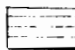


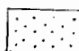
4" = 1 MILE

DIV. PT # 3 (RIVER) = 1270' N. & 760' W. FROM SE. COR. S. 32

WELL # 1 = 1600' N. 1300' W. FROM SE. COR. S. 32

 = LANDS WITH PRIMARY IRRIGATION FROM S. UMPQUA & SUPPLEMENTAL IRRIGATION FROM WELL.

 LANDS WITH PRIMARY IRRIGATION FROM WELL # 2 & SUPPLEMENTAL IRRIGATION FROM UNN. STR'S # 1 & # 2

 LANDS COVERED UNDER GR-2707 TO RECEIVE SUPPLEMENTAL IRRIGATION FROM UNN STR'S # 1 & # 2

WELL # 2 = 2100' N. & 2750' W. FROM SE. COR. S. 32

UNN STR # 1 DIV. PT = 4380' N. & 1930' W } FROM SE. COR. S. 32  
 UNN STR # 2 DIV. PT = 3890' N. & 2750' W }