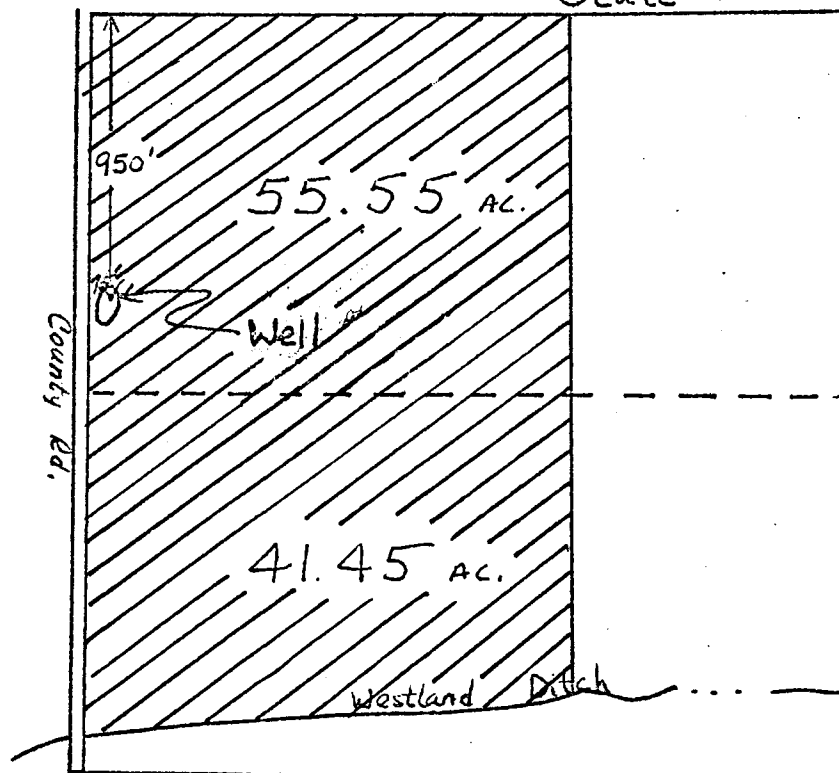




NW ¼, Sect. 18
T3N R29 EWM
Umatilla County

Scale 1" = 660'



RECEIVED
OCT 17 1983
WATER RESOURCES DEPT.
SALEM, OREGON

RECEIVED
MAY 23 1983
WATER RESOURCES DEPT.
SALEM, OREGON

Application No. G-10864
Permit No. G10222