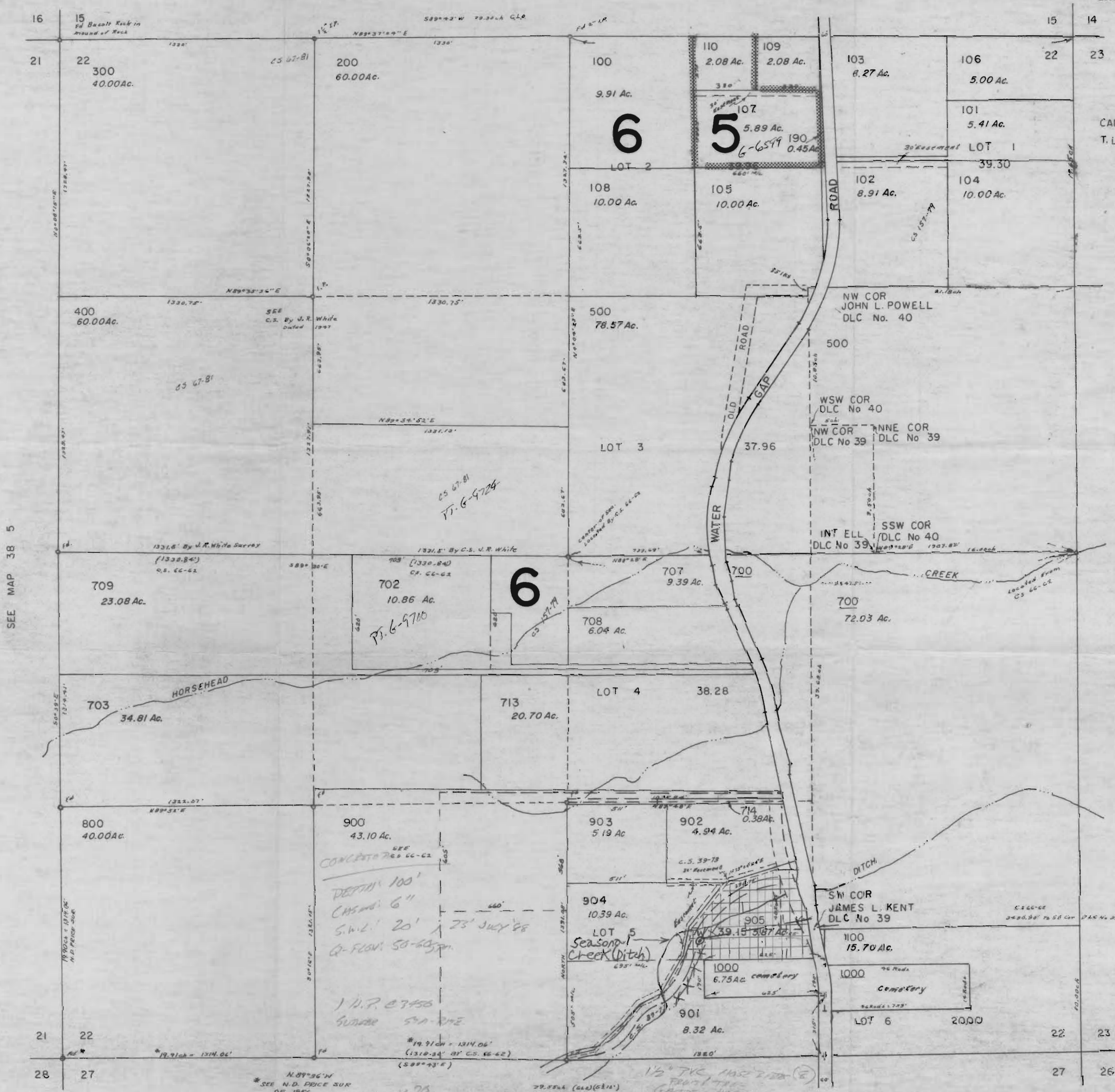


SECTION 22 T.38S. R.5W. W. M.  
JOSEPHINE COUNTY

1" = 400'

SEE MAP 38 5 15

RECEIVED  
DEC 1 1983  
WATER RESOURCES DEPT.  
SALEM, OREGON



CANCELLED  
T. L. 600  
990  
701  
991  
706  
790  
906  
704  
705  
710  
711  
712

SEE MAP 38 5

SEE MAP 38 5 23

SEE MAP 38 5 27

Application No. G-11140  
Permit No. G10263

W = Well; Located 605-ft. north & 682-ft. east from  
So. quarter corner of section 22.  
Daniel C. & Bette C. Botelet  
16792 Water Gap Rd.  
Williams, OR 97544  
Lot No. 905; 5.87 Acres for Irrigation