

YAMHILL COUNTY

RECEIVED

AERIAL 3DD 2

CANCELLED 4

SEE MAP 5 4 2

1" = 400'

MAY 1 1981
WATER RESOURCES DEPT.
SALEM, OREGON

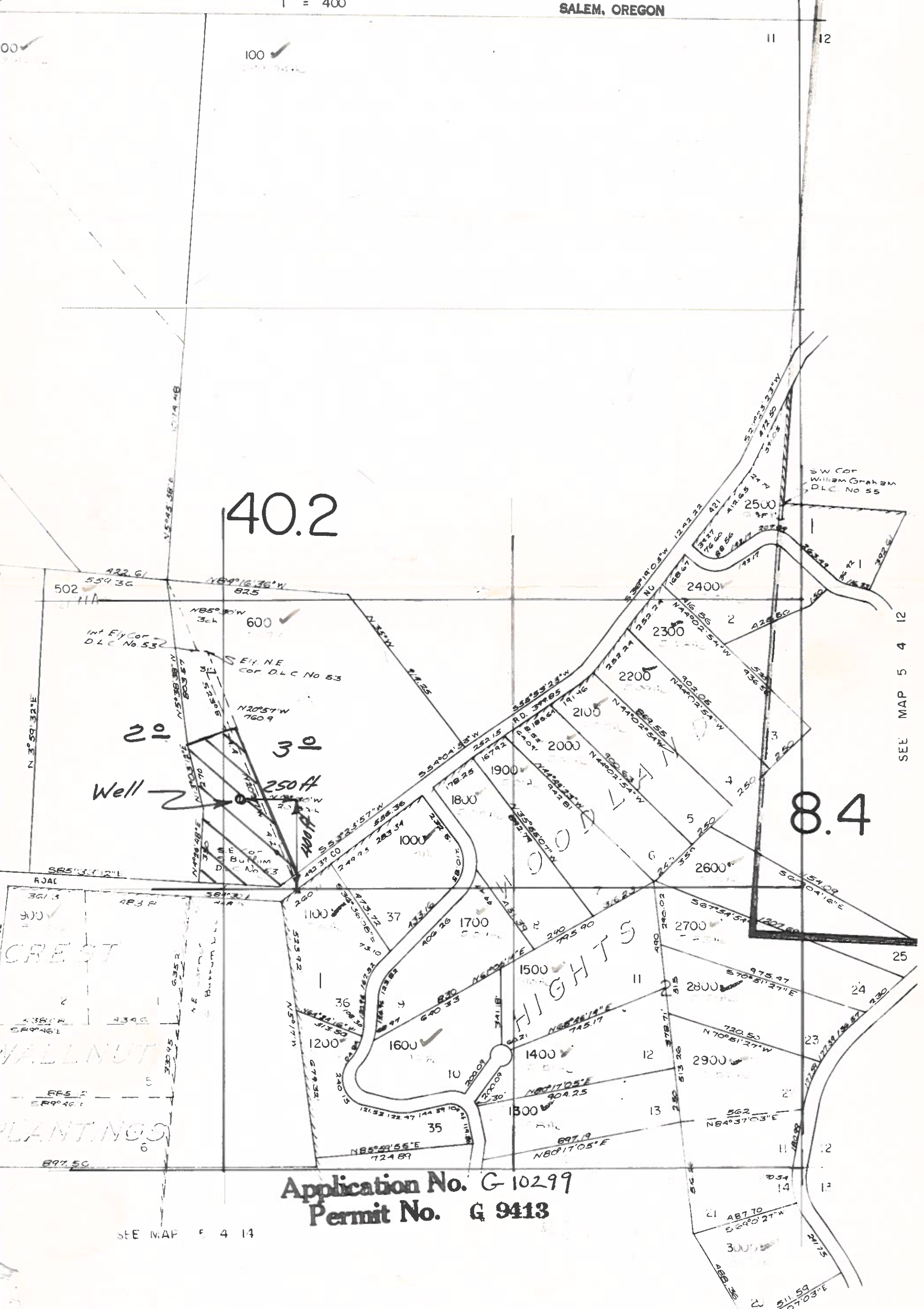
2 1
11 12

00 ✓
100 ✓

40.2

20
30
Well
250 ft

8.4



SEE MAP 5 4 12

Application No. G 10299
Permit No. G 9413

SEE MAP 5 4 14

10.4