

RECEIVED

SEP 29 1983
WATER RESOURCES DEPT.
SALEM, OREGON

RECEIVED

SEP 21 1984
WATER RESOURCES DEPT.
SALEM, OREGON

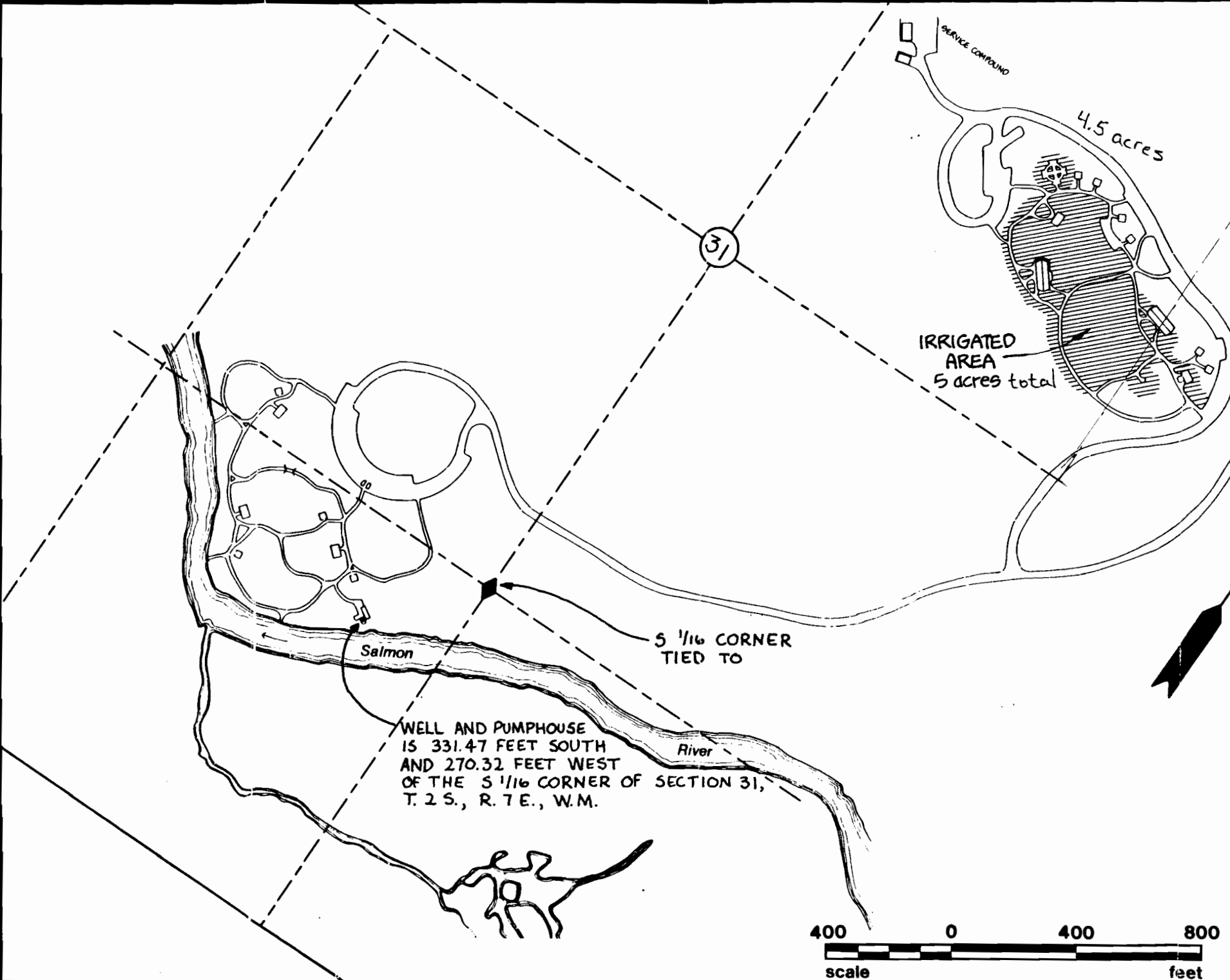
Application No. 61110
Permit No. G10361

U. S. DEPARTMENT OF THE INTERIOR
BUREAU OF LAND MANAGEMENT
Salem District - Oregon

WILDWOOD RECREATION SITE
LOCATION OF WELL

DESIGNED Salem D.O. - operations
REVIEWED [Signature]
APPROVED Feland Johnson

DRAWN G.S. SCALE 1" = 400'
DATE AUG. 1983 SHEET 1 OF 1
DRAWING NO. OR-080-9102.11



31

4.5 acres

IRRIGATED AREA
5 acres total

0.5 acres

SERVICE COMPOUND

Salmon

S 1/16 CORNER
TIED TO

River

WELL AND PUMPHOUSE
IS 331.47 FEET SOUTH
AND 270.32 FEET WEST
OF THE S 1/16 CORNER OF SECTION 31,
T. 2 S., R. 7 E., W.M.

400 0 400 800
scale feet

61110

Application No. 610361
Permit No. 610361

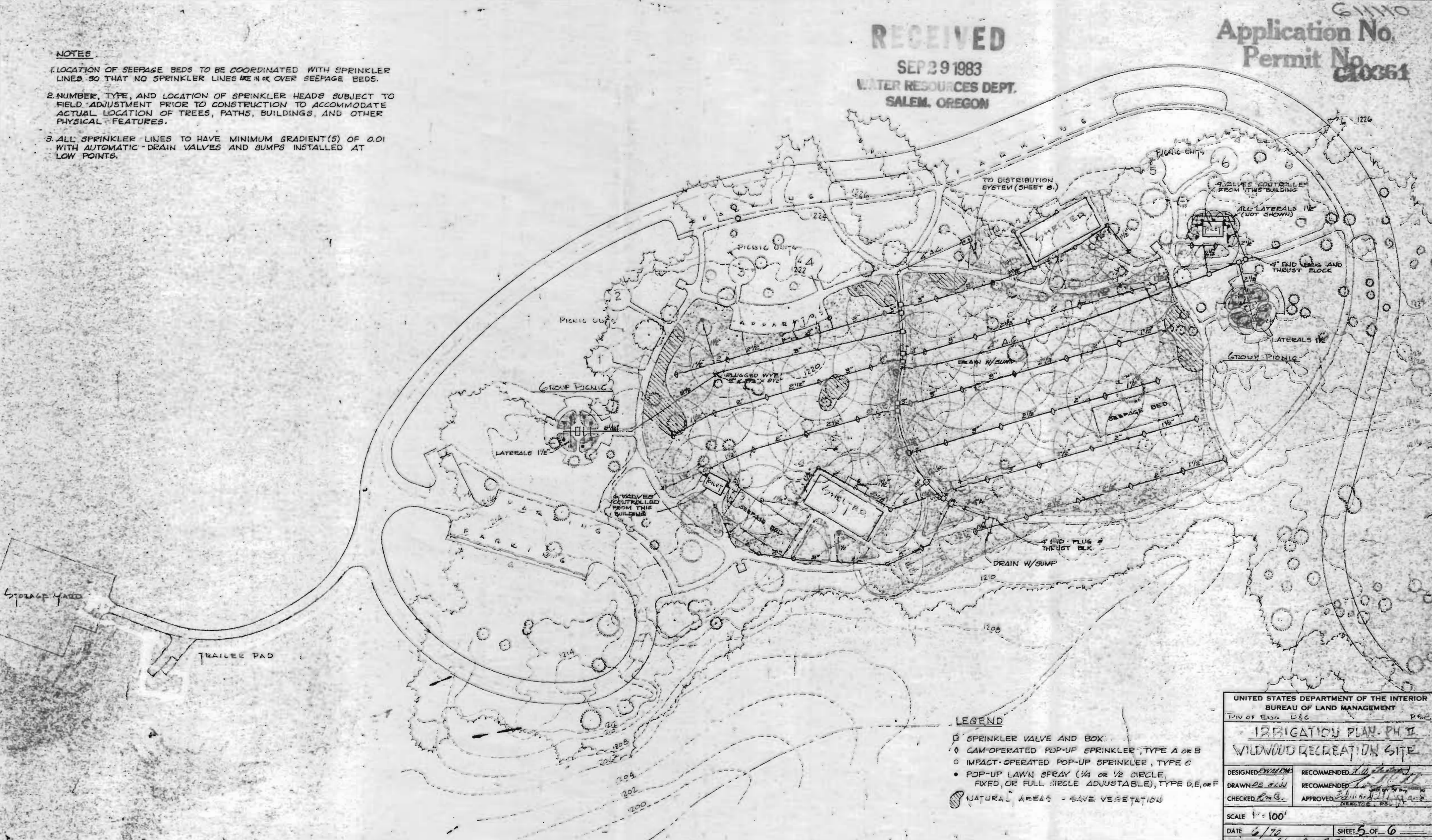
RECEIVED

SEP 29 1983

WATER RESOURCES DEPT.
SALEM, OREGON

NOTES

1. LOCATION OF SEEPAGE BEDS TO BE COORDINATED WITH SPRINKLER LINES SO THAT NO SPRINKLER LINES ARE IN OR OVER SEEPAGE BEDS.
2. NUMBER, TYPE, AND LOCATION OF SPRINKLER HEADS SUBJECT TO FIELD ADJUSTMENT PRIOR TO CONSTRUCTION TO ACCOMMODATE ACTUAL LOCATION OF TREES, PATHS, BUILDINGS, AND OTHER PHYSICAL FEATURES.
3. ALL SPRINKLER LINES TO HAVE MINIMUM GRADIENT(S) OF 0.01 WITH AUTOMATIC DRAIN VALVES AND BUMPS INSTALLED AT LOW POINTS.



LEGEND

- SPRINKLER VALVE AND BOX
- CAM-OPERATED POP-UP SPRINKLER, TYPE A OR B
- POP-UP LAWN SPRAY (1/4 OR 1/2 CIRCLE, FIXED, OR FULL CIRCLE ADJUSTABLE), TYPE D, E, OR F
- NATURAL AREAS - SAVE VEGETATION

UNITED STATES DEPARTMENT OF THE INTERIOR
BUREAU OF LAND MANAGEMENT
DIV OF ENG. DEC. PAGE

IRRIGATION PLAN - PH II
WILDWOOD RECREATION SITE

DESIGNED <i>[Signature]</i>	RECOMMENDED <i>[Signature]</i>
DRAWN <i>[Signature]</i>	RECOMMENDED <i>[Signature]</i>
CHECKED <i>[Signature]</i>	APPROVED <i>[Signature]</i>

SCALE 1" = 100'
DATE 6/70 SHEET 5 OF 6
DRAWING NO. 36-080-952

Application No. **G11110**
 Permit No. **G19361**

RECEIVED

SEP 29 1983
 WATER RESOURCES DEPT
 SALEM, OREGON

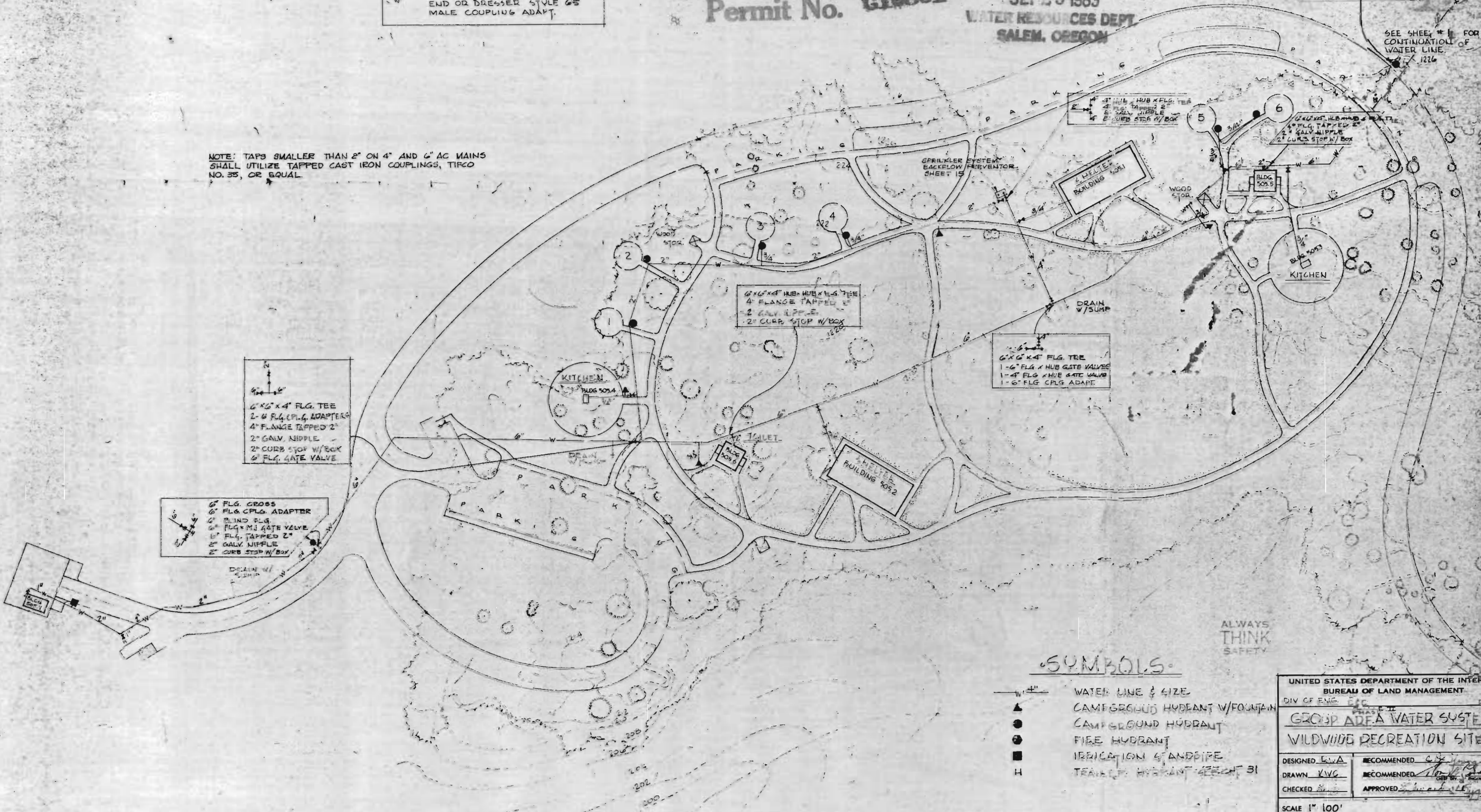
4" FLG TEE
 2" FLG CPLG ADAPT.
 6" FLG X M.J. GATE VALVE

TYPICAL AT IRRIGATION
 STANDPIPES ON 2" LINE:

2" STYLE 65 THREADED BRANCH TEE
 2" GALV. NIPPLE
 2" CURB STOP W/BOX
 2" X 8" GALV. NIPPLE THREADED ONE
 END OR DRESSER STYLE 65
 MALE COUPLING ADAPT.

NOTE: TAPS SMALLER THAN 2" ON 4" AND 6" AC MAINS
 SHALL UTILIZE TAPPED CAST IRON COUPLINGS, TIFCO
 NO. 35, OR EQUAL.

SEE SHEET # 1 FOR
 CONTINUATION OF
 WATER LINE.
 1226



6" X 6" X 4" FLG. TEE
 2-4 FLG. CPLG. ADAPTERS
 4" FLANGE TAPPED 2"
 2" GALV. NIPPLE
 2" CURB STOP W/BOX
 6" FLG. GATE VALVE

6" FLG. CROSS
 6" FLG. CPLG. ADAPTER
 6" BLIND FLG.
 6" FLG. X M.J. GATE VALVE
 6" FLG. TAPPED 2"
 2" GALV. NIPPLE
 2" CURB STOP W/BOX

6" X 6" X 4" HUB-HUB X 4" TEE
 4" FLANGE TAPPED 2"
 2" GALV. NIPPLE
 2" CURB STOP W/BOX

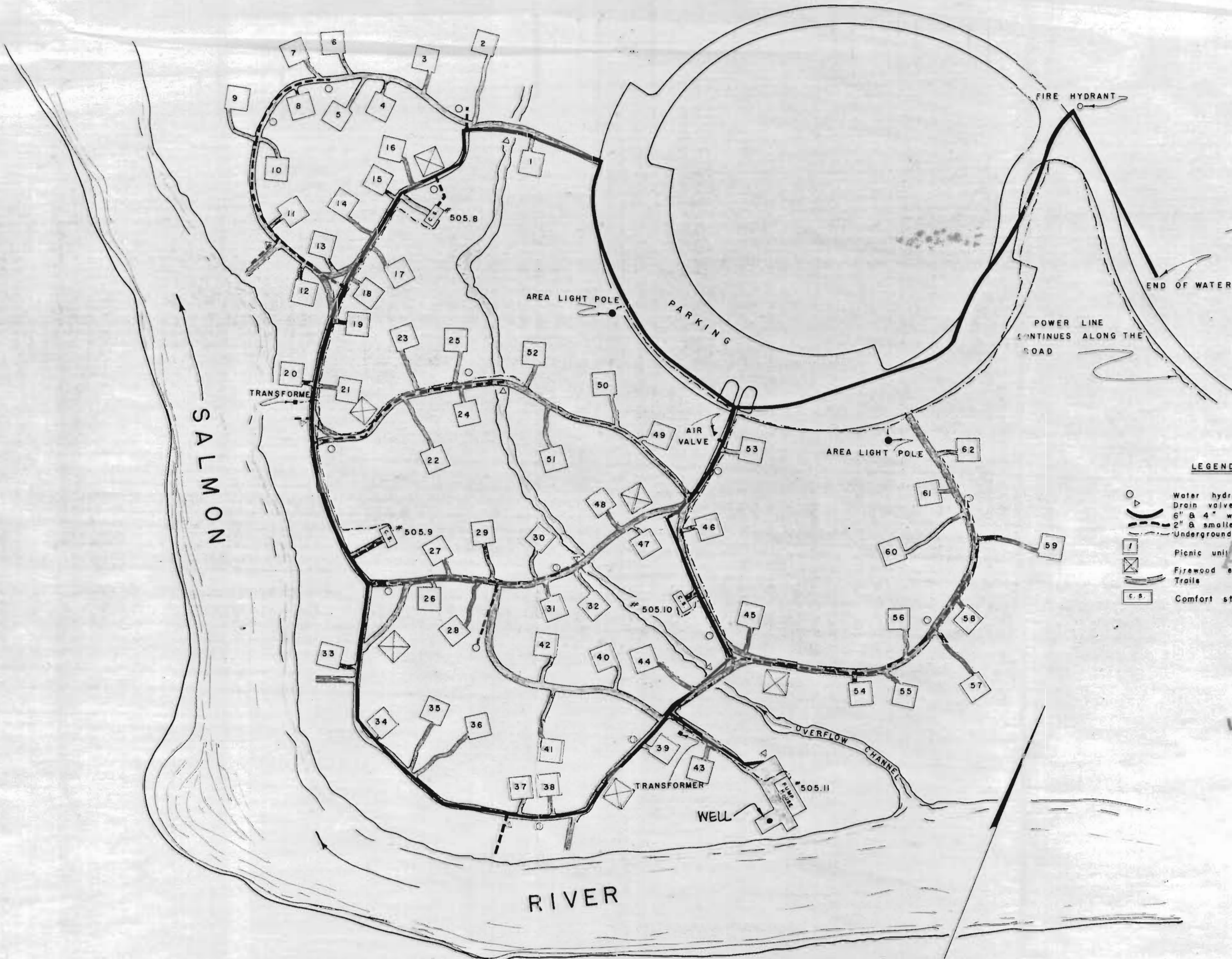
6" X 6" X 4" FLG. TEE
 1-6" FLG. X HUB GATE VALVE
 1-4" FLG. X HUB GATE VALVE
 1-6" FLG. CPLG. ADAPT.

ALWAYS
 THINK
 SAFETY

SYMBOLS

- 4" — WATER LINE & SIZE
- ▲ CAMPGROUND HYDRANT W/FOUNTAIN
- CAMPGROUND HYDRANT
- FIRE HYDRANT
- IRRIGATION STANDPIPE
- H TRAVELER HYDRANT - SHEET 31

UNITED STATES DEPARTMENT OF THE INTERIOR BUREAU OF LAND MANAGEMENT DIV. OF ENG. ETC.	
GROUP AREA WATER SYSTEM WILDWIND RECREATION SITE	
DESIGNED <i>LVA</i>	RECOMMENDED <i>[Signature]</i>
DRAWN <i>KVG</i>	RECOMMENDED <i>[Signature]</i>
CHECKED <i>[Signature]</i>	APPROVED <i>[Signature]</i>
SCALE 1" = 100'	
DATE 2/5/83	SHEET 4 OF 6
DRAWING NO. E-100-302	



SALMON RIVER

RIVER

FIRE HYDRANT

END OF WATER LINE

POWER LINE CONTINUES ALONG THE ROAD

AREA LIGHT POLE

PARKING

AIR VALVE

AREA LIGHT POLE

TRANSFORMER

TRANSFORMER

WELL

OVERFLOW CHANNEL

LEGEND

- Water hydrant
- Drain valve
- 6" & 4" water line
- 2" & smaller water line
- Underground power
- Picnic unit
- Firewood enclosure
- Trails
- Comfort station

Application No. G1110
 Permit No. G10361

RECEIVED
 SEP 29 1983
 WATER RESOURCES DEPT.
 SALEM, OREGON

NORTH

UNITED STATES DEPARTMENT OF THE INTERIOR
 BUREAU OF LAND MANAGEMENT
 SALEM, OREGON

AS - CONSTRUCTED
 WILDWOOD RECREATION SITE
 PHASE I (PICNIC AREA)

1"=100'