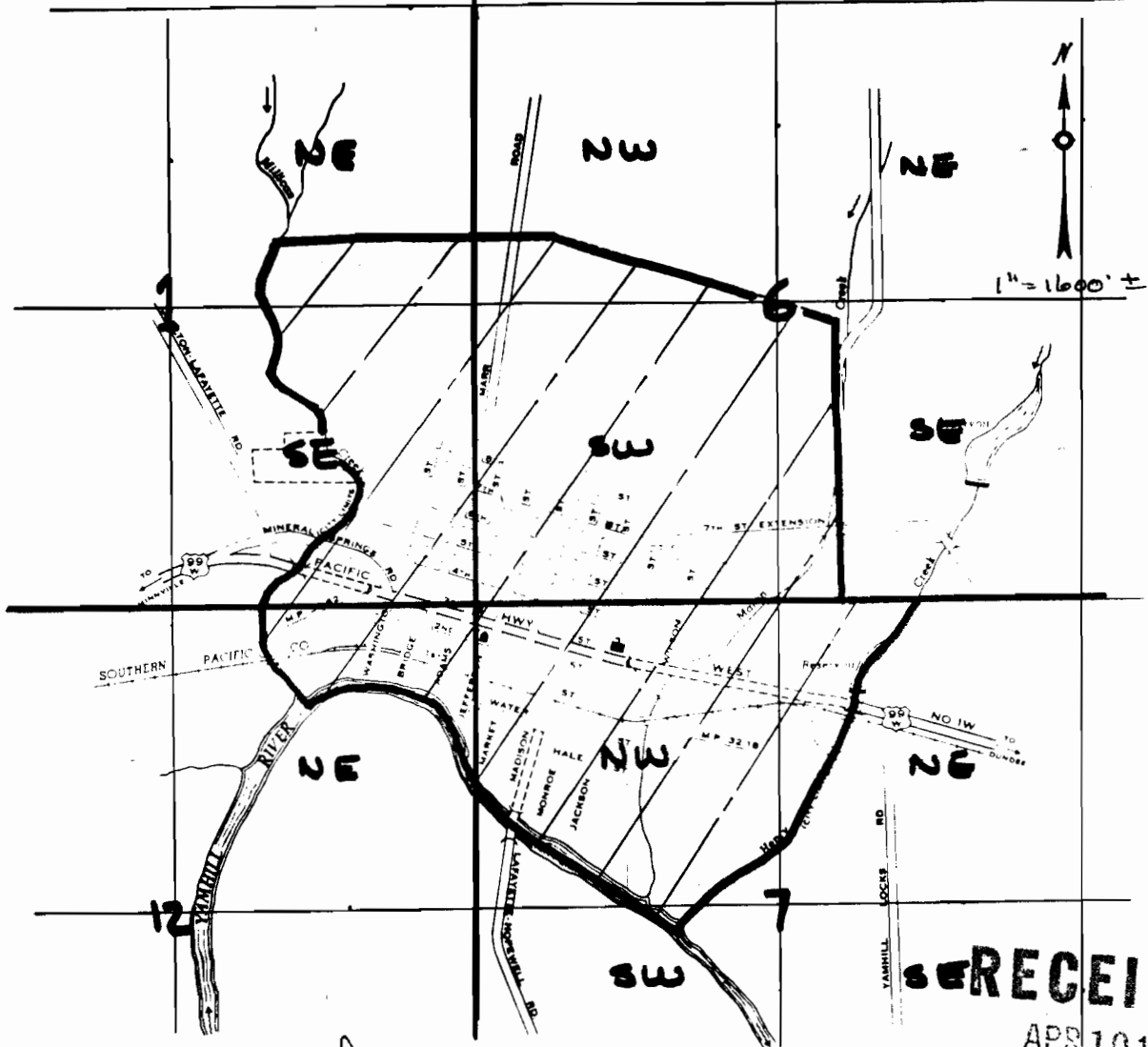


T 4 S., R 4 W., W.M.

T. 4 S. R 3 W., W.M.



Application No. *D-11258*
 Permit No. *G10399*

RECEIVED

APR 10 1984
 WATER RESOURCES DEPT.
 SALEM, OREGON

SIGNED ROUTES

INTERSTATE	
U.S.	
ORL	

LEGEND

	Post Office		Public Bldg.
	School		City Hall
	R. R. Depot		Court House
	Arms		Library
	Street open for travel.		Street dedicated but not open.
	City Limits.		

LAFAYETTE
 YAMHILL COUNTY, OREGON

PREPARED BY THE
 OREGON STATE HIGHWAY DEPARTMENT
 TRAFFIC ENGINEERING DIVISION
 IN COOPERATION WITH THE
 U.S. DEPARTMENT OF COMMERCE
 BUREAU OF PUBLIC ROADS

Population 563
 Scale in Feet

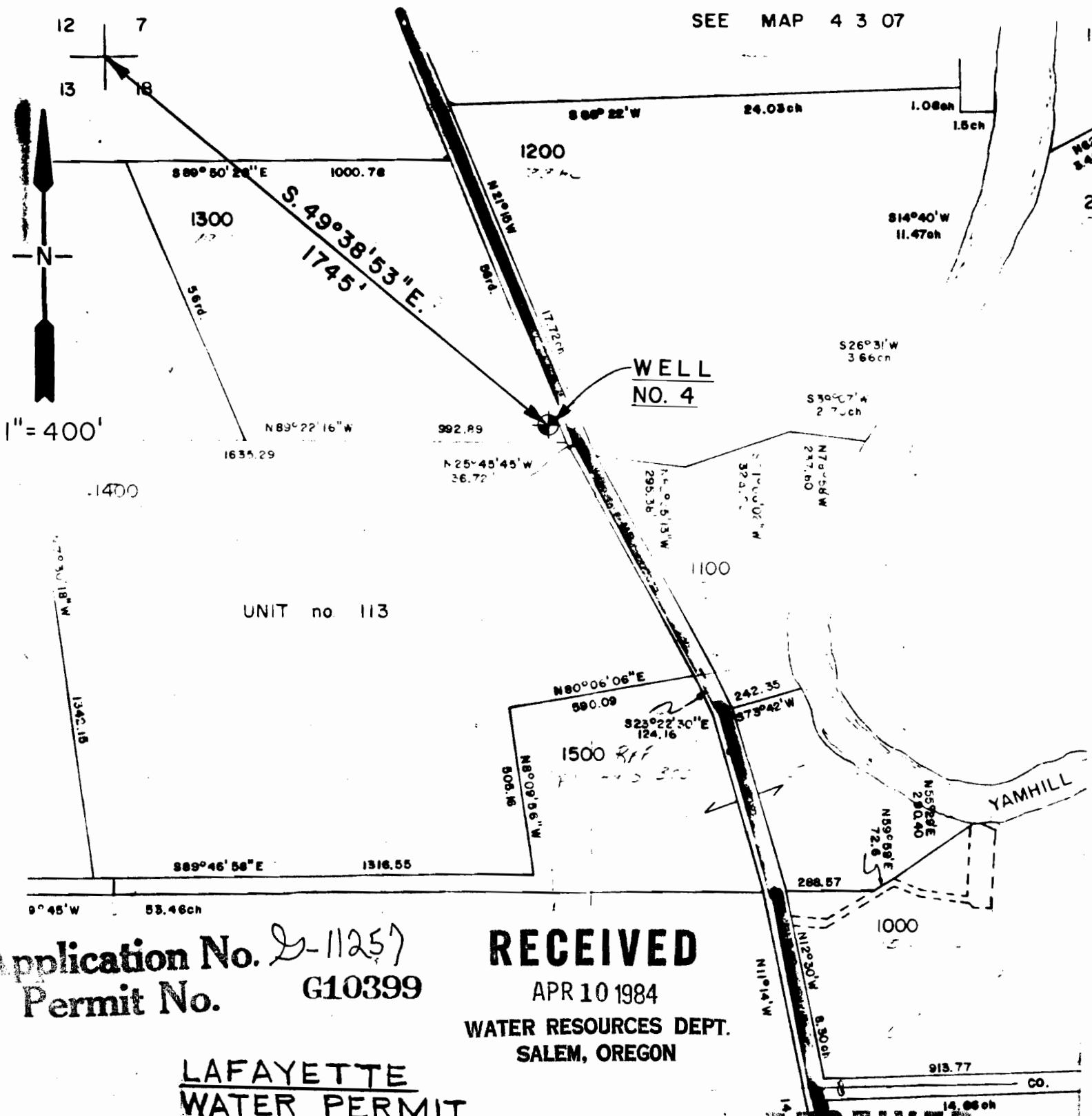
 NTS
 January 1, 1961

PLACE OF USE
 WATER PERMIT APPL.

655-410-33

T. 4 S., R. 3 W., W. M.

SEE MAP 4 3 07



Application No. *D-11257*
 Permit No. **G10399**

RECEIVED
 APR 10 1984
 WATER RESOURCES DEPT.
 SALEM, OREGON

LAFAYETTE
WATER PERMIT
 #655-W10-SS

RECEIVED
 JUN 20 1984
 WATER RESOURCES DEPT.
 SALEM, OREGON