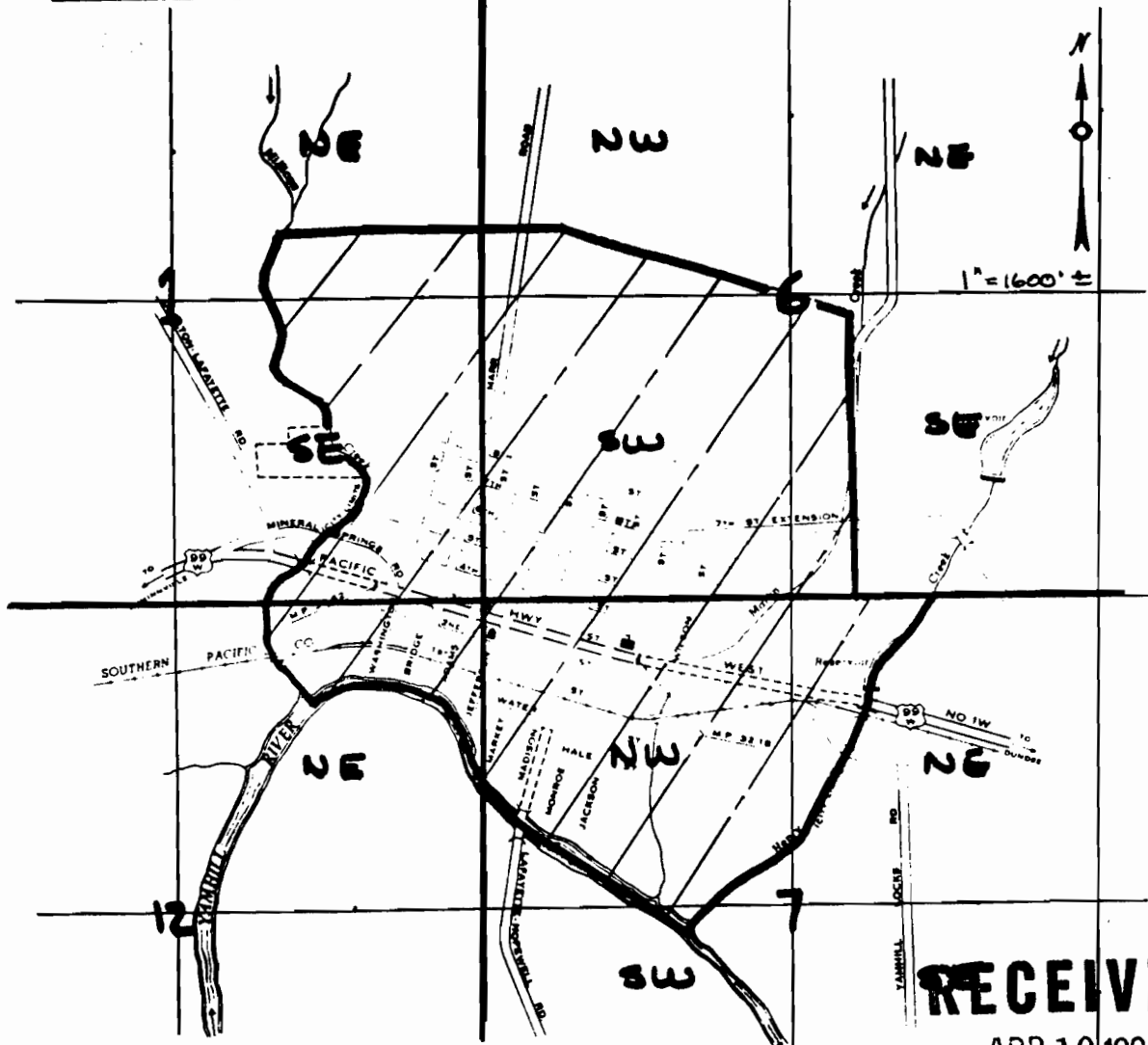


T. 4 S., R 4 W., W.M.

T. 4 S., R. 3 W., W.M.



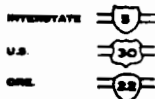
Application No. *G-11258*
 Permit No. **G10400**

RECEIVED

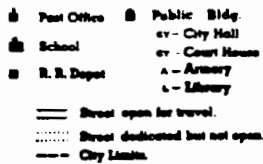
APR 10 1984

WATER RESOURCES DEPT.
SALEM, OREGON

SIGNED ROUTES



LEGEND



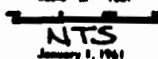
LAFAYETTE

YAMHILL COUNTY, OREGON

PREPARED BY THE
 OREGON STATE HIGHWAY DEPARTMENT
 TRAFFIC ENGINEERING DIVISION
 IN COOPERATION WITH THE
 U.S. DEPARTMENT OF COMMERCE
 BUREAU OF PUBLIC ROADS

Population 563

Scale in feet



RECEIVED

JUN 20 1984

WATER RESOURCES DEPT.
SALEM, OREGON

PLACE OF USE
WATER PERMIT APPL.

655-110-83

T. 4 S., R. 3 W., W. M.

Application No. *2-11258*
Permit No. G10400

S.W. Cor.
F. Fletcher
D.L.C.

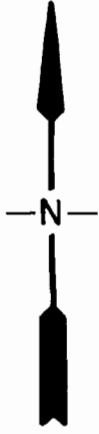
N.W. Cor.
R.P. Smith
D.L.C.

SEE

14.26 ch DEED

N.E. Cor.
D. Smith
D.L.C.

1600
S. 35° 27' 52" E. 2275'



1" = 400'

SEE MAP 4 4 24

WELL

#7

RECEIVED

APR 10 1984

WATER RESOURCES DEPT.
SALEM, OREGON

8.4

E. N 57° 57' 20" E
4319 - 2400

18.58 ch

192.29'

1800

1900

LAFAYETTE
WATER PERMIT

#655-W10-SS

RECEIVED

JUN 20 1984

WATER RESOURCES DEPT.
SALEM, OREGON