

RECEIVED

JUL 20 1994
WATER RESOURCES DEPT.
SALEM, OREGON

Wells

a. No. 101
b. G.P.M. 55
c. EL. 1095.8
d. E.D. N/A

a. No. 102
b. G.P.M. 75
c. EL. 1090.9
d. E.D. 16

a. No. 7
b. G.P.M. 15
c. EL. 1101.6
d. E.D. 25.6
(DOMESTIC USE)

a. No. B
b. G.P.M. 50
c. EL. 1119.9
d. E.D. 4.4

a. No. D
b. G.P.M. 28
c. EL. 1082.8
d. E.D. 45

DOMESTIC
a. No. C ✓
b. G.P.M. 40
c. EL. 1102
d. E.D. 26
(DOMESTIC USE)

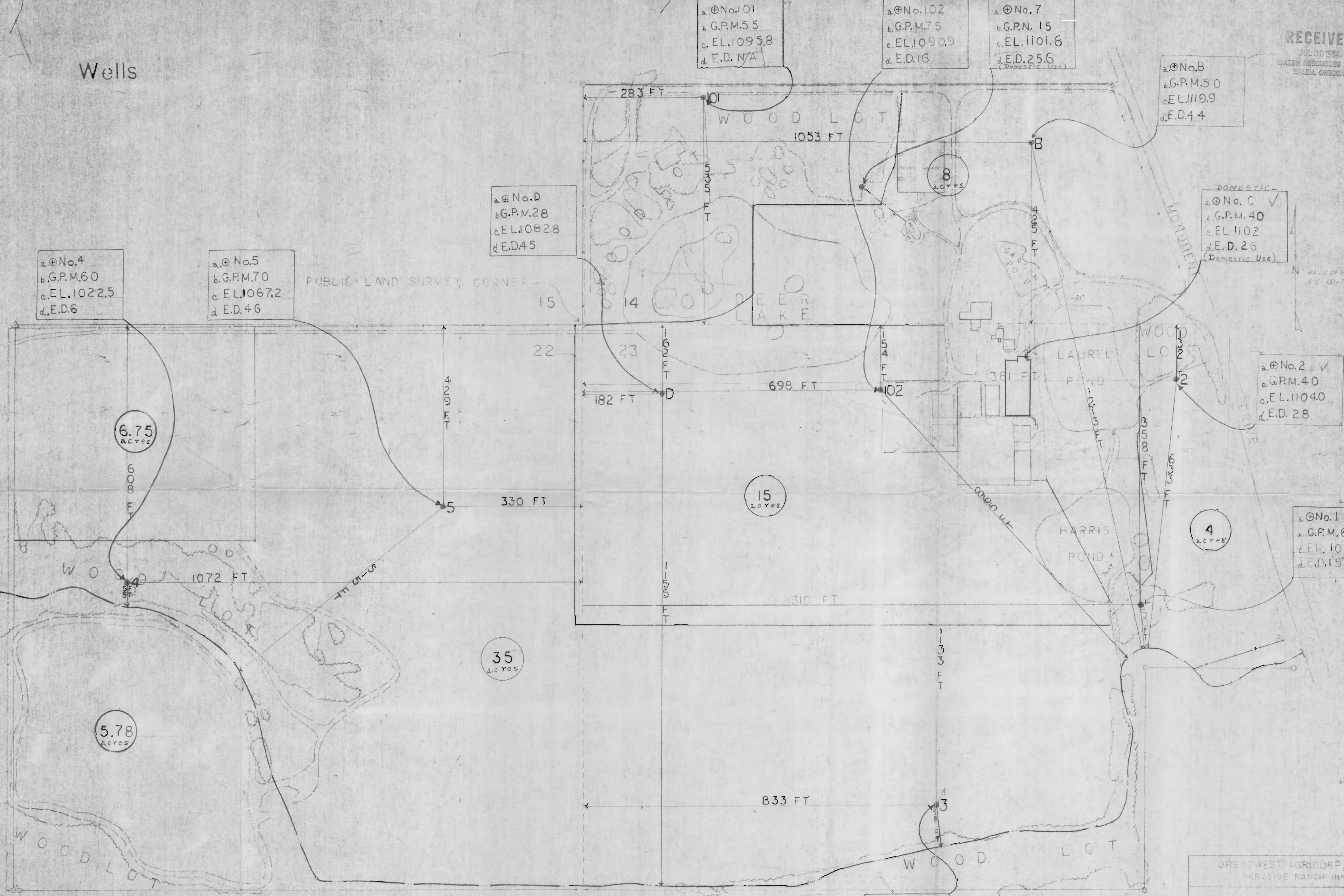
a. No. 4
b. G.P.M. 60
c. EL. 1022.5
d. E.D. 6

a. No. 5
b. G.P.M. 70
c. EL. 1067.2
d. E.D. 46

PUBLIC LAND SURVEY CORNER

a. No. 2 ✓
b. G.P.M. 40
c. EL. 1104.0
d. E.D. 28

a. No. 1 ✓
b. G.P.M. 60
c. EL. 1089.9
d. E.D. 15



LEGEND

- △ MAPPING CONTROL
- PROPERTY CORNER
- ⊕ TRAVERSE CORNER
- ⊙ WELL

WELL BLOCK INFORMATION

- a. WELL NUMBER (No.)
- b. GALLON PER MINUTE (GPM)
- c. SURFACE ELEVATION (EL)
- d. GROUND AND STREAM BED ELEVATION DIFFERENCE (E.D.) IN FEET

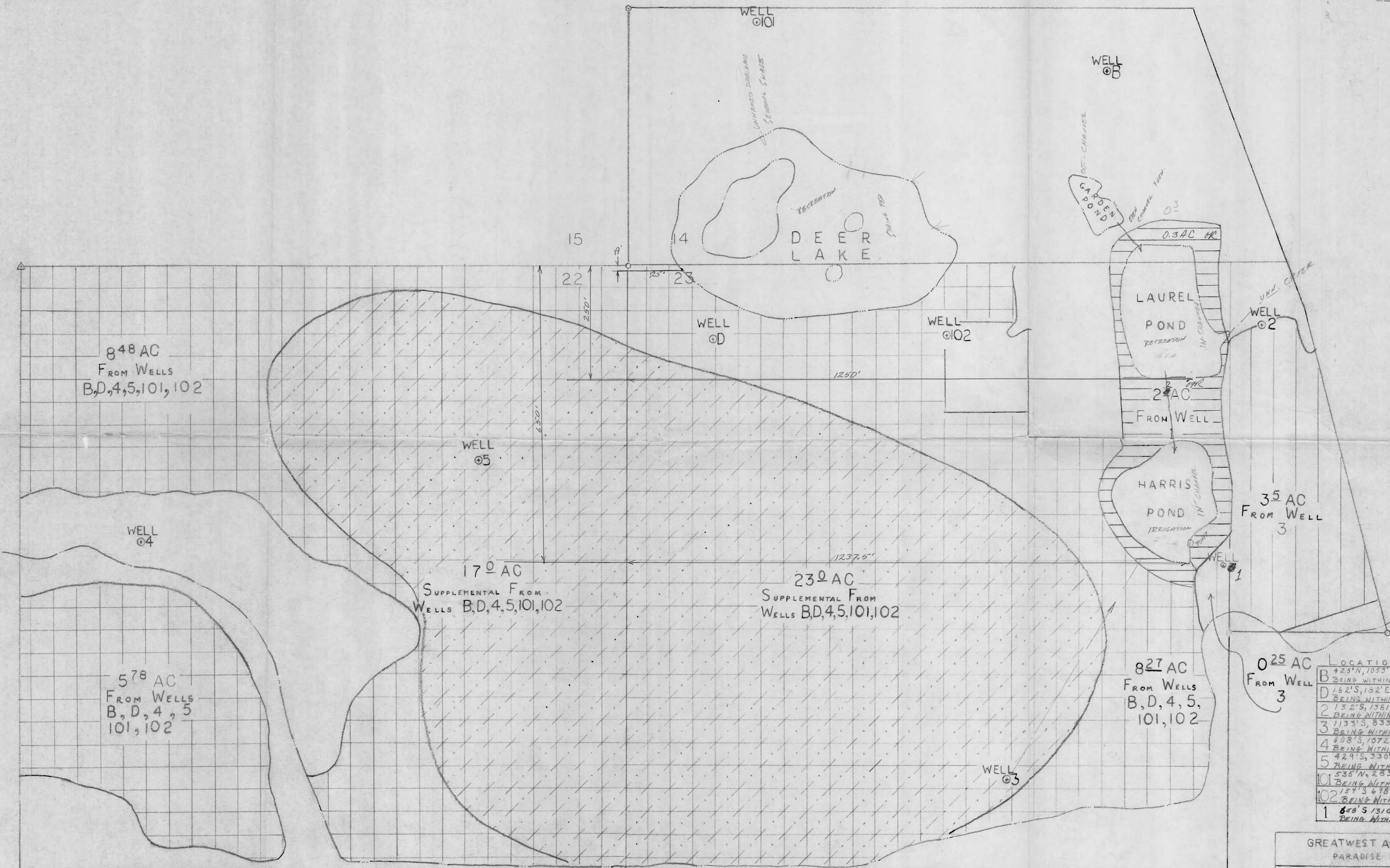
a. No. 3
b. G.P.M. 45
c. EL. 1063.2
d. E.D. 7

Application No. G-11059, R-68126, & 68127
Permit No. G10003 R 0900 4857

GREAT WEST AGRICORP, INC.
PARADISE RANCH INN

SCALE: 1" = 100'

EXHIBIT eeb 99



LOCATION OF WELLS

B	425' N, 1053' E FROM SW COR. S-14 BEING WITHIN SW 1/4 SW 1/4 SEC 14
D	162' S, 152' E FROM NW COR S-23 BEING WITHIN NW 1/4 NW 1/4 SEC 23
2	132' S, 1381' E FROM NW COR S-23 BEING WITHIN NW 1/4 NW 1/4 SEC 23
3	1133' S, 833' E FROM NW COR S-23 BEING WITHIN NW 1/4 NW 1/4 SEC 23
4	408' S, 1072' W FROM NE COR S-22 BEING WITHIN NE 1/4 NE 1/4 SEC 22
5	429' S, 330' W FROM NE COR S-22 BEING WITHIN NE 1/4 NE 1/4 SEC 22
101	535' N, 283' E FROM SW COR S-14 BEING WITHIN SW 1/4 SW 1/4 SEC 14
102	154' S 678' E FROM NW COR S-23 BEING WITHIN NW 1/4 NW 1/4 SEC 23
1	808' S 1310' E FROM NW COR S-23 BEING WITHIN NW 1/4 NW 1/4 SEC 23

P O N D S

DEER LAKE FROM WELL "B"
 GARDEN, LAUREL, AND HARRIS PONDS FROM WELL "2"

- PRIMARY FROM WELLS #B,D,4,5,101,102
- SUPPLEMENTAL FROM WELLS #B,D,4,5,101,102
- PRIMARY FROM WELL #3

Application No. G-11059, R-68126, & 68127
 Permit No. G10403 R 9900 48575

GREATWEST AGRICORP, INC
 PARADISE RANCH INN
 SCALE: 1" = 100'
 TWP 35S JOSEPHINE COUNTY
 OREGON