

CHECKED BY GH.
 SCALE 1"=200'
 DWG. NO. 055-016-A1-01

CHASE PROPERTY
 WATER RIGHTS

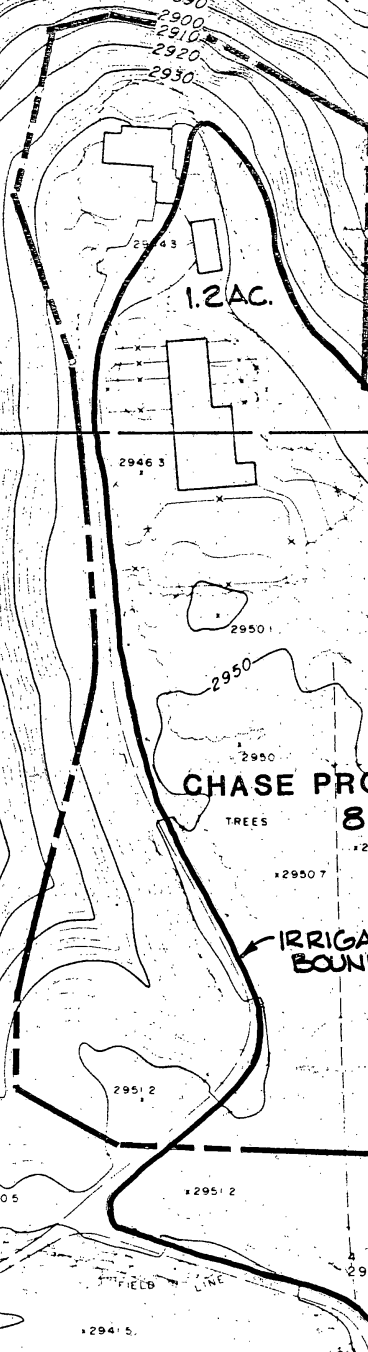
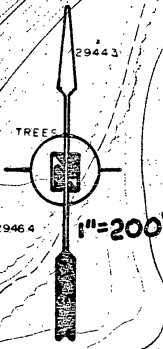
APPROVED
 DATE 12/30/83

W/S EL. 2842±

Application No. *D-11229*
 Permit No. G10406

WELL
 EL. 2851±

DESCHUTES RIVER



CHASE PROPERTY
 8.1 AC.

14 13
 23 24
 T155 R12E
 W.M.

NW 1/4 - SE 1/4
 SE 1/6 COR.
 SW 1/4 - SE 1/4
 SE 1/4 - SE 1/4

RECEIVED

FEB 11 1984
 WATER RESOURCES DEPT.
 SALEM, OREGON

