

RECEIVED

SEP 25 1984

WATER RESOURCES DEPT
SALEM, OREGON

L. S. RANCH

Scale 8" = 1 mile

T 17 S R 21 E

Section 12

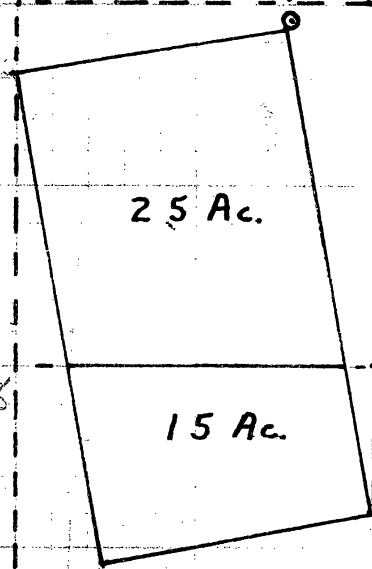
2 | 1
11 | 12

40.30



40.15

well



25 Ac.

15 Ac.

40.08

40.15

The well is located
1390 ft. south and
2350 ft. east of
the NW corner
of Section 12.

Irrigated Acres -
25 Acres in the
SE 1/4 of the NW 1/4
of Sec. 12.

15 Acres in the
NE 1/4 of the SW 1/4
of Sec. 12.

Application 9-11300
Permit No. G10430

39.89