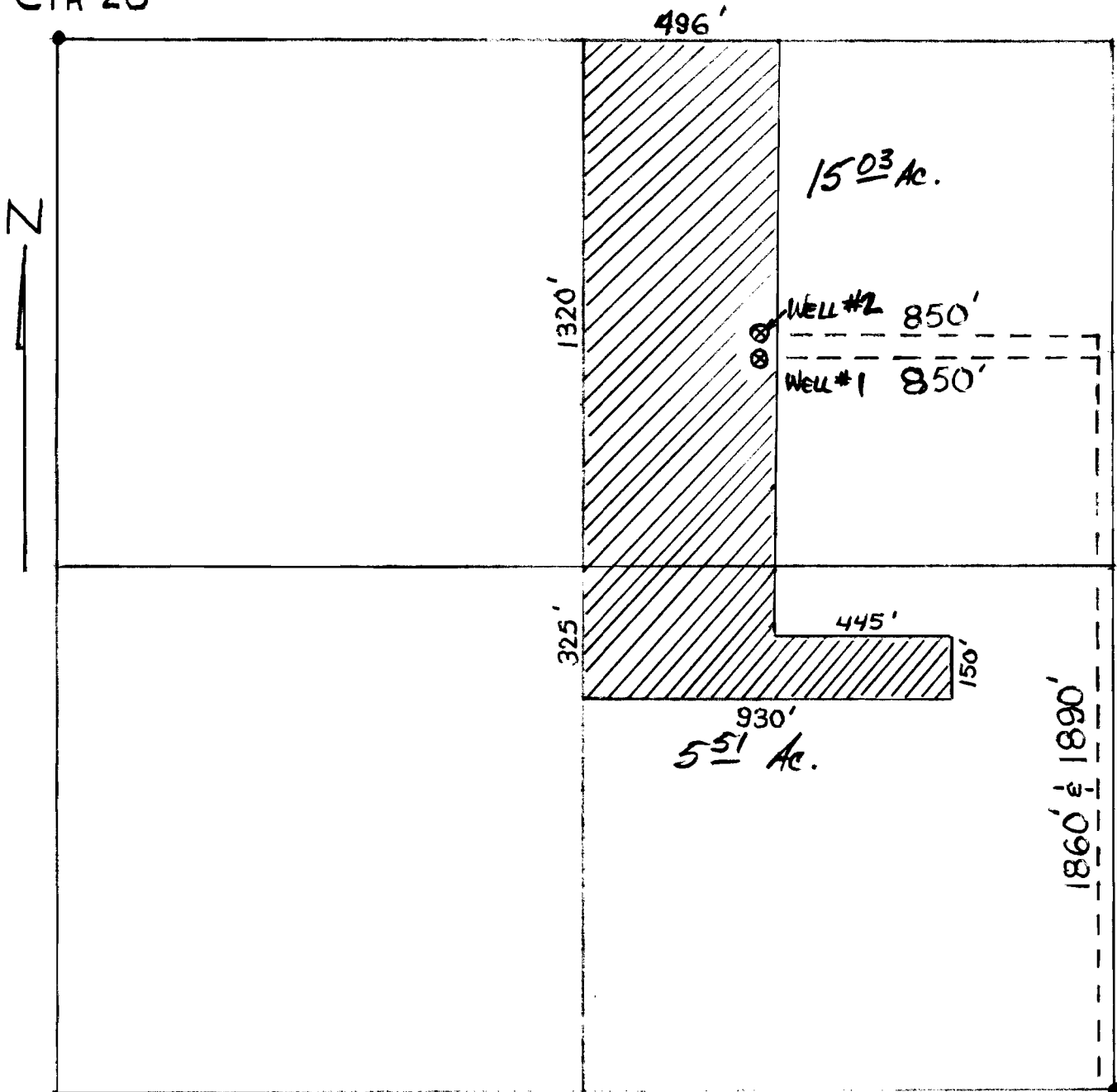


Application No. 2-11249  
 Permit No. **G10441**

**RECEIVED**  
 MAR 23 1984  
 WATER RESOURCES DEPT.  
 SALEM, OREGON

CTR 28



UMAPINE HWY.

28 S.E. CORNER

- 1" = 400'
- ⊗ = LOCATION OF WELLS
- ▨ = AREA IRRIGATED

20.54 ACRES