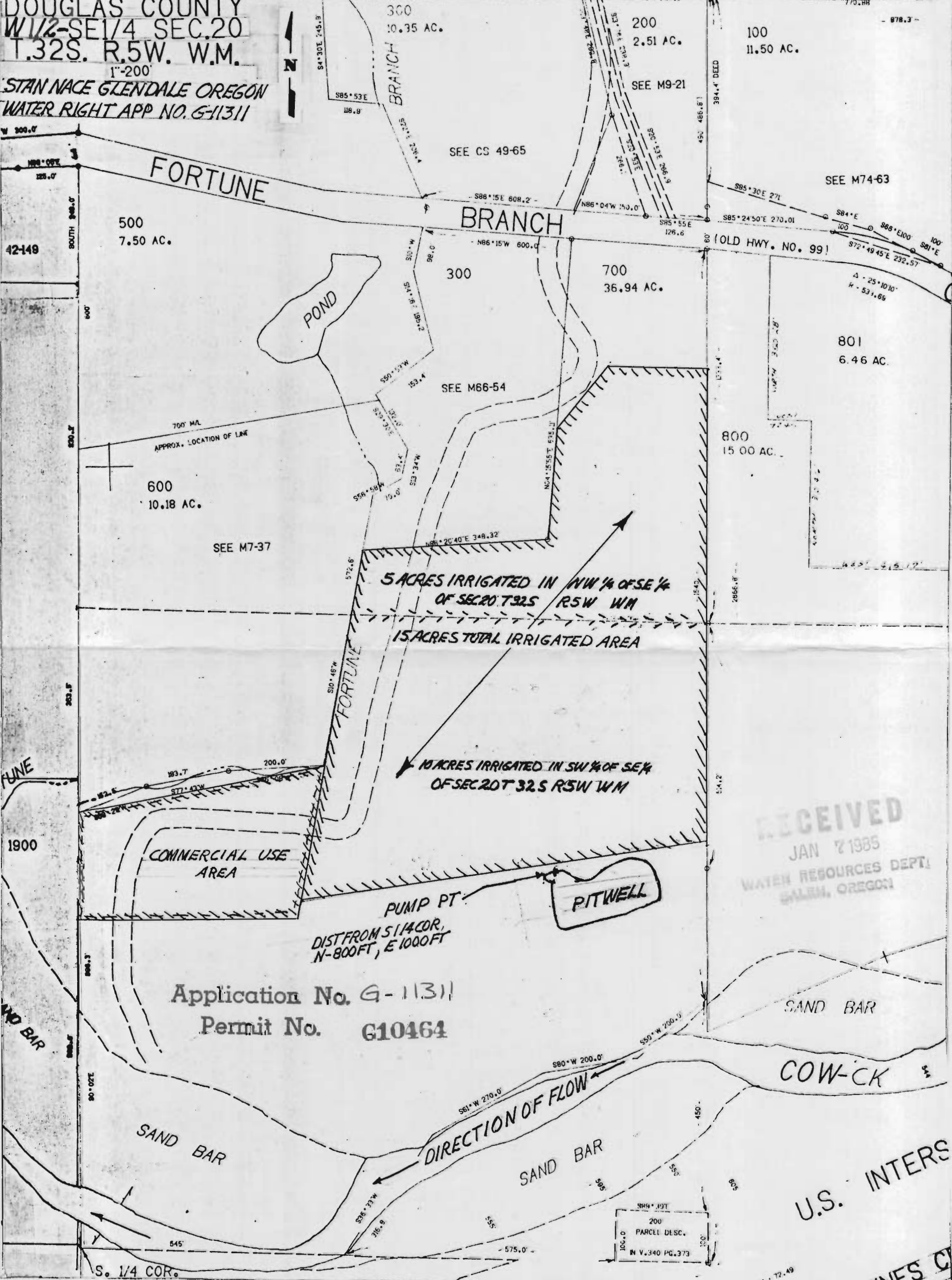


DOUGLAS COUNTY
W 1/2-SE 1/4 SEC. 20
T. 32S. R. 5W. W.M.

1"-200'
STAN NACE GLENDALE OREGON
WATER RIGHT APP NO. G-11311



42-149

500
7.50 AC.

300
10.35 AC.

200
2.51 AC.

100
11.50 AC.

SEE CS 49-65

SEE M9-21

SEE M74-63

FORTUNE
BRANCH

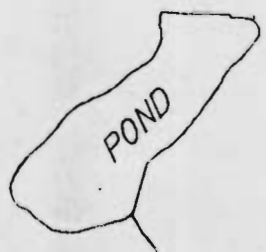
BRANCH

(OLD HWY. NO. 99)

300

700
36.94 AC.

801
6.46 AC.



SEE M66-54

800
15.00 AC.

600
10.18 AC.

SEE M7-37

5 ACRES IRRIGATED IN NW 1/4 OF SE 1/4
OF SEC 20 T 32 S R 5 W W M
15 ACRES TOTAL IRRIGATED AREA

10 ACRES IRRIGATED IN SW 1/4 OF SE 1/4
OF SEC 20 T 32 S R 5 W W M

COMMERCIAL USE
AREA

PUMP PT.
DIST FROM S 1/4 COR,
N-800 FT, E 1000 FT



RECEIVED
JAN 7 1985
WATER RESOURCES DEPT.
SALEM, OREGON

Application No. G-11311
Permit No. G10464

SAND BAR

COW-CK

DIRECTION OF FLOW

SAND BAR

SAND BAR

U.S. INTERS

200
PARCEL DESC.
IN V. 340 PG. 373

S. 1/4 COR.