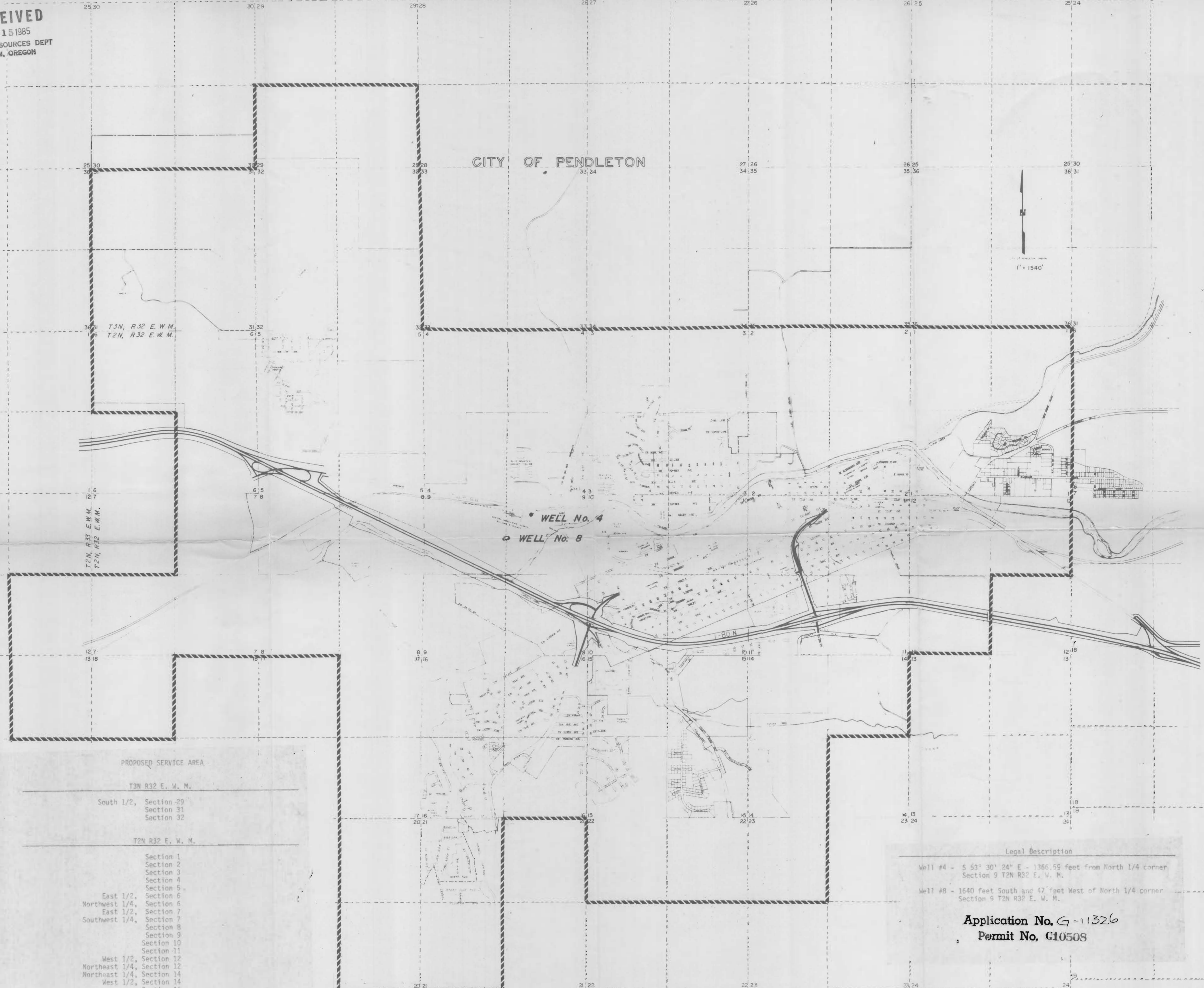


RECEIVED
 MAR 15 1985
 WATER RESOURCES DEPT
 SALEM, OREGON

CITY OF PENDLETON



PROPOSED SERVICE AREA

T3N R32 E. W. M.

- South 1/2, Section 29
- Section 31
- Section 32

T2N R32 E. W. M.

- Section 1
- Section 2
- Section 3
- Section 4
- Section 5
- East 1/2, Section 6
- Northwest 1/4, Section 6
- East 1/2, Section 7
- Southwest 1/4, Section 7
- Section 8
- Section 9
- Section 10
- Section 11
- West 1/2, Section 12
- Northwest 1/4, Section 12
- Northwest 1/4, Section 14
- West 1/2, Section 14
- Section 15
- Section 16
- East 1/2, Section 17
- Northwest 1/4, Section 18
- East 1/2, Section 20
- West 1/2, Section 21
- North 1/2, Section 22
- Northwest 1/4, Section 23

T2N R33 E. W. M.

- Southeast 1/4, Section 12
- Northwest 1/4, Section 13

Legal Description

- Well #4 - S 53° 30' 24" E - 1366.59 feet from North 1/4 corner Section 9 T2N R32 E. W. M.
- Well #8 - 1640 feet South and 47 feet West of North 1/4 corner Section 9 T2N R32 E. W. M.

Application No. G-11326
 Permit No. G10508