

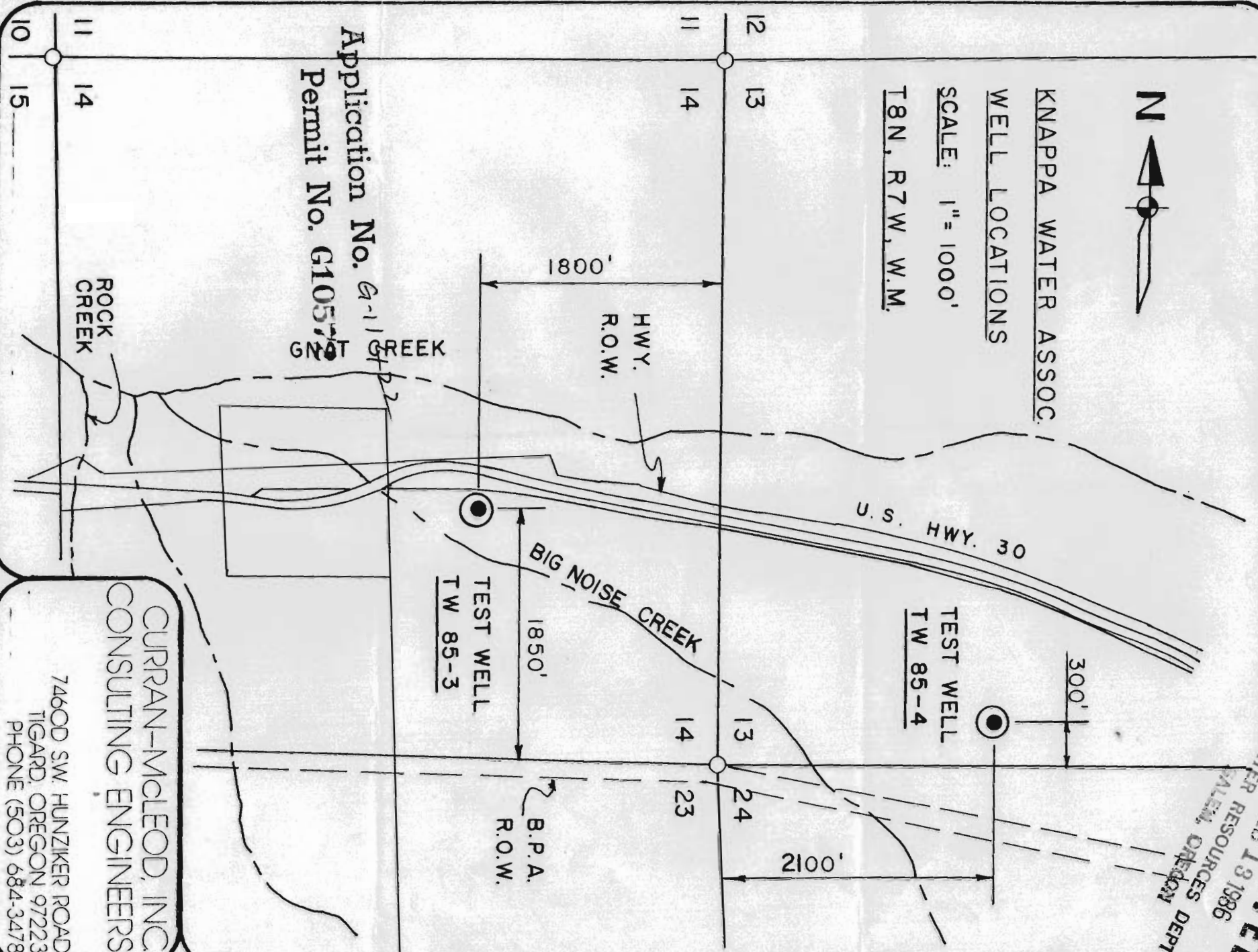


KNAPPA WATER ASSOC.

WELL LOCATIONS

SCALE: 1" = 1000'

T8N, R7W, W.M.



Application No. G-111
Permit No. G10573

CURRAN-MCLEOD, INC.
CONSULTING ENGINEERS

7460D SW HUNZIKER ROAD
TIGARD, OREGON 97223
PHONE (503) 684-3478

RECEIVED
FEB 13 1986
WATER RESOURCES DEPT
PALENT OFFICE

RECEIVED
FEB 04 1986
WATER RESOURCES DEP
SALEM, OREGON

CLATSOP COUNTY
T.8N. R.7W. W.M.

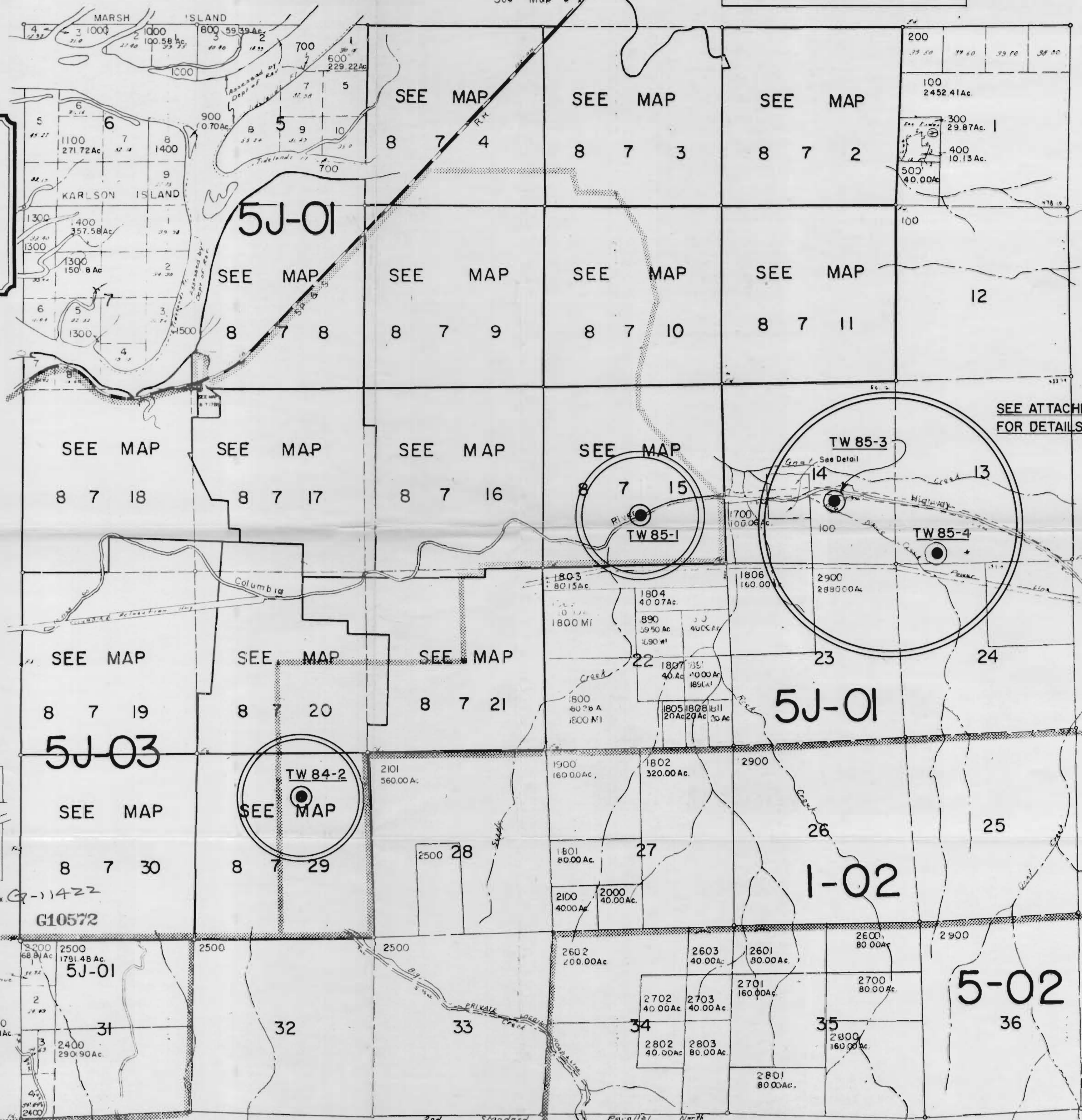
1" = 2000'

See Map 9 7

KNAPPA WATER ASSOC.
WELL LOCATION

8 7
INDEX

PROPERTY
OF THE
CLATSOP COUNTY
ASSESSORS OFFICE



1	218.8
2	218.8
3	218.8
4	218.8
5	218.8
6	218.8
7	218.8
8	218.8
9	218.8
10	218.8
11	218.8
12	218.8

CANCELLED NO.
T.L. 12
1200



SEE ATTACHED SHEETS
FOR DETAILS IN CIRCLES

6
MOD 8
See

DETAIL 8 7 14
1" = 800'
1600
15.42 Ac.
HWY
1701
14.74 Ac.

Application No. G-11422
Permit No. G10572

8 7
INDEX

CLATSOP COUNTY
Section 29 T.8N. R.7W. W.M.

1" = 400'

PROPERTY
OF THE
CLATSOP COUNTY
ASSESSORS OFFICE

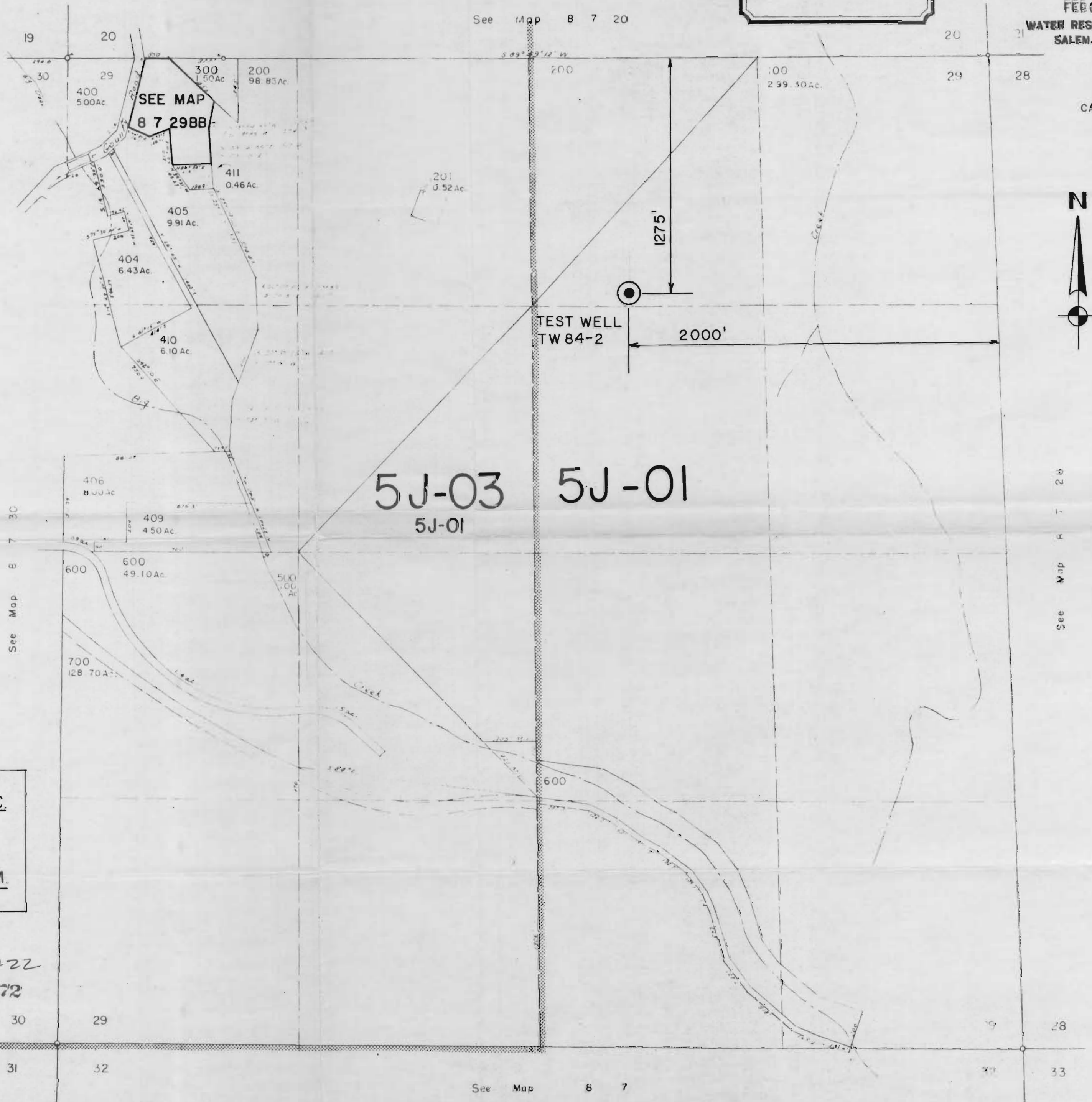
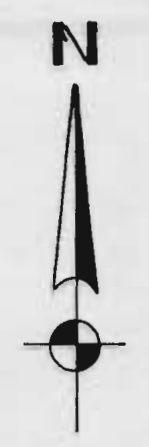
8 7 29

RECEIVED

FEB 04 1986
WATER RESOURCES DEPT
SALEM, OREGON

CANCELLED

401
402
403



KNAPPA WATER ASSOC.
WELL LOCATION
T8N, R7W, SEC 29, W.M.

Application No. G-11422
Permit No. G10572

See Map 8 7 20
See Map 8 7 30
See Map 8 7
See Map 8 7