

Application No. **9-11482**
Permit No. **G10597**

RECEIVED

MAR 21 1986

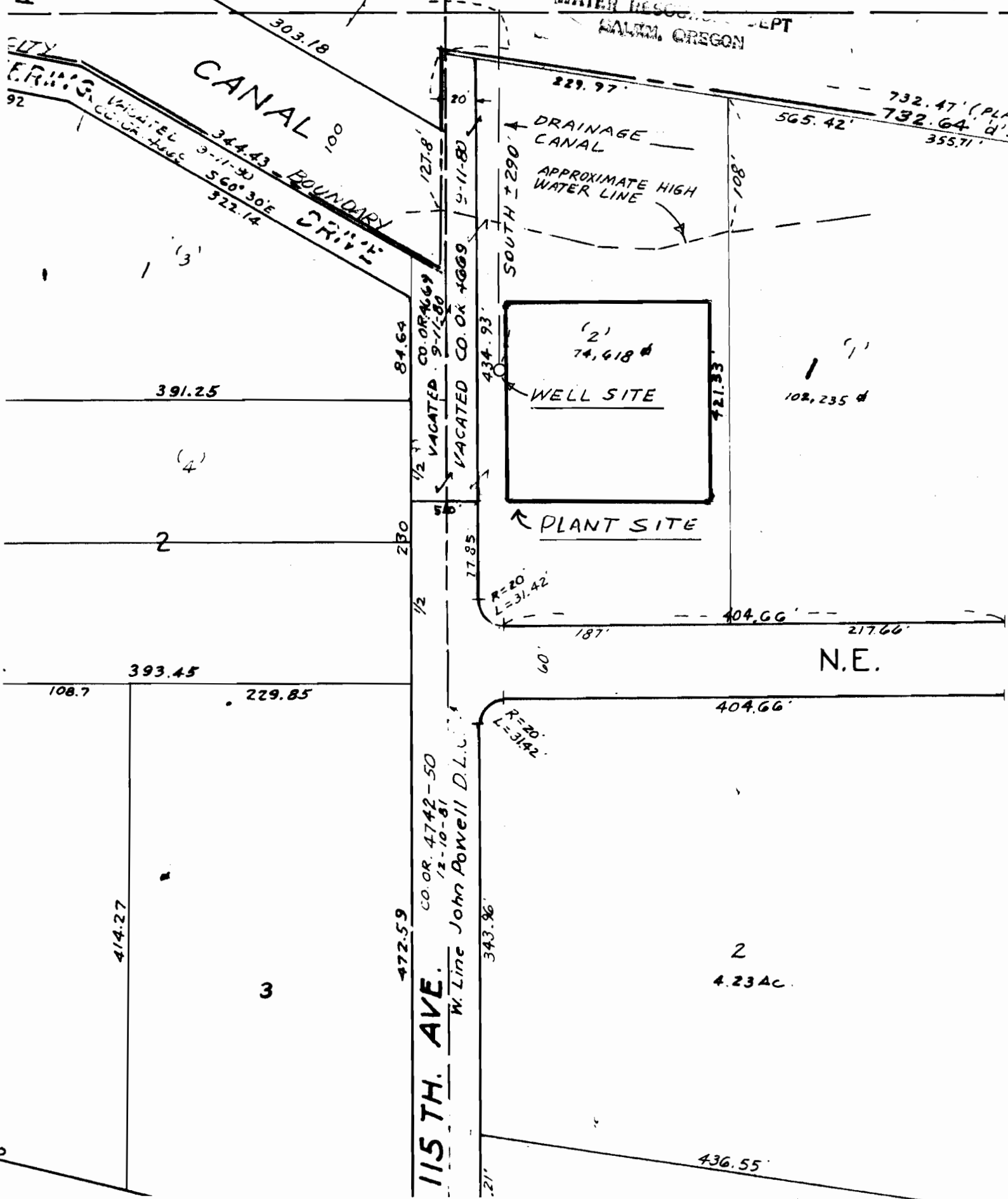
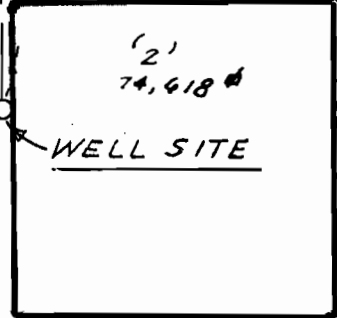
WATER RESOURCES DEPT
SALM, OREGON

15
IN-2E

BOUNDARY DRIVE
303.18
314.43
3-11-80
560°30'E
322.14

CANAL

DRAINAGE CANAL
APPROXIMATE HIGH WATER LINE



391.25

2

393.45

414.27

229.85

3

472.59

115 TH. AVE.

CO. OR. 4742-50
12-10-81
W. Line John Powell D.L.C.

343.96

R=20
L=31.42

R=20
L=31.42

PLANT SITE

74.618'

421.33'

102,235 #

N.E.

404.66'

2

4.23 Ac.

436.55'

187'

217.66'

404.66'

21'

17.85'

434.93'

SOUTH ± 290'

20'

127.8'

229.97'

565.42'

732.47' (PL)
732.64' (D)
355.71'

92

CITY

ERMS

92

NE

9