

NW1/4 SEC 24 T36S R6 W W.M

JOSEPHINE COUNTY

1" = 200' ±



SCALE
1" = 200' ±

SEE MAP 36 6 23A

1/4 COR
LEONARD RD

RECEIVED

JAN 14 1987

WATER RESOURCES DEPT.
SALEM, OREGON

Application No. G-11593
Permit No. G10698

WELL LOCATIONS:

ALL LOCATIONS ARE REFERENCED TO THE N 1/4 CORNER OF SEC. 24.

- #1 - 1379.51 FT SOUTH & 290.40 FT WEST
- #2 - 1457.02 FT SOUTH & 134.34 FT WEST
- #3 - 1270.00 FT SOUTH & 1315.00 FT WEST
- #4 - 1990.00 FT SOUTH & 575.00 FT WEST

LEGEND:

- MOBILE HOME
- COMMUNITY SERVICE AREA
- WATER LINE

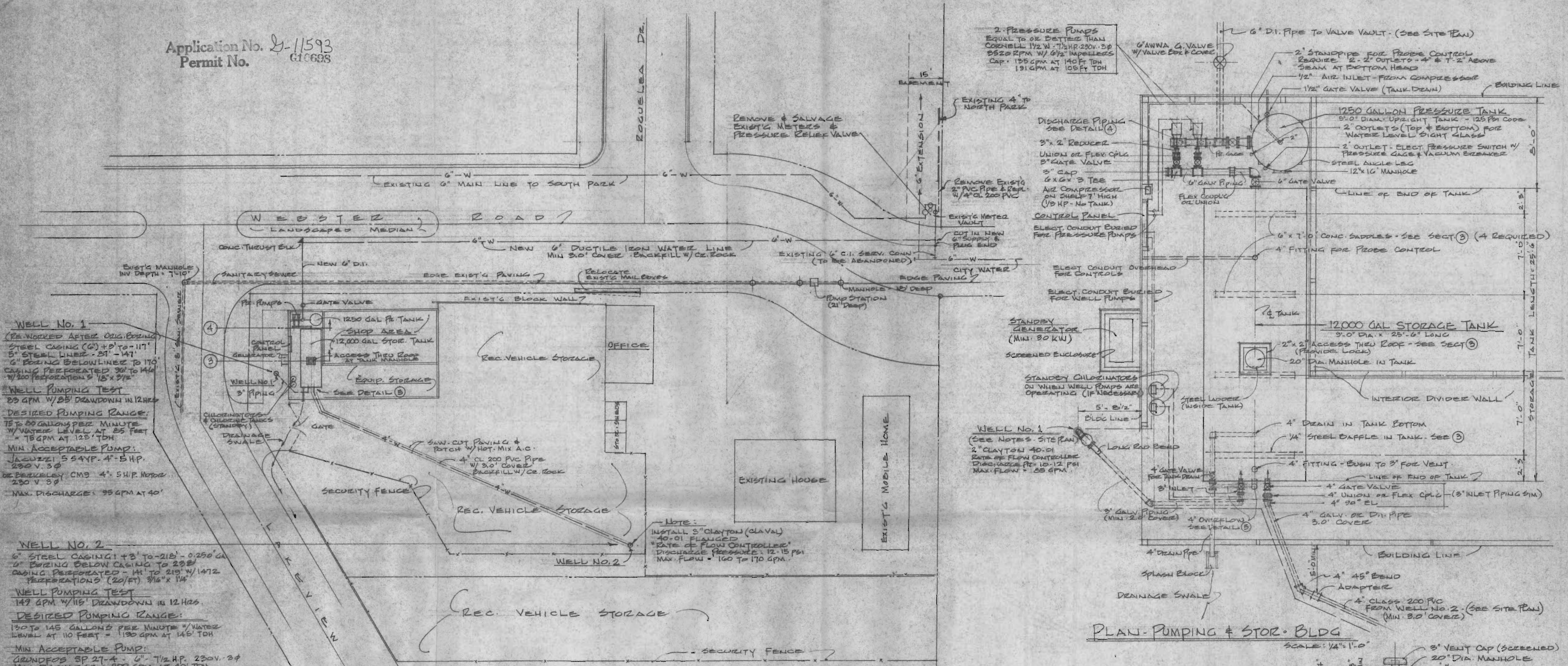
EXHIBIT "W-W"

ROBERT S. BLANTON, P.E.
CONSULTING ENGINEERING
130 W NINTH ST MEDFORD, OREGON

ROGUE LEA ESTATES
WATER DISTRIBUTION PLAN

OWNER: BILL SMALL GRANTS PASS, OREGON

Application No. 2-11593
Permit No. G16698



WELL NO. 1
 (RE-DRILLED AFTER ORIG. CORING)
 STEEL CASING (6") x 8' TO -117'
 5" STEEL LINER - 21' - 147'
 6" PILING BELOW LINE TO 170'
 CASING PERFORATED 30' TO 144'
 W/ 200 PERFORATIONS 1/8" x 3/16"

WELL PUMPING TEST
 83 GPM W/ 85' DRAWDOWN IN 12 HRS

DESIRED PUMPING RANGE:
 15 TO 80 GALLONS PER MINUTE
 W/ WATER LEVEL AT 85 FEET
 = 75 GPM AT 125' TDH

MIN. ACCEPTABLE PUMP:
 JACUZZI 5.54 HP 4" - 5 HP
 230 V 3Ø
 OR BERKELEY CMS 4" 5 HP MOTOR
 230 V 3Ø

MAX. DISCHARGE: 95 GPM AT 40'

WELL NO. 2
 6" STEEL CASING (4" x 3' TO -218' - 0.250" GA)
 6" PILING BELOW CASING TO 238'
 CASING PERFORATED - 141' TO 219' W/ 1472
 PERFORATIONS (20/FT) 3/16" x 1/4"

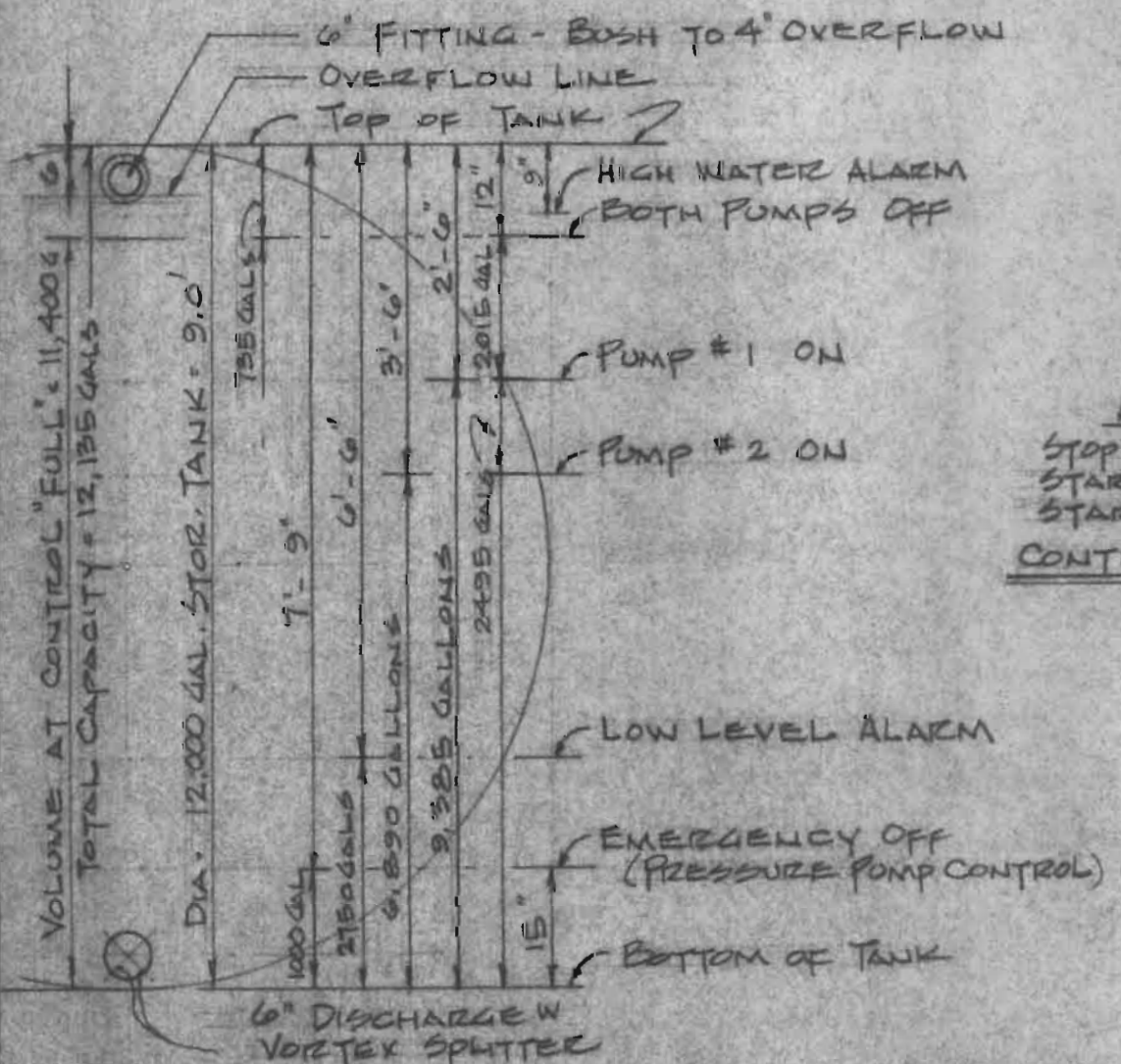
WELL PUMPING TEST
 149 GPM W/ 115' DRAWDOWN IN 12 HRS

DESIRED PUMPING RANGE:
 130 TO 145 GALLONS PER MINUTE * WATER
 LEVEL AT 110 FEET = 130 GPM AT 145' TDH

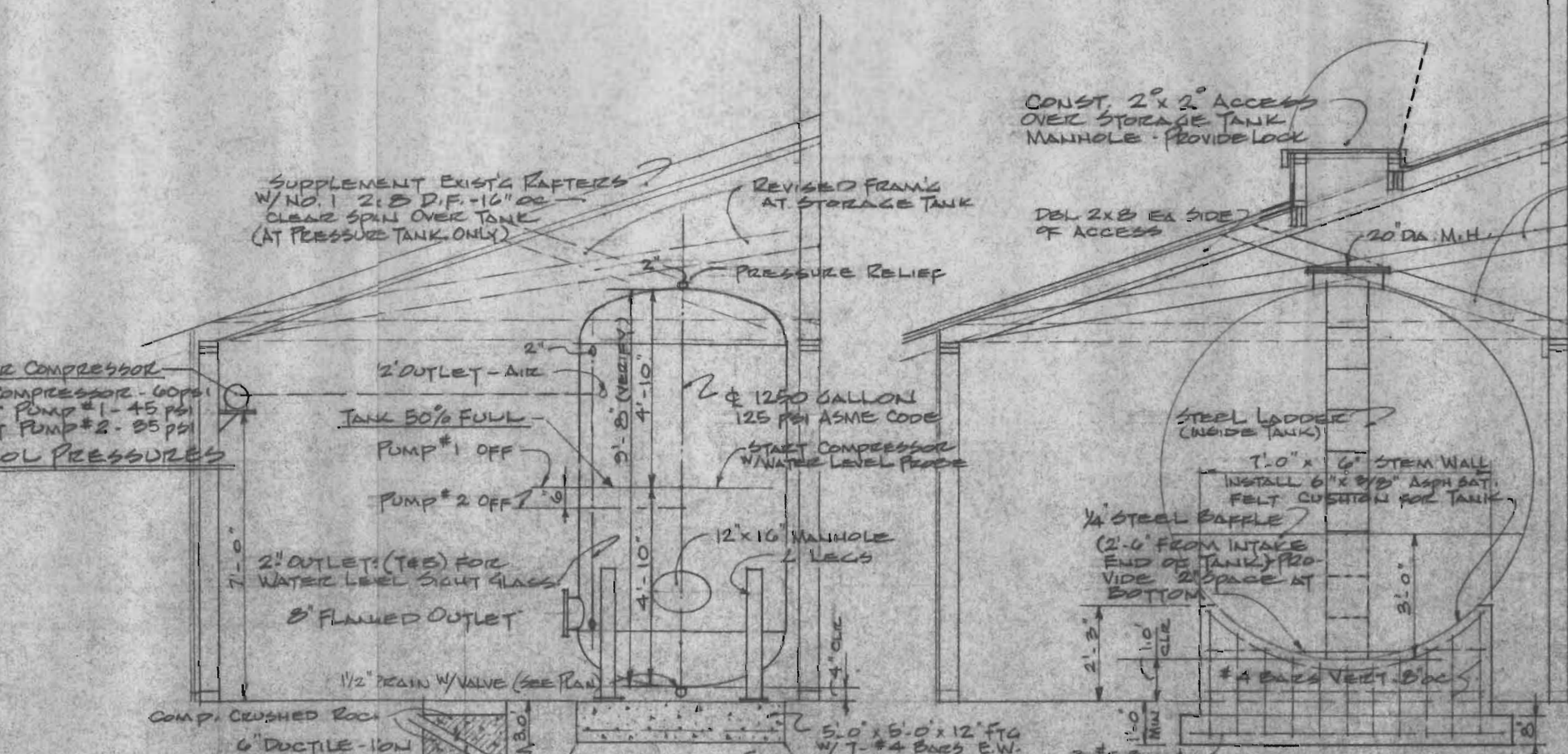
MIN. ACCEPTABLE PUMP:
 GRUNDFOS SP 21-A 6" 1/2 HP 230V 3Ø
 MAX DISCHARGE: 200 GPM AT 40' TDH

2-PRESSURE PUMPS
 EQUAL TO OR BETTER THAN
 CORNELL 1/2 W - 1/2 HP 230V 3Ø
 8520 RPM W/ 6 1/2" IMPELLERS
 CAP: 195 GPM AT 140 FT TDH
 131 GPM AT 105 FT TDH

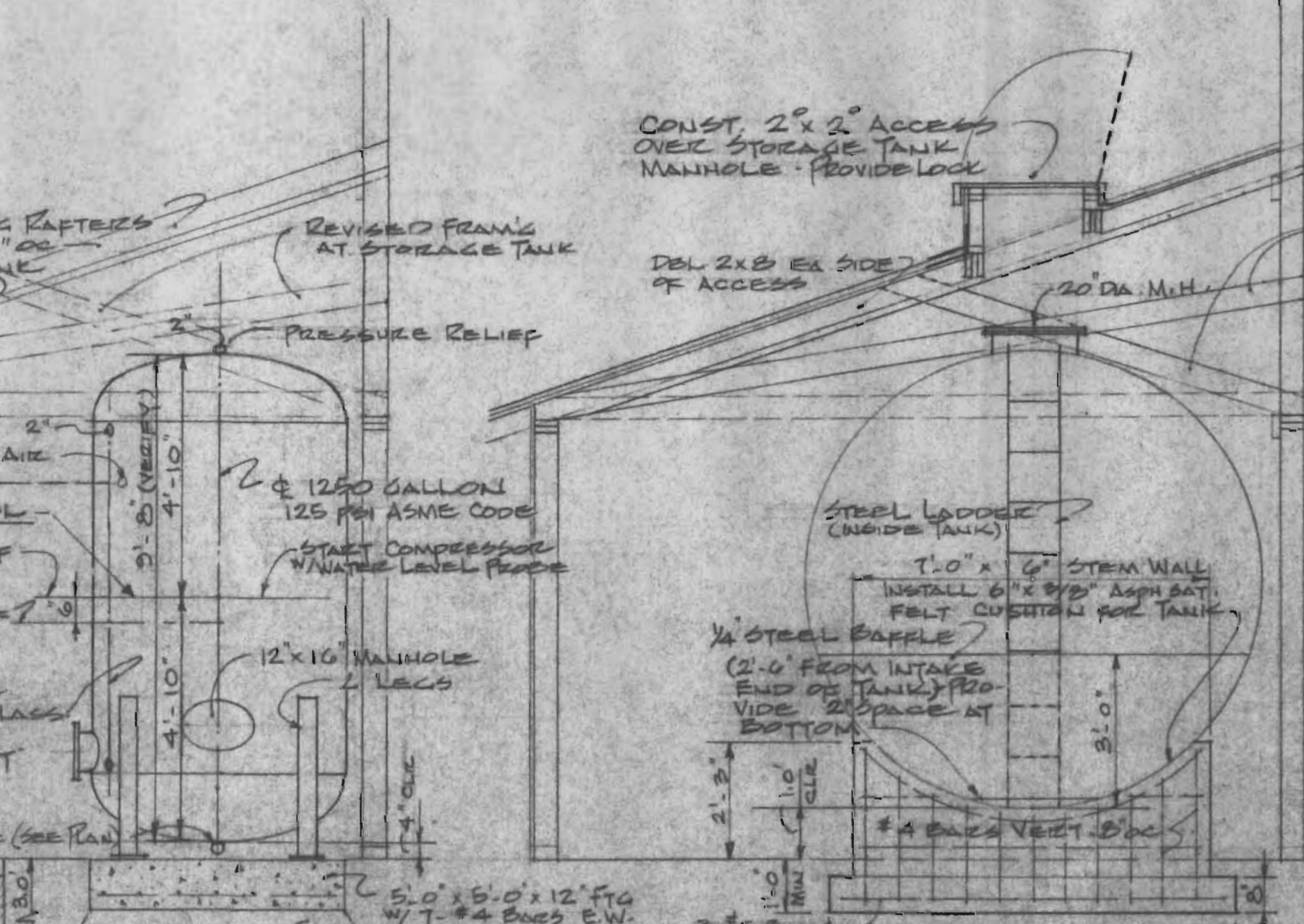
PLAN - PUMPING & STOR. BLDG
 SCALE: 1/4" = 1'-0"



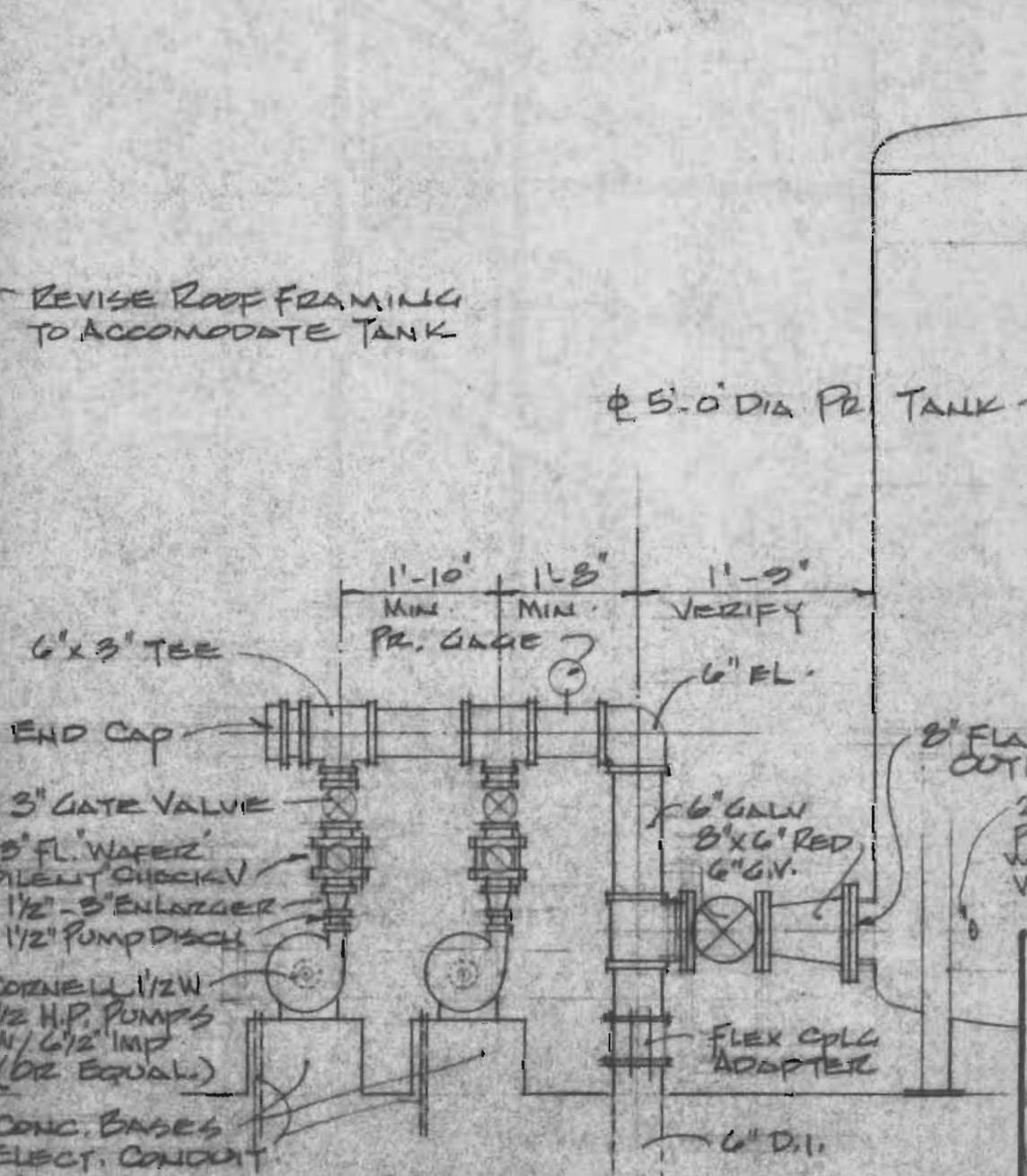
1) DETAIL - STOR. TANK CONTROL LEVELS
 SCALE: 1/2" = 1'-0"



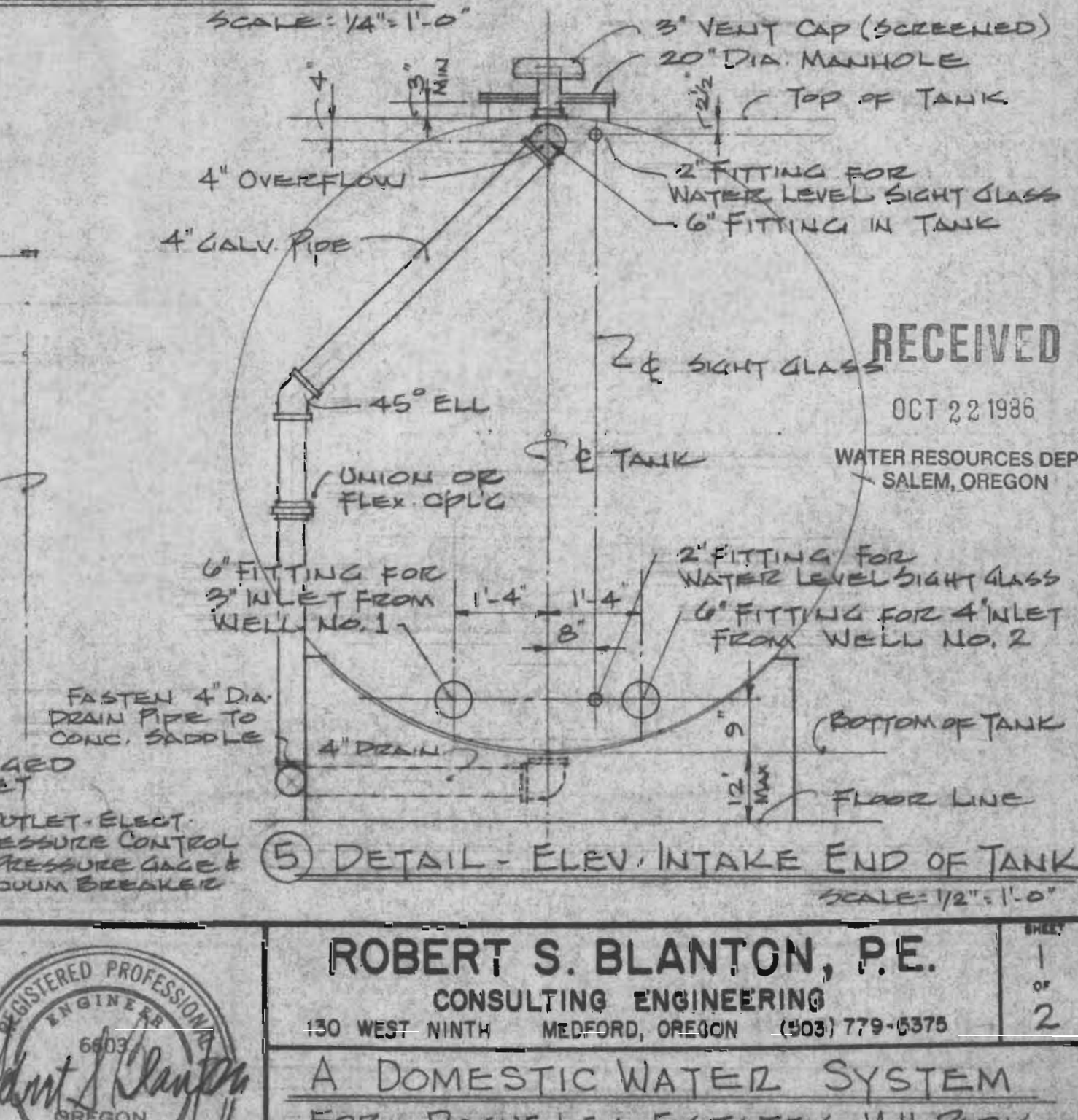
2) ELEV. PRESSURE TANK
 SCALE: 3/8" = 1'-0"



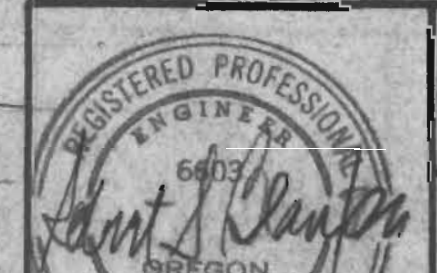
3) SECTION - STORAGE TANK
 SCALE: 3/8" = 1'-0"



4) DETAIL - PR. PUMP DISCHARGE PIPING
 SCALE: 1/2" = 1'-0"



5) DETAIL - ELEV. INTAKE END OF TANK
 SCALE: 1/2" = 1'-0"



ROBERT S. BLANTON, P.E.
 CONSULTING ENGINEERING
 130 WEST NINTH MEDFORD, OREGON (503) 779-6376

A DOMESTIC WATER SYSTEM
 FOR ROGUELEA ESTATES M.H. PARK

DESIGNED BY: RSB
 DATE: 12-88
 NORTH & SOUTH PAGES: SEE 1/4" NW 1/4 S24 T36 S R4M, NW
 FORE BUILT: SMALL 416 COARIE LANE
 GEANTS PASS, OREGON

RECEIVED
 OCT 22 1988
 WATER RESOURCES DEPT
 SALEM, OREGON