

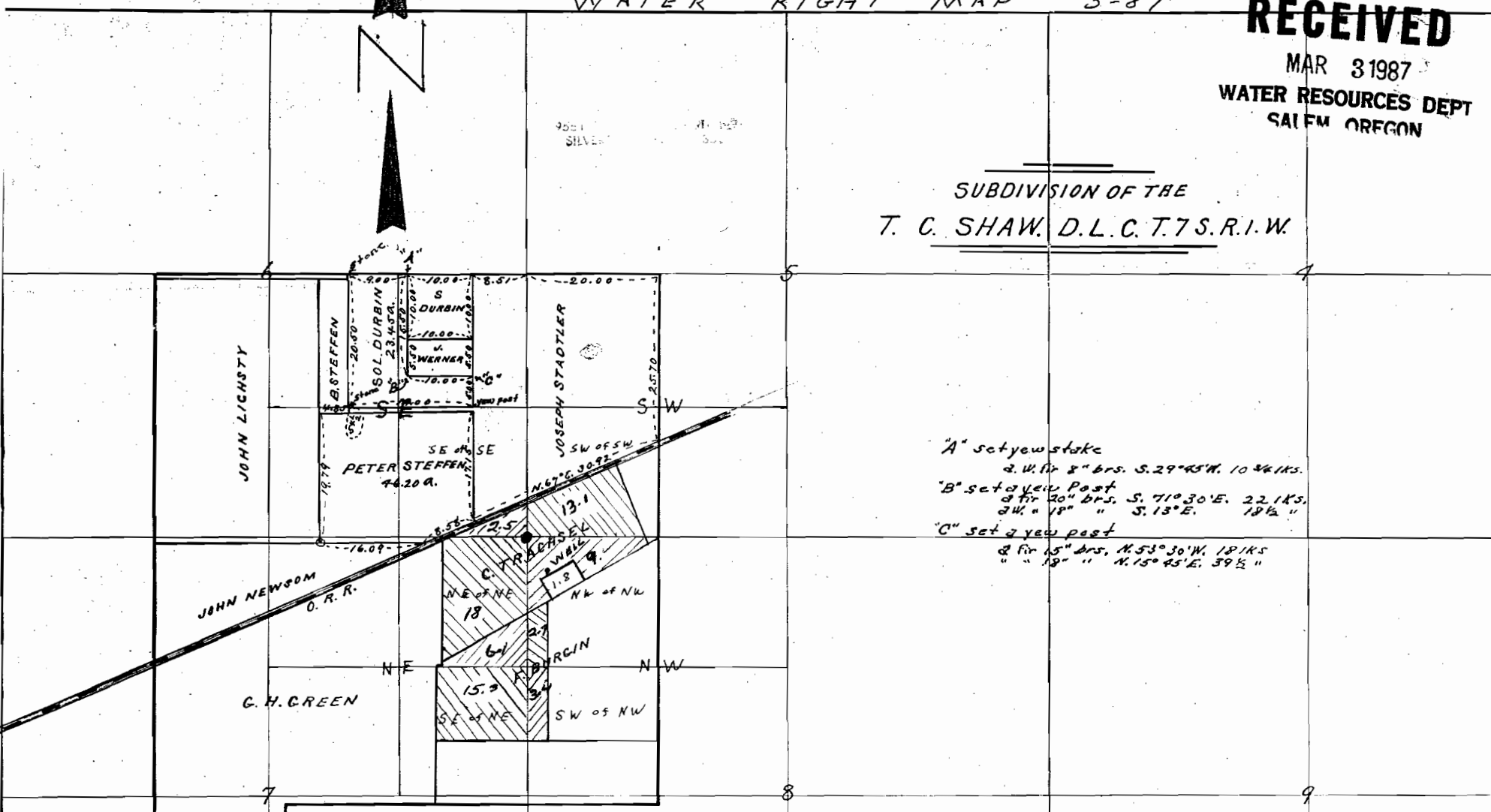
Applied for D-11629
 Permit No. G10722

WATER RIGHT MAP 3-87

RECEIVED

MAR 3 1987
 WATER RESOURCES DEPT
 SALEM OREGON

SUBDIVISION OF THE
T. C. SHAW, D.L.C. T.7S.R.1.W.



"A" set a new stake
 2. W. of 8" brs. S. 29° 45' W. 10 3/4 IKS.
 "B" set a new post
 2. W. of 20" brs. S. 71° 30' E. 22.1 Ks.
 2. W. of 18" " S. 13° E. 18 1/2 "
 "C" set a new post
 2. W. of 15" brs. N. 53° 30' W. 18 IKS
 " " 18" " N. 15° 45' E. 39 1/2 "

1320
 1" = 50 FT.
 80 CH.
 1 MILE
 4"

Well located 350' S - 200' E from the N.W. corner of section 8