

YAMHILL COUNTY

LIPPINCOTTS  
2ND.

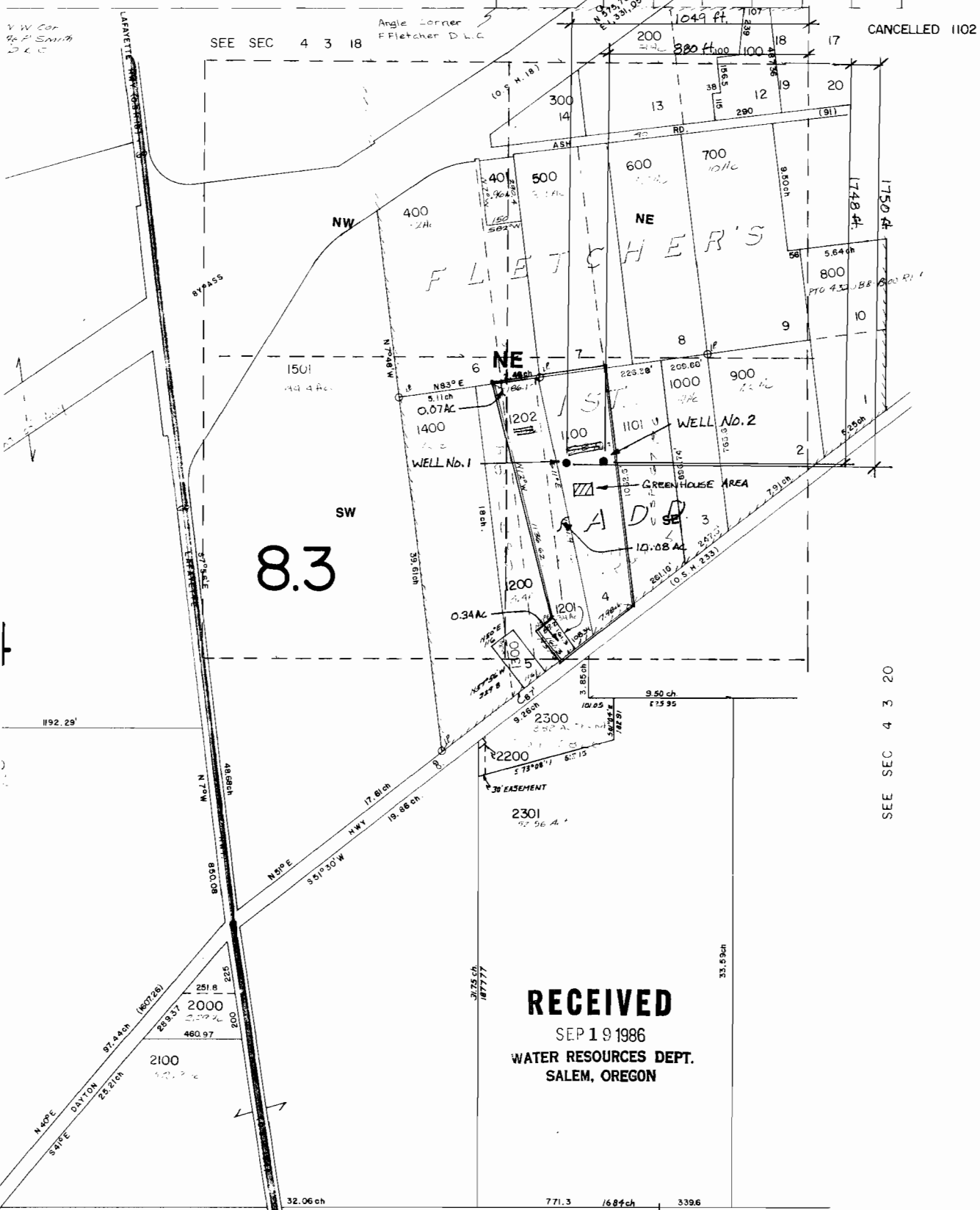
1" = 400'

V.W. Cor  
P.F. Smith  
D.C.

SEE SEC 4 3 18

Angle Corner  
F Fletcher D.C.

CANCELLED 1102



8.3

SEE SEC 4 3 20

**RECEIVED**  
SEP 19 1986  
WATER RESOURCES DEPT.  
SALEM, OREGON

V.W. Cor  
Holdings  
D.C.

19 | 20  
30 | 29