

LINCOLNWOOD NO. 2

SECTIONS 25 & 36, T7S, R2W

CAUTION
THIS MAP IS
FURNISHED BY
FOR INFORMATION
COUNTY FOR RECORDS
EXPENSES CONTAINED
IN ACCOUNTS WHICH IN
MAP USERS OF THIS
CHECK ANY DETAILS FOR
ING THEREON.

MARION COUNTY

1976

RECEIVED

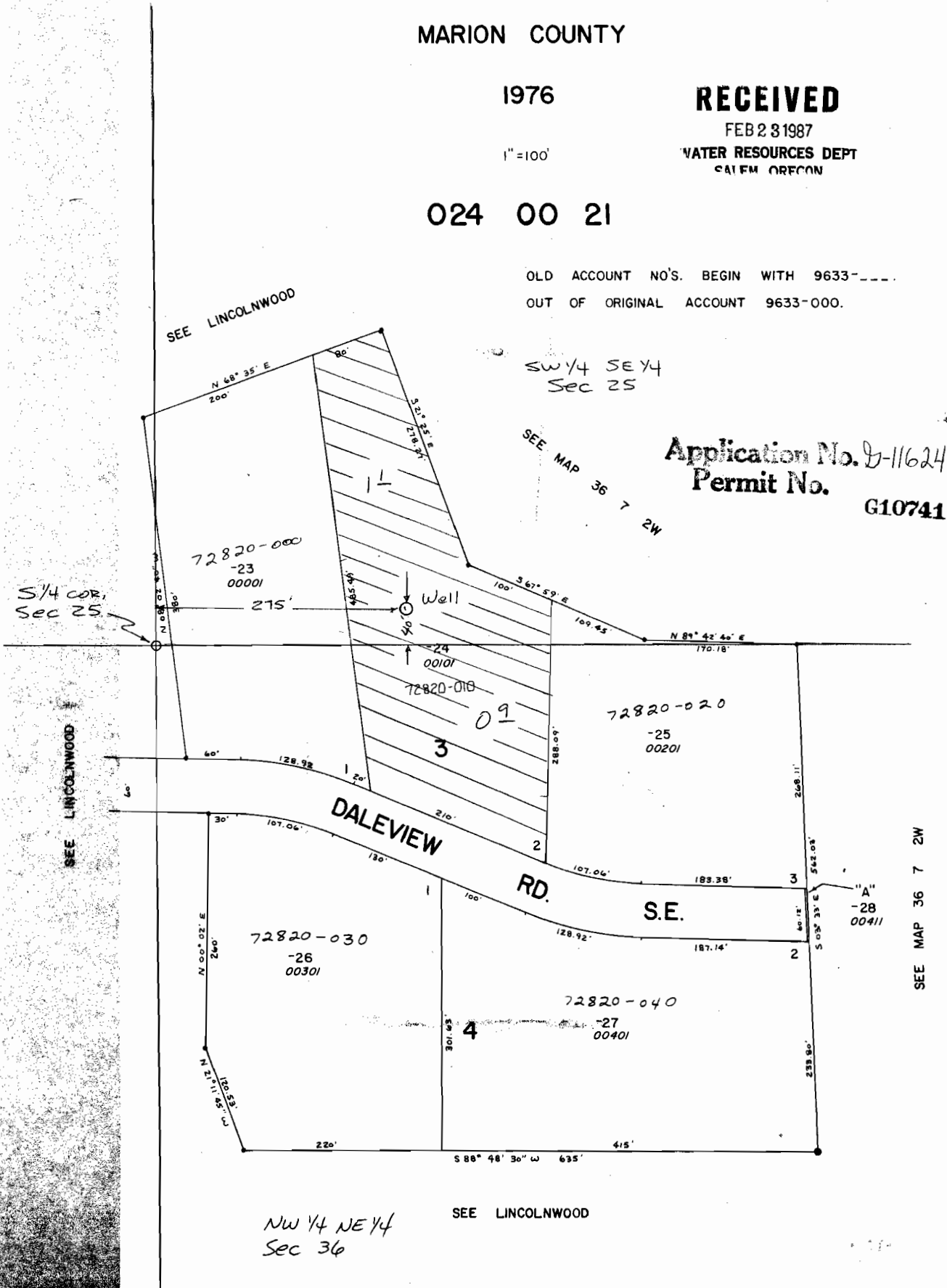
FEB 23 1987

1"=100'

WATER RESOURCES DEPT
SALEM OREGON

024 00 21

OLD ACCOUNT NO'S. BEGIN WITH 9633-
OUT OF ORIGINAL ACCOUNT 9633-000.



Application No. D-11624
Permit No. G10741

SW 1/4 SE 1/4
Sec 25

SEE MAP 36 7 2W

SEE MAP 36 7 2W

NW 1/4 NE 1/4
Sec 36

SEE LINCOLNWOOD